

sedge sprite

Nehalennia irene

FEATURES

The sedge sprite is about one inch long; mostly dark, metallic-green, with a pale yellow-green thorax. They have a thin, pale stripe behind the eyes on the head and a blue spot on the end of the tail. Females are like males, but their thorax is more yellow, and the end of the tail is greener. The sphagnum sprite (*Nehalennia gracilis*) is very similar and very subtle differences in the color of the abdomen separate them.

BEHAVIORS

The sedge sprite is widespread and locally abundant in marshes and weedy ponds. Adults are often seen perching on plants close to water or flying low in the air, zig-zagging between plants. They fly from May to August in all but southern 3rd of Illinois. They are not listed as a such but may be a vulnerable species in Illinois due to habitat degradation and loss.

TAXONOMY

Kingdom: Animalia
Phylum: Arthropoda
Class: Insecta
Order: Odonata
Family: Coenagrionidae

ILLINOIS STATUS

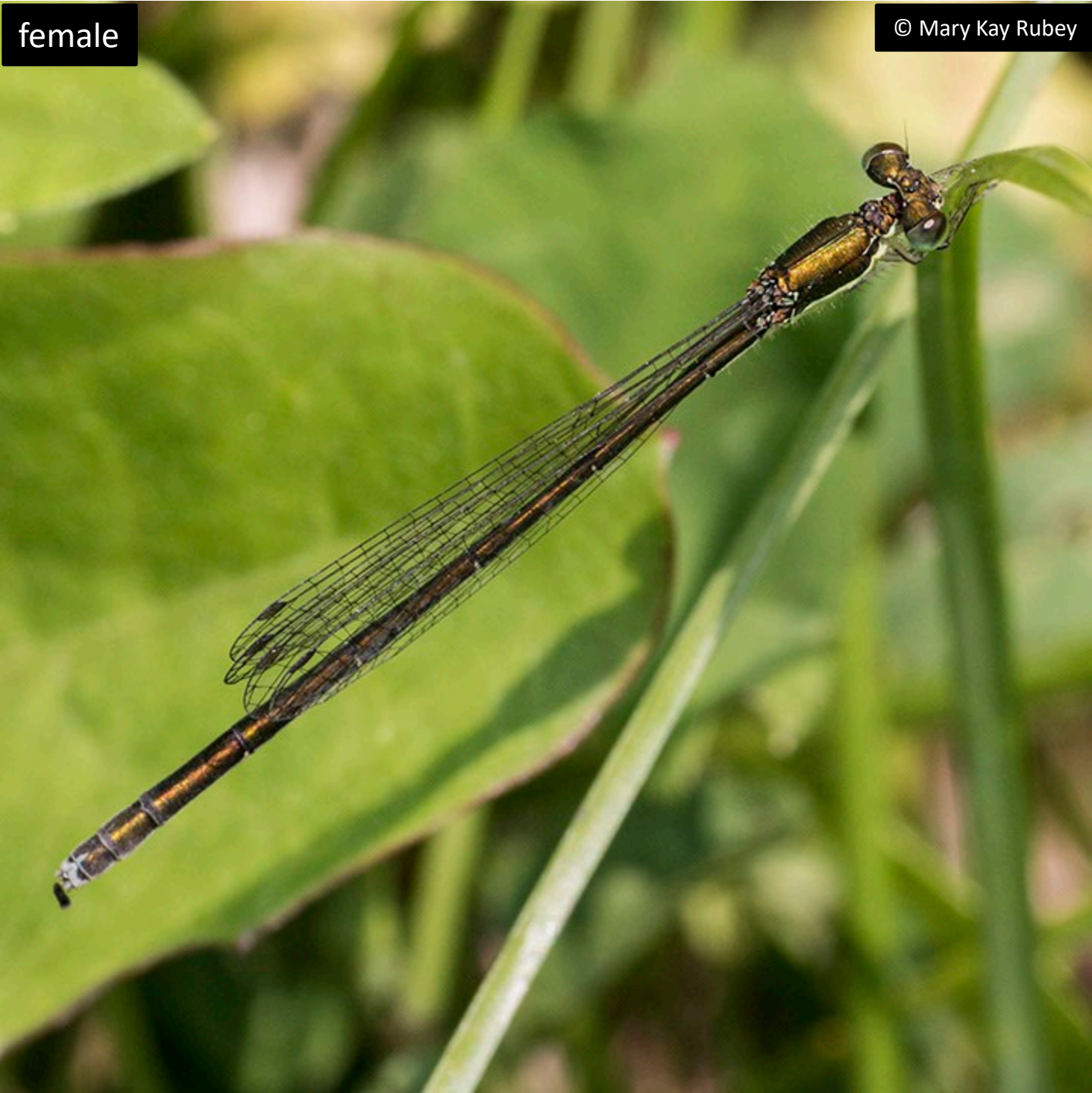
common, native

ILLINOIS RANGE



female

© Mary Kay Rubey



© Mary Kay Rubey



male

Aquatic Habitats

lakes, ponds and reservoirs; marshes; rivers and streams; swamps

Woodland Habitats

none

Prairie and Edge Habitats

none