

# skimming bluet

## *Enallagma geminatum*

### FEATURES

The skimming bluet is a small (about one inch long), black and blue damselfly. They have brown eyes with a distinct blue streak, small spots behind the eyes, and long black legs. Males have mostly black abdomens with waxy, blue lines at the base. Females have lighter eyes, and stouter, abdomens that are cream colored underneath. Most bluets look very similar, but the skimming bluet is distinguished by the blue streak of color in their eye and the tip of the abdomen is completely black. The turquoise bluet (*Enallagma divagans*) is similar, but smaller; occurs on ponds rather than streams; and is set apart by a pair of connected, blue spots on the top of the head behind the eyes.

### BEHAVIORS

The skimming bluet lives near lakes, ponds, and slow-moving streams with lots of aquatic vegetation. They fly statewide from May to September. Males fly near the surface of the water, “skimming” it. Mating happens in shrubs away from the water and females deposit eggs in floating aquatic vegetation.

### TAXONOMY

Kingdom: Animalia  
Phylum: Arthropoda  
Class: Insecta  
Order: Odonata  
Family: Coenagrionidae

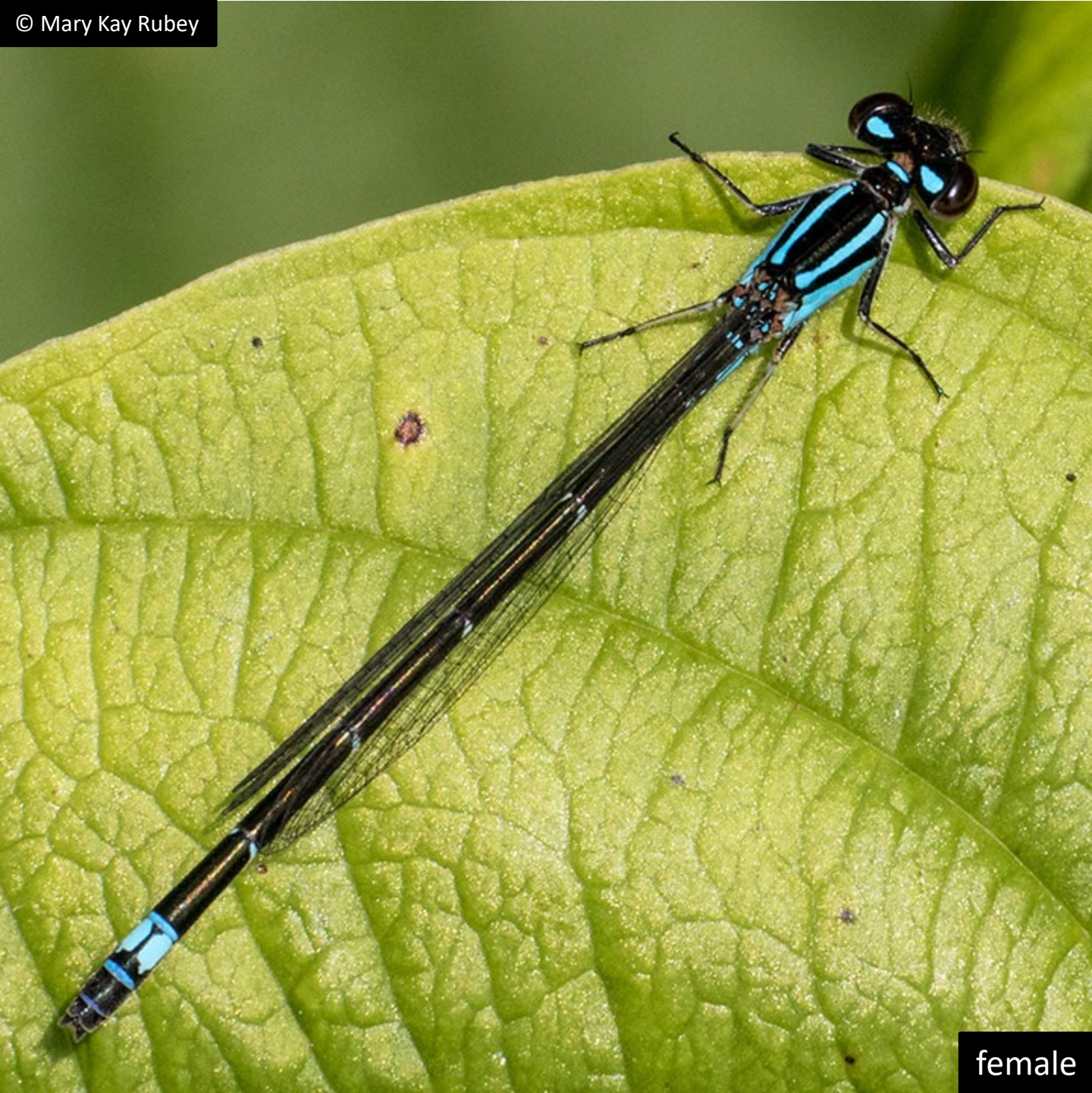
### ILLINOIS STATUS

common, native

### ILLINOIS RANGE



© Mary Kay Rubey



female

© Mary Kay Rubey



male

## **Aquatic Habitats**

lakes, ponds and reservoirs; rivers and streams

## **Woodland Habitats**

none

## **Prairie and Edge Habitats**

none