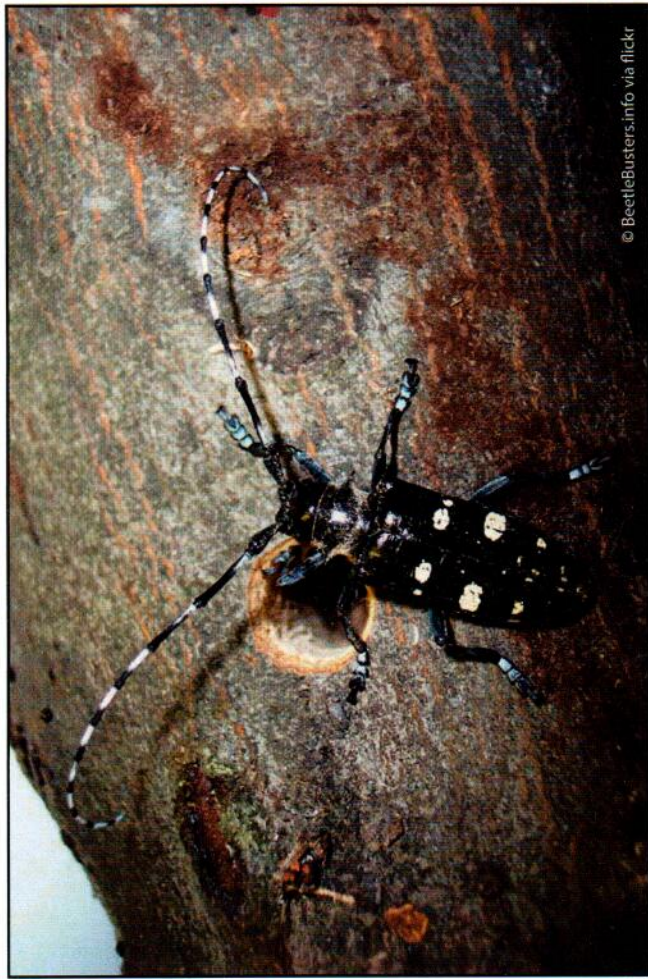
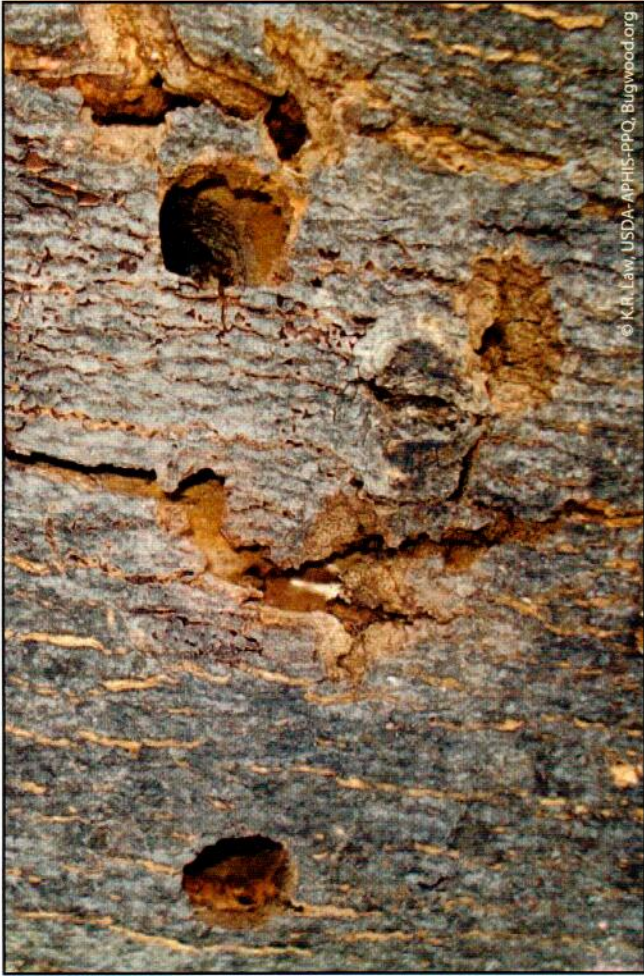


Asian Longhorned Beetle, *Anoplophora glabripennis*



Signs and symptoms of Asian longhorned beetle (ALB). Clockwise from top left: adult ALB and exit hole. Severely infested tree. Perfect round exit holes. Pencil inserted far into trunk checks depth of gallery (because larvae tunnel deep into the wood). Egg sites and exit hole.



© K.R. Law, USDA-APHIS-PPQ, Bugwood.org



© D. Haugen, APHIS, Bugwood.org



© D. Owen, CDFFR, Bugwood.org



© K.R. Law, APHIS-PPQ, Bugwood.org



© Beetlebusters in the Field



© K.R. Law, APHIS-PPQ, Bugwood.org



© K.R. Law, APHIS-PPQ, Bugwood.org



© PDC/NR, Bugwood.org

Clockwise from top left: oviposition sites look different over time and on different species. Exit holes and bark cracks at old oviposition sites. Oozing sap and oviposition staining at egg sites. Frass. Crown dieback on infested tree. For more information visit www.firstdetector.org