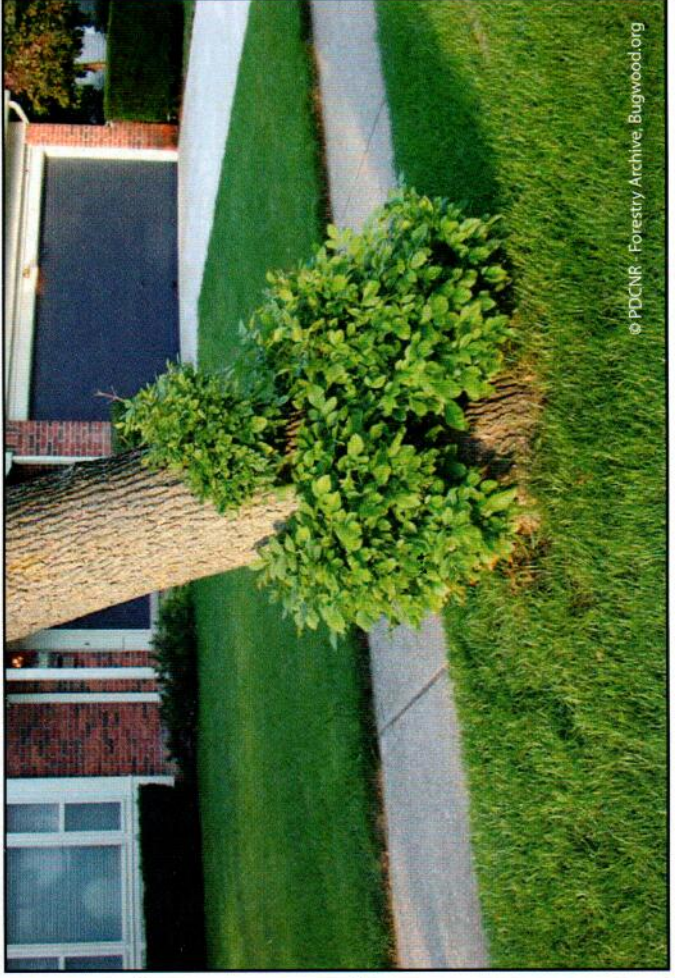
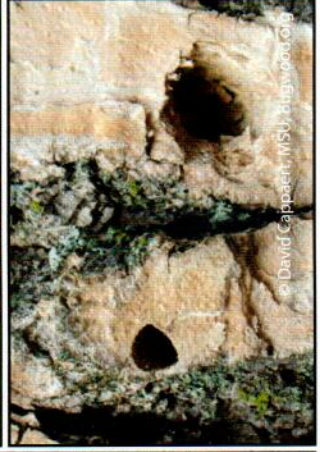
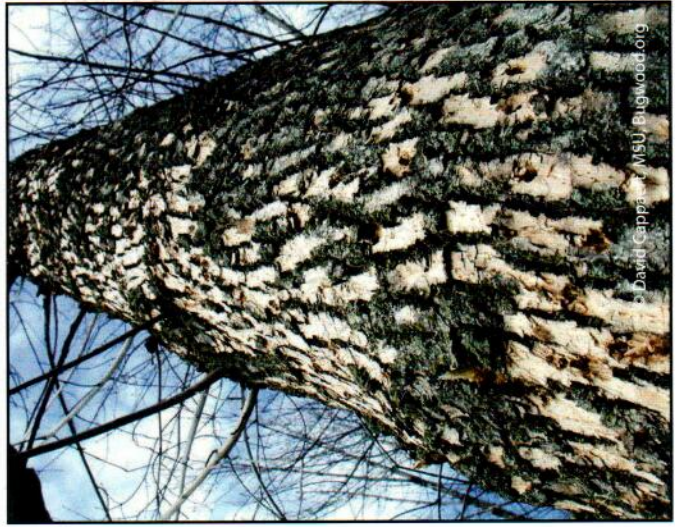
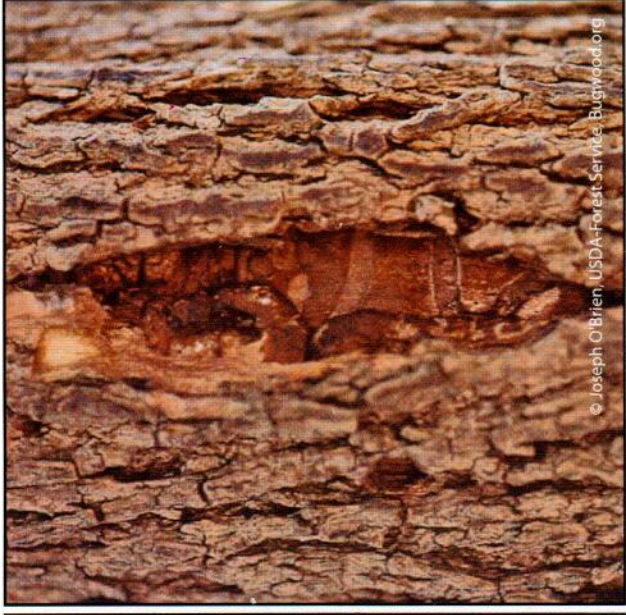
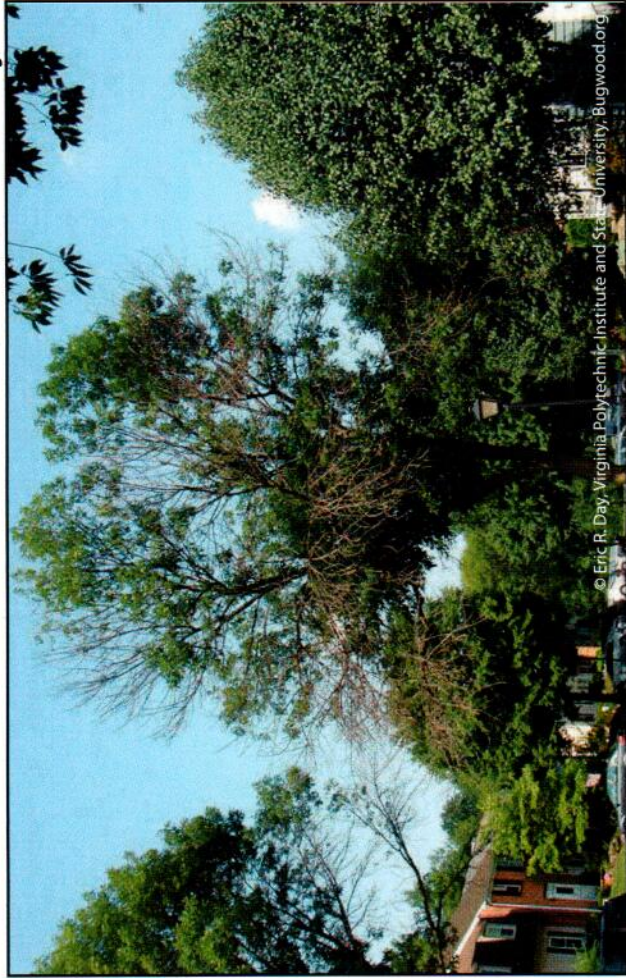
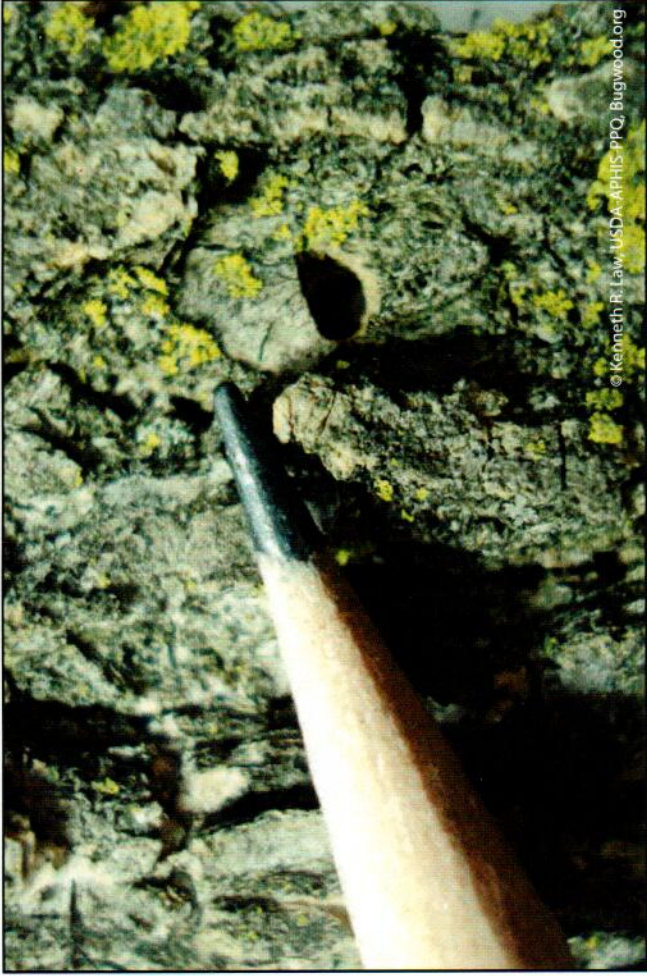
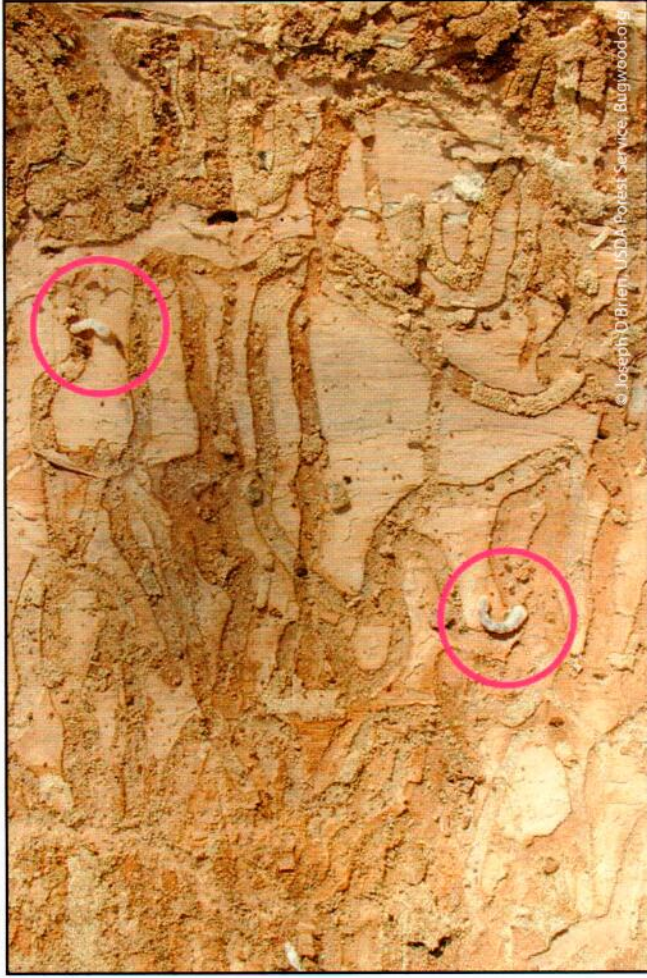
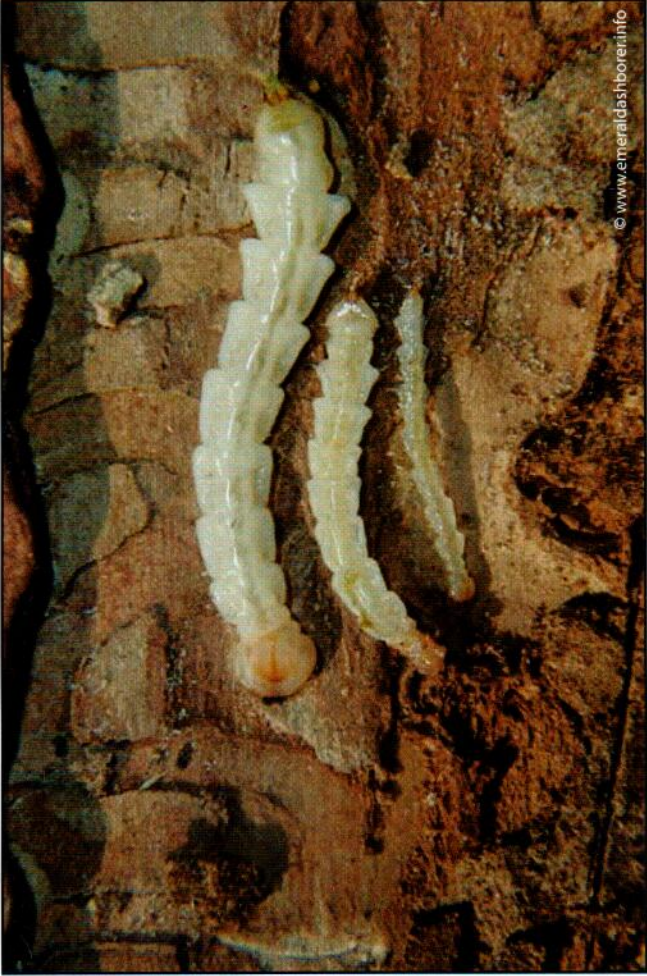
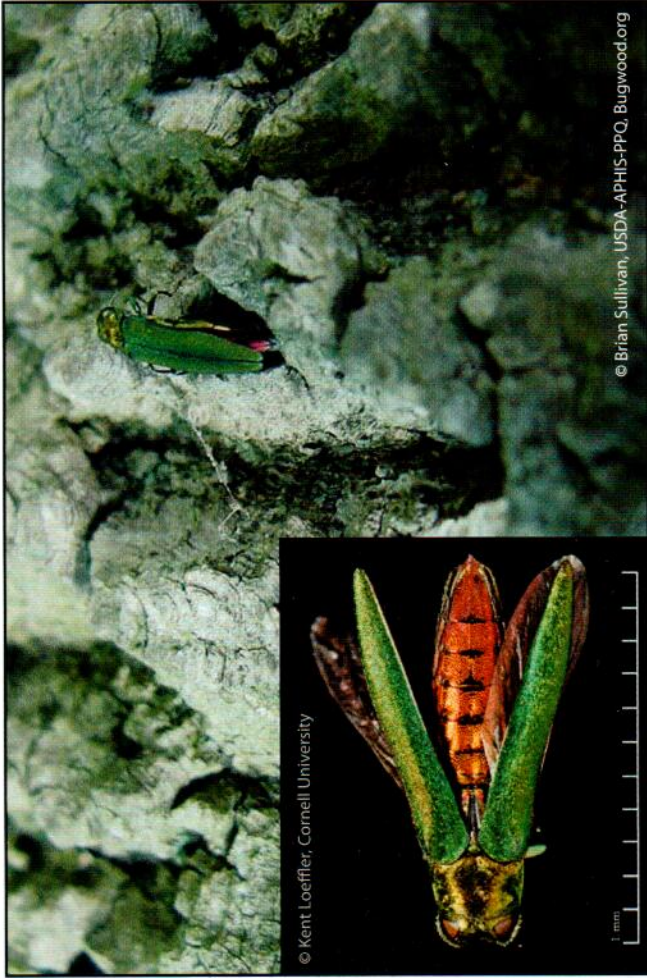


# *Emerald Ash Borer, Agrilus planipennis*



**Symptoms and signs of emerald ash borer. Clockwise from top left: Crown dieback and thinning. Early bark splitting. Late bark splitting. Woodpecker damage (3).  
revealing galleries beneath. Epicormic shoots or suckering.**





**Symptoms and signs of emerald ash borer. Clockwise from top left: Adult emerald ash borer (EAB), *Agrilus planipennis*. Different instars of larvae. D-shaped exit holes. EAB galleries with larvae. For more information visit [www.firstdetector.org](http://www.firstdetector.org)**