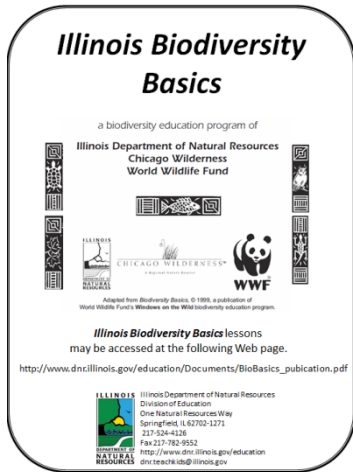


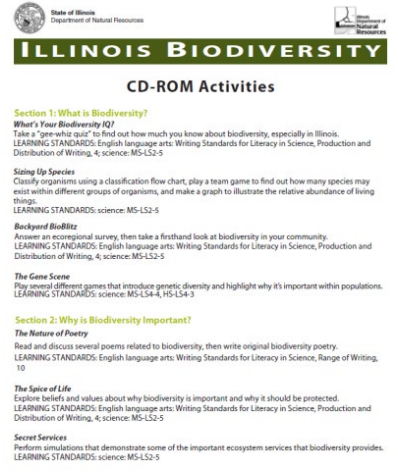


# Illinois' Invasive Species Trunk – Binder Contents Checklist Key

Illinois Biodiversity Basics  
promo page



Illinois Biodiversity CD-ROM  
activities sheet



## Images

Amur honeysuckle



bighead carp



common reed (*Phragmites*)



Brazilian elodea



# Illinois' Invasive Species Trunk – Binder Contents Checklist Key

curlyleaf pondweed



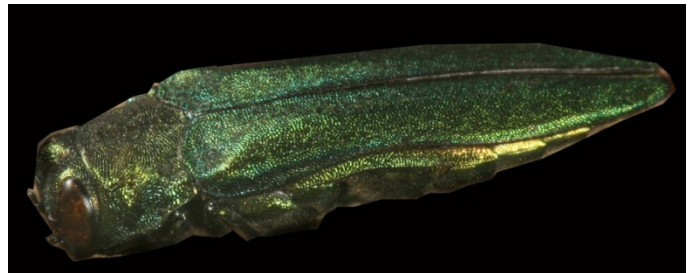
cutleaf teasel



D-shaped hole made by emerald ash borer



emerald ash borer



emerald ash borer larva



emerald ash borer serpentine galleries



# Illinois' Invasive Species Trunk – Binder Contents Checklist Key

**Eurasian watermilfoil**



**European starling**



**fishhook water flea and spiny water flea**



**garlic mustard**



**house sparrow (female)**



**house sparrow (male)**



# Illinois' Invasive Species Trunk – Binder Contents Checklist Key

Japanese honeysuckle



musk thistle



Norway maple



Oriental bittersweet



purple loosestrife



quagga mussel and zebra mussel



# Illinois' Invasive Species Trunk – Binder Contents Checklist Key

round goby



ruffe



Russian olive



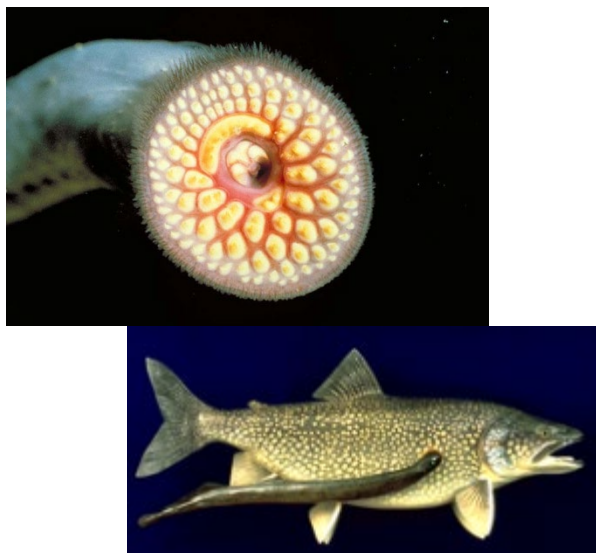
rusty crayfish



salt cedar



sea lamprey



# Illinois' Invasive Species Trunk – Binder Contents Checklist Key

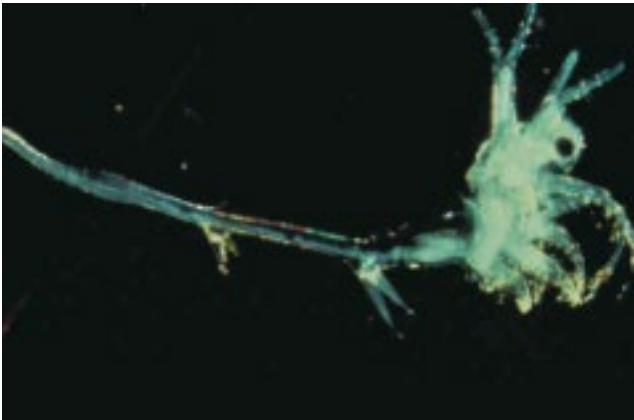
silver carp



tree-of-heaven



water flea



winter creeper



zebra mussels covering a native freshwater mussel



## Invasive Species of the Great Lakes kit instructions and contents

### BioQuest® Invasive Species of the Great Lakes

#### Teacher's Guide

We need to educate outdoor users so they can recognize something that does not belong or at least have the precautions to take to be part of the solution, not part of the problem. Using the materials in this kit and resources available through the Internet, we hope to accomplish the following objectives:

- Introduce basic concepts – competition for resources, ecological impacts, dispersal, control, and prevention as related to nonnative (exotic) species
- Define terms associated with nonnative species and aquatic ecology
- Demonstrate the use of technological resources available to assist in learning about nonnative species
- Increase student awareness of the important role they have in natural resource protection

#### Table of Contents

Teacher's Guide.....	1
Background for Teachers.....	2
Characteristics of Invasive and Indigenous Species.....	3
Teacher's Questions and Materials About Invasive Species.....	4
Terms.....	5
Food Web Game.....	6
Word Finder Game.....	7
Word Finder Game Key.....	8
Student Guide to Invasive Species.....	9
Zebra Mussel Life Cycle.....	10
Student Questions and Activities.....	11
Invasive Species Fact Sheets.....	13-18
-Zebra Mussel.....	Sea Lamprey
Round Gobie.....	Sea Lamprey
Ruffe.....	Rainbow Smelt
Purple Loach.....	Three-Spine Stickle Back
Purple Loach.....	Spray Waterflea
Distribution Maps.....	19-27
Zebra Mussel.....	Ruffe
Round Gobie.....	Rainbow Smelt
Sea Lamprey.....	Spray Waterflea
Mudminnow.....	
Purple Loach.....	

PRINTED IN U.S.A. 07/10



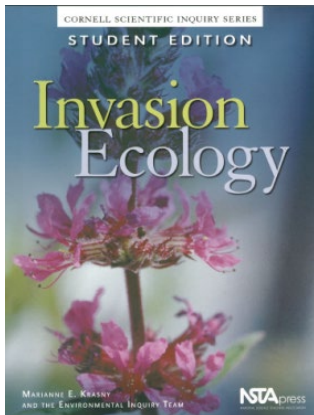


# Illinois' Invasive Species Trunk – Large Container Contents Checklist Key

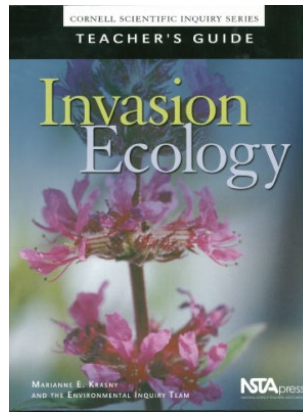
## Emerald Ash Borer Identification Kit



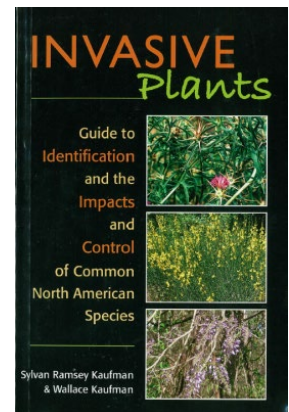
## Invasion Ecology – Student Education book



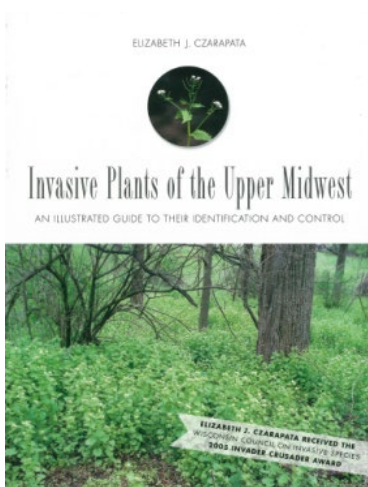
## Invasion Ecology – Teacher's Guide book



## Invasive Plants guide



## Invasive Plants of the Upper Midwest book



## Invasive Species of the Great Lakes kit



# Illinois' Invasive Species Trunk – Envelope Contents Checklist Key

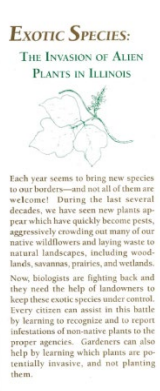
**Aquatics Illinois CD-ROM**



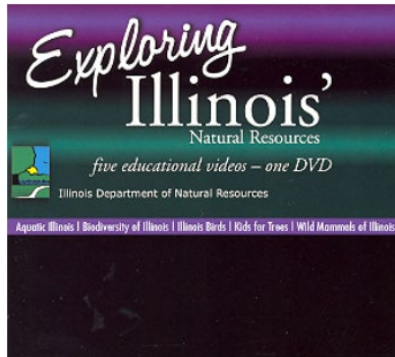
**Biodiversity of Illinois CD-ROMs: Volumes I, II & III**



**Exotic Species: The Invasion of Alien Plants in Illinois brochure**



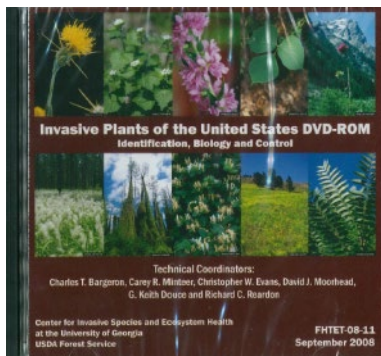
**Exploring Illinois' Natural Resources DVD**



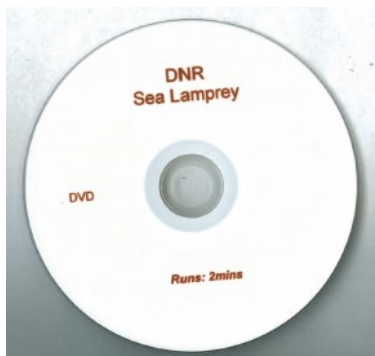
**Illinois Biodiversity CD-ROM**



**Invasive Plants of the United States DVD-ROM**



**Sea Lamprey DVD**



**zebra mussel shells**



**Illinois' Invasive Species Trunk – Large Container Contents Checklist Key**

**garlic mustard replica**



**purple loosestrife replica**

