

# Amur honeysuckle

*Lonicera maackii*



# bighead carp

*Hypophthalmichthys nobilis*



Photo © David Riecks, University of Illinois

# Brazilian elodea

*Egeria densa* Planch



# common reed (*phragmites*)

*Phragmites australis*



Left Photo © Leslie J. Mehrhoff, University of Connecticut, Bugwood.org

Right photo ©Jil M. Swearingen, United States Department of the Interior National Park Service, Bugwood.org

# curlyleaf pondweed

*Potamogeton crispus*



© Chris Evans, River to River Colorado Weed Management Association, Bugwood.org

# cutleaf teasel

*Dipsacus laciniatus* L.



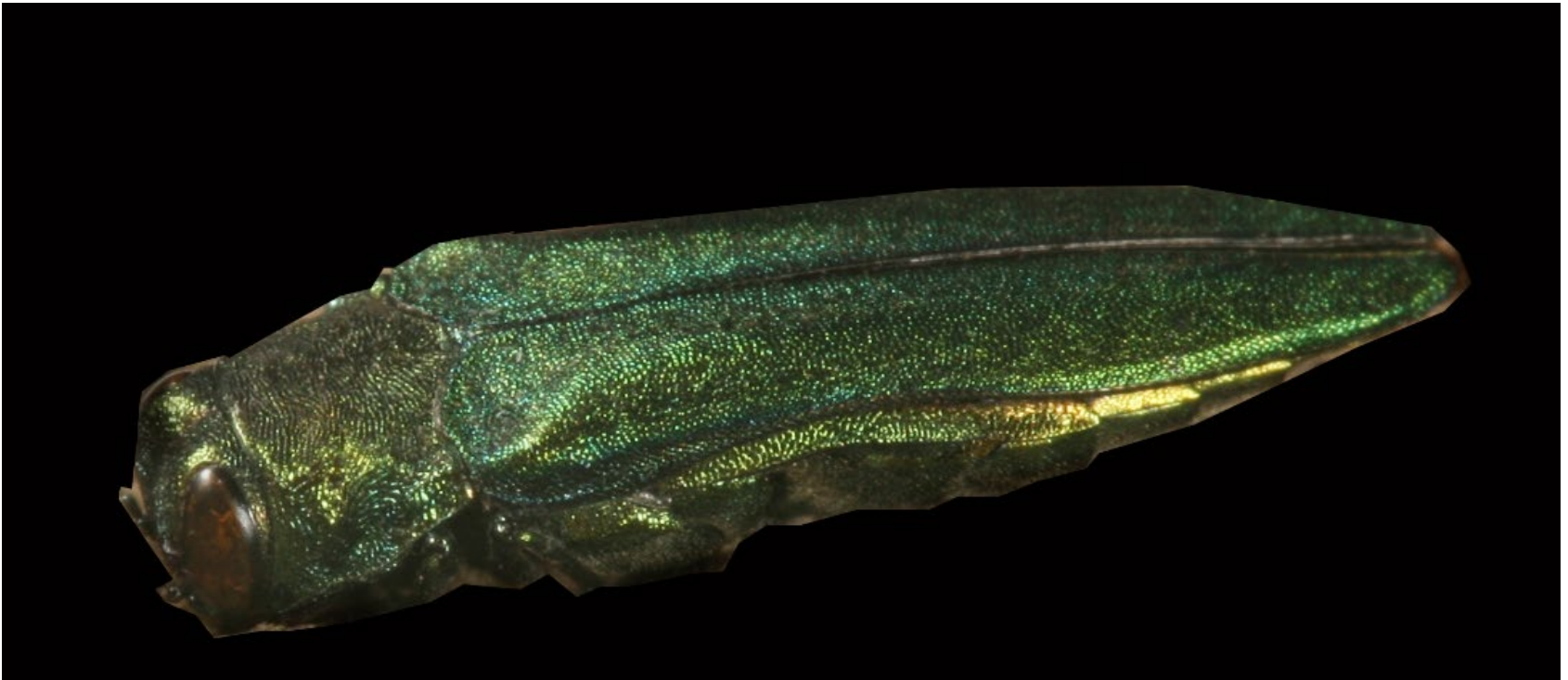
Photo © Todd Pfeiffer, Klamath County Weed Control, Bugwood.org

# D-shaped hole made by emerald ash borer



# emerald ash borer

*Agrilus planipennis*





# Emerald ash borer larva (*Agrilus planipennis*)



# emerald ash borer serpentine galleries



Photo © Kelly Estes, Illinois Cooperative Agricultural Pest Survey

# Eurasian watermilfoil

*Myriophyllum spicatum*



Photo © Alison Fox, University of Florida, Bugwood.org

# European starling

*Sturnus vulgaris*



Photo © David W. Brewer, DWBrewer Imaging

# fishhook waterflea and water flea

*Cercopagis pengoi*

*Bythotrephes cederstroemi*

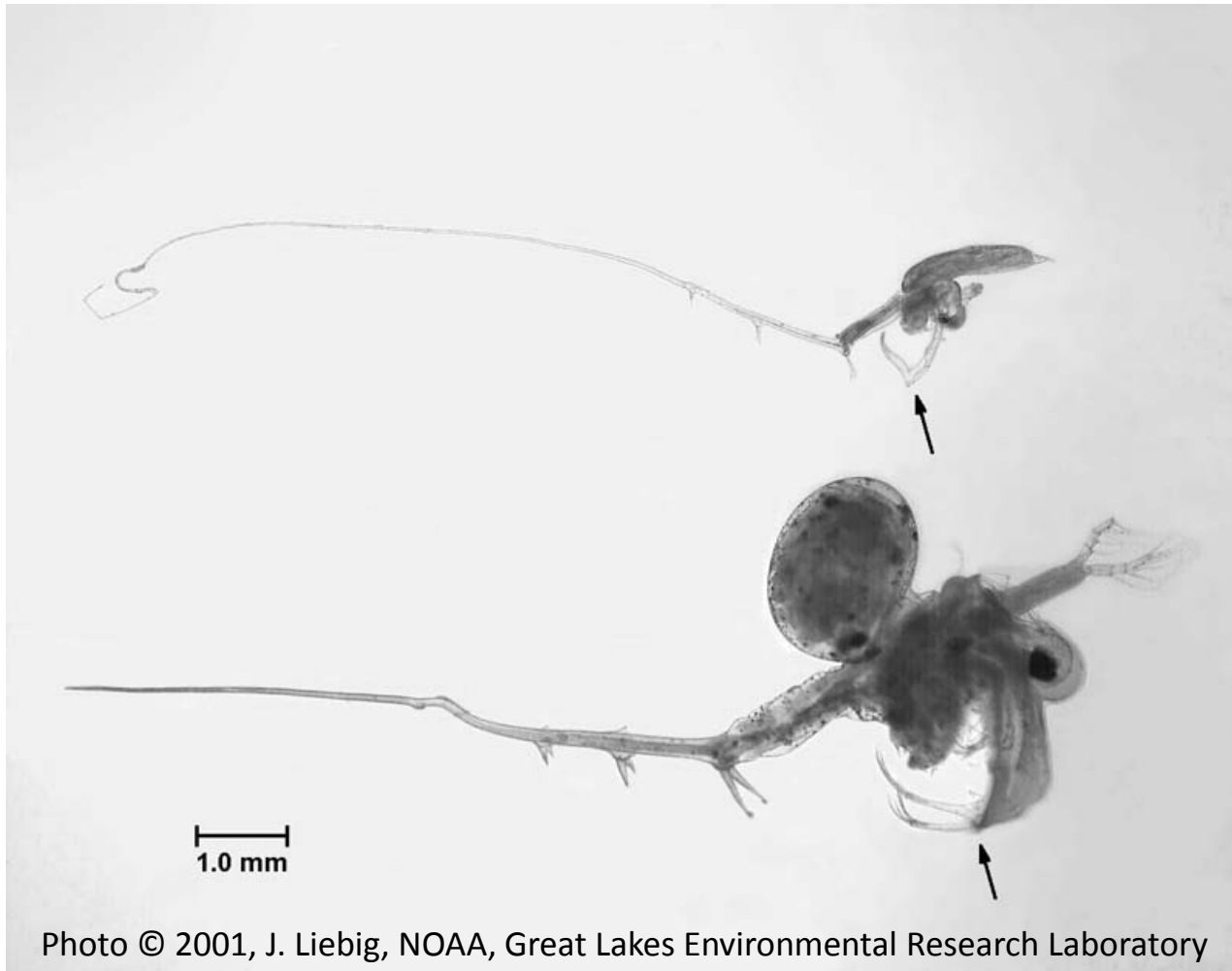


Photo © 2001, J. Liebig, NOAA, Great Lakes Environmental Research Laboratory

# garlic mustard

*Alliaria petiolata*



# house sparrow (female)

*Passer domesticus*



© Mark Jankura

# house sparrow (male)

*Passer domesticus*



© Mark Jankura



# Japanese honeysuckle

*Lonicera japonica*



© Chris Evans, River to River CWMA, Bugwood.org



© Chuck Barger, University of Georgia, Bugwood.org

# musk thistle

*Carduus nutans*



# Norway maple

*Acer platanoides*



© Jan Samanek, State Phytosanitary Administration, Bugwood.org

# Oriental bittersweet

*Celastrus orbiculatus*



© James H. Miller, USDA Forest Service, Bugwood.org

# purple loosestrife

*Lythrum salicaria*



UGA1391156

# quagga mussels (top row) and zebra mussels (bottom row)

*Dreissena rostriformis bugensis*

*Dreissena polymorpha*



# round goby

*Neogobius melanostomus*



© Eric Engbretson, Engbretson Underwater Photography

# ruffe

*Gymnocephalus cernuus*



provided by zhaubasar/pond5.com



# Russian olive

*Elaeagnus angustifolia*



# rusty crayfish

*Orconectes rusticus*



© Eric Engbretson, Engbretson Underwater Photography

# salt cedar

*Tamarix spp.*



# sea lamprey

*Petromyzon marinus*



Photos courtesy Great Lakes Fishery Commission

# silver carp

*Hypophthalmichthys molitrix*



# tree of Heaven

*Ailanthus altissima*



UGA2190053



UGA1330046

# water flea

*Bythotrephes cederstroemi*



# winter creeper

*Euonymus fortunei*



UGA5330072

© Chris Evans, River to River CWMA, Bugwood.org



UGA2307144

© James H. Miller, USDA Forest Service, Bugwood.org



# zebra mussels

*Dreissena polymorpha*

