

**Vascular Plant List for Robinson Park South
A Peoria Park District Conservation Area
And Illinois State Nature Preserve**



**Prepared By
Mike Murphy, Botanist
Forest Park Nature Center
and
Mike Miller, Chief Naturalist
Forest Park Nature Center
5809 Forest Park Drive
Peoria Heights, IL 61614
(309)686-3360**

September 27, 2001



Introduction

The Peoria Park District (PPD) serves not only as a recreational agency, but also as a conservation agency for the citizens of Central Illinois. The PPD owns and manages over 8,000 acres of parklands. Over 5,000 acres are conservation parks in the Peoria Wilds Resource Rich area and The Peoria Bluff's Legacy Area, which consists of large forested tracts located within the bluffs overlooking the former floodplain of the Illinois River north of the City of Peoria.

Robinson Park South totals 326.54 acres. Within this parcel 151.5 acres are dedicated as Illinois State Nature Preserve. The park is currently under an ecological restoration plan approved by the Peoria Park Board and the Illinois Nature Preserves Commission. The restoration plan is being implemented by Peoria Park District Staff and volunteers from Peoria Wilds Volunteer Stewardship Network. The area of Robinson Park that is a dedicated Illinois State Nature Preserve is also listed on the Illinois Natural Areas Inventory.

Location and Natural Communities

The 326 Acres of Robinson Park is located within the south half of Section 28 and the north half of Section 33 in Medina Township (see figure 1). It has steep topography ranging from 752 feet in the west end to 520 feet on the east end. The land is dissected by 3 major drainages running from west to east. The northern most is unnamed, the middle drainage is known as Moon Hollow, and the southern drainage is known as Strawberry Hollow (see figure 2). Aerial photography with park boundaries is shown in figure 3.

The Natural Communities, as defined by the Illinois Natural Areas Inventory Technical Report, located in Robinson Park South include:

- 1- High Gradient Stream
- 2- Mesic Upland Forest
- 3- Dry-Mesic Upland Forest
- 4- Dry-Mesic Savanna
- 5- Glacial Drift Hill Prairie

The locations of these natural communities are located on the attached covertype map (figure 4).

Conditions of Natural Features

The Natural Communities in Robinson Park represent some of the highest quality remnants of these communities left in this section of Illinois. There is an extensive complex of Glacial Drift Hill Prairies on the south-facing slope above Moon Hollow. These Hill prairies range in quality from "Grade A" to "Grade C." One hill prairie is threatened by severe erosion resulting from a gravel borrow pit that was established in the mid 1920's. Steps are being developed to solve this problem. Tree invasion of the Glacial Drift Hill Prairies is a major detriment to their long-term survival. There has been a 90 percent loss of Hill Prairie habitat to forest succession since 1938.

The woodland communities found within Robinson Park are dominated with Oak and Hickory in the overstory, however there is moderate to severe overpopulation of mesophytic tree species (Sugar Maple in particular) in the understory which have eliminated the reproduction of oak and hickory species. A vast majority of the sugar maples that are overpopulating are in the 50 to 60 year age class and range in size from 4 to 8 inches in diameter. The ecological

restoration plan for the park calls for the thinning of mesophytic tree species in this age/size class. The age composition of the overpopulation of mesophytic tree species is directly tied to the cessation of periodic wildfires. This is very typical in many of the oak-hickory woodlands within the Illinois River Bluff's Legacy Area.

The High Gradient Stream habitats within Robinson Park are probably the most beleaguered habitats present within the park. The streams have experienced severe streambed and bank erosion in the last decade. In The average base depth of the streambed has fallen 6 feet. The regularity of permanent water has also declined. This hydrologic change is attributed to increased development and resultant stormwater runoff from the top of the watershed. Most of this development was done prior to the development of enhanced stormwater retention requirements and erosion ordinances. The collapse of these streambeds threatens to negatively alter all of the surrounding habitats. We are working closely with the Tri-County Regional Planning Commission in developing ways of stabilizing these systems.

All of the habitats within Robinson Park are threatened by invasive exotic species including Garlic Mustard, Black Locust, and Sweet Clover.

Discussion of Plant List

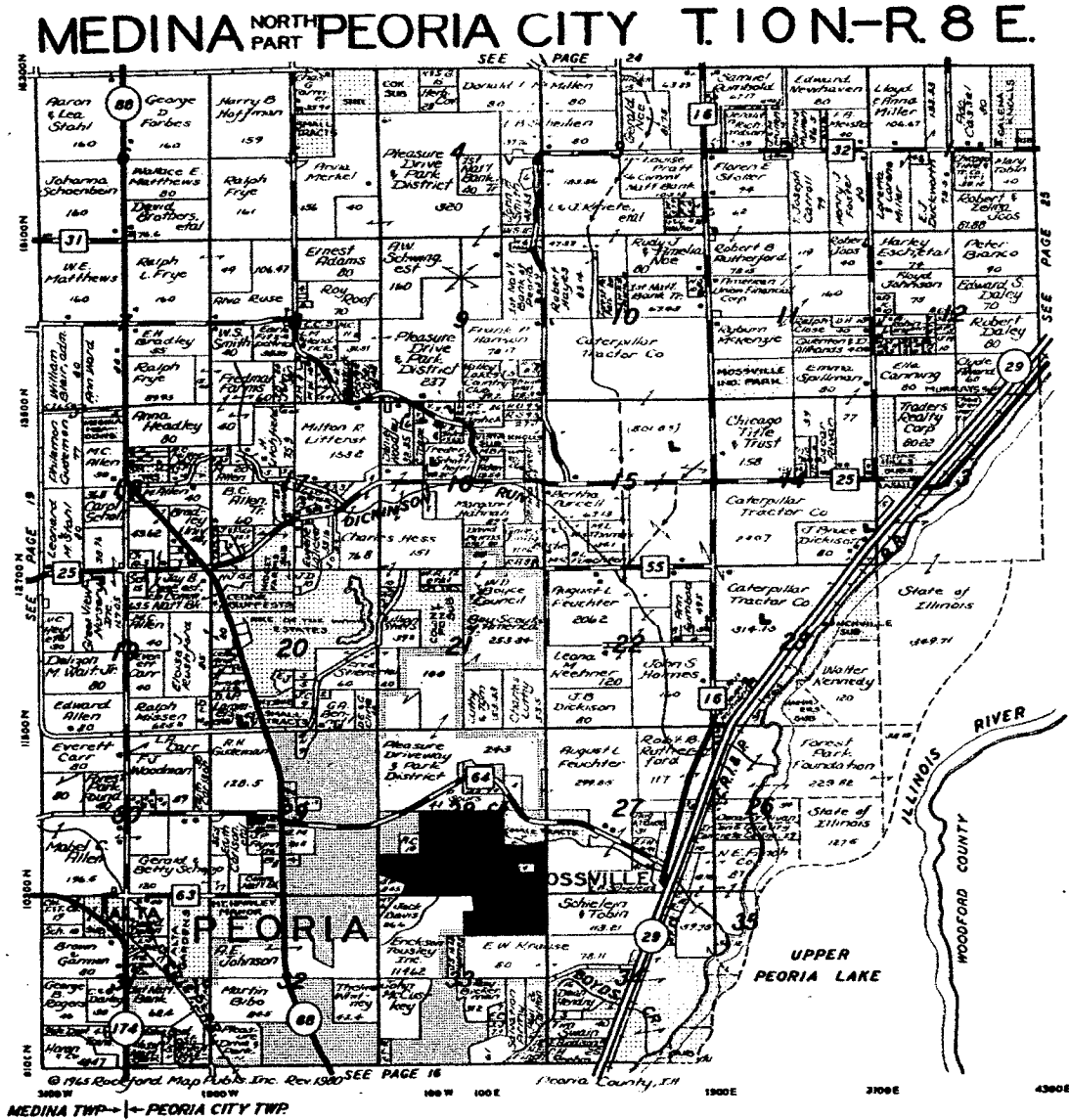
The vascular plant list was developed in the 2000 growing season. Periodic visits by botanists traversed the park in a method that provided coverage of the various covertypes found within the preserve. As with any vegetative list, this should not be considered a "final product," but rather an excellent starting point and one that should be added to over time.

Botanists documented 332 species over the season. Only one species, *Agalinus skinnersiana*, is listed as an Illinois Threatened species. It is regularly found on the hill prairie habitats within the preserve and is increasing in population in response to prescribed burns and habitat restoration efforts. Another species, *Aster shreberi*, was recently delisted as an Illinois Threatened Species. Its population in the park is quite high. Of the 332 species, 27 are known introduced exotic species. Nine of these can be considered invasive and should be controlled.

Funding Opportunities

This plant survey was funded by a grant from the Illinois Wildlife Preservation Fund. Further ecological restoration activities will be funded by a grant from C2000. Future funding for stream stabilization should be pursued through IEPA's Section 319(H) program.

Figure 1.
Location of Robinson Park on Medina Township Plat



- Robinson Park
- Approximate Nature Preserve Boundary

Figure 2
Topographic Map of Robinson Park South



Figure 3
Aerial Photograph of Robinson Park South

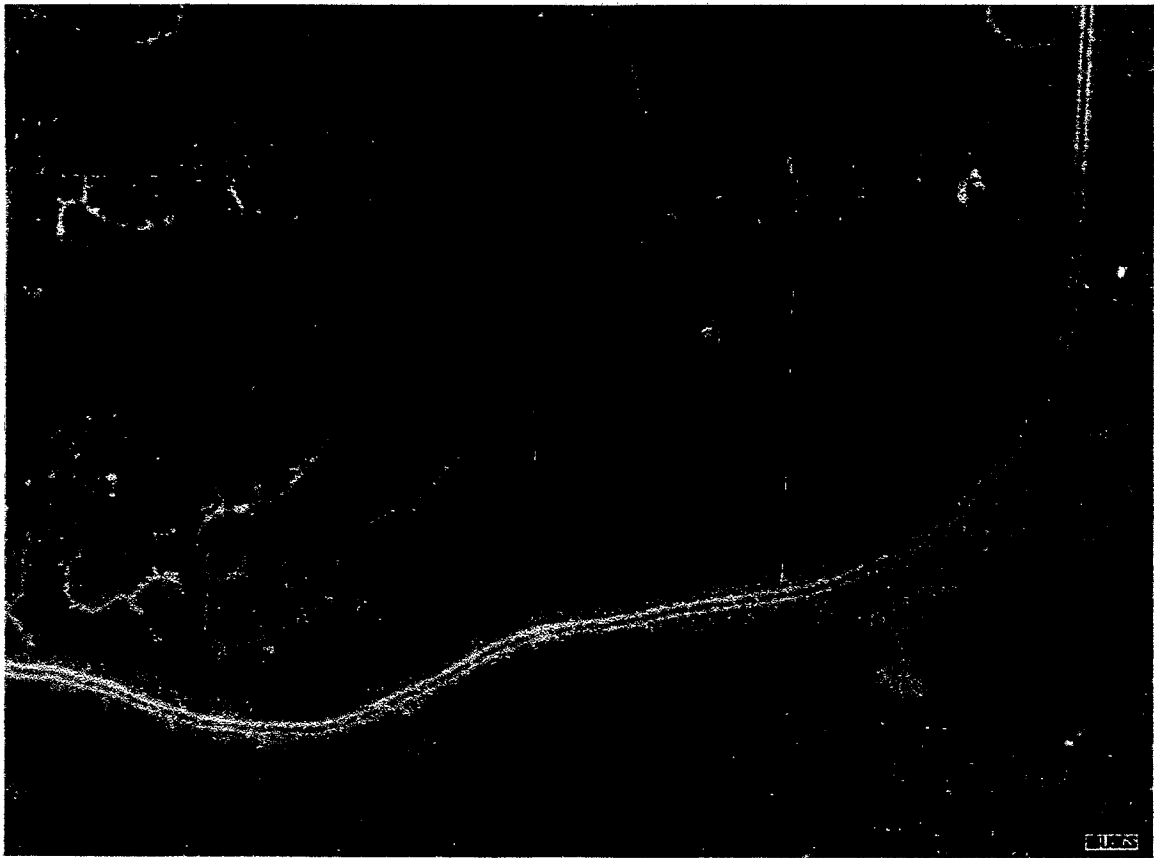
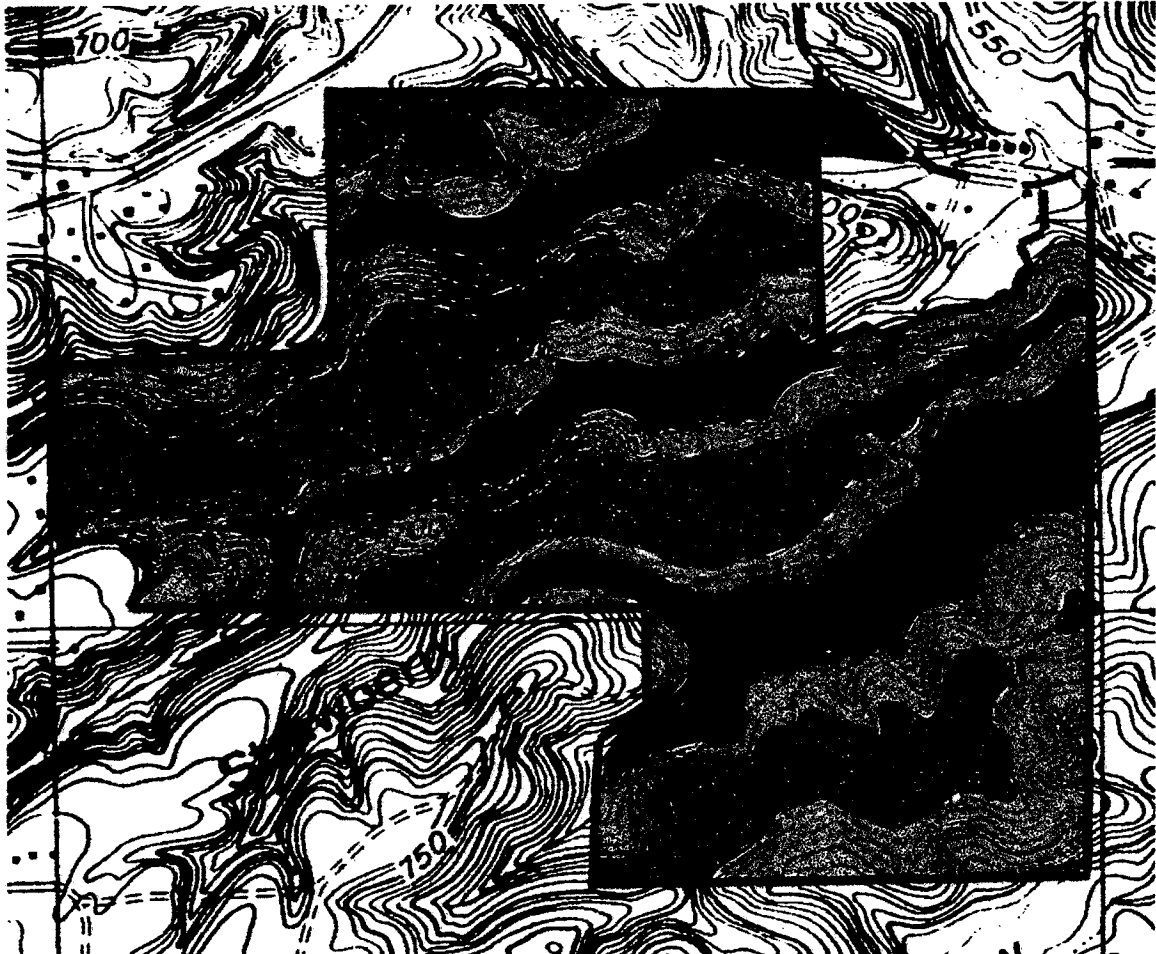


Figure 4
Vegetative Covertypes Map of Robinson Park South

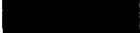



Scale
1:11520

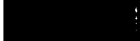
Contour Interval
10 Feet

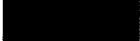



Key to Vegetative Covertypes Map

 **Mesic Upland Forest** Dominated by mixed hardwoods (Burr Oak, Red Elm, Hackberry, Sy-camore, Walnut) with rich groundcover of wildflowers (Michigan Lily, Trillium species, Virginia Bluebells). Understory shrubs include Wafer Ash, Elderberry. Of our forest covertypes Mesic Upland Forest represents the wettest end of the moisture gradient. Ecologically, it is an area that pro-motes good tree growth and offers refuge for fire intolerant species such as Sugar Maple. It is one of the only habitats that has mature Sugar Maple as an overstory species with a high importance value.

 **Dry-Mesic Upland Forest-** Plant communities with relatively closed canopy (>80% closure) dominated by White Oak, Shagbark Hickory, Red Oak. Understory consisting of Sassa-fras, Iron Wood. Groundcover includes Black Snakeroot, Sweet Cicely, and Trefoil Species. This plant community depends of periodic fire to maintain diversity and control opportunistic invasion of Sugar Maple.

 **Dry-Mesic Savanna-** Similar tree composition as above with a more open canopy(<80% closure). Additional tree species include Chinquapin Oak, Black Oak. Additional Under-story Species include Hazelnut, Viburnum Species. Groundcover includes Four-leaved Milkweed, Culvers Root, Aster and Goldenrod Species along with several grasses and sedges. This plant community depends of periodic fire to maintain diversity and control opportunistic invasion of Sugar Maple.

 **Glacial Drift Hill Prairie-** Openings with no tree cover that support rich populations of prairie species including Leadplant, Silky Aster, Scurf Pea, Bird's-foot Violet, Seneca Snakeroot. This plant community depends of periodic fire to maintain diversity and control opportunistic invasion of woody species including Dogwood and Oaks.

 **High Gradient Stream-** These streams are currently intermittent as to water capacity. Severe erosion is occurring in these areas. There is no indicative vegetation left in these sites.

Vascular Plant List of Robinson South.

See the end of the list for keys as to symbols used in the common names and habitat preference columns.

Common Name	Genus species	Habitat
Three-seeded Mercury	<i>Acalypha rhomboidea</i>	1-4
Box Elder	<i>Acer negundo</i>	1-2
Sugar Maple	<i>Acer saccharum</i>	2-4
White Baneberry	<i>Actea pachypoda</i>	2-3
Maidenhair Fern	<i>Adiantum pedatum</i>	2-4
Pale false-foxglove (ST)	<i>Agalinas skinneriana</i>	4-5
Agrimony	<i>Agrimonia gryposepala</i>	2-4
Beaked agrimony	<i>Agrimonia rostellata</i>	2-4
Redtop	<i>Agrostis alba</i>	4-5
Tickle Grass	<i>Agrostis hyemalis</i>	2-4
Garlic Mustard (I)	<i>Allaria petiolata</i>	2-3
Common Ragweed	<i>Ambrosia artemisiifolia</i>	4-5
Service Berry	<i>Amelanchier arboria</i>	2-4
Leadplant	<i>Amorpha canescens</i>	4-5
Hog Peanut	<i>Amphicarpa bracteata</i>	2-3
Big Bluestem	<i>Andropogon gerardi</i>	4-5
Little Bluestem	<i>Andropogon scoparius</i>	4-5
Thimbleweed	<i>Anemone cylindrica</i>	4-5
Tall Anemone	<i>Anemone virginiana</i>	2-4
Pussytoes	<i>Antennaria plantaginifolia</i>	4-5
Spreading Dogbane	<i>Apocynum androsaeifolium</i>	4-5
Dogbane	<i>Apocynum cannabinum</i>	4-5
Columbine	<i>Aquilegia canadensis</i>	2-4
Sicklepod	<i>Arabis canadensis</i>	3-4
Smooth Rock Cress	<i>Arabis laevigata</i>	3-4
Wild Sarsaparilla	<i>Aralia nudicalis</i>	2-3
Spikenard	<i>Aralia racemosa</i>	2-3
Common Burdock (I)	<i>Arctium minus</i>	2-4
Green Dragon	<i>Arisaema dracontrium</i>	2-3
Jackin the Pulpit	<i>Arisaema triphyllum</i>	2-3
Dutchman's Pipe	<i>Aristolochia serpentaria</i>	2-3
Wild Ginger	<i>Asarum acuminatum</i>	2-4
Poke Milkweed	<i>Asclepias exaltata</i>	3-4
Purple Milkweed	<i>Asclepias purpurascens</i>	3-4
Milkweed	<i>Asclepias quadrifolia</i>	3-5
Common Milkweed	<i>Asclepias syriaca</i>	3-5
Butterfly Weed	<i>Asclepias tuberosa</i>	4-5
Green Milkweed	<i>Asclepias veridiflora</i>	5
Milkweed	<i>Asclepias verticillata</i>	4-5
Pawpaw	<i>Asimina triloba</i>	2-3

Garden Asparagus (I)	<i>Asparagus officinalis</i>	4-5
Aster	<i>Aster anomalus</i>	4-5
Sky-blue Aster	<i>Aster azureus</i>	4-5
Blue Wood Aster	<i>Aster cordifolius</i>	3-5
Aster	<i>Aster ericoides</i>	3-5
Smooth Aster	<i>Aster laevis</i>	4-5
Aster	<i>Aster lateriflorus</i>	3-5
Aromatic Aster	<i>Aster oblongifolius</i>	3-5
Aster	<i>Aster pilosus</i>	3-5
Arrow-leaved Aster	<i>Aster sagittifolius</i>	2-4
Silky Aster	<i>Aster sericeus</i>	5
Aster	<i>Aster shortii</i>	4-5
Shreber's Aster	<i>Aster shreberi</i>	2-4
Milk-vetch	<i>Astragalus canadensis</i>	3-4
False Foxglove	<i>Aureolaria grandiflora var. pulchera</i>	3-5
White False Indigo	<i>Baptisia leucantha</i>	5
Wild False Indigo	<i>Baptisia leucophaea</i>	5
Japanese Barberry (I)	<i>Berberis thunbergii</i>	1-3
Rattlesnake Fern	<i>Botrychium virginianum</i>	2-3
Side Oats Grama	<i>Bouteloua cirtipendula</i>	4-5
Long-awned Wood Grass	<i>Brachyelytrum erectum</i>	3-4
Downy Chess (I)	<i>Bromus tectorum</i>	1-4
Brome Grass	<i>Bromus purgans</i>	2-5
Pale Indian-plantain	<i>Cacalia atriplicifolia</i>	3-5
Tall Bellflower	<i>Campanula americana</i>	2-4
Sedge	<i>Carex albursina</i>	3-4
Pale Sedge	<i>Carex blanda</i>	3-4
Brown Headed Sedge	<i>Carex cephalophora</i>	3-4
Sedge	<i>Carex granularis</i>	2-4
Sedge	<i>Carex grisea</i>	3-4
Hairy Green Sedge	<i>Carex hirsutella</i>	3-4
Hairy Wood Sedge	<i>Carex hirtifolia</i>	2-4
Carex	<i>Carex hitchcockiana</i>	2-4
Grass Sedge	<i>Carex jamesii</i>	2-4
Mead's Stiff Sedge	<i>Carex meadii</i>	3-4
Sand-bracted Sedge	<i>Carex muhlenbergii</i>	3-4
Pen Sedge	<i>Carex pennsylvanica</i>	3-4
Sedge	<i>Carex rosea</i>	3-4
Common Stiff Sedge	<i>Carex tetanica</i>	2-4
Bitternut Hickory	<i>Carya cordiformis</i>	2
Shagbark Hickory	<i>Carya ovata</i>	2-4
Mockernut Hickory	<i>Carya tomentosa</i>	2-4
Catalpa(I)	<i>Catalpa speciosa</i>	1
Blue Cohosh	<i>Caulophyllum thalictroides</i>	2-4
New Jersey Tea	<i>Ceanothus americanus</i>	3-5

Climbing Bittersweet	<i>Celastrus scandens</i>	3-4
Hackberry	<i>Celtis occidentalis</i>	2-3
Redbud	<i>Cercis canadensis</i>	2-4
Lamb's Quarters (I)	<i>Chenopodium album</i>	2-5
Wood Reed	<i>Cinna arundinacea</i>	1-2
Enchanter's Nightshade	<i>Circaea lutetiana var. canadensis</i>	2-3
Tall Thistle	<i>Cirsium altissimum</i>	3-4
Spring Beauty	<i>Claytonia virginica</i>	2-4
False Toadflax	<i>Comandra umbellata</i>	5
Dayflower (I)	<i>Commelina communis</i>	1-2
Upright Bindweed	<i>Convolvulus spithameus</i>	4-5
Horseweed	<i>Conyza canadensis</i>	1-2
Spotted Coralroot Orchid	<i>Corallorhiza maculata</i>	3-4
Tall Tickseed	<i>Coreopsis tripteris</i>	4-5
Stiff Coreopsis	<i>Coreopsis palmata</i>	4-5
Alternate-leaf dogwood	<i>Cornus alternifolia</i>	2-3
Rough Leaved Dogwood	<i>Cornus drummondii</i>	3-5
Gray Dogwood	<i>Cornus racemosa</i>	3-5
Hazlenut	<i>Corylus americana</i>	3-4
Hawthorn	<i>Crataegus pruinosa</i>	2-4
Hawthorn	<i>Crataegus sp.</i>	2-4
Honewort	<i>Cryptotaenia canadensis</i>	2-3
Brittle Fern	<i>Cystopteris protusa</i>	2-4
Poverty Oats	<i>Danthonia spicata</i>	4-5
Cut Leaved Toothwort	<i>Dentaria lacinata</i>	2-4
Tick Treefoil	<i>Desmodium canescens</i>	2-4
Pointed-leaved Tick-trefoil	<i>Desmodium glutinosum</i>	3-4
Tick Trefoil	<i>Desmodium nudiflorum</i>	2-4
Tick Trefoil	<i>Desmodium paniculatum</i>	2-4
Dutchman's Breeches	<i>Dicentra cucullaria</i>	2-3
Wild Yam	<i>Dioscorea quaternata</i>	2-3
Florist's Shield Fern	<i>Dryopteris intermedia</i>	2-3
Pale Purple Coneflower	<i>Echinacea pallida</i>	4-5
Purple Coneflower	<i>Echinacea purpurea</i>	3-4
Autumn Olive (I)	<i>Elaeagnus umbellata</i>	2-5
Canada Wild Rye	<i>Elymus canadensis</i>	3-5
Bottlebrush Grass	<i>Elymus hystrix</i>	3-4
Slender Wild Rye	<i>Elymus villosus</i>	3-4
Whitetop	<i>Erigeron annuus</i>	3-5
Fleabane	<i>Erigeron philadelphicus</i>	3-5
Daisy Fleabane	<i>Erigeron strigosus</i>	3-5
Tall Thoroughwort	<i>Eupatorium altissimum</i>	2-4
Joe-pye Weed	<i>Eupatorium perpureum</i>	2-4
White Snakeroot	<i>Eupatorium rugosum</i>	1-4
Late Boneset	<i>Eupatorium serotinum</i>	3-4

Boneset	<i>Eupatorium sessifolium</i>	2-4
Flowering Spurge	<i>Euphorbia corollata</i>	4-5
Tall Fescue (I)	<i>Festuca elatior</i>	1-4
Fescue	<i>Festuca obtusa</i>	2-4
Meadow Fescue (I)	<i>Festuca pratensis</i>	2-4
Wild Strawberry	<i>Fragaria virginiana</i>	2-4
White Ash	<i>Fraxinus americana</i>	2-4
Goose-grass	<i>Galium aparine</i>	3-4
Wild Licorice	<i>Galium circaezans</i>	2-4
Shining Bedstraw	<i>Galium concinnum</i>	3-4
Sweet-scented Bedstraw	<i>Galium triflorum</i>	3-4
Downy Gentian	<i>Gentiana puberulenta</i>	4-5
Stiff Gentian	<i>Gentiana quinquefolia</i>	2,4
Wild Geranium	<i>Geranium maculatum</i>	1-3
White Avens	<i>Geum canadense</i>	2-4
Ground-ivy (I)	<i>Glechoma hederacea</i>	1-2
Honey Locust	<i>Gleditsia tricanthos</i>	2-3
Fowl Meadow Grass	<i>Glyceria striata</i>	2-3
Kentucky Coffee Tree	<i>Gymnocladus dioicus</i>	2-3
Stickseed	<i>Hackelia virginiana</i>	2-4
Witch Hazel	<i>Hamamelis virginiana</i>	2-3
Sunflower	<i>Helianthus divaricatus</i>	3-4
Sawtooth Sunflower	<i>Helianthus grosseserratus</i>	2-4
Sunflower	<i>Helianthus hirsutus</i>	3-5
Western Sunflower	<i>Helianthus occidentalis</i>	4-5
Sunflower	<i>Helianthus strumosus</i>	3-5
False Sunflower	<i>Heliopsis helianthoides</i>	3-5
Hepatica	<i>Hepatica nobilis</i>	2-4
Alumroot	<i>Heuchera richardsonii</i>	3-4
Hawk Weed	<i>Hieracium scabrum</i>	3-4
Wild Hydrangea	<i>Hydrangea arborescens</i>	1-3
Round Fruited St. John's-Wort	<i>Hypericum sphaerocarpum</i>	3-5
Yellow star grass	<i>Hypoxis hirsuta</i>	4-5
Pale Touch-me-not	<i>Impatiens pallida</i>	1-3
Wild Sweet-potato	<i>Ipomoea pandurata</i>	1-3
White Walnut (WL)	<i>Juglans cinerea</i>	2-3
Black Walnut	<i>Juglans nigra</i>	2-4
Pathrush	<i>Juncus tenuis</i>	3-5
Red Cedar	<i>Juniperus virginiana</i>	4-5
Dwarf Dandelion	<i>Krigia biflora</i>	4-5
False Boneset	<i>Kuhnia eupatorioides</i>	3-4
Wild Lettuce	<i>Lactuca canadensis</i>	2-4
Wood Nettle	<i>Laportea canadensis</i>	1-3
Slender Pinweed	<i>Lechea tenuifolia</i>	4-5
White Grass	<i>Leersia virginica</i>	2-4

Bushclover	<i>Lespedeza violacea</i>	4-5
Virginia Lespedesia	<i>Lespedesia virginica</i>	4-5
Rough Blazing Star	<i>Liatris aspera</i>	4-5
Blazing Star	<i>Liatrus cylindracea</i>	4-5
Flax	<i>Linum sulcatum</i>	5
Hoary Puccoon	<i>Lithospermum canescens</i>	4-5
Hairy Puccoon	<i>Lithospermum caroliniense</i>	4-5
Blue Cardinal Flower	<i>Lobelia siphilitica</i>	2-4
Armur Honneysuckle (I)	<i>Lonicera maackii</i>	1-4
Tartarian Honneysuckle (I)	<i>Lonicera tartarica</i>	1-4
Fringed Loostrife	<i>Lysimachia ciliata</i>	2-4
Iowa Crabapple	<i>Malus ioensis</i>	2-4
White Sweet Clover (I)	<i>Melilotus alba</i>	1-5
Moonseed	<i>Menispermum canadense</i>	2-4
Wild Bergamont	<i>Monarda fistulosa</i>	3-4
Pinesap	<i>Monotropa hypopithys</i>	2-4
Red Mulberry	<i>Morus rubra</i>	1-3
Muhly	<i>Muhlenbergia sobolifera</i>	2-4
Slender Satin Grass	<i>Muhlenburgia tenuiflora</i>	2-4
Catnip (I)	<i>Nepeta cataria</i>	1-3
One-flowered Cancer Root	<i>Orobanche uniflora</i>	4-5
Hairy Sweet Cicely	<i>Osmorhiza claytonii</i>	2-4
Smooth Sweet Cicely	<i>Osmorhiza longistylis</i>	2-4
Ironwood	<i>Ostrya virginiana</i>	3-4
Upright Wood Sorrel	<i>Oxalis stricta</i>	2-4
Violet Wood Sorrel	<i>Oxalis violacea</i>	2-4
Gensing	<i>Panax quinquefolius</i>	2-3
Panic Grass	<i>Panicum acuminatum</i>	3-5
Deer-tongue Grass	<i>Panicum clandestinum</i>	3-4
panic grass	<i>Panicum latifolium</i>	2-4
Panic Grass	<i>Panicum liebergii</i>	2-4
Slender leaved panic grass	<i>Panicum linearifolium</i>	3-5
Panic Grass	<i>Panicum oligosanthos</i>	3-5
Panic Grass	<i>Panicum villosissimum</i>	3-5
Forked Chickweed	<i>Paronychia canadensis</i>	3-4
Virginia Creeper	<i>Parthenocissus quinquefolia</i>	1-4
White Prairie Clover	<i>Petelostemum candidum</i>	5
Purple Prairie Clover	<i>Petelostemum purpureum</i>	5
Reed Canary Grass (I)	<i>Phalaris arundinacea</i>	1
Phlox	<i>Phlox divercata</i>	2-3
Prairie Phlox	<i>Phlox pilosa</i>	4-5
Lopseed	<i>Phryma leptostachya</i>	2-3
Ground Cherry	<i>Physalis virginiana</i>	3-4
Pokeweed	<i>Phytolacca americana</i>	2-3
Clear Weed	<i>Pilea pumila</i>	2-3

Sycamore	<i>Plantis occidentalis</i>	2
Common Plantain	<i>Plantago rugelii</i>	2-4
Canada Blue Grass (I)	<i>Poa compressa</i>	4-5
Woodland Bluegrass (I)	<i>Poa nemoralis</i>	4-5
Kentucky Blue Grass (I)	<i>Poa pratensis</i>	4-5
May Apple	<i>Podophyllum peltatum</i>	2-3
Seneca Snakeroot	<i>Polygala senega</i>	4-5
Whorled Milkwort	<i>Polygala verticillata</i>	4-5
Solomon's Seal	<i>Polygonatum commutatum</i>	2-3
Long-bristled Smartweed (I)	<i>Polygonum cespitosum</i>	1-2
Climbing False Buckwheat	<i>Polygonum scandens</i>	2-3
Virginia Knotweed	<i>Polygonum virginianum</i>	2-3
Christmas Fern	<i>Polystrichum acrostichoides</i>	2-3
Prairie Parsley	<i>Polytaenia nuttalii</i>	4-5
Cottonwood	<i>Populus deltoides</i>	1-2
Bigtooth Aspen	<i>Populus grandidentata</i>	3-4
Common Cinquefoil	<i>Potentilla simplex</i>	3-4
White Lettuce	<i>Prenanthes alba</i>	3-4
Selfheal (I)	<i>Prunella vulgaris var. lanceolata</i>	1-4
Plumb	<i>Prunus lanata</i>	2-4
Choke Cherry	<i>Prunus virginiana</i>	3-4
Wild Black Cherry	<i>Prunus serotina</i>	2-4
Scurf Pea	<i>Psoralia tenuiflora</i>	5
Wafer Ash	<i>Ptelea trifoliata</i>	2-3
Hairy Mountain Mint	<i>Pycnanthemum pilosum</i>	4-5
Pear (I)	<i>Pyrus communis</i>	4
White Oak	<i>Quercus alba</i>	2-4
Burr Oak	<i>Quercus macrocarpa</i>	2-4
Chinquapin Oak	<i>Quercus muhlenbergii</i>	2,4
Red Oak	<i>Quercus rubra</i>	2-4
Black Oak	<i>Quercus velutina</i>	3-4
Small Flowered Buttercup	<i>Ranunculus abortivus</i>	2-3
Bristly Buttercup	<i>Ranunculus hispidus</i>	2-3
Hooked Buttercup	<i>Ranunculus recurvatus</i>	2-3
Marsh Buttercup	<i>Ranunculus septentoralis</i>	2-3
Drooping Coneflower	<i>Ratibida pinnata</i>	4-5
Fragrant Sumac	<i>Rhus aromatica</i>	4-5
Smooth Sumac	<i>Rhus glabra</i>	3-4
Common Gooseberry	<i>Ribes missouriensis</i>	1-3
Black Locust (I)	<i>Robinia pseudoacacia</i>	1-5
Sunshine Rose	<i>Rosa arkansana</i>	4-5
Pasture Rose	<i>Rosa carolina</i>	4-5
Multiflora Rose (I)	<i>Rosa multiflora</i>	1-5
Sow-teat Bramble	<i>Rubus allegheniensis</i>	2-4
Arching Dewberry	<i>Rubus enslenii (?)</i>	2-4

Blackberry	<i>Rubus frondosus</i>	2-4
Black Raspberry	<i>Rubus occidentalis</i>	2-4
Black Eyed Susan	<i>Rudbeckia hirta</i>	4-5
Wild Petunia	<i>Ruellia humilis</i>	4-5
Elderberry	<i>Sambucus canadensis</i>	2-3
Bloodroot	<i>Sanguinaria canadensis</i>	2-3
Short Styled Snakeroot	<i>Sanicula canadensis</i>	2-4
Common Snakeroot	<i>Sanicula gregaria</i>	2-4
Sassafras	<i>Sassafras albidum</i>	3-4
Knawel (I)	<i>Scleranthus annuus</i>	2-4
Figwort	<i>Scrophularia marilandica</i>	2-3
Heart Leaved Scullcap	<i>Scutellaria ovata</i>	2-4
Small Skullcap	<i>Scutellaria parvula</i>	2-4
Prairie Ragwort	<i>Senecio plattensis</i>	4-5
Rosinweed	<i>Silphium integrifolium</i>	4-5
Stout Blue-eyed grass	<i>Sisyrinchium angustifolium</i>	4-5
Blue-eyed Grass	<i>Sisyrinchium campestre</i>	4-5
False Solomon's Seal	<i>Smilacina racemosa</i>	2-4
Upright Carrion Flower	<i>Smilax ecirrhata</i>	2-3
Common Greenbrier	<i>Smilax hispida</i>	2-3
Common Carrion Flower	<i>Smilax lasioneura</i>	2-3
Woodland Goldenrod	<i>Solidago caesia</i>	3-4
Zig Zag Goldenrod	<i>Solidago flexicaulis</i>	3-4
Missouri Goldenrod	<i>Solidago missouriensis</i>	4-5
Field Goldenrod	<i>Solidago nemoralis</i>	4-5
Stiff Goldenrod	<i>Solidago rigida</i>	4-5
Elm Leaved Goldenrod	<i>Solidago ulmifolia</i>	3-4
Spiny Sow Thistle (I)	<i>Sonchus asper</i>	2-4
Indian Grass	<i>Sorghastrum nutans</i>	4-5
Wedge Grass	<i>Sphenopholis obtusata</i>	3-5
Nodding Ladies' Tresses	<i>Spiranthes cernua</i>	4-5
Prairie Dropseed	<i>Sporobolis heterolepis</i>	5
American Bladdernut	<i>Staphylea trifolia</i>	2-3
Yellow Pimpernel	<i>Taenidia integerrima</i>	3-5
Germander	<i>Teucrium canadense</i>	3-4
Purplish meadow rue	<i>Thalictrum dasycarpum</i>	2-4
Broad Beech Fern	<i>Thelypteris hexagonoptera</i>	3-4
Basswood	<i>Tilia americana</i>	2-3
Poison Ivy	<i>Toxicodendron radicans</i>	1-5
Spiderwort	<i>Tradescantia ohiensis</i>	3-5
Oyster Plant (I)	<i>Tragopogon dubius</i>	2-4
Nodding Trillium	<i>Trillium glesioni</i>	2-3
Prairie Trillium	<i>Trillium recurvatum</i>	2-4
Snow Trillium	<i>Trillium nivale</i>	2
Venus' Looking-glass	<i>Triodanis perfoliata</i>	2-4

American Elm	<i>Ulmus americana</i>	2-3
Slippery Elm	<i>Ulmus rubra</i>	2-3
Common Nettle	<i>Urtica dioica</i>	1-3
Bellwort	<i>Uvularia grandiflora</i>	2-3
Common Mullein (I)	<i>Verbascum thapsus</i>	3-5
White Vervain	<i>Verbena urticifolia</i>	3-4
Yellow Ironweed	<i>Verbesina alternifolia</i>	3-4
Baldwin's Ironweed	<i>Vernonia baldwinii</i>	3-4
Tall Ironweed	<i>Vernonia gigantea</i>	3-5
Blackhaw	<i>Vibernum prunifolium</i>	3-4
Vibernum	<i>Vibernum rafinesquianum</i>	3-4
Vibernum	<i>Vibernum trilobum</i>	3-4
Blue Violet	<i>Viola obliqua</i>	4-5
Birdsfoot Violet	<i>Viola pedata</i>	4-5
Downy Yellow Violet	<i>Viola pubescens</i>	2-5
Downy Blue Violet	<i>Viola sororia</i>	2-5
Cleft Violet	<i>Viola triloba</i>	3-4
Riverbank Grape	<i>Vitis riparia</i>	1-4
Frost Grape	<i>Vitis vulpina</i>	1-4
Six-weeks Fescue	<i>Vulpina octoflora</i>	2-4
Prickly Ash	<i>Xanthoxylum americanum</i>	3-4
Golden alexander	<i>Zizia aurea</i>	4-5

Key to Plant List:

Status:

Abbreviations used in the first column to define special status of a species.

- ST- State Threatened Species
- SE- State Endangered Species
- WL- Species on local or state Watch List
- I- Introduced species

Distribution:

The following abbreviations are used in column 3 to define the habitats where the species is most likely to be found. The abbreviations are listed in a continuum from moist sites to dry sites. Plants with a range (e.g.2-4) can be found in habitats within a given range (e.g. 2,3 and 4). Plants with ranges separated by commas (e.g. 2,4) are bimodal in their habitat preference. Plants with a singular number (e.g. 4) are found almost exclusively within that habitat.

- 1- High Gradient Stream
- 2- Mesic Upland Forest
- 3- Dry-Mesic Upland Forest
- 4- Dry-Mesic Savanna
- 5- Glacial Drift Hill Prairie