



Department of Biological Sciences

600 Lincoln Avenue  
Charleston, Illinois 61920-3099

Office: 217-581-3126  
Fax: 217-581-7141

August 21, 2006

Ms. Diane Tecic  
Illinois Department of Natural Resources  
4521 Alton Commerce Parkway  
Alton, IL 62002

RE: Wildlife Preservation Fund Grant #06-010W  
Workshops for Illinois Nursery Industry to Promote Use of Native Plants in Landscaping

Dear Ms. Tecic:

We have enclosed a copy of the published press releases and our final report for the Wildlife Preservation Fund Grant #06-0101W. This report includes: 1) workshop attendance summary, and 2) a binder containing both hard copies and electronic copies of materials that were developed for distribution at workshops. In addition to the six workshops offered to members of the Illinois Nursery Industry (25 people attended), two workshops were offered to gardeners (32 people attended). The Payment Request Certification Form will be forwarded separately.

At these workshops, attendees provided ideas for additional information that would be useful regarding use of native plants in landscaping. Ideas that arose at several workshops regarding a need for more information included:

- 1) propagation techniques for native plants including hands-on workshops,
- 2) research about maintenance and how to overwinter native plants,
- 3) economics studies to document the cost effectiveness of using native plants,
- 4) development of promotional materials for nurseries to promote native plants (i.e. posters, signage, labels),
- 5) education to remove the negative perception that native plants are weeds,
- 6) outreach including more workshops on native plants offered at conventions/conferences attended by the Illinois Nursery Industry.

RECEIVED  
SEP 29 2006  
FEDERAL AID

We look forward to working on future projects in conjunction with the Illinois Department of Natural Resources to address some of the ideas generated in these workshops. Thank you for supporting this project.

Sincerely,

Janice M. Coons      Nancy E. Coutant  
Professor of Botany    Instructor of Botany

cc: Bob Chesnut  
Enclosures (3)

## WORKSHOP ATTENDANCE SUMMARY

Date	Location	#Invited	Nursery	Nature Center	Other	TOTAL
12/14/05	Charleston	16	5	0	2	7
02/10/06	Bloomington/ Normal	21	2	3	0	5
02/17/06	Decatur	18	1	0	0	1
02/24/06	Champaign/ Urbana	17	5	0	0	5
03/10/06	Peoria	12	2	0	1 (IDOT)	3
03/13/06	Springfield	#	3	1	0	4
					<b>TOTAL</b>	<b>25</b>
*03/07/06	Coles County Master Gardeners					28
*04/30/06	Allerton Park					4

#Unsure of the number because the invitations were sent by the Nature Center at Lincoln Memorial Garden

\*Workshop For Gardeners

## **Increase Your Sales with Native Plants Workshop for Retail Plant Nurseries**

Monday, March 13, 2006

1:30-3:30 pm

Lincoln Memorial Garden and Nature Center, Springfield, IL

This free workshop will offer information for retail plant nurseries to learn more about opportunities available by offering native plants for use in landscaping to their customers. It is presented by faculty in the Biological Sciences Department of Eastern Illinois University. This workshop will provide information about:

- ✓ Expanding your market niche with native plants
- ✓ Native plants already used by retail nurseries
- ✓ Advantages of using native plants
- ✓ Native plant alternatives to invasive plants
- ✓ Horticultural traits of native plants
- ✓ Wholesale sources of native plants (including catalogs)
- ✓ Packet of information for reference after workshop

### ***Faculty Offering Workshop***

Janice Coons  
[jcoons@eiu.edu](mailto:jcoons@eiu.edu)  
217-581-6243

Nancy Coutant  
[necoutant@eiu.edu](mailto:necoutant@eiu.edu)  
217-581-6609

Biological Sciences Department  
Eastern Illinois University  
Charleston, IL 61920

[www.eiu.edu/~n\\_plants](http://www.eiu.edu/~n_plants)  
FAX: 217-581-7141

### **SUPPORTED BY:**

Lincoln Memorial Garden and Nature Center—  
Complimentary use of facilities

Illinois Wildlife Preservation Fund (Illinois Department of Natural  
Resources)—financial support via a grant

Angela Smith (Sugar Grove Nature Center)—  
Coordination of facilities

## Increase Your Sales with Native Plants

Janice M. Coons  
Nancy E. Coutant  
Biological Sciences Department  
Eastern Illinois University



---

---

---

---

---

---

---

---

### Overview of Topics

- Important factors to retail nurseries
- Expand market niches with native plants
- Current use of native plants by retail nurseries
- Advantages of using native plants
- Native species as alternatives to Illinois Exotic Weeds
- Horticultural traits of native plants
- Wholesale sources of native plants

---

---

---

---

---

---

---

---

### Important Factors to Retail Nurseries

- Profits



---

---

---

---

---

---

---

---

**Important Factors  
to Retail Nurseries**

- Profits
- Satisfied Customers

---

---

---

---

---

---

---

**Important Factors  
to Retail Nurseries**

- Profits
- Satisfied Customers
- Environmental responsibility

---

---

---

---

---

---

---

**Native vs. Non-native**

- Native—  
Plants present in region prior  
to European settlement
  
- Non-native/Exotic/Alien/Introduced—  
Plants brought to region by humans  
(deliberate or accident)

---

---

---

---

---

---

---

**Expand Market Niches  
with Native Plants**

- “The use of natives in commercial, public, and residential landscapes is among the fastest growing areas in the Illinois Green Industry. The demand for these native plants are increasing at a record pace....”

Dave Bender, Executive Director  
Illinois Nurserymen’s Association  
C-FAR Connection, Fall 2005

---

---

---

---

---

---

---

---

**Expand Market Niches  
with Native Plants**

- Interest at the National Level

---

---

---

---

---

---

---

---

**Interest National Level  
Federal Government**

- 1990 Mandate by Congress
- 1994 Clinton Administration – Executive Memorandum
- Bush Administration – “New American Garden Style”
- USEPA – “Green Landscaping with Native Plants”
- USDA – Conservation Reserve Program
- USDOT – “Operation Wildflower” with the Garden Clubs of America
- Midewin – 1<sup>st</sup> National Tallgrass Prairie

---

---

---

---

---

---

---

---

**Interest National Level  
National Organizations**

- National Wildlife Federation – “Backyard Wildlife Habitat Program”; “American Beauties”
- Audubon Society – “Bird and Butterfly Sanctuary Program”
- The Nature Conservancy
- The Lady Bird Johnson Wildflower Research Center
- National Gardening Association

---

---

---

---

---

---

---

---

**Expand Market Niches  
with Native Plants**

- Interest at the National Level
- Interest at the State Level

---

---

---

---

---

---

---

---

**Interest in Illinois  
Government Programs**

- Illinois Department of Transportation – “Corridors for Tomorrow”
- First Lady’s Wildflower Program – “State Beautification Initiative”; IDOT-Wildflowers for Illinois Gateways and Wildflowers for Communities
- State Capitol Building’s Gardens
- Northeastern Illinois Planning Commission (NIPC); Natural Landscaping for Public Officials: A Source Book
- University of Illinois Extension Service Program – “Easy Care Native Plants”
- Dr. Coons’ CFAR Project with Master Gardeners and Native Plants
- Native Plant Display Gardens at the State Fairgrounds in Springfield

---

---

---

---

---

---

---

---



**Interest in Illinois  
Businesses; Corporations; Schools**

- Fermilab in Batavia
- Sears Corporate Headquarters, Hoffman Estates
- McDonald's Corporate Headquarters, Oak Brook
- Olympia Fields Country Club, Olympia Fields
- Wheaton-Warrenville South High School, Wheaton
- Eastern Illinois University Native Plant Gardens, Charleston

---

---

---

---

---

---

---

---

**Interest in Illinois  
Public Gardens**

- Chicago Botanic Gardens
- Morton Arboretum
- Chicago Park District
- Urbana Park District

---

---

---

---

---

---

---

---

**Interest in Illinois  
Cities and Communities**

- Hoffman Estates
- Long Grove
- Prairie Crossings in Grayslake

---

---

---

---

---

---

---

---

**Interest Illinois  
Organizations**

- The Chicago Wilderness Society
- The Illinois Native Plant Society
- The “Wild Ones” Organization
- Nature Centers
- Grand Prairie Friends—Prairie Grove  
Volunteers (Annual Plant Sale)

---

---

---

---

---

---

---

---

**Expand Market Niches  
with Native Plants**

- Interest at the National Level
- Interest at the State Level
- Interest in Surrounding States

---

---

---

---

---

---

---

---

**Interest In Surrounding States**

- Indiana – Prairie Reconstruction Project; Native Plant  
Society
- Missouri - “Grow Wild Program”; Native Plant Society
- Missouri Botanical Garden-Kemper Center for Home  
Landscaping
- Wisconsin – “Wild Ones” Organization; Lorrie Otto
- Iowa – The Iowa Prairie Network Services
- Madison, Wisconsin-1<sup>st</sup> Major City in the US to Modify  
Its “Weed Laws” to Allow for Natural Landscaping;  
Aldo Leopold

---

---

---

---

---

---

---

---

### Misconception

- Native Plants are simply weeds that have no attractive or desirable horticultural traits
- The Retail Nursery Industry currently sells several native plants or plants that were developed from natives
- Not promoting the idea of only selling natives

---

---

---

---

---

---

---

---

### Current Use of Native Plants by Retail Nurseries

- See handouts in folder under the “popular” tab

---

---

---

---

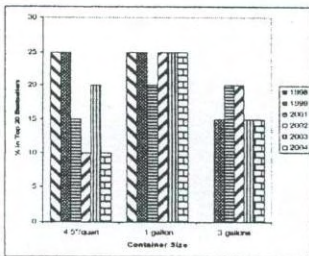
---

---

---

---

### % Natives in Top 20 Bestseller Perennials



Laurie McGhee, Hoffie Nursery, Inc., Union, IL

---

---

---

---

---

---

---

---

**Top 9 Native Plants  
Used in Home Gardens--Sun**

- Smooth beard-tongue (*Penstemon digitalis*)
- Tickseed coreopsis (*Coreopsis lanceolata*)
- New England aster (*Aster novae-angliae*)
- Grayhead coneflower (*Ratibida pinnata*)
- Missouri primrose (*Oenothera macrocarpa*)
- Purple prairie clover (*Dalea purpurea*)
- Missouri coneflower (*Rudbeckia missouriensis*)
- Butterfly weed (*Asclepias tuberosa*)
- Button snakeroot (*Liatris pycnostachya*)

Tim Smith, 1997, Wildflower Favorites,  
Missouri Department of Conservation

---

---

---

---

---

---

---

---

---

---

**Top 3 Native Plants  
Used in Home Gardens—Shade**

- Cardinal flower (*Lobelia cardinalis*)
- Purple coneflower (*Echinacea purpurea*)
- Columbine (*Aquilegia canadensis*)

Tim Smith, 1997, Wildflower Favorites,  
Missouri Department of Conservation

---

---

---

---

---

---

---

---

---

---

**Perennials of the Year  
that are Native Species**

- 1999 *Rudbeckia fulgida* var. *sullivantii*  
‘Goldsturm’
- 1998 *Echinacea purpurea*  
‘Magnus’
- 1996 *Penstemon digitalis*  
‘Husker Red’

Perennial Plant of the Year Program  
Perennial Plant Association, Hilliard, Ohio

---

---

---

---

---

---

---

---

---

---

### **Promoting Natives**

- Have a native plant garden at the nursery
- Mention natives in advertising material
- Have stakes or stickers in/on the containers of native plants that identify them as natives
- Have a separate area for native plants
- Have a list of natives that your nursery carries available for customers
- Post pictures of native plants in the sales area
- Offer a workshop for customers on gardening with native plants

---

---

---

---

---

---

---

---

### **BREAK TIME**

- Help yourself to the refreshments
- Signup for the door prize
- Pickup catalogs

---

---

---

---

---

---

---

---

### **Advantages of Using Native Plants**

- Opportunity to provide another product niche

---

---

---

---

---

---

---

---

## Advantages of Using Native Plants

- Opportunity to provide another product niche
- Low maintenance  
(save time and money)

---

---

---

---

---

---

---

---

## Low Maintenance

- Reduce fertilizer
- Reduce insects
- Reduce diseases
- Reduce irrigation



Japanese beetle

<http://entweb.clemson.edu/>



Powdery mildew

<http://plantclinic.comell.edu>

---

---

---

---

---

---

---

---

## Threats to The Green Industry (Product and Service Businesses)

- Threats identified as important or extremely important
- Water availability—42% of responses
- Chemical restrictions—41% of responses
- Increasing energy costs—76% of responses

The Illinois Green Industry—Its 2003 Economic Impact, Growth, and Characteristics, NRES, University of Illinois, Urbana, IL

---

---

---

---

---

---

---

---

## Advantages of Using Native Plants

- Opportunity to provide another product niche
- Low maintenance
- Environmentally friendly

---

---

---

---

---

---

---

## Environmentally Friendly

- Less chance to pollute soil and water (fewer fertilizers and pesticides)
- Attractive to native wildlife (such as butterflies, birds)
- Less apt to become invasive



Ruby-throated hummingbird



Bumblebee



Pumpkin spider

<http://hummingbirdwebsite.com/gallery/index.htm>

---

---

---

---

---

---

---

## Invasive Plant Species

- Plant species (usually exotic) that establish in existing plant communities where they create threats to native communities
- Outcompete native vegetation/become dominant
- 50% of invasive plants brought to U.S. as garden plants
- Spend \$3 billion/year to control non-native weeds in U.S.
- Occupy 100 million acres (4600 new acres/day)
- 80 plant species cause most damage

---

---

---

---

---

---

---

### Examples of Invasive Plants

Trees	Shrubs	Vines	Herbaceous
Autumn olive <i>Elaeagnus umbellata</i>	Common privet <i>Ligustrum vulgare</i>	Chinese yam <i>Dioscorea batatas</i>	Canada thistle <i>Cirsium arvense</i>
Black locust <i>Robinia pseudoacacia</i>	Japanese barberry <i>Berberis thunbergii</i>	Japanese honeysuckle <i>Lonicera japonica</i> *	Garlic mustard <i>Alliaria petiolata</i>
Buckthorn species <i>Rhamnus sp.</i> *	Multi-flora rose <i>Rosa multiflora</i> *	Kudzu <i>Pueraria lobata</i> *	Purple loosestrife* <i>Lythrum salicaria</i>
White mulberry <i>Morus alba</i>	Winged euonymus <i>Euonymus alatus</i>	Porcelain berry <i>Amelopsis brevipedunculata</i>	Teasel <i>Dipsacus sp.</i>

Abbreviated List: Nearly 300 invasive plants in U.S.  
\*Plants included in Illinois Exotic Weed Act

---

---

---

---

---

---

---

---

---

---

---

---

### Laws Against Sales of Invasive Species in Other States

- Connecticut—fine \$100 for selling (Dame’s rocket, Shrub honeysuckle, etc.)
- Massachusetts—requires retailers to phase out sales of 12 invasive species often sold as garden plants (Forget-me-not, Japanese barberry, Burning bush, etc.)

The Wall Street Journal, August 19, 2005

---

---

---

---

---

---

---

---

---

---

---

---

### Illinois Exotic Weed Act

- “It shall be unlawful for any person, corporation, political subdivision, agency or department of the State to buy, sell, offer for sale, distribute or plant seeds, plants or plant parts of exotic weeds without a permit issued by the IDNR.”

Illinois Exotic Weed Act, Section 10/4

---

---

---

---

---

---

---

---

---

---

---

---



## Illinois Exotic Weed Act

1987 Exotic Weeds Include:

Japanese honeysuckle (*Lonicera japonica*)

Multiflora rose (*Rosa multiflora*)

Purple loosestrife (*Lythrum salicaria*)



Japanese honeysuckle

Multiflora rose

Purple loosestrife

Source: [www.chicagobotanic.org/research/conservation/invasive\\_chicago.html](http://www.chicagobotanic.org/research/conservation/invasive_chicago.html)

---

---

---

---

---

---

---

---

## Illinois Exotic Weed Act

2003 Exotic Weeds Include:

Saw-toothed buckthorn (*Rhamnus arguta*)

Common buckthorn (*Rhamnus cathartica*)

Dahurian buckthorn (*Rhamnus davurica*)

Glossy buckthorn (*Rhamnus frangula*)

Japanese buckthorn (*Rhamnus japonica*)

Chinese buckthorn (*Rhamnus utilis*)

Kudzu (*Pueraria lobata*)



Common buckthorn

Kudzu

Source: [www.chicagobotanic.org/research/conservation/invasive\\_chicago.html](http://www.chicagobotanic.org/research/conservation/invasive_chicago.html)

---

---

---

---

---

---

---

---

## Native Species as Alternatives to Illinois Exotic Weeds

- |                        |                      |
|------------------------|----------------------|
| ■ Japanese honeysuckle | ■ Red honeysuckle    |
|                        | ■ Yellow honeysuckle |
| ■ Multiflora rose      | ■ Pasture rose       |
|                        | ■ Prairie rose       |
| ■ Purple loosestrife   | ■ Blazing star       |
|                        | ■ Obedient plant     |
| ■ Buckthorn sp.        | ■ Shadbush           |
|                        | ■ Dogwood            |
| ■ Kudzu                | ■ Virginia creeper   |
|                        | ■ Virgin's bower     |

---

---

---

---

---

---

---

---

## Horticultural Traits of Native Plants

- Various Habits

---

---

---

---

---

---

---

---

## Native Plants--Tree Habit



Bur oak (*Quercus macrocarpa*)



White pine (*Pinus strobus*)

Wild plum  
(*Prunus americana*)



---

---

---

---

---

---

---

---

## Native Plants--Shrub Habit



Leadplant (*Amorpha canescens*)



Wild hydrangea (*Hydrangea arborescens*)

---

---

---

---

---

---

---

---

### Native Plants--Vine Habit



Virginia creeper (*Parthenocissus quinquefolia*)



Bittersweet (*Celastrus scandens*)

---

---

---

---

---

---

---

---

### Native Plants— Herbaceous Perennial Habit



Wild ginger  
(*Asarum canadense*)



Wild petunia  
(*Ruellia humilis*)

---

---

---

---

---

---

---

---

### Horticultural Traits of Native Plants

- Various habits
- Various environmental needs

---

---

---

---

---

---

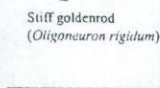
---

---

**Natives for Sunny Dry Gardens  
(from prairies)**



Bradbury's beebalm  
(*Monarda bradburiana*)



Stiff goldenrod  
(*Oligoneuron rigidum*)



Rattlesnake master  
(*Eryngium yuccifolium*)




---

---

---

---

---

---

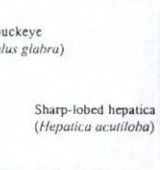
---

---

**Natives for Shady Moist Gardens  
(from woodlands)**



Ohio buckeye  
(*Aesculus glabra*)



Sharp-lobed hepatica  
(*Hepatica acutiloba*)



Dutchman's  
breeches  
(*Dicentra  
cucullaria*)

Bird's-foot  
Violet  
(*Viola  
pedata*)




---

---

---

---

---

---

---

---

**Natives for Pond Gardens  
(from wetlands)**



Cardinal flower  
(*Lobelia  
cardinalis*)



Swamp  
milkweed  
(*Asclepias  
incarnata*)



Water lily  
(*Nymphaea* sp.)



Pickerelweed  
(*Pontederia  
cordata*)




---

---

---

---

---

---

---

---

### Horticultural Traits of Native Plants

- Various habits
- Various environmental needs
- Various seasons

---

---

---

---

---

---

---

---

### Native Plants—Spring Appeal

Purple trillium  
(*Trillium recurvatum*)



Redbud (*Cercis canadensis*)

Jack-in-the-pulpit  
(*Arisaema triphyllum*)



---

---

---

---

---

---

---

---

### Native Plants—Summer Appeal

Bradbury's  
Beebalm  
(*Monarda  
bradburiana*)



New Jersey tea  
(*Ceanothus  
americanus*)



Maple-leaved arrowwood  
(*Viburnum acerifolium*)



Purple coneflower (*Echinacea purpurea*)

---

---

---

---

---

---

---

---

## Native Plants—Fall Appeal



---

---

---

---

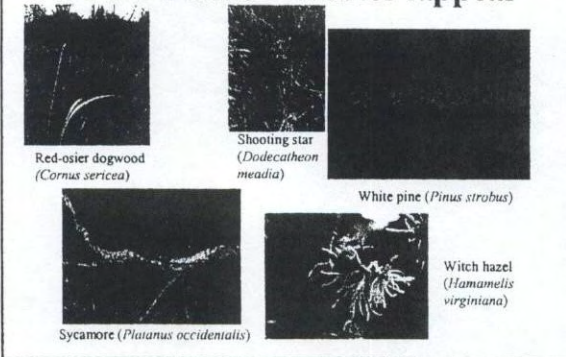
---

---

---

---

## Native Plants—Winter Appeal



---

---

---

---

---

---

---

---

## Horticultural Traits of Native Plants

- Various habits
- Various environmental needs
- Various seasons
- Attractive to wildlife

---

---

---

---

---

---

---

---

## Native Plants—Attract Wildlife



Swamp milkweed (*Asclepias incarnata*)  
with Bumblebee



Butterfly milkweed  
(*Asclepias tuberosa*)  
with Butterfly

---

---

---

---

---

---

---

---

## Horticultural Traits of Native Plants

- Various habits
- Various environmental needs
- Various seasons
- Attractive to wildlife
- Attractive in garden situations

---

---

---

---

---

---

---

---

## Native Plant Garden



---

---

---

---

---

---

---

---

**Native Plant Garden**



---

---

---

---

---

---

---

---

**Native Plant Garden**



---

---

---

---

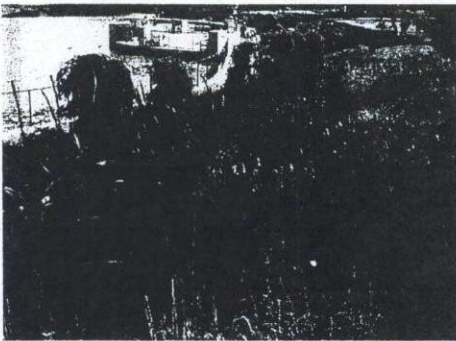
---

---

---

---

**Native Plant Garden**



---

---

---

---

---

---

---

---



**Native Plant Garden**



---

---

---

---

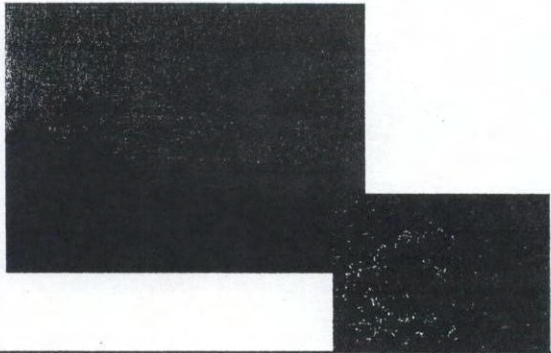
---

---

---

---

**Native Plant Garden**



---

---

---

---

---

---

---

---

**Wholesale Sources of Native Plants**

- Database in binder
- Wholesale catalogs from some nurseries

---

---

---

---

---

---

---

---

## Acknowledgments

- Illinois Department of Natural Resources  
Wildlife Preservation Fund
- Jim Mathias
- Lincoln Memorial Garden and Nature Center
- Angela Smith, Director  
Sugar Grove Nature Center
- Eastern Illinois University,  
Biological Sciences Department
- Kelsay Shaw  
Possibility Place Nursery
- Marissa Jernegan, Angela King, Sarah  
Westfall  
Eastern Illinois University



---

---

---

---

---

---

---

---

## Thanks for Coming

- Please complete feedback form
- Any questions?



---

---

---

---

---

---

---

---

Some of the Native Plants that are Currently Sold by Retail Nurseries

**PRAIRIE**

Scientific Name	Cultivar(s)	Common Name
<i>Asclepias tuberosa</i>		Butterfly Milkweed
<i>Aster novae-angliae</i>	'Purple Dome'	New England Aster
<i>Coreopsis lanceolata</i> , <i>C. grandiflora</i> and <i>C. verticillata</i>	'Ruby Throat' and 'Grandiflora'	Coreopsis or Tickseed
<i>Echinacea purpurea</i>	'Magnus'; 'Sunrise'; 'Sunset'	Purple Coneflower
<i>Gaillardia x grandiflora</i>	'Goblin'	Blanket Flower
<i>Gaura biennis</i>	'Pink Lady'	Butterfly Weed
<i>Glandularia canadensis</i>		Rose Verbena
<i>Helianthus annuus</i> and <i>H. maximilianii</i>	Many Popular Cultivars	Common Sunflower Maximilian Sunflower
<i>Heliopsis helianthoides</i>	'Summer Sun'	False Sunflower or Ox-Eye Sunflower
<i>Liatris pycnostachya</i> and <i>L. spicata</i>	'Kobold' and 'Gnome'	Blazing Star or Gay Feather
<i>Monarda fistulosa</i> and <i>M. didyma</i>		Wild Bergamont or Bee Balm
<i>Oenothera biennis</i>		Missouri Primrose
<i>Penstemon digitalis</i>	'Husker Red'	Beardstongue
<i>Physostegia virginiana</i>	'Vivid'	Obedient Plant or False Dragonhead
<i>Rudbeckia hirta</i> , <i>R. sullivantii</i> , <i>R. fulgida</i> , <i>R. grandiflora</i> and <i>R. laciniata</i>	Many Cultivars	Black-Eyed Susan, Gloriosa Daisy and Orange Coneflower
<i>Salvia lyrata</i> , and <i>S. azurea</i> var. <i>grandiflora</i>	'Purple Volcano' 'May Night'	Perennial Salvia or Sage
<i>Sporobolus heterolepis</i>		Dropseed
<i>Tradescantia ohiensis</i> and <i>T. virginiana</i>		Spiderwort

**WOODLAND**

<i>Adiantum pedatum</i>		Maidenhair Fern
<i>Aquilegia canadensis</i>		Columbine
<i>Arisaema triphyllum</i>		Jack-In-The-Pulpit
<i>Dicentra eximia</i> and <i>D. spectabilis</i>		Bleeding Heart
<i>Delphinium tricorne</i> & <i>D. virescens</i>		Prairie Larkspur, Larkspur

WOODLAND continued

*Geranium maculatum*  
*Lupinus perennis*  
*Mertensia virginica*  
*Myosotis scorpioides*  
*Polygonatum commutatum*  
*Tradescantia virginiana*  
*Trillium grandiflorum*

Wild Geranium  
Blue Lupine  
Virginia Bluebells  
Forget-Me-Not  
Solomon's Seal  
Spiderwort  
Large Flowered Trillium

**WETLANDS or WATER PLANTS**

*Lobelia cardinalis*  
*Nymphaea odorata* and  
*N. tuberosa*

'Ruby Slipper'

Cardinal Flower  
Water Lilies

**SHRUBS, VINES and GROUNDCOVERS**

*Callicarpa americana*  
*Campsis radicans*  
*Gaultheria procumbens*  
*Ilex verticillata*  
and *I. opaca*  
*Lonicera sempervirens*  
*Parthenocissus quinquefolia*

'Afterglow'; 'Winter Red'  
'Miss Helen'; 'Old Heavy Berry'  
'John Clayton'

Beautyberry  
Trumpet Vine  
Creeping Winterberry  
Holly

Trumpet Honeysuckle  
Virginia Creeper

*Viburnum dentatum*,  
and *V. trilobum*

'BlueMuffin'  
Compactum'; 'Hahs'; 'Redwing'

Arrowwood  
American Cranberry  
Bush or Highbush  
Cranberry

**GURNEY'S BEST SELLERS  
2005 FALL CATALOGUE**

Little Business Daylily  
Lily of the Valley  
**Orange Butterfly Plant**  
**Maximillian Sunflower**  
High-Traffic Grass Seed  
Valentine Rhubarb

**Two of the Six are Natives** – the Orange Butterfly Plant  
and the Maximillian Sunflower

(see the back of this page)

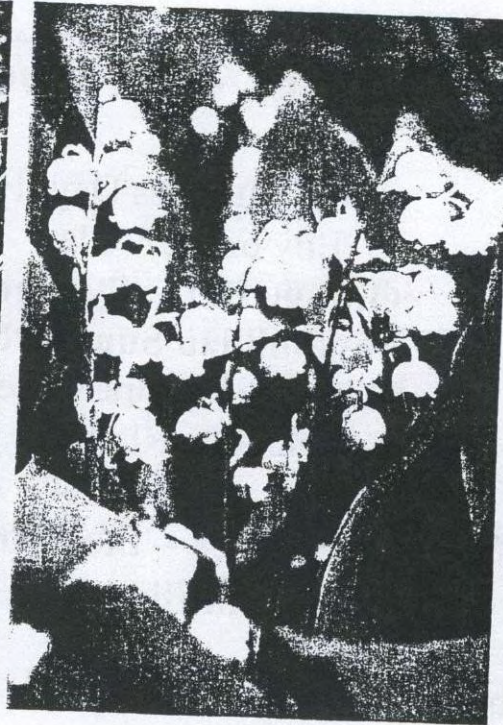
# Gurney's Best Sellers



**Little Business Daylily**  
The Stella de Oro of Reds

The premiere red! Flaming crimson blooms all summer long. Dependable and vigorous, plants grow to 17 inches tall. Bareroot. Zones 3-9.

09199      1 Offer      3 Or More  
7.95      7.35 ea

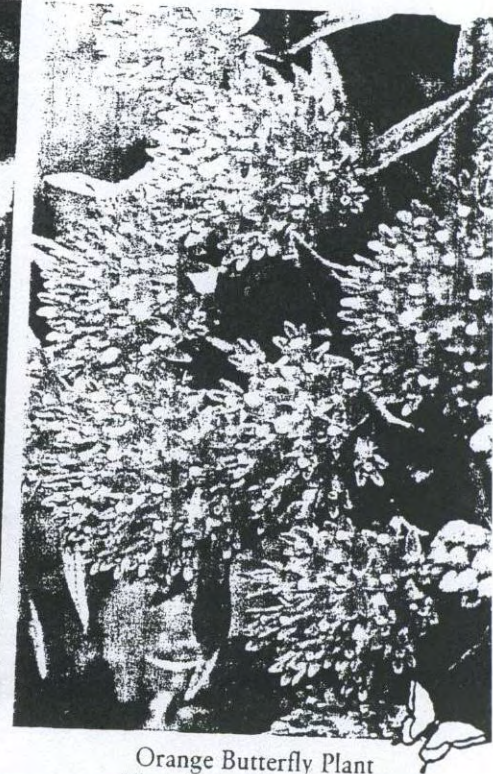


**Lily of the Valley**

**Fragrant Pick for Full to Partial Shade**

Forms a carpet of graceful, 8-inch leaves. In mid-spring, bursts into a sweet-smelling shower of tiny bell flowers. Covers 7 1/2 sq. feet. Bareroot. Zones 2-7. For each offer ordered, get 6 plants.

08993      1 Offer      2 Or More  
9.95      8.95 ea



**Orange Butterfly Plant**  
Like a Magnet for Butterflies

Bright orange flowers in early summer are followed by lance-shaped seed pods. Grows 24-36 inches high. Full sun. Extremely drought tolerant. Bareroot. Zones 4-8.

09052      1 Offer      3 Or More  
3.95      3.65 ea



**Maximillian Sunflower**

Birds Love It!

Stands poor soils and intense heat. Churns out large yellow flowers in mid to late summer. A show-stopping 5-10 feet tall. Full sun. Bareroot. Zones 3-9.

11016      1 Offer      3 Or More  
4.95      4.45 ea



**Garden Solutions High-Traffic Grass Seed**  
Fall Is the Best Time to Sow!

For a lush, beautiful lawn in high-traffic areas and on slopes. Premium blend has deep, vigorous roots and resilient blades that stand up to tough use. Stays out of flower beds; resists drought, disease and common lawn bugs! Apply 3 lbs. per 500 sq. ft. for new lawn. Zones 5-7. 5-lb. pkg.

69568      1 Offer      2-5 Offers      6 Or More  
11.95      10.75      9.70 ea



**Valentine Rhubarb**

The Tangy Taste Sensation

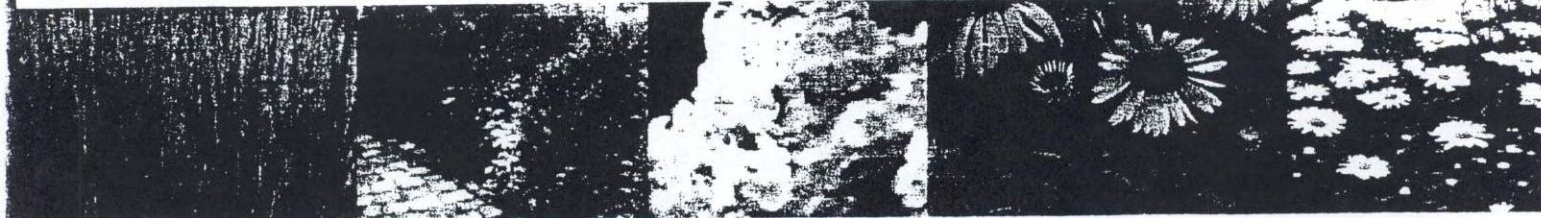
Canadians love rhubarb—and they gave this top marks for flavor. Perfect for Northern growers—hardy and quick to produce. Not available in NV, UT, WA.

13836      Size      1 Offer      2-3      4 Or More  
No. 1      6.95      6.50      6.25 ea



# Perennial Plant Association

[Home](#) [Education](#) [Membership](#) [Member Business Links](#) [Publications](#) [Perennial Plant of the Year](#) [Speakers Bureau](#) [Symposium](#)



## About PPA

[Press Releases](#)

[Industry Calendar](#)

[Internship Directory](#)

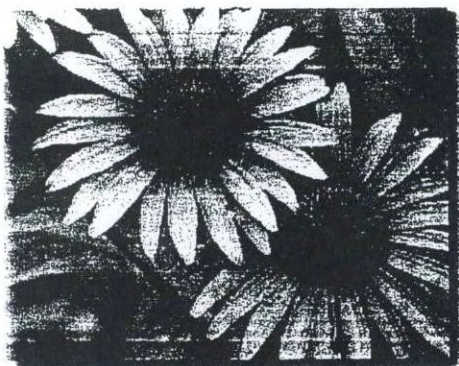
[Garden Guide](#)

*The Perennial Plant of the Year Program promotes the use of perennials. Four perennials are selected by the Perennial Plant of the Year Committee from an extensive list of nominations made earlier by PPA members. Each year members cast their vote for one of the four selected plants with the following attributes:*

- suitable for a wide range of climate types
- low maintenance
- easily propagated - easily comes true from seed or vegetative propagation
- exhibits multiple seasonal interest



[ppa@perennialplant.org](mailto:ppa@perennialplant.org)



## Perennial Plant of the Year Index:

2005 Helleborus xhybridus

2004 Athyrium niponicum 'Pictum'

2003 Leucanthemum 'Becky'

2002 Phlox 'David'

2001 Calamagrostis x acutiflora 'Karl Foerster'

2000 Scabiosa columbaria 'Butterfly Blue'

1999 Rudbeckia fulgida var. sullivantii 'Goldsturm'

1998 Echinacea purpurea 'Magnus'

1997 Salvia 'Mainacht' (May Night)

1996 Penstemon digitalis 'Husker Red'

1995 Perovskia atriplicifolia

1994 Astilbe 'Sprite'

1993 Veronica 'Sunny Border Blue'

1992 Coreopsis verticillata 'Moonbeam'

1991 Heuchera micrantha 'Palace Purple'

1990 Phlox stolonifera

Perennial Plant Association - 3383 Schirtzinger Rd. - Hilliard OH 43026 -

phone: 614-771-8431 - fax: 614-876-8208





# THE ILLINOIS EXOTIC WEED ACT AND THE SALE OF NON-NATIVE PLANTS IN ILLINOIS

By Ben Dolbeare  
Central Chapter  
Conservation Coordinator, IDNR

All wholesalers, nurseries and garden centers that sell or offer for sale or distribute exotic weeds in Illinois listed by the Exotic Weed Act are subject to being arrested for a Class B Misdemeanor with penalties of up to 6 months in jail and a fine of \$1500.00. All exotic weeds listed by the Act that are offered for sale by the nurseries and garden centers in Illinois are also subject to confiscation and destruction by the Illinois Department of Natural Resources (IDNR). The IDNR will be actively enforcing the provisions of the Act and court actions will be brought against those who violate the requirement of the law.

## The Illinois Exotic Weed Act: Its meaning and ramifications

Exotic weeds are plants not native to North America, which spread vegetatively or by seed and naturalize in the environment. Invasive exotic species degrade natural communities, reduce the value of fish and wildlife habitat, and threaten endangered or threatened species. A growing body of research demonstrates that invasive exotic species are the second largest - and probably fastest growing - threat to biodiversity locally and nationally. For example, of 1880 species classified as imperiled in the United States, invasive exotics played a major role in the listing of 49%. This was second only to habitat loss and was significantly higher than pollution, overexploitation and disease combined. Invasive exotic species also cause changes in ecosystem structure and function and increase degradation of unique regional biota.

The State of Illinois responded to this problem by passing the Illinois Exotic Weed Act in 1987. The Illinois Exotic Weed Act makes it unlawful to buy, sell, offer for sale, distribute, or plant seeds, plants or plant parts of exotic weeds in Illinois. Section 10/4 of the Act states the following: **It shall be unlawful for any person, corporation, political subdivision, agency or department of the State to buy, sell, offer for sale, distribute or plant seeds, plants or plant parts of exotic weeds without a permit issued by the IDNR.**

The 1987 Act designated three species as exotic weeds in Illinois, thereby restricting the sale of Japanese honeysuckle (*Lonicera japonica*), multiflora rose (*Rosa multiflora*), and purple loosestrife (*Lythrum salicaria*). The Illinois Exotic Weed Act was amended in 2003 by adding Common buckthorn (*Rhamnus cathartica*), dahurian buckthorn (*Rhamnus davurica*), Japanese buckthorn (*Rhamnus japonica*), Chinese buckthorn (*Rhamnus utilis*), and kudzu (*Pueraria lobata*) to the list of designated exotic weeds.

Contrary to what some believe, there are no varieties, subspecies, or cultivars of any of the listed exotic species that can be legally sold in Illinois. For example, various forms of purple loosestrife are sometimes referred to as purple lythrum, lythrum, rainbowweed, salicaria and spiked and spiked loosestrife to name a few. *Lythrum salicaria* var. *gracilior*, *L. salicaria* var. *tomentosum* and *L. salicaria* var. *vulgare* are a sampling of the subspecies you might encounter. All of these falls under the plant name of purple loosestrife in regards to the Illinois Exotic Weed Act, which makes it unlawful for any person to buy, sell, offer for sale, or distribute any of them.

The only way a variety, subspecies or cultivar of any listed species can be legally bought, sold, distributed, or offered for sale as seeds, plants or plant parts, is with a permit issued by the IDNR. By law, such permits shall be issued only for experiments into controlling and eradicating exotic weeds or for research to demonstrate that a variety of a species listed in this Act is not an exotic weed as defined in Section 2 of the Act. Commercial propagation of exotic weeds for sale outside Illinois, certified under the Insect Pest and Plant Disease Act (505 ILCS 90/1 et seq.) is exempted from this provision of this section of the Act. Section 3 of the Illinois Exotic Weed Act allows the Director of the IDNR to exempt varieties of the species listed above. Exemptions are available to any buyer or seller who can demonstrate through published or current research that the varieties in question are not exotic weed(s) as defined in the first paragraph of this article. The information supporting the exemption can be submitted to the Director of the IDNR by petition. Violators of this Act can be charged with a Class B misdemeanor. Each day shall be considered a separate offense when the violation is a continuing offense. Exotic plants offered for sale in Illinois except as provided above are subject to confiscation and destruction by agents of the IDNR.

Again, the list is as follows:

### The Illinois Exotic Weed Act

The Illinois Exotic Weed Act was last amended in 2003; therefore, the following list of plants is illegal to sell in Illinois:

Japanese Honeysuckle	<i>Lonicera japonica</i>
Multiflora Rose	<i>Rosa multiflora</i>
Purple Loosestrife	<i>Lythrum salicaria</i>
Common Buckthorn	<i>Rhamnus cathartica</i>
Glossy Buckthorn	<i>Rhamnus frangula</i>
Saw-toothed Buckthorn	<i>Rhamnus arguta</i>
Dahurian Buckthorn	<i>Rhamnus davurica</i>
Japanese Buckthorn	<i>Rhamnus japonica</i>
Chinese Buckthorn	<i>Rhamnus utilis</i>
Kudzu	<i>Pueraria lobata</i>

INVASIVE PLANT SPECIES ON THIS LIST WERE ON ONE OR MORE OF FOLLOWING LISTS:

- Chicago Botanic Garden--Invasive Plants in the Chicago Region
- American Lands Alliance/Faith Campbell--Worst invasive plant species in the continuous United States, for Illinois 1999
- Illinois Department of Natural Resources, 2005
- Illinois Exotic Weed Act
- Illinois Natural History Survey--Early Detection Rapid Response
- Indiana Native Plant and Wildflower Society--  
40 Worst Weeds of Indiana, 2000
- Illinois Native Plant Society
- Illinois Noxious Weeds List
- Midewin National Tallgrass Prairie--List of Invasive Species  
Vegetation Management Guideline by the Illinois Natural  
History Survey

PAINT=Plants Available in Nursery Trade

BLANKS=Data not yet found

12/12/2005

# INVASIVE PLANT SPECIES--COMPILED FROM VARIOUS LISTS

genus species	common name	PAINT	protocol for control	Why introduced?	problem it causes
<i>Acer ginnala</i>	Amtur maple	Yes			
<i>Acer platanoides</i>	Norway maple	Yes	physical	1762 as ornamental shade tree	invades woodlands
<i>Aegopodium podagraria</i>	Goutweed, Bishop's weed	yes			
<i>Agropyron repens</i>	Quack grass	Yes	burning, chemical		very aggressive and forms large patches
<i>Ailanthus altissima</i>	Tree-of-heaven	Yes	physical, chemical	1780's as an ornamental tree	develops thickets and displaces vegetation
<i>Albizia julibrissin</i>	Mimosa	no			
<i>Alliaria petiolata</i>	Garlic mustard	no	pulling, cutting, burning	brought to US for cooking and medicine	overtakes forests and disturbed habitats
<i>Alnus glutinosa</i>	European or Black alder	Yes	chemical	ornamental tree	
<i>Alternanthera philoxeroides</i>	Alligatorweed	Yes			
<i>Ambrosia artemisiifolia</i>	Common ragweed	no	physical, chemical		
<i>Ambrosia trifida</i>	Giant ragweed	no	physical, chemical		
<i>Ampelopsis brevipedunculata</i>	Porcelain berry	Yes	physical, chemical		shades out native vegetation
<i>Arctium minus</i>	Common burdock	Yes	physical, chemical		
<i>Berberis thunbergii</i>	Japanese barberry	Yes	physical, chemical	1800's cultivated in United States	shades out under story species
<i>Berberis vulgaris</i>	European barberry	Yes			
<i>Bromus inermis</i>	Smooth brome grass, Austrian brome	Yes	burning, chemical		
<i>Bulbopus umbellatus</i>	Flowering rush	Yes	physical	ornamental plant, often sold for water gardens	
<i>Cannabis sativa</i>	Marijuana	no			
<i>Carduus nutans</i>	Nodding musk thistle	Yes			
<i>Celastrus orbiculatus</i>	Oriental or round-leaved bittersweet	Yes		brought as an ornamental	climbs on trees and shrubs

<i>Centaurea maculosa</i>	Spotted knapweed, European star thistle	Yes physical, chemical, insect	1890 as contaminant in alfalfa or hay seed early 18th century as contaminant of crop seed	has toxin that hinders/prevents growth of species
<i>Cirsium arvense</i>	Canada thistle Marsh plume thistle, Swamp thistle	Yes no		troublesome weed
<i>Cirsium vulgare</i>	Bull thistle	Yes	introduced as a seed contaminant	aggressive weed
<i>Conium maculatum</i>	Poison hemlock	Yes		
<i>Coronilla varia</i>	Crown vetch, trailing crown vetch	Yes		
<i>Coloneaster multiflorus</i>	Many-flowered coloneaster	Yes		
<i>Daucus carota</i>	Queen Anne's lace, Wild carrot	Yes physical, chemical		
	Chinese yam, Hardy yam,			
<i>Dioscorea batatas</i>	Cinnamon vine, Air potato	Yes chemical	1800's as potential food source	forms mallike colonies that shade out vegetation
<i>Dipsacus</i>	Teasel	no		
<i>Dipsacus laciniatus</i>	Cut-leaved teasel	Yes		
<i>Dipsacus sylvestris</i>	Common teasel	no		
<i>Echinops sphaerocephalus</i>	Globe thistle Common or Brazilian	no		
<i>Egeria densa</i>	waterweed, elodea	Yes		
<i>Elaeagnus</i>	Autumn eleagnus	no		
<i>Elaeagnus angustifolia</i>	Russain olive	Yes chemical		
<i>Elaeagnus pungens</i>	Thorny olive	no		
<i>Elaeagnus umbellatus</i>		Yes		
<i>Elaeagnus umbellata</i>	Autumn olive	no	1940s planted to provide food shelter for wildlife	created thorny thicket

<i>Epilobium hirsutum</i>	Hairy willow weed/herb (Purple)	Yes physical, chemical	ornamental	dense monotypic stands crowd out native species
<i>Euonymus fortunei</i>	Wintercreeper or Climbing euonymous Burning bush, Winged wahoo, Winged euonymus European spindle tree Cypress spurge	Yes physical, chemical Yes physical, chemical Yes physical, chemical Yes Yes	1860's as ornamental shrub	replaces native shrubs
<i>Euphorbia esula</i>	Leafy spurge	no chemical, insect		outcompetes other vegetation, produces chemicals
<i>Festuca arundinacea</i> (=F. elatior)	Tall fescue	Yes burning, chemical	forage for livestock erosion control along streams	fungus that suppresses growth and animals sick
<i>Festuca pratense</i>	Meadow fescue	Yes		
<i>Festuca pratensis</i>	Fescue	no		
<i>Glechoma hederacea</i>	Ground ivy, Creeping Charlie	Yes		
<i>Gypophila</i>	Baby's breath	physical, chemical, no burning	brought as an ornamental	dense colonies shade out other species
<i>Hedera helix</i>	English ivy	no physical, chemical		
<i>Hemerocallis fulva</i>	Tawny daylily	Yes		
<i>Heracleum mantegazzianum</i>	Giant hogweed	no physical, chemical		
<i>Hesperis matronalis</i>	Dame's rocket	Yes physical, chemical		
<i>Hibiscus syriacus</i>	Rose-of-Sharon	no		
<i>Hippophae</i>	Common sea buckthorn	no		
<i>Hippophae rhamnoides</i>		Yes		
<i>Humulus japonicus</i>	Japanese hop	no physical, chemical	ornamental	
<i>Hydrilla verticillata</i>	Hydrilla	no		

<i>Hypericum perforatum</i>	Common St. Johns-wort	Yes burning, physical		
<i>Iris pseudacorus</i>	Yellow flag or Water-flag iris	Yes physical, chemical	sold for garden pools	
<i>Lespedeza bicolor</i>	Shrubby bushclover	no		
<i>Lespedeza cuneata/lespedeza sericea</i>	Chinese lespedeza, Sericea/Chinese bush clover	Yes physical, chemical	bank stabilization, soil improvement and forage	outcompetes vegetation
<i>Ligustrum obtusifolium</i>	Chinese privet	no		
<i>Ligustrum vulgare</i>	Border privet, Blunt-leaved privet	Yes		
<i>Linaria vulgaris</i>	Common privet	Yes		
<i>Lonicera</i>	Butter-and-eggs Bush honeysuckle	Yes physical, chemical	sold in wildflower mixes	
<i>Lonicera fragrantissima</i>	January jasmine	no		
<i>Lonicera japonica</i>	Japanese honeysuckle	physical, burning, Yes chemical	1806 in New York as a landscape plant	smothers small trees and shrubs
<i>Lonicera maackii</i>	Amur honeysuckle	Yes physical, chemical	1896 to North America	reduce plant diversity
<i>Lonicera morrowii</i>	Morrow's honeysuckle	Yes physical, chemical	1800s to United States	reduce plant diversity
<i>Lonicera tatarica</i>	Tatarian honeysuckle	Yes physical, chemical	1700s to United States	reduce plant diversity
<i>Lonicera x bella</i>	Bell's honeysuckle,	Yes		
<i>Lotus corniculatus</i>	Hybrid honeysuckle	Yes		
<i>Lysimachia nummularia</i>	Bird's-foot trefoil Moneywort, Creeping Jenny	Yes physical, burning		
<i>Lythrum salicaria</i>	Purple loosestrife	Yes physical, chemical	1800's through nursery trade	threatens rare or endangered species
<i>Malus (spp)</i>	Crabapples	Yes		
<i>Melilotus alba</i>	White sweet clover	Yes		

<i>Melilotus officinalis</i>	Yellow sweet clover	Yes
<i>Microstegium vimineum</i>	Japanese stilt, Eulalia grass, Camus, Notal grass, Japanese silvergrass, Chinese silvergrass, Pampas	no physical
<i>Miscanthus Miscanthus sacchariflorus</i>	Amur silver grass Zebra grass, Chinese silver grass Flame grass	Yes Yes no
<i>Miscanthus sinensis Miscanthus sinensis purpureus</i>	White mulberry Eurasian water milfoil	Yes chemical Yes
<i>Morus alba</i>	Bushy pondweed, Brittle naiad Watercress Yellow floating heart	no Yes physical Yes Yes
<i>Myriophyllum spicatum</i>	Princess tree, Royal paulownia Common perilla	no physical, chemical no
<i>Najas minor</i>	Reed canary grass	physical, chemical, Yes burning
<i>Nasturtium officinale</i>	Canary grass	no
<i>Nymphoides peltata</i>	Common reed	Yes
<i>Pastinaca sativa</i>	Canada bluegrass	Yes
<i>Paulownia tomentosa</i>		
<i>Penilla frutescens</i>		
<i>Phalaris arundinacea</i>		
<i>Phalaris canariensis</i>		
<i>Phragmites australis</i>		
<i>Poa compressa</i>		

to set up silkworm industry

used medicinally

1830's as an ornamental tree  
maintenance problems on roads

forage value  
smothers native wetland species

turf and forage



<i>Poa pratensis</i>	Kentucky bluegrass	Yes	turf and forage	outcompete native prairie grasses
<i>Polygonum cuspidatum</i>	Japanese knotweed, Japanese bamboo, Mexican bamboo Mile-a-minute weed, Asiatic tearthumb Sakhalian knotweed	Yes	ornamental	covers and kills shrubs and other vegetation
<i>Polygonum perfoliatum</i>		Yes		
<i>Polygonum sachalinense</i>		Yes		
<i>Populus alba</i>	White poplar	Yes	introduced as a landscape and street plant	drops twigs and limbs
<i>Populus tremuloides</i>	Quaking aspen	no		
<i>Portulaca oleracea</i>	Purslane	Yes		
<i>Potamogeton crispus</i>	Curlyleaf pondweed	no		shades out slower growing native plants
<i>Potentilla argentea</i>	Silvery cinquefoil	Yes		
<i>Prunus mahaleb</i>	Mahaleb cherry	Yes		
<i>Pueraria lobata</i> = <i>P. montana</i>	Kudzu	Yes	livestock forage crop	displaces native plants
<i>Pyrus calleryana</i>	Bradford pear, Korean pear	yes	control agricultural erosion	
<i>Quercus acutissima</i>	Sawtooth oak	no	ornamental tree	
<i>Rhamnus</i>	Buckthorns	no	shade tree and wildlife food	
<i>Rhamnus arguta</i>	Saw-toothed buckthorn	no		
<i>Rhamnus cathartica</i>	Common buckthorn	Yes		
<i>Rhamnus davurica</i>	Dahurian buckthorn	no		

<i>Rhamnus frangula</i>	Alder, Smooth, Glossy buckthorn, tall hedge Japanese buckthorn	no		
<i>Rhamnus japonica</i>	Chinese buckthorn	no		
<i>Rhamnus utilis</i>	Smooth sumac	no		
<i>Rubia pseudo-acacia</i>	Black locust	Yes physical, chemical	useful wood, nitrogen fixing	displace native
<i>Rorippa sylvestris</i>	Creeping yellow- cress	no	ability and flowers	vegetation, seeds toxic
<i>Rosa multiflora</i>	Multiflora rose,	Yes chemical, burning	1950's wildlife cover, living	invades agricultural
<i>Rumex acetosella</i>	Japanese rose Garden sorrel	no	fence, and food	lands, pastures
<i>Saponaria officinalis</i>	Bouncing bet, Soapwort	Yes physical	planted as ornamental	
<i>Setaria faberii</i>	Japanese bristlegrass	Yes	used to make soapy	
<i>Solanum dulcamara</i>	Bittersweet	no	leather	
<i>Solanum viarum</i>	Tropical soda apple	no		
<i>Sonchus arvensis</i>	Field sow-thistle,	no		
<i>Sorghum alinum</i>	Perennial sowthistle	no		
<i>Sorghum halepense</i>	Columbus grass	Yes		
<i>Spiraea japonica</i>	Johnson grass	Yes		
<i>Trapa natans</i>	Japanese spiraea	Yes		
<i>Ulmus pumila</i>	Water chestnut	Yes		
<i>Valeriana officinalis</i>	Siberian elm	Yes		
<i>Verbascum thapsus</i>	Common valerian	Yes		
<i>Viburnum lantana</i>	Flannel mullein	Yes		
	Wayfaring tree	no		
<i>Viburnum opulus</i>	European highbush cranberry	Yes chemical		

<i>Vinca minor</i> <i>Vincetoxicum</i>	Periwinkle or Myrtle Black swallowwort	Yes physical, chemical no	medicinal herb and aphrodisiac	crowds out native herbaceous vegetation
<i>Vincetoxicum rossicum</i> <i>Wisteria sinensis</i>	Swallow-wort Chinese wisteria	physical, chemical, no burning Yes		outcompeting native wildflowers and young trees

Draft 12/12/05

## A Sampling of Reference Books For Gardening With Native Plants

Aldrich, William and Don Williamson. 2003. *Perennials for Illinois*. Auburn, WA: Lone Pine Publishing International Inc.

Aldrich, William and Don Williamson. 2004. *Tree and Shrub Gardening for Illinois*. Auburn, WA: Lone Pine Publishing International Inc.

Birdseye, Clarence and Eleanor G. Birdseye. 1951. *Growing Woodland Plants*. New York: Dover Publications, Inc.

Cox, Jeff. 1985. *The Perennial Garden*. Emmaus, Pennsylvania: Rodale Press.

Cullina, William. 2000. *Growing and Propagating Wildflowers of the United States and Canada*. Boston/New York: Houghton Mifflin Company.

Cullina, William. 2002. *Native Trees, Shrubs & Vines*. Boston/New York: Houghton Mifflin Company.

Dirr, Michael. 1990. *Manual of Woody Landscape Plants*, ed. 4. Urbana, IL: Stipes Publishing Company.

Drake, Rick. 2002. *The American Woodland Garden: Capturing the Spirit of the Deciduous Forest*. Portland, Oregon: Timber Press.

Druse, Ken. 1992. *The Natural Shade Garden*. New York/Toronto/London/Sydney: Random House Inc.

Druse, Ken. 1994. *The Natural Habitat Garden*. New York: Clarkson Potter.

Ellis, Barbara W. 1998. *Taylor's Guide to Growing North America's Favorite Plants*. Boston/New York: Houghton Mifflin Company.

Fizzell, James A. 2002. *Illinois Gardener's Guide: Revised Edition*. Nashville, TN: Cool Spring Press.

Fizzell, James A. 1999. *Month-by-Month Gardening in Illinois*. Franklin, TN: Cool Springs Press.

Harstad, Carolyn. 1999. *Go Native! Gardening with Native Plants and Wildflowers in The Lower Midwest*. Bloomington and Indianapolis, Indiana: Indiana University Press.

Johnson, Lorraine, (Editor). 2004. *Wild Ones Landscaping with Native Plants*, 4<sup>th</sup> Edition. Appleton, WI: Wild Ones: Native Plants, Natural Landscapes.

Knopf, Jim, S. Wasowski, J. Boring, G. Keator, J. Scott and E. Glasener. 1997. *A Guide to Natural Gardening*. San Francisco, CA: Fog City Press.

Kurz, Don. 2004. *Illinois Wildflowers*. Pettigrew, Arkansas: Cloudland.net Publishing.

McClain, William E. 1997. *Prairie Establishment and Landscaping*. Technical Publication #2. Springfield, IL: Division of Natural Heritage. Illinois Department of Natural Resources.

Nowaskowski, Keith Gerard. 2004. *Native Plants in the Home Landscape*. Circular 1381, Urbana, IL: University of Illinois Extension.

Ortho Books. 2001. *Ortho's All About Attracting Hummingbirds and Butterflies*. Des Moines, Iowa: Meredith Books.

Rock, Harold W. 1981. *Prairie Propagation Handbook*. Wehr Nature Center, Franklin, WI: Milwaukee County Department of Parks, Recreation & Culture.

Runkel, Sylvan T. and Alvin F. Bull. 1994. *Wildflowers of Illinois Woodlands*. Ames, Iowa: Iowa State University Press.

Shirley, Shirley. 1994. *Restoring the Tallgrass Prairie*. Iowa City, Iowa: University of Iowa Press.

Smith, J. Robert. 1980. *The Prairie Garden*. Madison, Wisconsin: The University of Wisconsin Press.

Society For Ecological Restoration. 1997. *The Tallgrass Restoration Handbook*. Washington, D.C./Covelo, CA: Island Press.

Swink, Floyd and Gerould Wilhelm. 1994. *Plants of the Chicago Region*. 4<sup>th</sup> ed., Indianapolis, IN: Indiana Academy of Sciences.

Tenenbaum, Frances (Editor). 1999. *Taylor's 50 Best Shrubs*. Boston/New York: Houghton Mifflin Company.

Tenenbaum, Frances (Editor). 1999. *Taylor's 50 Best Trees*. Boston/New York: Houghton Mifflin Company.

Wasowski, Sally. 2002. *Gardening with Prairie Plants*. Minneapolis, MN: University of Minnesota Press.

Wilson, Jim. 1992. *Landscaping with Wildflowers*. Boston/New York/London: Houghton Mifflin Company.

# NON-INVASIVE NATIVE PLANT ALTERNATIVES FOR INVASIVE PLANT SPECIES

## INVASIVE

### TREES

*Acer ginnala* (Amur maple)

*Acer platanoides* (Norway maple)

### SHRUBS

*Elaeagnus angustifolia* (Russian olive)  
and *Elaeagnus umbellata* (Autumn olive)

*Lonicera tatarica* (Tartarian honeysuckle)

*Berberis thunbergii* (Japanese barberry)

*Buddleia davidii* (Butterfly bush)

*Ligustrum vulgare* (Privet)

*Spiraea japonica* (Japanese spiraea)

*Rhamnus cathartica* (Common buckthorn)

*Euonymus alata* (Burning bush)

### FORBS

*Coronilla varia* (Crown vetch)

*Hesperis matronalis* (Dame's rocket)

*Lythrum salicaria* (Purple loosestrife)

*Lotus corniculatus* (Bird's-foot trefoil)

*Vicia minor* (Periwinkle)

*Daucus carota* (Queen Anne's lace)

*Melilotus alba*, *M. officinalis*  
(White and Yellow sweetclover)

## NON-INVASIVE

### NATIVE ALTERNATIVE TREES

*Amelanchier arborea* (Serviceberry)  
*Carpinus caroliniana* (American hornbeam)

*Acer rubrum* (Red maple)

*Tilia americana* (American basswood)

### NATIVE ALTERNATIVE SHRUBS

*Cornus racemosa* (Gray dogwood)  
*Viburnum trilobum* (High-bush cranberry)

*Sambucus canadensis* (Common elderberry)

*Itea virginica* (Virginia sweetspire)

*Lindera benzoin* (Spicebush)

*Ceanothus americanus* (New Jersey tea)

*Hamamelis virginiana* (Witch hazel)

*Spiraea alba* (Meadow-sweet)

*Amelanchier arborea* (Serviceberry)

*Rhus typhina* (Staghorn sumac)

*Euonymus atropurpureus* (Wahoo)

### NATIVE ALTERNATIVE FORBS

*Helianthus strumosus* (Woodland sunflower)

*Phlox pilosa* (Downy phlox)

*Epilobium angustifolium* (Fireweed)

*Asclepias incarnata* (Marsh milkweed)

*Zizia aurea* (Golden alexanders)

*Parthenocissus quinquefolia* (Virginia creeper)

*Heracleum lanatum* (Cow parsnip)

*Veronicastrum virginicum* (Culver's root)

### GRASSES

*Miscanthus sinensis* (Chinese silver grass)

*Phalaris arundinacea* (Reed canary grass)

### NATIVE ALTERNATIVE GRASSES

*Andropogon gerardii* (Big bluestem)

*Spartina pectinata* (Prairie cord grass)

*Carex lacustris* (Lake sedge)

### VINES

*Ampelopsis brevipedunculata* (Porcelain berry)

*Celastrus orbiculatus* (Asiatic bittersweet)

*Hedra helix* (English Ivy)

*Lonicera japonica* (Japanese honeysuckle)

### NATIVE ALTERNATIVE VINES

*Mitchella repens* (Partridge berry)

*Celastrus scandens* (American bittersweet)

*Clematis virginiana* (Virgin's bower)

*Campsis radicans* (Trumpet creeper)

### AQUATIC PLANTS

*Eichhornia crassipes* (Water hyacinth)

*Butomus umbellatus* (Flowering rush)

*Typha angustifolia*, *T. x glauca*  
(Narrow-leaved & hybrid cattail)

*Iris pseudacorus* (Yellow water iris)

### NATIVE ALTERNATIVE AQUATICS

*Nymphaea odorata* (White water lily)

*Pontederia cordata* (Pickerel weed)

*Typha latifolia* (Broad-leaved cattail)

*Iris versicolor* (Blue flag iris)

*Acorus calamus* (Sweet flag)

**Non-invasive native alternative plants were chosen based on similar habitat, growth habits and flower/fruit characteristics when compared to the invasive plants. This list is not comprehensive for the invasive plants or for the native species that could be substituted. Scientific names follow Mohlenbrock, 1986.**

NATIVE PLANT SPECIES AVAILABLE FROM NATIVE PLANT NURSERIES

Genus species	common name	family	height (ft/in)	width (in)	habit	soil moisture	soil type	habitat	sun	bloom start	bloom end	bloom color
<i>Acer rubrum</i>	Red Maple	Aceraceae	1080	300-480	deciduous	medium			full, partial, shade	Mar	May	green
<i>Acer saccharinum</i>	Silver Maple	Aceraceae	960	480-720	deciduous	wet			full, partial, shade	Mar	Apr	green
<i>Acer saccharum</i>	Sugar Maple	Aceraceae	600-900	360-540	deciduous	dry			full, partial, shade	Apr	May	green
<i>Achillea millefolium</i>	Native Yarrow	Asteraceae	12-36	14-18	perennial	medium	sand, loam, clay, peat	prairie, savanna	full	Jul	Aug	white
<i>Acorus calamus</i>	Sweet Flag	Acoraceae	24-36			wet		wetlands	full, partial	May	Jun	green
<i>Actaea alba</i>	White Doll's Eyes	Ranunculaceae	12-24	12-24	perennial	medium	sand, loam, clay	woodland	partial, shade	May	Jun	white
<i>Actaea rubra</i>	Red Baneberry	Ranunculaceae	12-24	12-24	perennial	medium	sand, loam, clay	woodland	partial, shade	Jun	Jun	white
<i>Actinomeris alternifolia</i>	Wingstem	Asteraceae	12-48		perennial	wet			full	Jul	Oct	yellow
<i>Agalinis tenuifolia</i>	Slender false foxglove	Scrophulariaceae	36-84		annual	wet		prairie, woodland	full, partial	Aug	Oct	lavender
<i>Agastache foeniculum</i>	Lavender Hyssop	Lamiaceae	24-48	10-14	perennial	medium	sand, loam, clay, peat	prairie, savanna	full, partial	Jun	Sept	pink
<i>Agastache nepetoides</i>	Yellow giant hyssop	Lamiaceae	36-84	12-36	perennial	dry			full, partial	Jul	Oct	yellow
<i>Agastache scrophulariaefolia</i>	Purple Hyssop	Lamiaceae	36-72	10-14	perennial	medium	loam	savanna, woodland, wetland,	full, partial	Jul	Aug	purple
<i>Alisma subcordatum</i>	Common water plantain	Alismataceae	24-48		perennial	wet		meadow	full	Jul	Sept	white
<i>Allium canadense</i>	Wild Onion	Liliaceae	12-24		perennial	dry		meadow, woodland	full, partial	Apr	Jul	pink
<i>Allium cernuum</i>	Nodding Pink Onion	Liliaceae	12-24	6	perennial	medium	sand, loam, clay	prairie, savanna	full, partial	Jul	Aug	pink
<i>Amelanchier arborea</i>	Service berry	Rosaceae	480		deciduous	medium	sand, clay		full, partial	Apr	Apr	white



<i>Amorpha canescens</i>	Leadplant	Fabaceae	12-48	14-18	perennial	dry	sand, loam	prairie, savanna	full	Jun	Jul	purple
<i>Anisonia tabernaemontana</i>	Common Bluestar	Apocynaceae	24-36	12-24	perennial	medium, wet	sand, loam, clay	woodland prairie, savanna, wet	partial, shade	Apr	May	blue
<i>Andropogon gerardii</i>	Big Bluestem	Poaceae	48-84	22-26	perennial	medium	sand, loam, clay, peat	meadow prairie, savanna, wet	full	Aug	Sept	bronze/red
<i>Andropogon scoparius</i>	Little Bluestem	Poaceae	24-48	14-18	perennial	dry	sand, loam	savanna	full	Aug	Sept	red
<i>Andropogon virginicus</i>	Broom sedge	Poaceae	24-48		perennial	medium			full	Aug	Sept	
<i>Anemone canadensis</i>	Canada Anemone	Ranunculaceae	12-24	12	perennial	medium, wet	sand, loam, clay		full, partial	May	Jul	white
<i>Anemone cylindrica</i>	Thimbleweed	Ranunculaceae	24-36		perennial	dry			full, partial	Jun	Aug	white
<i>Anemone virginiana</i>	Tall Anemone	Ranunculaceae	12-36		perennial	dry			partial, shade	Jun	Aug	white
<i>Anemonella thalictroides</i>	Rue Anemone	Ranunculaceae	6-12		perennial	dry			partial, shade	Mar	Jun	white/pink
<i>Angelica atropurpurea</i>	Great Angelica	Apiaceae	72-108	22-26	biennial	wet	sand, loam, clay, peat	prairie, wet land, savanna, wet	full, partial	May	Jun	white
<i>Apocynum androsaemifolium</i>	Spreading dogbane	Apocynaceae	12-48		perennial	dry			full, full	May	Sept	pink
<i>Aquilegia canadensis</i>	Wild Columbine	Ranunculaceae	24-36	14-18	perennial	medium	sand, loam	savanna, woodland wet	partial, shade	May	Jun	red/yellow
<i>Arisaema triphyllum</i>	Jack in the Pulpit	Araceae	12-24	6-12	perennial	medium, wet	sand, loam, clay	meadow, woodland	partial, shade	Apr	May	green
<i>Artemisia ludoviciana</i>	Prairie Sage	Asteraceae	24-36	18-22	perennial	medium	sand, loam, peat	prairie, savanna	full	Aug	Sept	
<i>Asarum canadense</i>	Wild Ginger	Aristolochiaceae	12	12	perennial	dry, medium	sand, loam, clay	woodland prairie, wetland, wet	partial, shade	May	Jun	red
<i>Asclepias incarnata</i>	Red Milkweed	Asclepiadaceae	36-60	10-14	perennial	wet	loam, peat	meadow	full, partial	Jun	Sept	pink

<i>Asclepias purpurascens</i>	Purple Milkweed Prairie	Asclepiadaceae	24-36	10	perennial dry	sand, loam, peat	prairie, savanna	full, partial	July	purple
<i>Asclepias sullivantii</i>	Milkweed, Sullivant's Milkweed	Asclepiadaceae	24-36		perennial dry	loam, clay		full	Aug	pink
<i>Asclepias syriaca</i>	Common milkweed	Asclepiadaceae	24-48		perennial dry	sand, loam, clay	prairie, savanna	full, partial	Aug	pink
<i>Asclepias tuberosa</i>	Butterfly Weed	Asclepiadaceae	24-36	6	perennial dry	sand		full, partial	Aug	Orange
<i>Asclepias verticillata</i>	Whorled milkweed	Asclepiadaceae	12-24		perennial dry			full, partial	Sept	white
<i>Aster azureus</i>	Sky-blue Aster	Asteraceae	12-36	14-18	perennial dry	sand, loam, clay	prairie	full, partial	Sept	blue
<i>Aster cordifolius</i>	Heart-leaved aster	Asteraceae	24-48		perennial dry		prairie, savanna, wet meadow,	partial, shade	Sept	blue
<i>Aster drummondii</i>	Drummond's Aster	Asteraceae	24-48	14-18	perennial medium	sand, loam, clay, peat	woodland	full, partial	Sept	
<i>Aster ericoides</i>	Heath Aster	Asteraceae	12-36	14-18	perennial dry	sand, loam	prairie, savanna	full, partial	Sept	white
<i>Aster laevis</i>	Smooth Blue Aster	Asteraceae	24-48	14-18	perennial dry	sand, loam	prairie	full, full,	Sept	blue
<i>Aster lateriflorus</i>	Side-flowering aster, Calico Aster	Asteraceae	12-36	12	perennial medium	sand, loam, clay		partial, shade	July	white
<i>Aster macrophyllus</i>	Big-leaved aster	Asteraceae	6-24	12	perennial dry	sand, loam, clay	prairie, savanna, wetland, wet meadow	partial, shade	July	lavender
<i>Aster novae-angliae</i>	New England Aster	Asteraceae	48-60	18-22	perennial wet	sand, loam, clay, peat		full, partial	July	violet
<i>Aster pilosus</i>	Frost Aster	Asteraceae	24-48	18-22	perennial medium	sand, loam	prairie	full	Aug	white
<i>Aster praealtus</i>	Willow aster	Asteraceae	24-48		perennial wet			full, partial	Sept	blue
<i>Aster puniceus</i>	Bristly aster	Asteraceae	36-72		perennial wet			full	Aug	violet
<i>Aster puniceus firmus</i>	Shining aster	Asteraceae	36-72		perennial wet			full	Sept	violet

<i>Aster sagittifolius</i>	Arrow-leaved-Aster	Asteraceae	24-48	14-18	perennial dry	sand, loam, clay, peat	prairie, savanna, wet meadow, woodland prairie, savanna	shade	Aug	Sept	lavender
<i>Aster sericeus</i>	Silky Aster	Asteraceae	12-24	6-10	perennial dry	loam		full, partial	Sept	Oct	purple
<i>Aster shorii</i>	Short's aster	Asteraceae	12-48	12	perennial dry	sand, loam, clay	prairie, meadow	partial, shade	Aug	Oct	blue
<i>Aster simplex</i>	Panicled Aster	Asteraceae	36-48	14-18	perennial wet	loam, peat	prairie, meadow	partial, shade	Sept	Oct	white
<i>Aster umbellatus</i>	Flat-top aster	Asteraceae	12-48		perennial wet	sand, loam	prairie, savanna	full, partial	Jul	Aug	white
<i>Asragalus canadensis</i>	Canada Milk Vetch Smooth false foxglove	Fabaceae	12-36	14-18	perennial medium	loam		full, partial	Jul	Aug	cream
<i>Aureolaria flava</i>		Scrophulariaceae	36-60		perennial dry			partial, shade	Jul	Oct	yellow
<i>Baptisia australis</i>	Blue Wild Indigo	Fabaceae	24-48	18-22	perennial dry	loam, clay	prairie,	full, partial	May	Jun	blue
<i>Baptisia leucantha</i>	White Wild Indigo	Fabaceae	36-60	22-26	perennial medium	sand, loam, clay	prairie	full	May	Aug	white
<i>Baptisia leucophea</i>	Cream Wild Indigo	Fabaceae	12-36	18-22	perennial dry	sand	prairie, savanna	full	May	Jun	cream
<i>Betula nigra</i>	River birch	Betulaceae	960		deciduous wet			full, partial	May	May	green
<i>Bidens cernua</i>	Nodding bur marigold	Asteraceae	12-36 in		wet			full	Jun	Oct	yellow
<i>Bidens coronata</i>	Tall swamp marigold,	Asteraceae	24-60 in		annual						
<i>Blephilia ciliata</i>	Downy Wood Mint	Lamiaceae	12-24	10-14	perennial medium	loam	savanna, woodland	full, partial	Jun	Jul	purple
<i>Blephilia hirsuta</i>	Hairy Wood Mint	Lamiaceae	12-24	10-14	perennial medium	sand, loam	savanna, woodland	full, partial	Jun	Aug	white
<i>Bouteloua curtipendula</i>	Side Oats Grama	Poaceae	24-36	14-18	perennial dry	sand, loam	prairie, savanna	full	Jul	Aug	tan
<i>Bromus ciliatus</i>	Fringed Brome		24-48	14-18	perennial wet	sand, loam, peat	prairie, wet meadow	full, partial	Jun	Jul	
<i>Bromus kalmii</i>	Prairie Brome	Poaceae	12-36	14-18	perennial dry	sand, loam	prairie, savanna, savanna, wet meadow,	full, partial	Jun	Jul	tan
<i>Cacalia atriplicifolia</i>	Pale Indian Plantain	Asteraceae	60-96	22-26	perennial dry	sand, loam	prairie, meadow,	full, partial	Jul	Sept	white

<i>Cacalia multenbergii</i>	Great Indian Plantain	Asteraceae	48-84	18-22	perennial	dry	loam, clay woodland prairie, wetland, wet meadow prairie, wet	full, partial	Jun	Aug	white
<i>Cacalia suaveolens</i>	Sweet Indian Plantain	Asteraceae	48-72	14-18	perennial	wet	loam, peat sand, loam, peat	full, partial	Sept	Sept	white
<i>Cacalia tuberosa</i>	Prairie Indian Plantain	Asteraceae	24-36	10-14	perennial	medium	peat	full	Jul	Aug	white
<i>Calamagrostis canadensis</i>	Blue Joint Grass	Poaceae	36-72	18-22	perennial	wet	sand, loam, clay, peat	full, partial	Jun	Aug	tan
<i>Campanula americana</i>	Tall Bellflower	Campanulaceae	12-24	6	perennial	medium	loam	partial, shade	Jul	Nov	blue
<i>Carex bebbii</i>	Bebb's Sedge	Cyperaceae	12-24	10-14	perennial	wet	sand, loam, peat	full, partial	Jun	Jun	
<i>Carex bicknellii</i>	Prairie Sedge	Cyperaceae	12-24	10-14	perennial	dry	sand, loam	full	May	Jun	
<i>Carex comosa</i>	Bristly Sedge	Cyperaceae	12-36	10-14	perennial	wet	sand, loam, clay, peat	full, partial	May	Jun	green
<i>Carex crinita</i>	Fringed Sedge	Cyperaceae	12-36	10-14	perennial	wet	sand, loam, peat	full, partial, shade	May	May	
<i>Carex hystrix</i>	Botlebrush Sedge, Porcupine Sedge	Cyperaceae	12-36	14-18	perennial	wet	sand, loam, clay, peat	full, partial, shade	May	Jun	green
<i>Carex sprengelii</i>	Woodland Sedge	Cyperaceae	12	6-10	perennial	medium	sand, loam, clay woodland wetland, wet meadow	partial, shade	May	Jun	
<i>Carex stipata</i>	Fox Sedge	Cyperaceae	12-36	10-14	perennial	wet	sand, loam, peat	full, partial, shade	Jun	Jul	green
<i>Carex vulpinoidea</i>	Brown Fox Sedge	Cyperaceae	12-36	10-14	perennial	wet	sand, loam, peat	full, partial	May	Jun	green

<i>Cassia hebecarpa</i>	Wild Senna	Fabaceae	48-72	14-18	perennial	wet	sand, loam, peat	prairie, wetland, wet meadow	full, partial	Jul	Aug	yellow
<i>Ceanothus americanus</i>	New Jersey Tea	Rhamnaceae	12-36	22-26	perennial	dry		prairie, wetland, savanna, wet	full	Jun	Aug	white
<i>Cinna arundinacea</i>	Wood Reed Grass	Poaceae	36-60	14-18	perennial	wet	sand, loam, peat	meadow, woodland	full	Jun	Jul	tan
<i>Coreopsis lanceolata</i>	Lance-leaf Coreopsis	Asteraceae	12-36	6	perennial	dry	sand, loam	prairie, savanna	full	May	Jul	yellow
<i>Coreopsis palmata</i>	Prairie Coreopsis	Asteraceae	12-24	6	perennial	dry	sand, loam	prairie	full, partial	Jun	Jul	yellow
<i>Coreopsis tripteris</i>	Tall Coreopsis	Asteraceae	48-84	22-26	perennial	medium	loam, clay	prairie, savanna	full, partial	Jul	Aug	yellow
<i>Desmanthus illinoensis</i>	Illinois Bundle Flower, Illinois Sensitive Plant	Fabaceae	24-48	14-18	perennial	dry	sand, loam	prairie	full	Jul	Aug	yellow
<i>Desmodium canadense</i>	Showy Tick Trefoil	Fabaceae	24-48	14-18	perennial	medium	sand, loam, clay	prairie	full	Jul	Aug	purple
<i>Desmodium illinoense</i>	Illinois Tick Trefoil	Fabaceae	48-72	14-18	perennial	dry	sand, loam	prairie	full, partial	Jul	Aug	purple
<i>Echinacea angustifolia</i>	Narrow-leaved Coneflower	Asteraceae	12-36	6-10	perennial	dry	sand, loam, clay	prairie	full, partial	Jun	Jul	purple
<i>Echinacea pallida</i>	Pale Purple Coneflower	Asteraceae	36-48	10-14	perennial	dry	sand, loam, clay	prairie, savanna	full	Jun	Jul	purple
<i>Echinacea purpurea</i>	Purple Coneflower	Asteraceae	36-48	14-18	perennial	medium	sand, loam, clay, peat	prairie, savanna	full, partial	Jun	Jul	purple
<i>Elymus canadensis</i>	Canada Wild Rye	Poaceae	36-60	14-18	perennial	medium	sand, loam, clay, peat	prairie, savanna, wet meadow, wetland,	full	Jul	Aug	tan
<i>Elymus riparius</i>	Riverbank Wild Rye	Poaceae	36-60	14-18	perennial	wet	sand, loam, clay, peat	meadow, woodland, prairie,	full, partial	Jun	Jul	tan
<i>Elymus villosus</i>	Silky Wild Rye	Poaceae	36-60	18-22	perennial	medium	loam	savanna	full, partial	Jul	Aug	tan

<i>Elymus virginicus</i>	Virginia Wild Rye	Poaceae	36-60	14-18	perennial	medium	loam sand, loam	prairie, savanna	full, partial	Jul	Aug	tan
<i>Eryngium yuccifolium</i>	Rattlesnake Master	Apiaceae	36-48	10-14	perennial	medium	loam, peat	prairie, wetland, wet meadow	full	Jul	Aug	white
<i>Eupatorium maculatum</i>	Spotted Joe Pye Weed	Asteraceae	48-72	14-18	perennial	wet	loam, peat	prairie, wetland, wet meadow	full	Jul	Aug	purple
<i>Eupatorium perfoliatum</i>	Boneset	Asteraceae	24-60	14-18	perennial	wet	loam, peat	meadow, wetland, wet	full	Jul	Oct	purple
<i>Eupatorium purpureum</i>	Purple Joe Pye Weed	Asteraceae	48-84	14-18	perennial	dry	loam sand, loam	savanna, woodland	partial	Jul	Aug	pink
<i>Euphorbia corollata</i>	Flowering Spurge	Euphorbiaceae	12-36	10-14	perennial	dry	loam	prairie, prairie, wetland, wet	full, partial	Jun	Aug	white
<i>Gentiana andrewsii</i>	Bottle Gentian	Gentianaceae	24-36	6	perennial	wet	sand, loam, peat	wetland, wet meadow	full, partial	Aug	Oct	blue
<i>Geum triflorum</i>	Prairie Smoke	Rosaceae	12	6	perennial	dry	sand, loam	prairie, wetland, wet	full	Apr	May	pink
<i>Glyceria canadensis</i>	Rattlesnake grass	Poaceae	12-36	10-14	perennial	wet	loam, peat	meadow	full	Jun	Jul	tan
<i>Glyceria grandis</i>	Reed Mana Grass	Poaceae	36-60	18-22	perennial	wet	sand, loam, clay, peat	wetland, wet meadow	full	Jul	Jul	tan
<i>Glyceria striata</i>	Fowl Mana Grass	Poaceae	24-60	14-18	perennial	wet	sand, loam, clay, peat	prairie, wet meadow, woodland	full, partial	Jun	Jul	tan
<i>Helenium autumnale</i>	Sneezeweed, Dogtooth Daisy	Asteraceae	36-60	22-26	perennial	wet	loam, peat	wetland, wet meadow	full, partial	Jul	Aug	yellow
<i>Helianthus grosseserratus</i>	Sawtooth Sunflower	Asteraceae	72-108	22-26	perennial	medium	sand, loam, clay, peat	prairie, wetland, wet meadow	full, partial	Jul	Sept	yellow
<i>Helianthus occidentalis</i>	Western Sunflower	Asteraceae	24-36	14-18	perennial	dry	sand, loam, clay	prairie, wetland, wet meadow	full	Jul	Aug	yellow
<i>Helianthus strumosus</i>	Woodland Sunflower	Asteraceae	12-36	18-22	perennial	dry	sand, loam, clay	prairie, savanna, woodland	full, partial	Jun	Aug	yellow

<i>Lobelia siphilitica</i>	Great Blue Lobelia	Campanulaceae	12-24	6	perennial	wet	sand, loam, peat	prairie, wetland, wet	full, partial	Jul	Aug	blue
<i>Lupinus perennis</i>	Wild Lupine	Fabaceae	12-36	10-14	perennial	dry	sand, loam	savanna, prairie, wetland, wet	full, partial	Apr	Jul	blue
<i>Lycopus americanus</i>	Water Horehound, Bugleweed	Lamiaceae	12-24	6-10	perennial	wet	sand, loam, peat	meadow, emergent	full	Jul	Aug	white
<i>Lysimachia quadriflora</i>	Prairie Loosestrife	Pyrolaceae	12-24	6-10	perennial	wet	sand, loam, peat	prairie, wetland, wet	full	Jul	Aug	
<i>Lythrum alatum</i>	Winged Loosestrife	Lythraceae	12-24	6-10	perennial	wet	sand, loam, peat	meadow, emergent	full	Jun	Aug	
<i>Mentha arvensis</i>	Wild Mint	Lamiaceae	12-36	10-14	perennial	wet	sand, loam, peat	prairie, wetland, savanna, wet	full, partial	Jul	Aug	
<i>Minulus rigens</i>	Monkey Flower	Scrophulariaceae	24-36	6-10	perennial	wet	loam, peat	meadow	full	Jun	Jul	blue
<i>Monarda fistulosa</i>	Wild Bergamont	Lamiaceae	24-48	18-22	perennial	dry	sand, loam	prairie, savanna	full, partial	Jul	Aug	lavender
<i>Monarda punctata</i>	Dotted Mint	Lamiaceae	12-24	10-14	perennial	dry	sand	prairie, savanna, prairie, wetland, wet	full, partial	Jul	Aug	lavender
<i>Napea dioica</i>	Glade Mallow	Menyanthaceae	48-72	22-26	perennial	wet	loam, peat	meadow	full, partial	Jun	Aug	white
<i>Oenothera biennis</i>	Evening Primrose	Onagraceae	36-72	22-26	perennial	dry	sand, loam, clay, peat	meadow, woodland, prairie, savanna, wet	full, partial	Jul	Aug	white
<i>Panicum virgatum</i>	Switch Grass	Poaceae	48-72	22	perennial	wet	sand, loam, clay, peat	meadow	full	Aug	Sept	gold

<i>Parthenium integrifolium</i>	Wild Quinine	24-48	10-14	perennial	wet, medium	loam, clay	meadow	full	Jul	Aug	white
<i>Penstemon digitalis</i>	Smooth Penstemon	12-36	10-14	perennial	wet, medium	loam	savanna	full, partial	Jun	Jul	white
<i>Petalostemum candidum</i>	White Prairie Clover	12-24	6	perennial	dry	loam	savanna	full, partial	Jun	Oct	white
<i>Petalostemum purpureum</i>	Purple Prairie Clover	12-24	6	perennial	dry	loam	savanna	full	Jun	Sept	purple
<i>Phlox pilosa</i>	Prairie Phlox, Downy Phlox	12-24	6	perennial	dry	loam	prairie	full	May	Jul	pink
<i>Physostegia virginiana</i>	Obedient Plant	24-36	22-26	perennial	wet	loam, peat	wetland, meadow	full	Jul	Aug	pink
<i>Polemonium reptans</i>	Jacob's Ladder	12	6	perennial	medium	loam	savanna, woodland	full, partial	Apr	Jun	blue
<i>Potentilla arguta</i>	Prairie Cinquefoil	12-24	6	perennial	dry	loam	prairie	full	Jul	Aug	white
<i>Pycnanthemum virginianum</i>	Mountain Mint	24-36	14-18	perennial	wet	peat	prairie, wetland, wet	full	Jul	Aug	white
<i>Ratibida pinnata</i>	Yellow Coneflower	48-60	14-18	perennial	medium	clay, peat	prairie, savanna	full	Jul	Aug	yellow
<i>Rudbeckia hirta</i>	Black-eyed Susan	12-36	10-14	perennial	medium	clay, peat	prairie, savanna	full	Jul	Aug	yellow
<i>Rudbeckia laciniata</i>	Wild Golden Glow, Green Headed Coneflower	60-96	22-26	perennial	wet, medium	clay, peat	prairie, wetland, savanna, wet	full, partial	Jul	Sept	yellow
<i>Rudbeckia subtomentosa</i>	Sweet Black-eyed Susan	48-60	22-26	perennial	wet	clay, peat	wetland, savanna, wet	full, partial	Jul	Aug	yellow
<i>Rudbeckia triloba</i>	Brown-eyed Susan	36-60	14-18	perennial	medium	loam	savanna, woodland	full, partial	Aug	Oct	yellow
<i>Ruellia humilis</i>	Wild Petunia	12-24	6	perennial	dry	loam	prairie, savanna	full	Jun	Jul	violet



<i>Scirpus atrovirens</i>	Dark Green Bulrush	Cyperaceae	36-60	14-18	perennial	wet	loam, peat sand,	welland, wet meadow, emergent	full	Jun	Aug	yellow
<i>Scirpus validus</i>	Great Bulrush	Cyperaceae	36-60	14-18	perennial	wet	loam, peat sand,	welland, emergent	full	Jun	Jul	red
<i>Silene regia</i>	Royal Catchfly	Caryophyllaceae	12-36	6-10	perennial	dry	loam sand,	savanna prairie,	full, partial	Jul	Aug	white
<i>Silene stellata</i>	Starry Campion	Caryophyllaceae	12-36	6	perennial	medium	loam	savanna	full, partial	Jul	Sept	white
<i>Silphium integrifolium</i>	Rosin Weed	Asteraceae	48-72	18-22	perennial	medium, dry	sand, loam,	clay, peat prairie	full	Jul	Sept	yellow
<i>Silphium laciniatum</i>	Compass Plant	Asteraceae	48-108	22-26	perennial	dry	sand, loam,	prairie, wetland, wet	full	Jun	Aug	yellow
<i>Silphium perfoliatum</i>	Cupplant	Asteraceae	48-108	22-26	perennial	wet	clay, peat	meadow prairie,	full	Jun	Jul	yellow
<i>Silphium terebinthinaceum</i>	Prairie Dock	Asteraceae	48-108	22-26	perennial	medium	sand, loam,	wetland, wet	full	Jul	Aug	yellow
<i>Solidago flexicaulis</i>	Zig-zag Goldenrod	Asteraceae	12-36	10-14	perennial	medium	loam, clay	savanna, partial, woodland shade	full, partial, shade	Aug	Sept	yellow
<i>Solidago graminifolia</i>	Grass-leaved Goldenrod	Asteraceae	12-36	18-22	perennial	wet	sand, loam,	wetland, wet	full	Aug	Sept	yellow
<i>Solidago nemoralis</i>	Old-field Goldenrod	Asteraceae	12-36	10-14	perennial	dry	peat sand,	meadow prairie,	full, partial	Aug	Oct	yellow
<i>Solidago ohioensis</i>	Ohio Goldenrod	Asteraceae	12-36	14-18	perennial	wet	loam	savanna prairie,	full	Aug	Oct	yellow
<i>Solidago riddellii</i>	Riddell's Goldenrod	Asteraceae	12-36	14-18	perennial	wet	sand, loam,	wetland, wet	full	Aug	Oct	yellow
<i>Solidago rigida</i> ( <i>Oligoneuron rigidum</i> )	Stiff Goldenrod	Asteraceae	36-48	14-18	perennial	dry	clay, peat	meadow prairie,	full	Aug	Oct	yellow

<i>Sorghastrum nutans</i>	Indian Grass	Poaceae	48-72	18-22	perennial	medium, dry	sand, loam, clay	savanna prairie, prairie, wetland, wet	full	Aug	Sept	gold
<i>Spartina pectinata</i>	Prairie Cord Grass	Poaceae	48-72	22-26	perennial	wet	clay, peat	meadow	full	Aug	Sept	gold
<i>Sporobolus heterolepis</i>	Prairie Dropseed	Poaceae	24-36	14-18	perennial	dry	sand, loam	savanna prairie,	full	Jul	Aug	gold
<i>Tephrosia virginicum</i>	Goats Rue		12-24	14-18	perennial	dry	sand	savanna prairie,	full, partial	Jun	Jul	pink, yellow
<i>Thalictrum dasycarpum</i>	Meadow Rue	Ranunculaceae	36-72	10-14	perennial	wet	sand, loam, peat	wetland, savanna, wet				
<i>Tradescantia ohioensis</i>	Spiderwort	Commelinaceae	12-24	10	perennial	dry	sand, loam	meadow prairie, savanna	full, partial	Jun	Aug	white
<i>Verbena hastata</i>	Blue Vervain	Verbenaceae	36-60	10-14	perennial	wet	sand, loam, peat	wetland, wet	full	Jun	Aug	blue
<i>Verbena stricta</i>	Hoary Vervain	Verbenaceae	12-36	10-14	perennial	dry	sand, loam	prairie, wetland,	full	Jun	Jul	blue
<i>Vernonia fasciculata</i>	Ironweed	Asteraceae	48-72	22-26	perennial	wet	sand, loam, peat	wet meadow prairie,	full	Jul	Sept	red/pink
<i>Veronicastrum virginicum</i>	Culver's Root	Scrophulariaceae	24-48	6	perennial	wet	loam, clay	meadow wet	full	Jul	Aug	white
<i>Viola pedatifida</i>	Prairie Violet	Violaceae	12	6	perennial	dry	sand, loam	prairie, savanna	full, partial	May	Jun	
<i>Zizia aptera</i>	Heart-leaved Aster	Apiaceae	12-36	10-14	perennial	dry	sand, loam	prairie, savanna	full, partial	Apr	Jun	
<i>Zizia aurea</i>	Golden Alexander	Apiaceae	24-48	10-14	perennial	medium	sand, loam, clay	savanna, woodland	full, partial	May	Jul	yellow



ATTRACTS BUTTERFLIES	COMMON NAME	ATTRACTS BUTTERFLIES	COMMON NAME
<i>Agastache foeniculum</i>	Blue Giant Hyssop	<i>Vernonia fasciculata</i>	Common Ironweed
<i>Agastache nepetoides</i>	Yellow Giant Hyssop	<i>Viola species</i>	Violet
<i>Allium species</i>	Onions	<i>Zizia species</i>	Golden Alexanders
<i>Amorpha canescens</i>	Lead Plant		
<i>Aquilegia canadensis</i>	Columbine		
<i>Asclepias incarnata</i>	Swamp Milkweed		
<i>Asclepias sullivantii</i>	Prairie Milkweed		
<i>Asclepias syriaca</i>	Common Milkweed		
<i>Asclepias tuberosa</i>	Butterfly Milkweed		
<i>Aster ericoides</i>	Heath Aster		
<i>Aster laevis</i>	Smooth Aster		
<i>Aster lateriflorus</i>	Side-Flowering Aster		
<i>Aster macrophyllus</i>	Big-Leaved Aster		
<i>Aster pilosus</i>	Hairy Aster		
<i>Ceanothus americanus</i>	New Jersey Tea		
<i>Coreopsis lanceolata</i>	Sand Coreopsis		
<i>Dalea candida</i>	White Prairie Clover		
<i>Dalea purpurea</i>	Purple Prairie Clover		
<i>Desmanthus illinoensis</i>	Illinois Mimosa		
<i>Desmodium canadense</i>	Showy Tick Trefoil		
<i>Desmodium illinoense</i>	Illinois Tick Trefoil		
<i>Echinacea pallida</i>	Pale Purple Coneflower		
<i>Echinacea purpurea</i>	Purple Coneflower		
<i>Eupatorium species</i>	Thoroughwort		
<i>Helianthus occidentalis</i>	Western Sunflower		
<i>Helianthus strumosus</i>	Pale Leaved Sunflower		
<i>Heliopsis helianthoides</i>	False or Ox-Eye Sunflower		
<i>Liatris aspera</i>	Rough Blazing Star		
<i>Liatris pycnostachya</i>	Prairie Blazing Star		
<i>Liatris spicata</i>	Marsh Blazing Star		
<i>Lobelia cardinalis</i>	Cardinal Flower		
<i>Lupinus perennis</i>	Wild Lupine		
<i>Monarda fistulosa</i>	Wild Bergamot		
<i>Monarda punctata</i>	HorseMint		
<i>Phlox species</i>	Phlox		
<i>Physostegia virginiana</i>	Obedience Plant; False Dragonhead		
<i>Pycnanthemum species</i>	Mountain Mint		
<i>Ratibida species</i>	Prairie Coneflower		
<i>Rosa species</i>	Rose		
<i>Rudbeckia hirta</i>	Black-Eyed Susan		
<i>Rudbeckia subtomentosa</i>	Sweet Black-Eyed Susan		
<i>Rudbeckia triloba</i>	Brown-Eyed Susan		
<i>Silphium perfoliatum</i>	Cup Plant		
<i>Silphium terebinthinaceum</i>	Prairie Dock		
<i>Solidago flexicaulis</i>	Broadleaf Goldenrod		
<i>Tradescantia species</i>	Spiderwort		
<i>Verbena hastata</i>	Blue Vervain		
<i>Verbena stricta</i>	Rose or Hoary Vervain		

## NATIVE PLANTS FOR FLORAL ARRANGEMENTS

### Fresh Arrangement

*Agastache foeniculum*  
*Aquilegia canadensis*  
*Allium cernuum*  
*Asclepias tuberosa*  
*Asclepias syriaca*  
*Aster azureus*  
*Aster ericoides*  
*Aster laevis*  
*Aster lateriflorus*  
*Aster macrophyllus*  
*Aster pilosus*  
*Aster shortii*  
*Coreopsis lanceolata*  
*Echinacea pallida*  
*Echinacea purpurea*  
*Eryngium yuccifolium*  
*Helianthus strumosus*  
*Helenium autumnale*  
*Heliopsis helianthoides*  
*Liatris aspera*  
*Liatris ligulistylis*  
*Liatris pycnostachya*  
*Liatris spicata*  
*Lobelia cardinalis*  
*Lobelia siphilitica*  
*Monarda fistulosa*  
*Parthenium integrifolium*  
*Penstemon digitalis*  
*Ratibida pinnata*  
*Rudbeckia hirta*  
*Rudbeckia subtomentosa*  
*Rudbeckia triloba*  
*Silene regia*  
*Silphium laciniatum*  
*Silphium terebinthinaceum*  
*Solidago flexicaulis*  
*Solidago ohioensis*  
*Solidago rigida*  
*Verbena hastata*  
*Verbena stricta*  
*Vernonia fasciculata*  
*Veronicastrum virginicum*

### Dried Arrangement

*Andropogon gerardii*  
*Andropogon scoparius*  
*Asclepias incarnata*  
*Asclepias syriaca*  
*Aster macrophyllus*  
*Bouteloua curtipendula*  
*Echinacea angustifolia*  
*Echinacea pallida*  
*Echinacea purpurea*  
*Elymus canadensis*  
*Elymus virginicus*  
*Liatris aspera*  
*Liatris ligulistylis*  
*Liatris pycnostachya*  
*Liatris spicata*  
*Monarda fistulosa*  
*Panicum virgatum*  
*Solidago flexicaulis*  
*Solidago ohioensis*  
*Solidago rigida*  
*Sorghastrum nutans*  
*Spartina pectinata*

NATIVE PLANT NURSERIES--ILLINOIS

Company Name	County	Address	Phone	Web Address	email address	Specialties	wholesale or retail
Absolutely Wild Inc	Will	25310 S Stony Island Ave. Crete, IL 60417	(708)672-5908	www.absolutlywild.com			wholesale or retail
Aquatic Nursery Art and Land's Wildflowers	Kane	38 W. 139 McDonald Rd Elgin, IL 60123 3730 S. 59th Ave Cicero, IL 60804	(847)741-7678	in progress		All water plants, native and exotic local genotype prairie seeds and bare-root plants, design and installation Prairie, savanna, and wetland plants; consulting and seeds	wholesale and retail wholesale
Blazing Star Nursery	McHenry	2107 Edgewood Dr. Woodstock, IL 60098	(815)338-4716	www.blaazing-star.com	art@artandindaswildflowers.com jallgrass@blazing-star.com	south central Illinois eco-type; all native	mostly retail
Bluestem Prairie Nursery County Road Greenhouse	Montgomery	Hillsboro, IL 62049 19561 E. Twombly Rochelle, IL 61068 Route 2, Box 176 Wyoming, IL 61491	(217)532-6344	none	bluestemnursey@yahoo.com	contaminized prairie plants and wet plants	retail
Concave Company	Stark	9331 MCR 3800E Mason, IL 62664	(309)286-7366	www.prairieplugs.com		forbs, central Illinois ecotypes, prairie seed	
Earthskin Nursery	Mason	104 Enders Drive Cherry Valley, IL 31016	(217)482-3524	www.earthskinursery.com	lnetlms@springnet1.com		retail
Enders Greenhouse	Whandjaog	P.O. Box 104, Route 2 Dahlgren, IL 62828	(815)332-5255	www.endersgreenhouse.com	info@endersgreenhouse.com	Prairie, woodland, and wetland plants Grass seeds, and forb seeds from the Southern hill plain of Illinois	retail
Frey Prairie Seeds	Hamilton	23200 Hurd Road Tampco, IL 61283	(618)648-2216	none	none	native seed and herbaceous material Local south Cook County and Eastern Will County genotype; hard to find species	wholesale
Genesis Nursery Geard & Green Native Plant Nursery	Whiteoak	23355 Wentworth Ave Sleiger, IL 60475	(815)438-2220	www.genandgreene.com	info@geardandgreene.com	Native and exotic species	retail
Greenview Nurseries	Peoria	2700 W. Cedar Hills Dr. Dunlap, IL 61525	(708) 758-2295	www.geardandgreene.com	info@geardandgreene.com	Native and exotic species	retail
Grand Prairie Friends Hony Forum Forum- Hoff Forum Illinois Forest Product Company	Champaign	P.O. Box 36 Urbana, IL, 61801 10998 Salisbury Road Pleasant Plains, IL 62677 8699 Aenzville Rd Beardstown, IL 62618	(217) 244-5695 (217)626-1583 or 626-1690 1-866-304 TREE	www.prairienet.org/gpfl	jamese@unhs.uiuc.edu info@geardandgreene.com	Wholesale for plants, retail in quantities 100+ trees	wholesale forest retail all other products
Jed Hill	Bureau	R.R. 1, Box 81 Walnut, IL 61376	(815)379-2629		info@cas.com	Seeds	
King Nursery	Kendall	6849 Rt. 34 Oswego, IL 60543	(630) 554-1171	none	claudia.820@amerilic.net	native oaks wetland, prairie, timberland, native and herbaceous	wholesale
Lafayette Home Nursery	Stark	1 Nursery Lane or RR 1 Box 1A, Lafayette, IL	(309)995-3311	www.lafayettenuresery.com		Seeds from within 90mi. Of St. Charles, & consulting for prairie restorations	retail and wholesale
Landscape Naturally, Inc	DeKalb	Sycamore, IL 60178 P.O. Box 5 Tremont, IL 61568	(815)899-7574	www.leesgardens.com	lbnostit@aol.com	Hostia's wildflowers and Prairie plants in stock woodland plants in season	retail
Lee's Garden	Tazewell	Box 135 Oakford, IL 62673	(309)925-5262				
Louschery Gardens	Menard	17855 H. County Rd 2400 East Topeka, IL P.O. Box 64 Rockton, IL 61072	(309)535-2185	none	dlorvalth@dnmail.state.il.us	State nursery, only sells surplus	retail
Mason State Nursery	Mason	766 Bateman St. Galesburg, IL 61401	(309)343-2608			Seeds	
Midwest Wildflowers	Winnebago	38 W. 413 Highway 64 St. Charles, IL 60174	(630)584-0595	www.thenaturalgardening.com		Seeds of prairie grasses and forbs, perennials, and woodland wildflowers	retail and wholesale
Native Plant Materials	Knox	13002 Harrison Rd Shirland, IL 61079	(815)629-2546	none	none	Prairie grasses	wholesale (mostly)
The Natural Garden	Kane						
PrairieStar Nursery	Winnebago						

Possibility Place Nursery	Will	7548 W. Monnee- Manhattan Rd. Monnee, IL 2731 County Road 100N Alton, IL 61810	(708) 534-6272	www.possibilityplace.com	info@possibilityplace.com	Trees, shrubs, grasses and forbs native to Northern Illinois	wholesale and retail
Prairie Deck Nursery	Vermillion	RR, 1 Box 151, Bradford, IL 61421	(217) 834-3146				
Prairie Earth Nursery	Stark	705 S. Kenilworth Ave Oak Park, IL 60304	(309) 897-9911	in progress	jim_alwill@yahoo.com	prairie forbs and grass	wholesale
The Prairie Garden	Cook	10932 Park Road, Niantic IL 62551	(708) 386-7495	none		Plants, seeds, consulting, custom planting Select perennial, wildflower and woody landscape plants	wholesale and retail
The Prairie Patch The Propagators Private Stock	Macon	8805 Kermann Rd. Hebron, IL 60034	(217) 668-2409				
Purple Prairie Farm	Stark	P O Box 176, Route 2 Wyoming, IL 61491				Native grass and wildflower seeds	
Red Buffalo Nursery The Wildflower Source, Inc.	McHenry	10502 Seaman Rd., Hebron, IL 60034	(815) 648-4838		kaskel@imc.net		wholesale and retail
Windhill Prairie Shop	Lake	P O Box 312 Fox Lake, IL 60020					
	Ogle	RD 2 Oregon, IL 61061				Seeds of wildflowers and grasses	





Rohde's Nursery Taylor Creek Restoration Nurseries	Wood Green	N8098 Duck Creek Ave Neshkoro, WI 54960 P.O. Box 256 Broadhead, WI 53520 9107 W College Ave Franklin, WI 53132	(414)293-4373 608-897-8641 (414)25-8650	<a href="http://www.appliedeco.com">www.appliedeco.com</a> (click on T.C.R.N. icon)	Christina Bickford@appliedeco.com	Woodland, wetland, prairie plants, design consultation, restoration local genotypes Prairie seeds and instruction for sm. Projects in SE WI	mostly wholesale some retail
Wehr Nature Center	Waukesha						

NATIVE PLANT NURSERIES--INDIANA

Company Name	County	Address	Phone	Web Address	Email	Specialties	Wholesale or Retail
AgVenture D&M Seeds, Inc.	Newton	P.O. Box 102 Kentland, IN 47951				Native grass and wildflower seeds	
Beineke's Nursery	Tippecanoe	513 Sharon Rd West Lafayette, IN 47906	(765) 463-2994				retail
Crystal Palace Perennials	Lake	P.O. Box 154 St. Jogn, IN 46373					
Earthly Goods Ltd	Floyd	620 E Main St. New Albany, IN 47933	(812)944-2903	www.earthlygoods.com	info@earthlygoods.com	Native grass seeds, garden tools, prairie seed mix	Retail
Edge of the Prairie Wildflowers	Montgomery	1641 W. Oak Hill Road Crawfordsville, IN 47933	(765)362-0915	none	edgeoftheprairie@webtv.net	75 native species, herbs & grasses	Retail
Hearland Restoration Services, Inc.	Allen	14921 Hand Road, Fort Wayne, IN 46818	(260) 489-8511	www.earthsourceinc.net/heartland.html	ericummel@earthsourceinc.net	local genotype seed from northern part of state, native seeds	mostly wholesale
Indiana Propagation Nursery	Washington	3 Lyon BlockSalem, IN 47167				Native Trees	
J. F. New & Associates Jasper-Pulaski State	St. Joseph	128 Sunset Dr., Walkerton, IN 46574	(574) 566-2412	www.jfnewnursery.com	bjohnson@jfnew.com	Northern Indiana genotype woodland, wetland, savanna, and prairie plants, design sold at cost to Ind. Public	wholesale
Nursery	Pulaski	Forestry 15508 W. 700 N. Medaryville, IN 47957	(219) 843-4827	state web site	jpnrsty@home.fni.com		retail
Munchkin Nursery	Nom	323 Woodside Drive N.W. Depaue, IN 47115	(812) 633-4858	www.munchkinnursery.com	genebush@munchkinnursery.com	native plants and shade specialties	retail
Spence Restoration Nursery	Delaware	2220 E. Fuson Rd. Muncie, IN 47302	(765) 286-7154	www.spencenursery.com	kevin@spencenursery.com	broad range all herbaceous, seeds and plugs, No woody	Wholesale Only
Woody Warehouse	Hendricks	P.O. Box 259 Lizton, IN 46149	(317) 994-5487	www.woodywarehouse.com	sales@woodywarehouse.com	American native trees (midwest)	wholesale
Vallonia Sate Nursery	Jackson	P.O. Box 218 Vallonia, IN 47281	(812) 358-3621	dnr.in.gov/forestry	vallonianursery@dnr.in.gov	all bare root stock native to state, available for In. state residents only	retail

NATIVE PLANT NURSERIES--MISSOURI

Company Name	County	Address	Phone	Web Address	e-mail	specialties	wholesale or retail
Bowood Farms (wholesale only)	Pike	Fox Creek Lane Clarksville, MO 63336					
Easyliving Native Perennial Wildflowers	Cole	P.O. Box 105913 Jefferson City, MO 65109		<a href="http://www.easywildflowers.com">www.easywildflowers.com</a>			
Elixir Farm Botanicals Prairie Source	Norm	General Delivery Bixey, MO 65618				Chinese& indigenous medicinal seed, plants, roots, books	
	Henry	362 NW highway 18 Clinton, MO 64735	660-885-6127	<a href="http://www.prairiesource.com">www.prairiesource.com</a>	none	Consulting, contracting, Truax seeders, Plateau herbicide, wildflower mixes, and more	
		2906 Ossenfort Rd. Glencoe, MO 63038					
Gilberg Perennial Farms Hamilton Seeds and Wildflowers	Norm	16786 Brown Rd. Elk Creek, MO 65464					
	Texas						
		P.O. Box 327 St. Louis, MO 65109				Prairie woodland (MO. Ecotypes)	
Mangelsdorf Seed Co Missouri Wildflower Nursery	St. Louis	9814 Pleasant Hill Rd. Jefferson City, MO 65109				Seeds & plants; wildflowers and grasses	
	Cole			<a href="http://www.mowildflowers.net">www.mowildflowers.net</a>	<a href="mailto:mowildflrs@socket.net">mowildflrs@socket.net</a>	Shrubs, grasses, wildflowers, plants, seeds	
Rock Post Wildflower Nursery	Callaway	5798 Windy Meadows Lane Fulton, MO 65251	(573)496-3492			all native products; trees, shrubs, vines; seeds in packet and in pounds	mostly retail
		396 SW Davis-LaDue Clinton, MO 64735				Bare-root and potted forbs, grasses, and trees; NO SEEDS	
Sharp Brothers Seed Co.	Henry		(800)451-3779	none	none	Native grass and wildflower seeds	retail
		P.O. Box 1400 Louisiana, MO 63353					
Vermont Wildflower Farm	Pike						



NATIVE PLANT NURSERIES--MICHIGAN

Company Name	County	Address	Phone	Web Address	Email	Specialties	Wholesale or Retail
Arrowhead Alpines	Clinton	P.O. Box 857 Fowlerville, MI 48836	(517) 223-8750	www.arrowhead-alpines.com	danielapresley@hotmail.com	Wildflowers, perennials and rock plants, conifers, shrubs	Retail
Cold Stream Farm	Norm	2030 Free Soil Rd. Free Soil, MI 49411				Trees and shrubs	
Design by Nature	Shiawassee	9874 Chadwick Laingsburg, MI 48848	517-651-6502	none	designsbynature@hotmail.com	prairie planting/installation environmental education, wetland plants	wholesale & sponsor club sales
Gaia Grass	Eaton	3947 E. St. Joe Grand Ledge, MI 48837	517-627-7927	www.gaiaqrass.com	jean@gaiagrass.com	Native Michigan genotype grass seed	
Grass Roots Inc.	Eaton	P.O. Box 4001 E. Lansing, MI 48826					
Grow Wild Nursery	Shiawassee	P.O. Box 401 Byron, MI 48418					
Michigan Wildflower Farm	Ionia	11770 Culter Rd Portland, MI 48875	(517)647-6010	none	wildflowers@voyager.net	Michigan native wildflower and grass seed	Retail
Nativescape LLC	Washtenaw	10380 clinton Rd., Manchester, MI 48158	(517)456-9696	www.nativescape.net	info@nativescape.net	shore restoration; residential and commercial	Wholesale
Native Connection	St. Joseph	62781 Shaffer Road Constantine, MI 49042	269-435-2208	none	jerry@nativeconnections.net	Design, Consultation, Installation and native grass seed	
Native Plant Nursery	Washtenaw	P.O. Box 7841 Ann Arbor, MI 48107	734-677-3260	www.nativeplant.com	plants@nativeplant.com	Wildflower purchases & consultations; Native perennial plants; ecological restoration	
Olkos Tree Crops	Kalamazoo	P.O. Box 19425 Kalamazoo, MI 49019				Alpine, woodland species	
Owl Ridge Alpines	Oakland	5421 Whipple Lake Rd Clarkston, MI 48016					
Sandhill Farm	Kent	11250 ten mile Road Rockford, MI 49341	616-691-8241	none	cheryl@iserv.net	Michigan native forbs; woodland, wetland, & grasses	
Sorus Plants	Washtenaw	3998 Edmonon court Ann Arbor, MI 48103	734-678-6685	www.sorusplants.com	info@sorusplants.com	Michigan native ferns	Wholesale & Retail
Vanbochove's Forest & Green house	Kalamazoo	1019 Miller Rd , Kalamazoo, MI 49001	(800) 233-5025	in progress	none	plant division Great lake basin native plants, prairie, savanna, wetland custom work	Wholesale & Retail
Vans Pines Nursery, Inc.	Norm	7550-144th Ave. West Olive, MI 49460				Grasses, trees, ground covers and shrubs	
Western Regional Environmental Network	Muskegon	1001 E. Wesley Ave. Muskegon, MI 49442				Edu. Info. Only, native plants and seeds	
Wetlands Nursery	Saginaw	P.O. Box 14553 Saginaw, MI 48601	989-752-3493	www.wetlands-nursery.com	jewel@wetlands-nursery.com	aquatic and semi-aquatic plants; bare-root plants and seeds	wholesale
Wildtype Native Plants and Seeds	Ingham	900 Every Rd. Mason, MI 48854	(517) 244-1140	www.wildtypeplants.com	wildtype@msu.edu	native trees, shrubs, grasses and forbs, ecological design & consulting, restoration and	

NATIVE PLANT NURSERIES--IOWA

Company Name	County	Address	Phone	Web Address	Email	Specialties	Wholesale or Retail
Allendan Seed	Madison	1966 175th Lane Winterset, IA 50273	(515) 462-1241	in progress	allendan@allendandseed.com	Iowa genotype native grass, wildflowers, seeds, some plants	wholesale & retail
Carl Kurtz	Norm	1562 Blinford Ave. St Anthony, IA 50273				Mixed local ecotype native tall-grass prairie forbs and grasses	
Cascade Forestry Nursery Center	Dubuque	1621 McCabe Lane, Cascade, IA 52033	(563) 852-3042	www.cascadeforestry.com	naumen@cascadeforestry.com	Services (tree planting, spraying, timber evaluations) consulting	wholesale & retail
Cedar River Garden		P.O. Box 259 Palo, IA 52324	(319) 851-2161	none	none	Landscaping services, native wildflower plants and seeds	Retail
Custom Seed Services	Norm	26335 510th St. Walnut, IA 51577-9745	(712) 784-2430		custseed@metc.net	diverse eco-flower mix	wholesale & retail
Diversity Farms	Carroll	25494 320th. Street Dedham, IA 51440	(712) 683-5556	none	dfarms@pionet.net	working with individual clients	Retail
Ion Exchange	Norm	1878 Old Mission Dr. Harpers Ferry, IA 52146	(800) 291-2143	www.ionxchange.com	hbright@acegroup.cc	all native prairie species, savanna species, woodland species	wholesale & retail
Iowa Prairie Seed Co.	Muscatine	1740 220st. Sheffield, IA 50475	(641) 892-4111	www.iowapraireseed.com	iwaseed@getatlus.com	Eco-type seeds, wide variety	wholesale & retail
Iowa Prairie Seed Co.	Franklin	P.O. Box 228 Sheffield, IA 50475	(515) 892-4111			Local genotype seeds	
Kingfisher Farm	Scott	29633 170th Ave, Long Grove, IA 52756	(563) 285-5406	none	kingfishr@netins.net	Prairie Seeds, *All inquiries please send by email.	Retail
McGinnis Tree and Seed Co.	Mills	309 E. Florence Glenwood, IA 51534	(712) 527-4308	www.tallgrassprairie-mcgininis.com	gualhrun@mchsi.com	Unique plants from high bluffs, (will grow in other areas)	retail
Osenbaugh Grass Seeds	Norm	11009 542st Lucas, IA 50151	(800) 582-2788	none	john@iowatelecom.net	Prairie seeds, Conservation preserve prairie mixes	wholesale & retail
Prairie Grass Unlimited	Des Moines	P.O. Box 59 Burlington, IA 52601	(319) 754-8639				
Reeves Wildflower Nursery	Norm	28431 200th St. Harper, IA 52231	(641) 635-2817	none	ravreeves@lisco.com	presentations and workshops	retail
Rose Hill Nursery	Norm	2282 Teller Rd. Rose Hill, IA 52586				Grass and wildflower seeds	
State Forest Nursery	Story	2404 South Duff Avenue, Ames, IA	(515) 233-1161	www.iowadnr.com	none	*must be planted in Iowa*	wholesale

## Websites on Native Plant Gardening/Landscaping

Chicago Botanic Garden - [www.chicagobotanic.org](http://www.chicagobotanic.org)

Conservation Reserve Program – [www.nrcs.usda.gov/programs/crp/](http://www.nrcs.usda.gov/programs/crp/)

Eastern Illinois University—[www.eiu.edu/~n\\_plants](http://www.eiu.edu/~n_plants)

Grand Prairie Friends – [www.prairienet.org/gpf](http://www.prairienet.org/gpf)

Illinois Audubon Society – [www.illinoisaudubon.org](http://www.illinoisaudubon.org)

Illinois Department Natural Resources/“Corridors for Tomorrow”  
<http://dnr.state.il.us/lands/education/id/contents.htm>

Illinois Native Plant Society – [www.ill-inps.org](http://www.ill-inps.org)

Illinois Natural History Survey – [www.inhs.uiuc.edu/](http://www.inhs.uiuc.edu/)

Iowa Prairie Network Services – [web.grinnell.edu/cps/Prairie\\_Information/Basics.htm](http://web.grinnell.edu/cps/Prairie_Information/Basics.htm)

The Lady Bird Johnson Wildflower Center—[www.wildflower.org](http://www.wildflower.org)

Missouri Botanical Garden (the Kemper Center for Home Gardening) – [www.mobot.org](http://www.mobot.org)

Missouri “Grow Native Program” – [www.grownative.org](http://www.grownative.org)

The Morton Arboretum – [www.mortonarb.org](http://www.mortonarb.org)

National Wildlife Federation – [www.nwf.org](http://www.nwf.org)

Prairie Crossings – [www.prairiecrossing.com](http://www.prairiecrossing.com)

State Beautification Initiative (Patti Blagojevich’s, First Lady of IL, Program) -  
[www.illinois.gov/firstlady/faq.cfm](http://www.illinois.gov/firstlady/faq.cfm)

U.S. Department of Agriculture—[plants.usda.gov](http://plants.usda.gov)

U.S. Environmental Protection Agency – [www.epa.gov/greenacres/](http://www.epa.gov/greenacres/)

Wild Ones – [www.for-wild.org](http://www.for-wild.org)





5. If you sell native plant species, do you currently promote them separately from other plants?

6. What was most useful to you? Why?

7. What was least useful to you? Why?

8. What additional information would be useful?

9. Would you advise others to attend our workshop on this topic? Why or why not?

10. Was any of the presented information contrary to your experience? If so, what?

11. As a result of this workshop, are you more apt to promote or increase the number of native plant species in your inventory? Why or why not?

12. Would a CD containing native plants that could sort them by their horticultural traits be useful? Why or why not?

13. Other comments.