



Giant City State Park

LOCATION

10 miles south of Carbondale, Illinois and 1 mile southeast of Makanda, Illinois in Jackson and Union counties.

DESCRIPTION

Total Acres: 4,052 • Huntible Acres: 2,891 • Forest Cover: 3,700 • Open, Cultivated, or Fallow Fields: 180

Located in the Shawnee Hills of Southern Illinois, with topography that is considered rugged. Many sandstone bluffs and steep ravines exist. Some of the most striking examples of stream erosion in sandstone are found in this area.

MOST PREVALENT GAME SPECIES

White Tail Deer • Rabbit • Squirrel • Turkey • Dove • Crow

OTHER FACILITIES AVAILABLE

16 ponds are located within the park, with 13 holding fishable populations of bluegill & largemouth bass.

8 hiking trails, totaling approximately 17 miles in length, offer spectacular views.

Picnic areas with playgrounds, shelters, outdoor privies and outdoor grills are located throughout the site.

CAMPING

85 Family Class "A" sites offer water, electricity, sanitary dump station, showers & flush toilets.

14 primitive Class "C" sites. 25 Equestrian Class "A" campsites.

Youth group camp capable of accommodating 125 people.

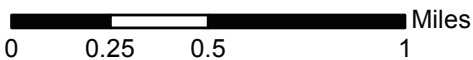
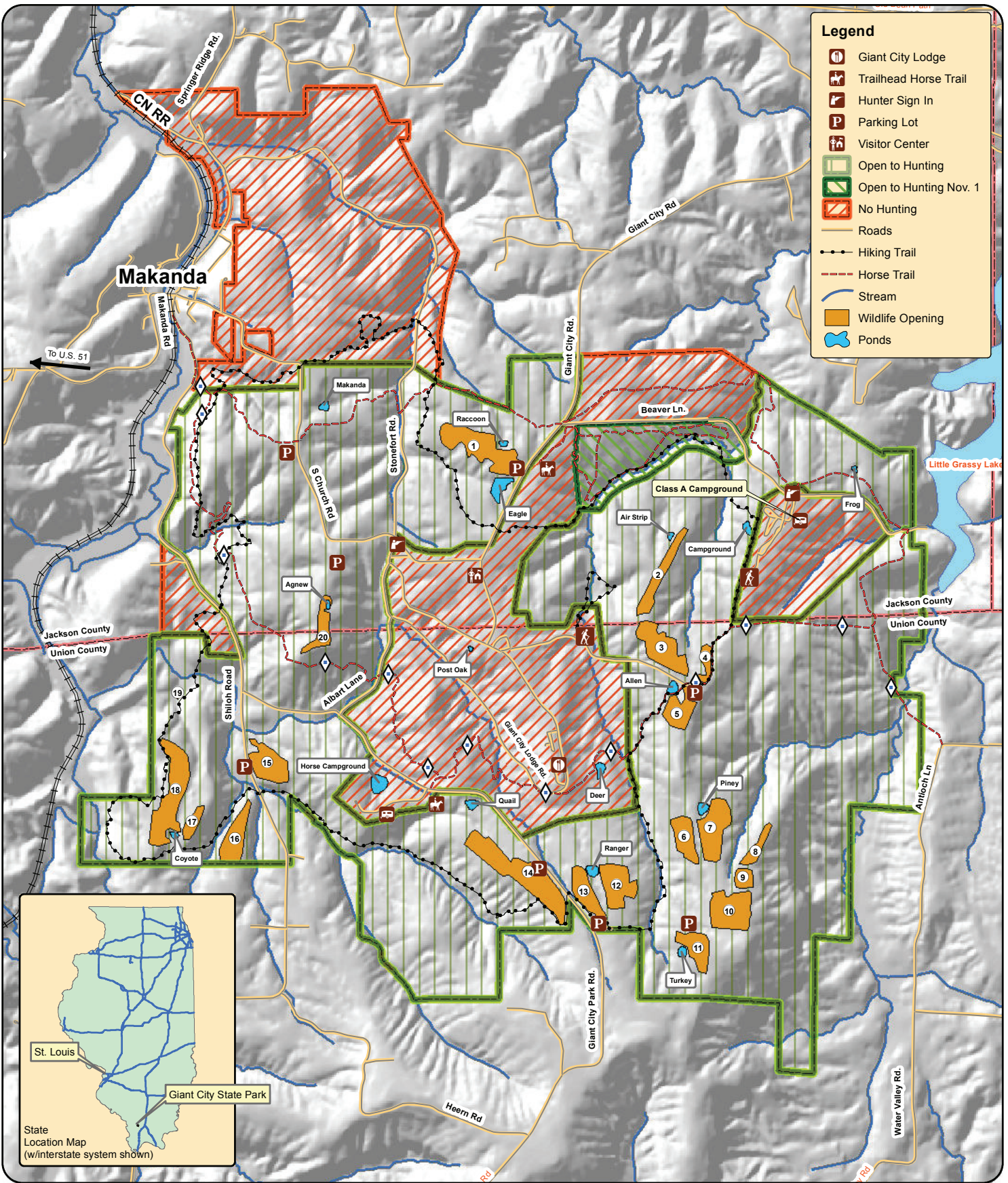
A backpacking campsite is available on Red Cedar Trail.

AREA REGULATIONS

1. All hunters must SIGN IN and OUT and report harvest each day at the registration boxes before leaving the site. Sign in sheets are located at the Wildlife Biologist office and at the front area of the class A campground.
2. Hunting is restricted to those areas posted as OPEN TO HUNTING. Please review the site map!
3. The area surrounding the Giant City Stables trails are closed to hunting from May 1 thru October 31.
4. Squirrel season opens the day after Labor Day through the end of the statewide season, .22 caliber rim fire rifles may be utilized in the Union County portion of the park only.
5. Portable stands are allowed for deer hunting. No permanent stands, screw-in steps or other devices that pierce the bark of the tree allowed. Tree stands must be legibly marked with the owner's name, address, and telephone number when left unattended. Tree stands may be left unattended only from September 15 to January 31. Only one tree stand per hunter.
6. Hunters engaged in quail and/or rabbit hunting must wear a cap and upper outer garment of solid and vivid blaze orange of at least 400 square inches.
7. No waterfowl hunting is allowed on park property.
8. Trapping by permit only. Designated areas only. See Visitor's Center staff for site specific permit.
9. Crow hunting is allowed Jan.1 through the close of the state-wide season.
10. Additional rules and regulations will be posted at the Visitor's Center.

For further information

Contact Site Superintendent, Giant City State Park, 235 Giant City Rd., Makanda, IL 62958, Phone: (618) 457-4836.



Giant City State Park **Hunting Map**

Makanda, Illinois

Date: 12/2/2014

