



TRAIL OF TEARS STATE FOREST

Emergency Telephone Numbers

911 (Union County)

Park Office: 618-833-4910

Union County Sheriff: 618-833-5500

Illinois State Police: 618-845-3740 or 618-542-2171 after 4pm

Cell service is extremely limited within the Forest.

Trail of Tears State Forest Rules:

- The gravel Forest Roads are **ONE** way, please follow the signs appropriately.
 - Portions of the gravel roads will be closed to traffic from December 24th until the end of the spring Wild Turkey season.
 - While fire trails are **CLOSED** to all vehicles, visitors may hike the multiple trails located throughout the site.
 - Off-road vehicles are **prohibited** within the State Forest.
- **Horseback riding** is allowed on designated Horse trails only, from May 1 thru October 31.
 - Daily access is available from 8:00 am. to Dusk. No overnight stays are allowed for horses.
 - In order to ensure safe, stable footing for the horses, Trails may be closed after periods of heavy rains. Please call ahead and confirm the trails area open after a recent rain event.
 - Access to the horse trails is from the designated parking area, located along the State Forest Road. Please register at the trail head sign-in station prior to embarking on your trail ride.
 - Groups of 10 riders or more must contact the site to obtain a group permit prior to using the trails.
- **Camping** with tents and small campers is allowed at designated sites.
- Early reservations may be made at www.camp.exploremoreil.com and walkups on a first come first served basis. Follow camper registration instructions at the White Barn on State Forest Rd.
 - Backpack campers must pre-register with the site office, 618-833-4910.
 - Large campers are discouraged due to the narrow gravel roads and limited access.
 - No electrical or water connections are located at the camp sites, although privies, a grill & picnic table are available.
- Access to the Ozark Hills Nature preserve is limited to the trail use only.
- **Hunting** is NOT allowed in the Ozark Hills Nature Preserve, within and adjacent to the day use & service areas, on tree nursery beds, on public roads, or within 300 yards of any building.
- Non-game animals, including snakes, are protected by law.
 - Please report any sightings of rare animals, including Bobcat & Timber Rattlesnake to site staff.
- Mushrooms, berries & tree fruit may be gathered for personal consumption only. Removal of plants or fungi for commercial sale is **PROHIBITED**.
- It is **ILLEGAL** to harvest any medicinal herb (including Ginseng and Goldenseal) from any state-owned property.
- All visitors are encouraged to remove all litter prior to leaving the site.
- **Mountain Bikes** are not allowed on horse trails and can only be ridden on gravel or paved surfaces.
- **Hiking trails** are abundant and can be found near the picnic areas. More information as well as additional site information is available at the White Barn located on State Forest Road across from the main picnic area entrance.

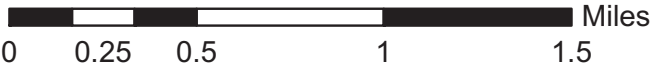
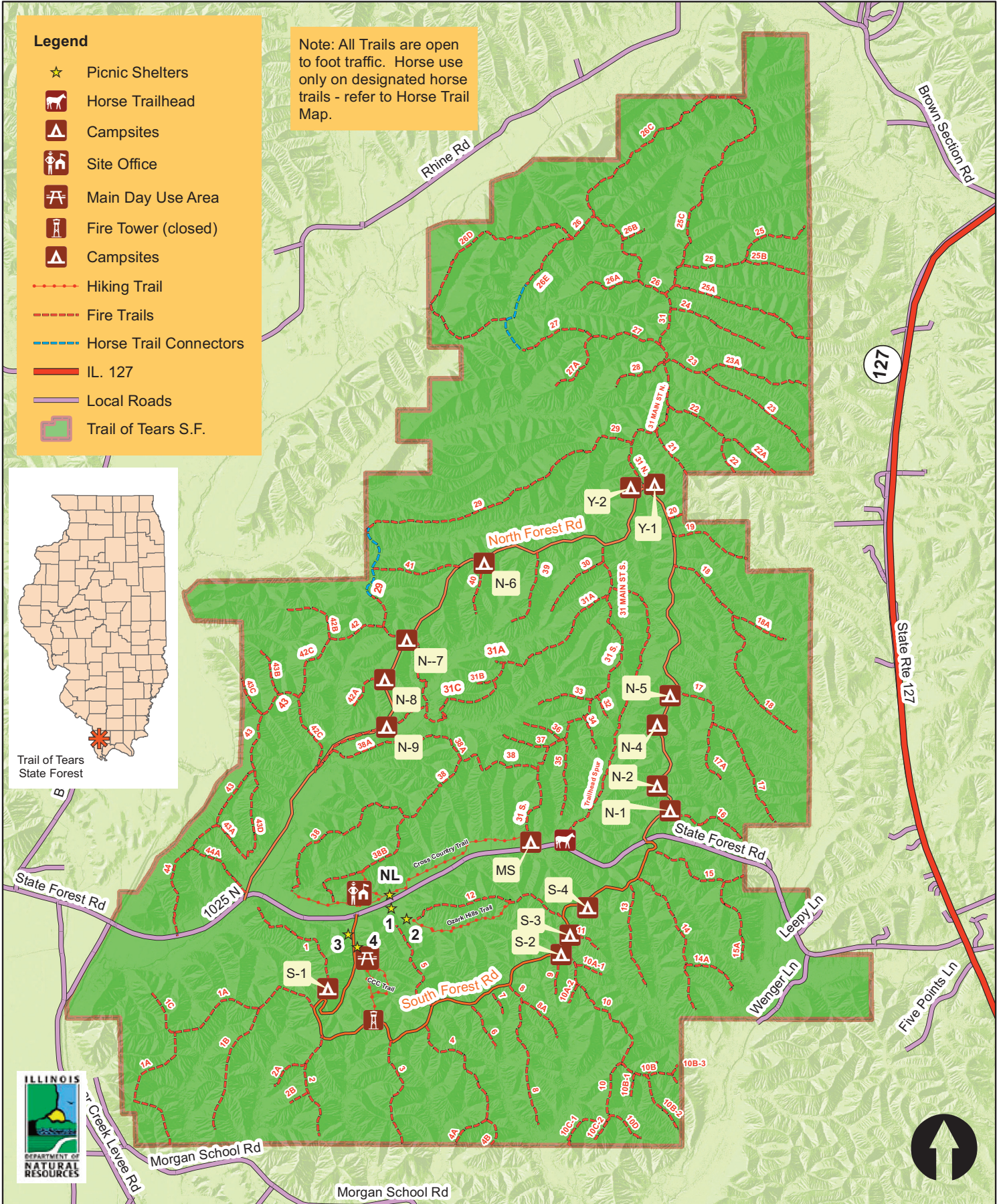
Feel free to contact us on site at **618-833-4910** for more information. Be patient as cell signals on the site are not reliable. We're not always in the office, leave us a message and we will return your call.



Legend

- ☆ Picnic Shelters
- Horse Trailhead
- Campsites
- Site Office
- Main Day Use Area
- Fire Tower (closed)
- Campsites
- Hiking Trail
- Fire Trails
- Horse Trail Connectors
- IL. 127
- Local Roads
- Trail of Tears S.F.

Note: All Trails are open to foot traffic. Horse use only on designated horse trails - refer to Horse Trail Map.



Trail of Tears State Forest
 Union County, Illinois
 Campsites w/shelters:
 S-1, S-2, N-6, N-8

Date: 4/6/2021

Visitor Map