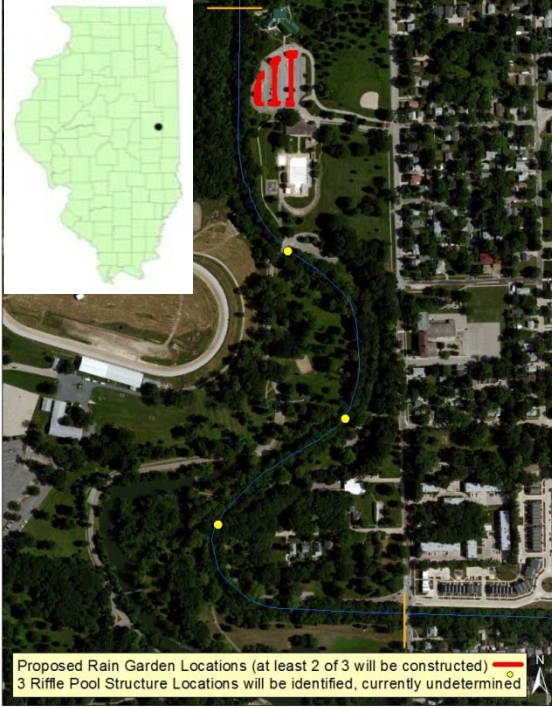
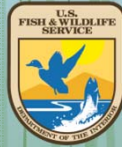


Saline Branch Instream & Floodplain Restoration Project

Restoration Update - December 2014

Partners:



Project Overview:

A Final Restoration Plan (RP) describing the terms of the Natural Resource Damage Assessment settlement and the Trustees approach to restoration with focus on the Saline Branch restoration project is available at: <http://www.dnr.illinois.gov/programs/NRDA/Pages/SalineSalt.aspx>.



Rock Riffle structures will be created to enhance the stream's riffle-pool flow sequence:

- dissipating the energy in the stream and allowing the stream banks to remain stable,
- as well as increasing habitat for aquatic life

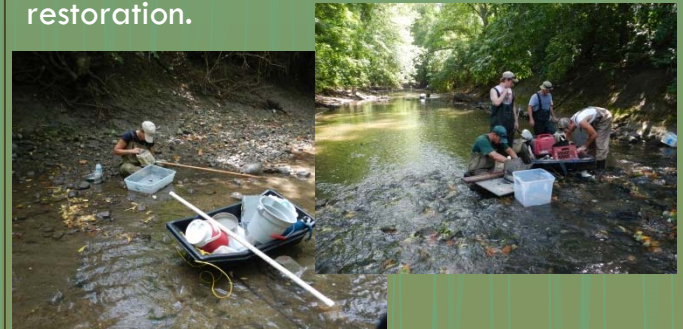
2014 Activities:

Bed Material Sampling:

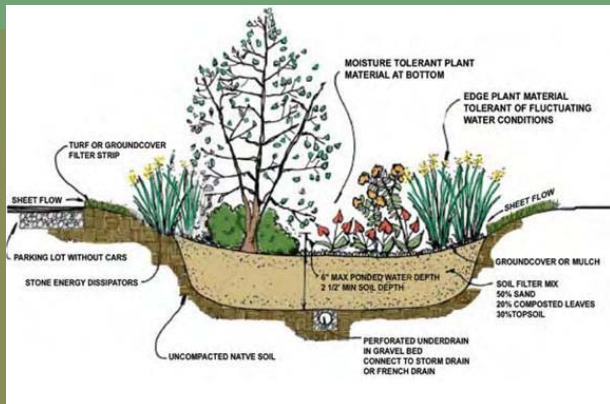
Streambed material was collected and is being analyzed; this information will be utilized for modeling and design purposes.

Fish and Aquatic Insect Sampling for Pre Restoration Monitoring:

Fish and insect surveys were conducted to determine the diversity and abundance of species in the stream reach prior to restoration.



Post monitoring surveys will be conducted after the restoration project is implemented to determine how the aquatic life change as a result of the restoration effort.



Rain Gardens will be constructed to capture and treat storm water runoff from parking lots; and provide habitat for wildlife

What's Happening Next

- Modeling
- Development of a Design
- Follow Permitting Process
- Additional Monitoring
- Project Implementation

IDNR NRDA Contact: Jessica Riney
(217) 524-0125; Jessica.Riney@illinois.gov