

## ERBSHA 2013 Fish Survey Results:

Oxbow #16 and Oxbow #23 surveyed on September 9th.

### From Oxbow #16, 22 fish species:

Shortnose Gar  
Spotted Gar  
Bowfin  
Gizzard Shad  
Common Carp  
Bighead Carp  
Silver Carp  
Bigmouth Buffalo  
Smallmouth Buffalo  
Quillback  
River Carpsucker  
Channel Catfish

Blackstripe Topminnow  
Brook Silversides  
Largemouth Bass

Warmouth  
Bluegill  
Longear Sunfish  
Orangespotted Sunfish  
Black Crappie  
White Crappie  
Freshwater Drum

### From Oxbow #23, 17 fish species:

Shortnose Gar  
Spotted Gar  
Bowfin  
Gizzard Shad  
Common Carp  
  
Silver Carp  
Bigmouth Buffalo  
Smallmouth Buffalo  
Quillback  
River Carpsucker

Flathead Catfish  
Pirate Perch

Spotted Bass

Bluegill

Black Crappie  
White Crappie  
Freshwater Drum

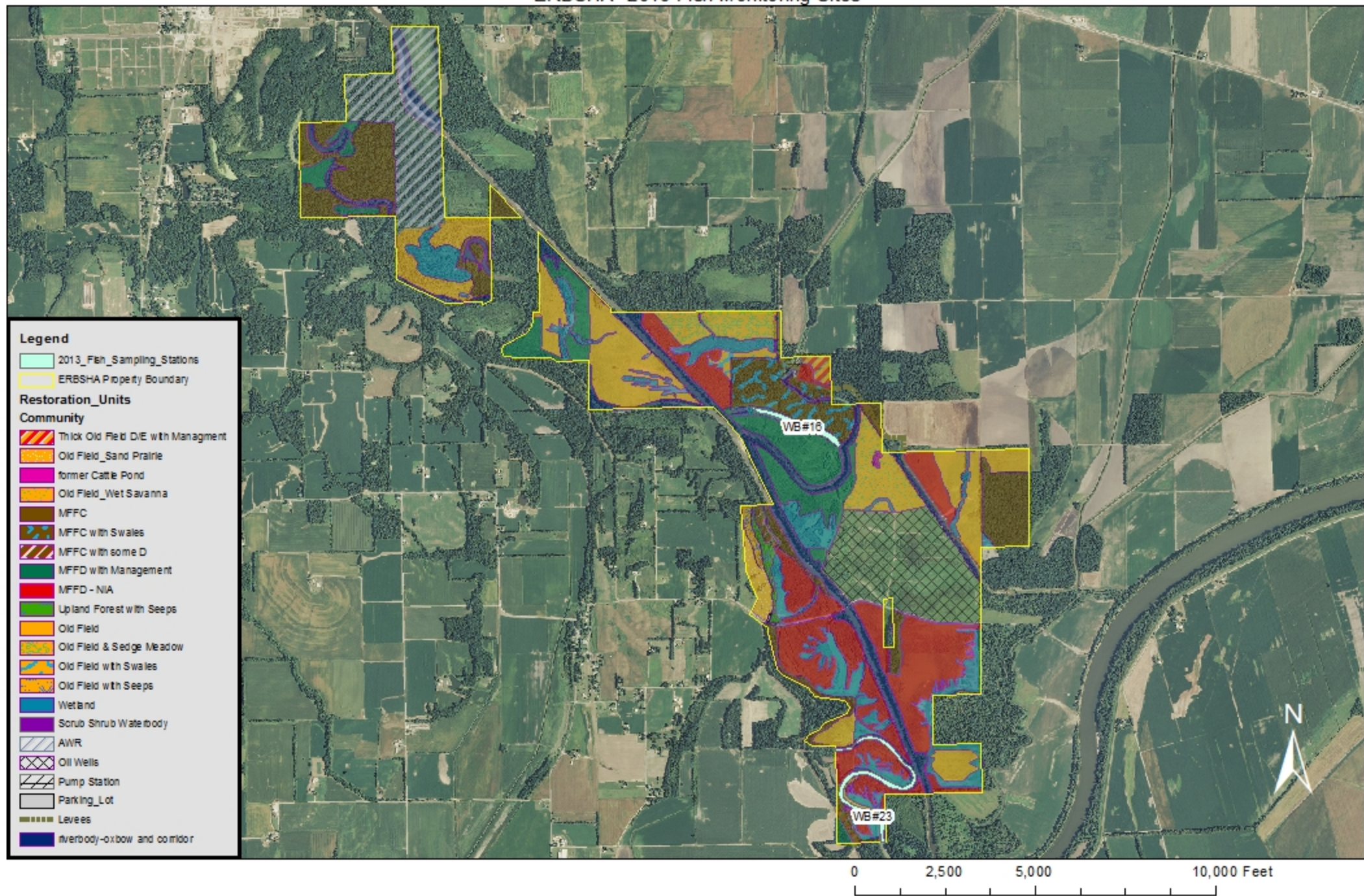
### Streams Biologist, Trent Thomas' Overall Summary of Observations:

A good number of species were present in the sample sites. These results indicate a year-to-year stability, at least in the sampled (larger) bodies of water.

- impressive large sizes of Bowfin, up to 10 pounds;
- two Gar species were present, but not overly dominant;
- the healthy Gizzard Shad population is likely the key to the food chain for the predator species;
- the Carp species were expected to be present;
- four Sucker species were collected, was hoping for higher numbers of each;
- good to see two Catfish species, but they were present in very low numbers
  - o would have liked to see higher numbers of these;
- good to see some smaller non-game species like Pirate Perch, Topminnows, and Silversides
  - o would like to see more of these present in the oxbows;
- the Bass population, particularly Largemouth Bass, could have been better;
- the other Sunfish species, especially Bluegill and White Crappie, appeared to be doing well in Oxbow #16, not so much in Oxbow #23;
- some impressive sizes on the Crappies, over a pound

General: Habitat-wise, there was no aquatic vegetation observed. But, there was a good amount of submerged woody debris. Water depth measurements were not taken. Temperature was extremely high, over 90 degrees F. Dissolved oxygen was not measured, but likely low.

# ERBSHA--2013 Fish Monitoring Sites



WB#16 Black Crappie  
11in. 1lb



WB#16 Bowfin  
26in. 7lbs



WB#16 Bowfin  
29in. 8.6lbs



WB#16 Gizzard Shad  
15in. 1.1lb



WB#23 Silver Carp



WB#23 Spotted Gar  
30in. 4.8lbs

