

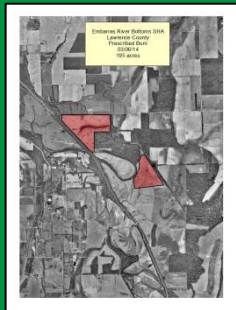
# Embarras River Bottoms State Habitat Area Management-Monitoring update Spring 2014



An updated Management-Monitoring Plan (MMP) describing the terms of the Natural Resource Damage Assessment settlement and a phased approach to restoration with focus on baseline monitoring and site preparation activities will be available at <http://www.dnr.illinois.gov/programs/NRDA/Pages/ERBSHA.aspx> and the Lawrence Public Library by June 15, 2014. This plan will be effective July 1, 2014 through June 30, 2015. The 2013-2014 plan is currently still available in the 2 locations.

## What's happening now

The MMP focuses on securing the site, monitoring baseline conditions, and preparing the site for restoration. Activities for the summer months may include, but not necessarily limited to, posting of property boundary markers, installation of gates, baseline monitoring, brush-cutting, mowing, herbiciding and oil well field management.



A **prescribed burn** was conducted in March. Prescribed burning will encourage the re-establishment of native communities and will maintain desired community structure. Prescribed burning will reduce encroachment by undesirable vegetation.



As part of a statewide species recovery effort, a second **barn owl nest box** will be erected at the site. This box will be monitored as part of the statewide effort.

**Photo stations** are being established to visually track the habitat changes over time.



The 30 ft **pipe gate** has been installed and locked at the northwest entrance of the habitat area.

**White fiberglass boundary markers** inscribed with the IDNR logo are gradually being placed at least every 300 ft along the perimeter of the property.



## What's happening next

- Monitoring plant and animal communities
- Brushing cutting and mowing activities
- Groundwater conservation funds update
- Look for the October/November update

### IDNR contact:

Beth Whetsell  
(217) 557-7816

[Beth.Whetsell@illinois.gov](mailto:Beth.Whetsell@illinois.gov)