

**STATE
OF
ILLINOIS**



WHAT FISH IS THIS ?



Illinois
Department of
Natural Resources

DIVISION OF FISHERIES

Printed by the authority of the State of Illinois

PRT3302454 - 50M - 6/03

Printed on Recycled Paper

Equal opportunity to participate in programs of the Illinois Department of Natural Resources (IDNR) and those funded by the U.S. Fish and Wildlife Service and other agencies is available to all individuals regardless of race, sex, national origin, disability, age, religion or other non-merit factors. If you believe you have been discriminated against, contact the funding source's civil rights office and/or the Equal Employment Opportunity Officer, IDNR, One Natural Resources Way, Springfield, Ill. 62702-1271; 217/785-0067; TTY 217/782-9175.

This information may be provided in an alternative format if required. Contact the DNR Clearinghouse at 217/782-7498 for assistance.

FISHES OF ILLINOIS

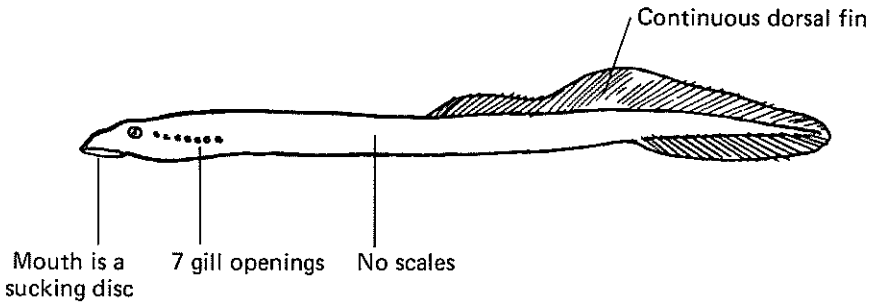
The purpose of these identification charts is to help the angler to identify some of the fish that are caught in Illinois.

There are 205 species of fish known to have occurred in Illinois; 9 of these species have since been extirpated from the state and 1 species is extinct. Presently, there are 203 species occurring in Illinois representing 87 genera and 30 families. Of the 203 species 180 species are native with 16 species having been introduced to the waters of Illinois. It would be impractical to give a complete description of all these fish in this manual; however, 78 of the more important or unusual fish are listed for identification. The obvious external characteristics are used for identification of the fish, in that these will be easier and quicker for the average person to understand.

A fish fact chart is included, giving information on some of the fish as to their life span, type of food eaten, etc. The figures given in this chart will vary according to climate, environment, and individual fish. Information on the accepted and local names of fish, The growth rate of fish and bait hook size chart are also included.

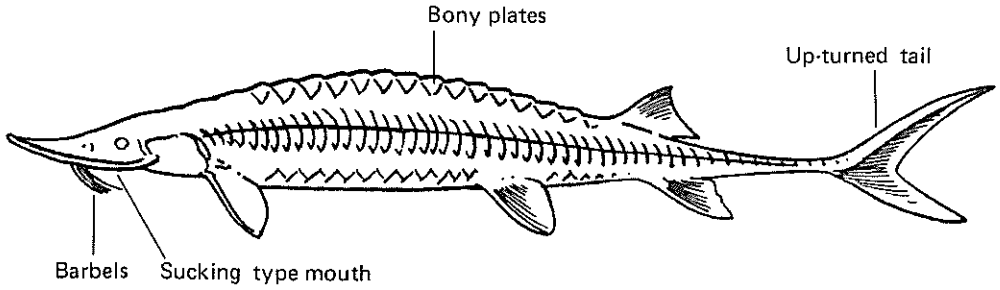
It is hoped that this short résumé will stimulate interest in fish for a fuller enjoyment of fishing.

LAMPREY FAMILY



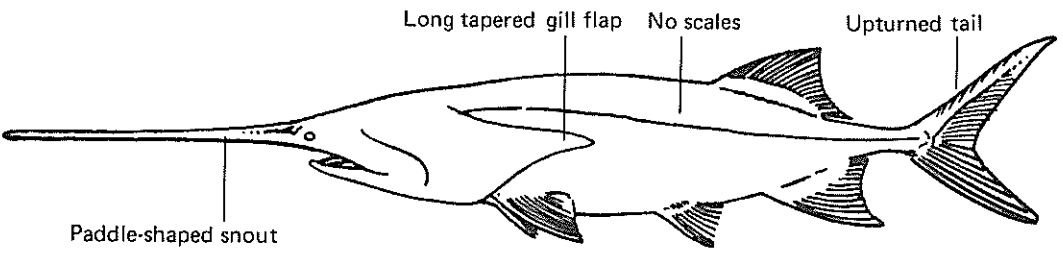
SILVER LAMPREY
(Ichthyomyzon unicuspis)

STURGEON FAMILY



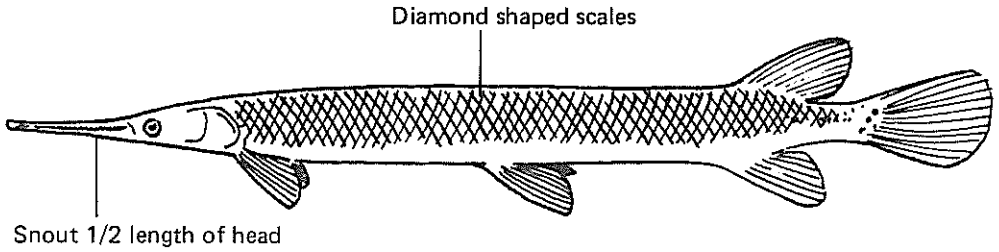
SHOVELNOSE STURGEON
(Scaphirhynchus platyrhynchus)

PADDLEFISH FAMILY

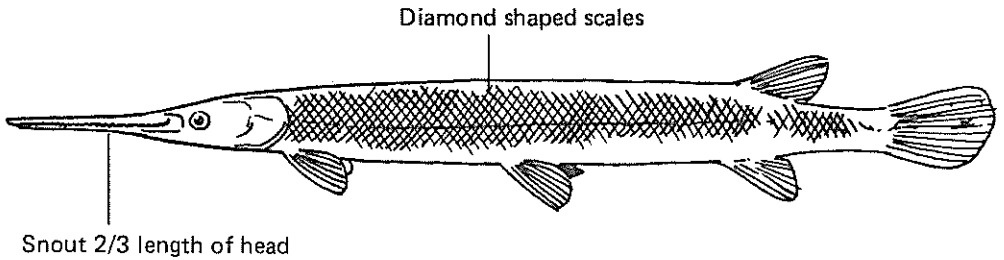


PADDLEFISH
(Polyodon spathula)

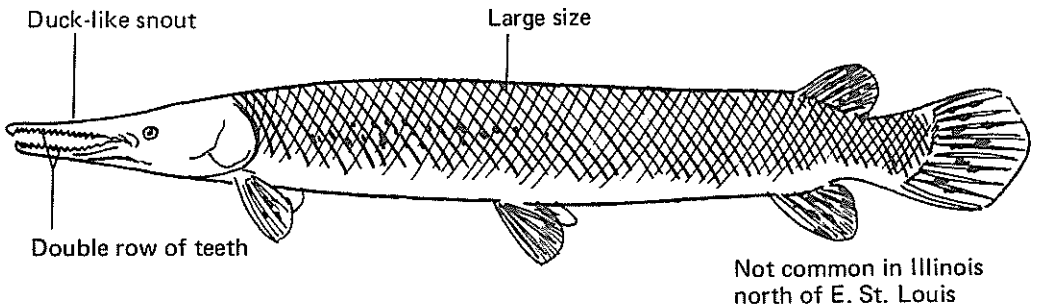
GAR FAMILY



SHORTNOSE GAR
(Lepisosteus platostomus)



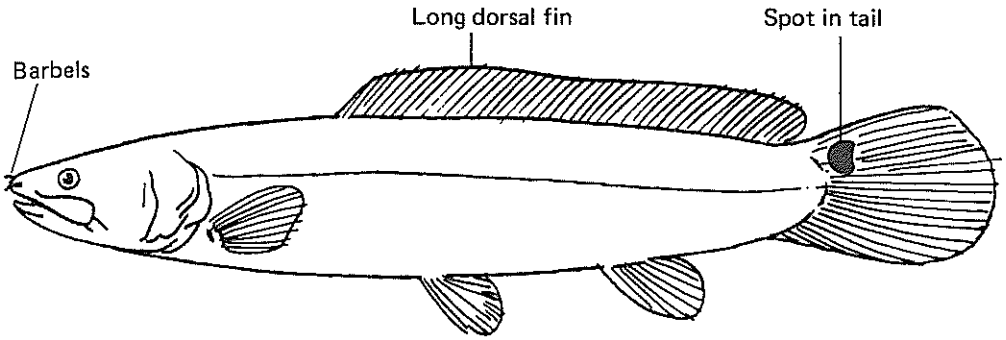
LONGNOSE GAR
(Lepisosteus osseus)



ALLIGATOR GAR
(Lepisosteus spatula)

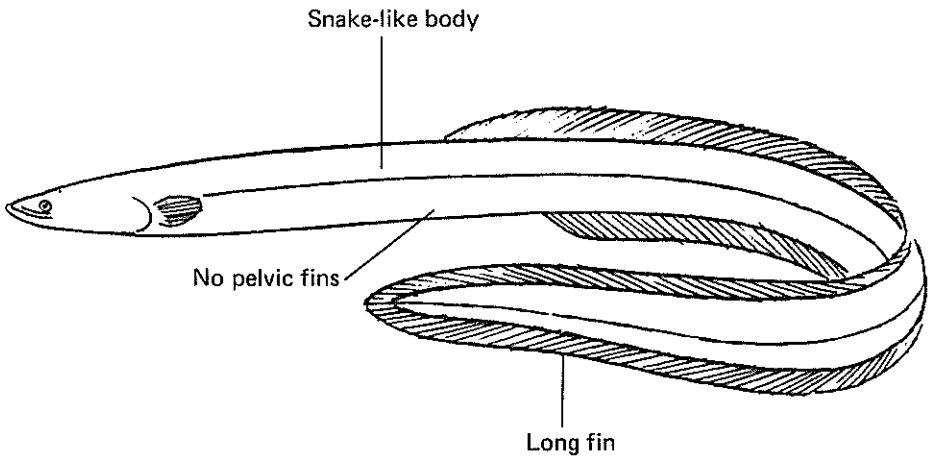
STATE THREATENED SPECIE — Return to water!

BOWFIN FAMILY



BOWFIN
(Amia calva)

EEL FAMILY



AMERICAN EEL
(Anguilla rostrata)

HERRING FAMILY

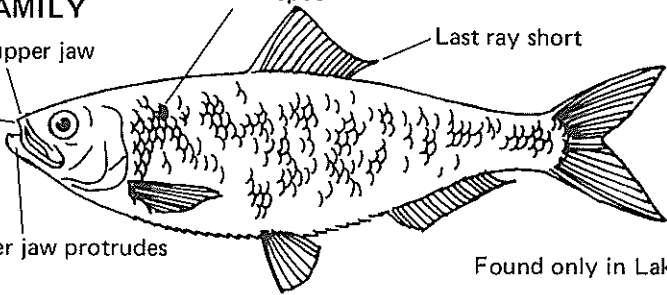
Deep notch in upper jaw

Snout sharp

Lower jaw protrudes

Dark spot

Last ray short



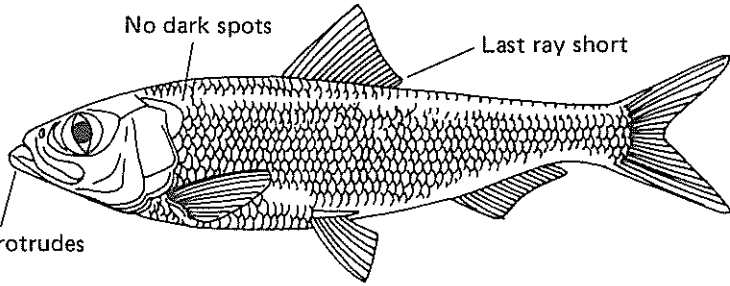
Found only in Lake Michigan

ALEWIFE
(Alosa pseudoharengus)

No dark spots

Last ray short

Lower jaw protrudes



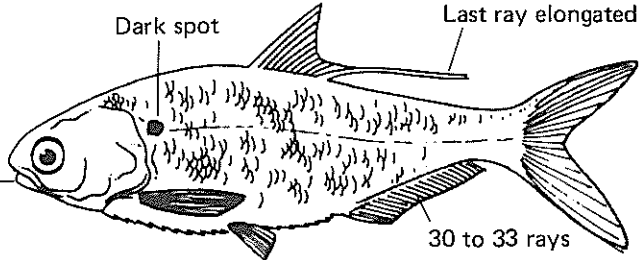
SKIPJACK HERRING
(Alosa chrysochloris)

Dark spot

Last ray elongated

Lower jaw does not protrude

30 to 33 rays



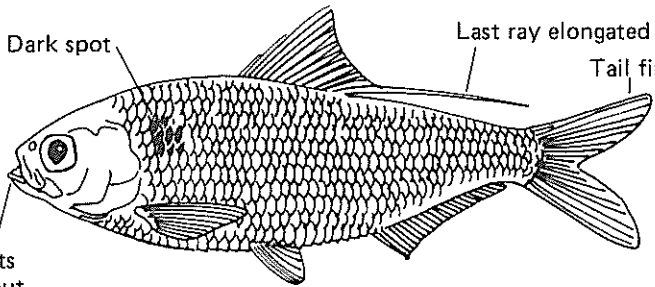
GIZZARD SHAD
(Dorosoma cepedianum)

Dark spot

Last ray elongated

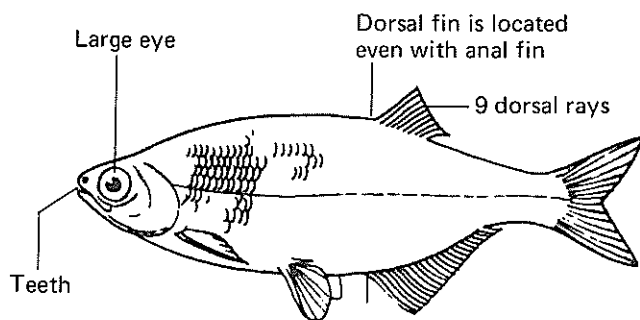
Tail fin yellow

Lower jaw projects beyond tip of snout

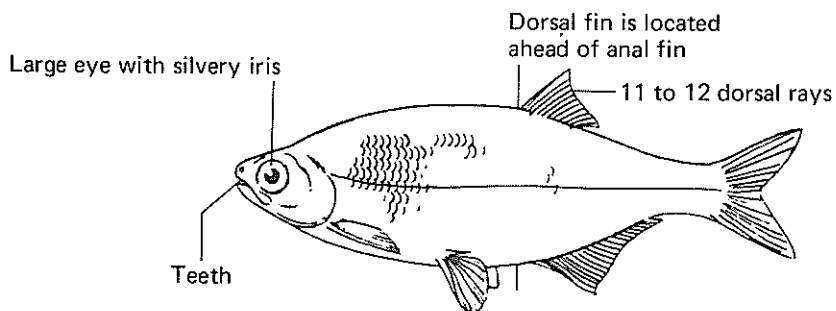


THREADFIN SHAD
(Dorosoma petenense)

MOONEYE FAMILY

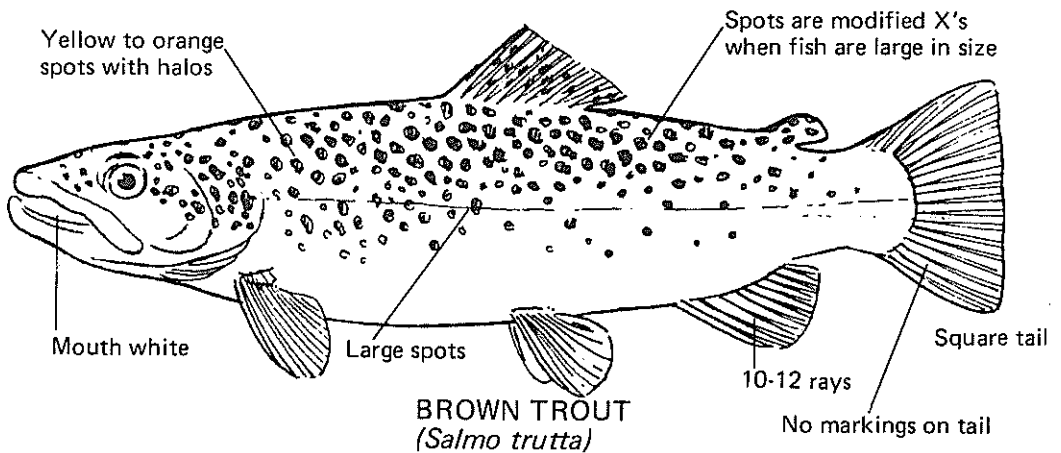
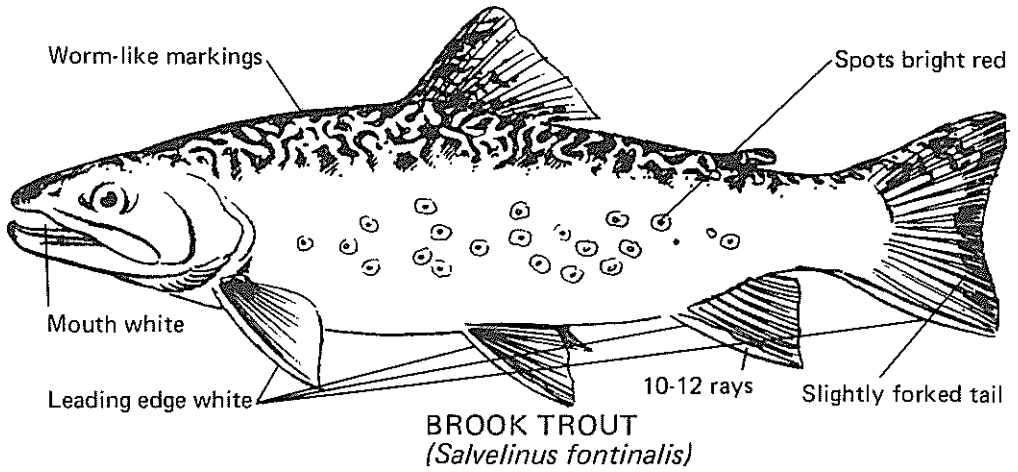
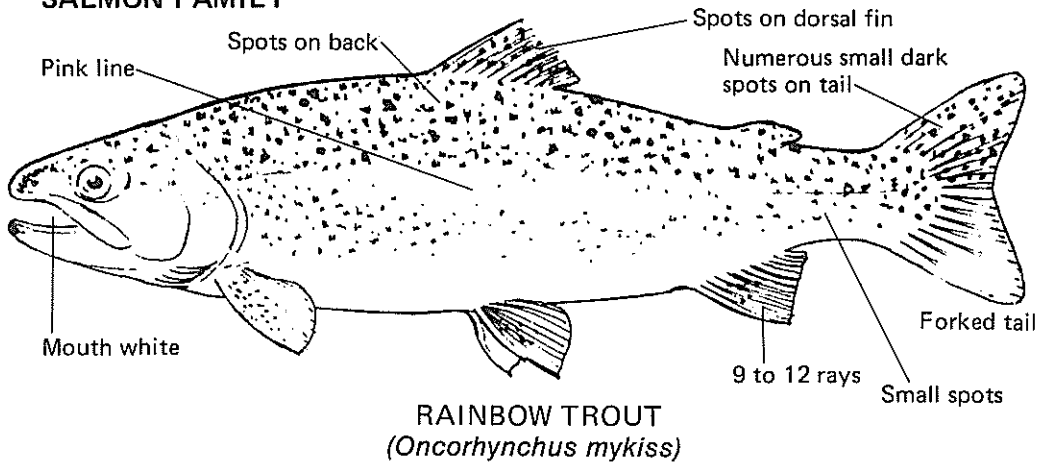


GOLDEYE
(Hiodon alosoides)

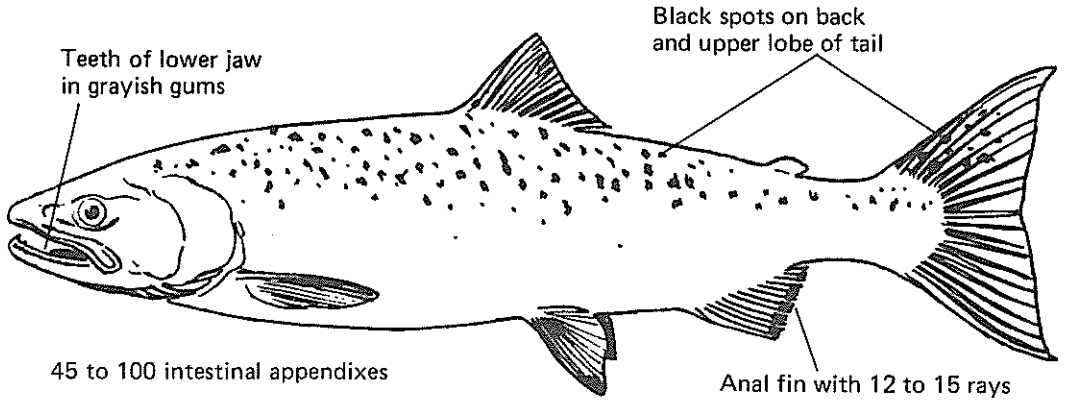


MOONEYE
(Hiodon tergisus)

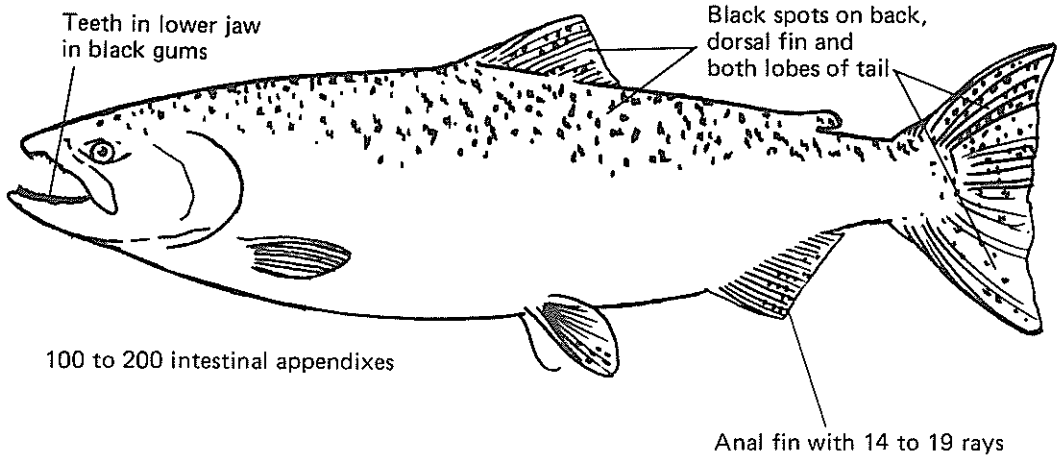
SALMON FAMILY



SALMON FAMILY

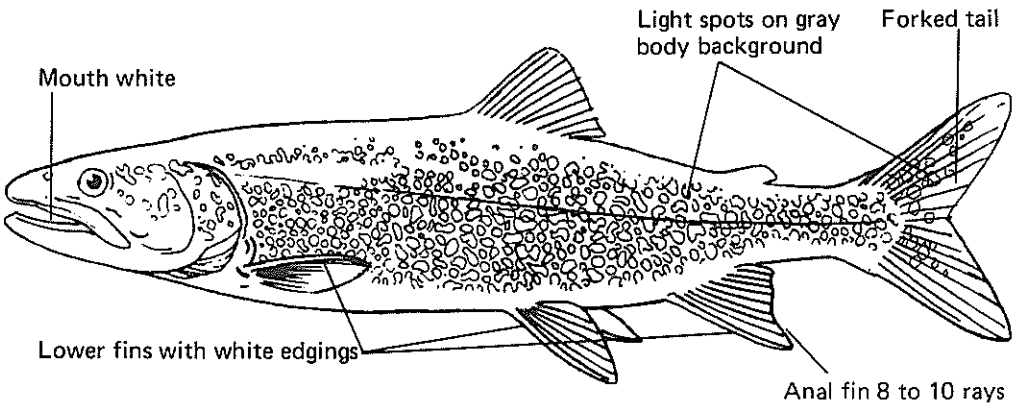


COHO SALMON
(*Oncorhynchus kisutch*)

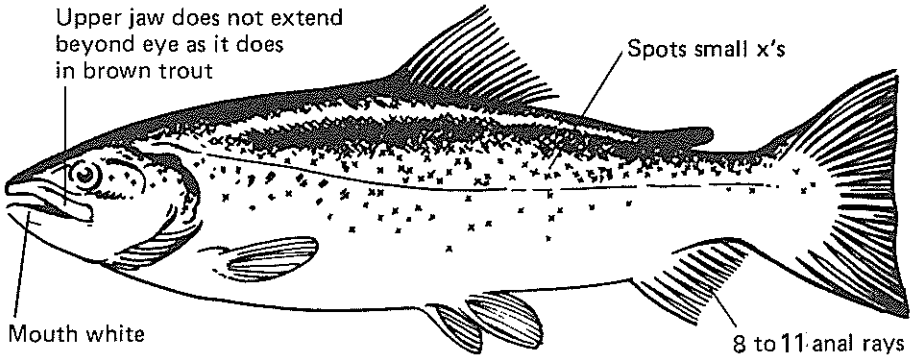


CHINOOK SALMON
(*Oncorhynchus tshawytscha*)

SALMON FAMILY

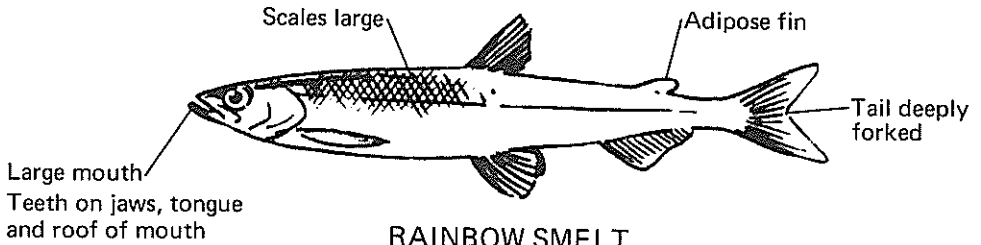


LAKE TROUT
(Salvelinus namaycush)



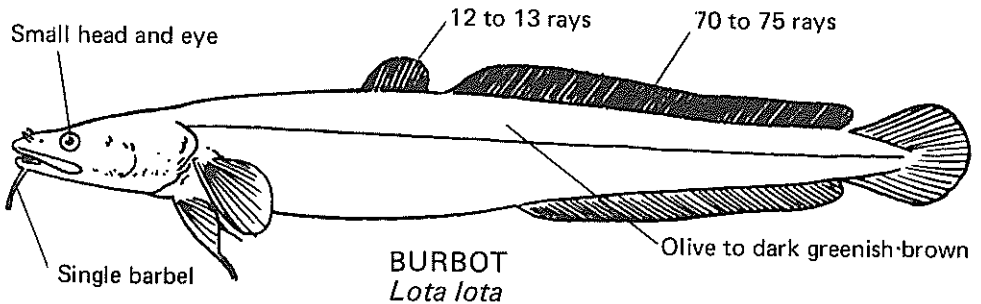
ATLANTIC SALMON
(Salmo salar)

SMELT FAMILY

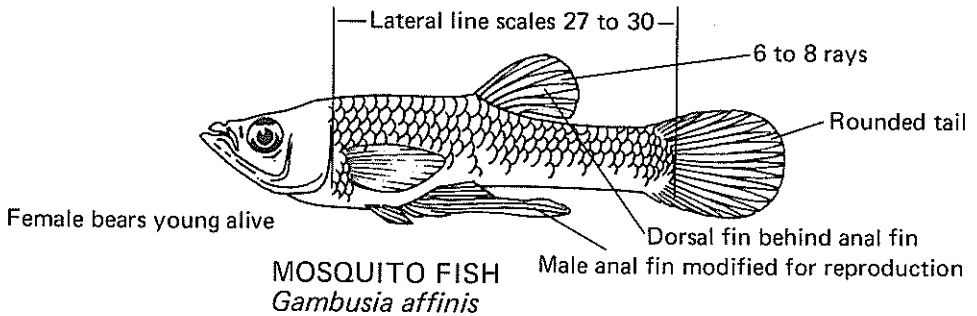


RAINBOW SMELT
(Osmerus mordax)

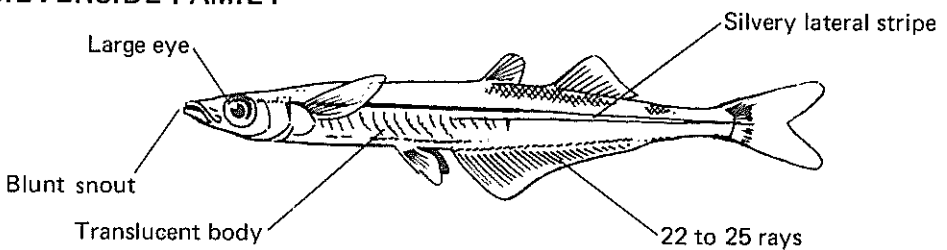
CODFISH FAMILY



LIVEBEARER FAMILY

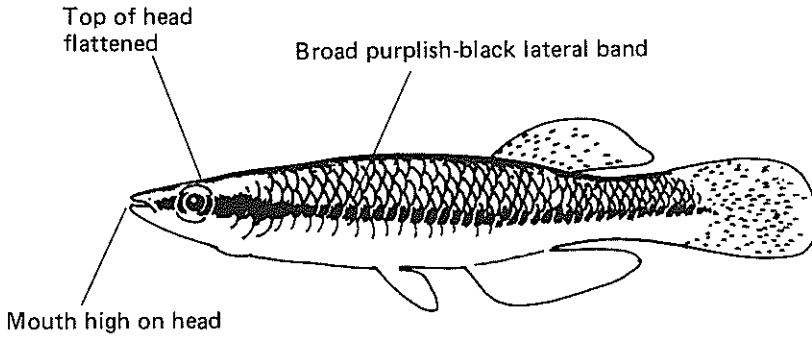


SILVERSIDE FAMILY



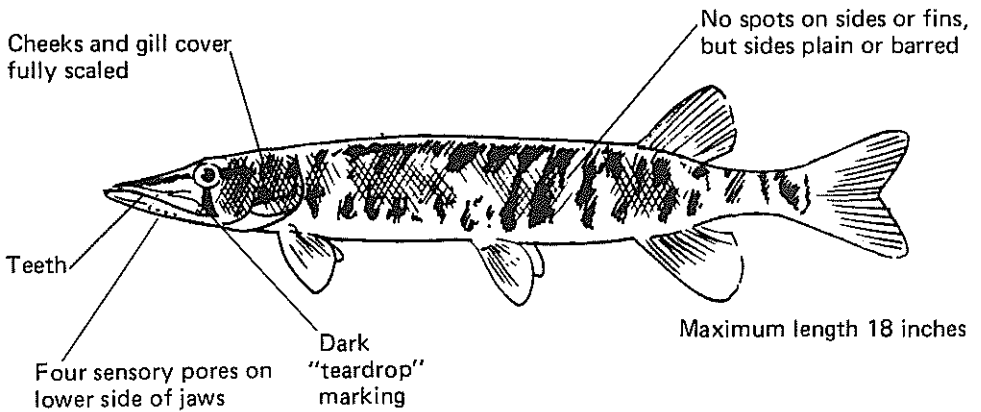
BROOK SILVERSIDE
Labidesthes sicculus

KILLIFISH FAMILY



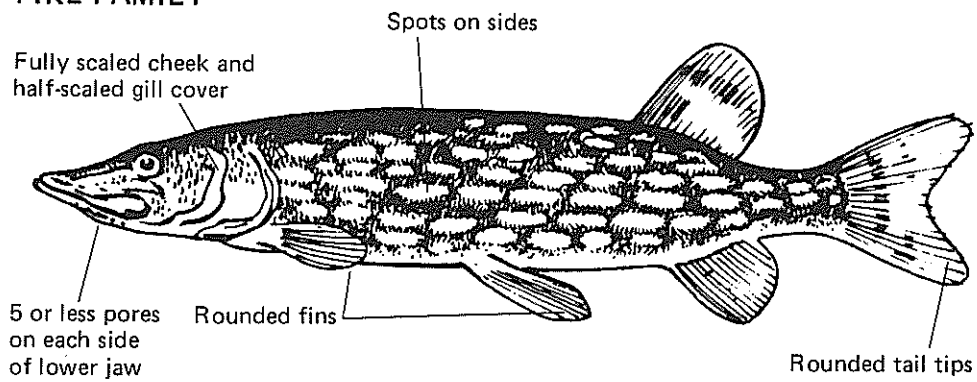
BLACKSTRIPE TOPMINNOW
(*Fundulus notatus*)

PIKE FAMILY

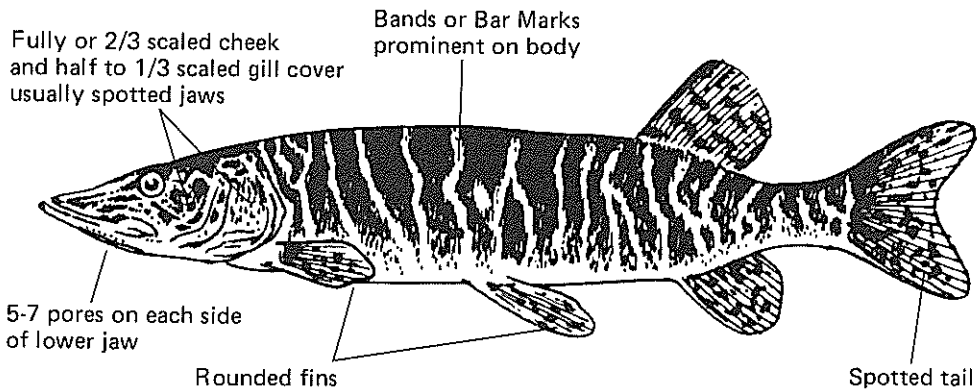


GRASS PICKEREL
(*Esox americanus*)

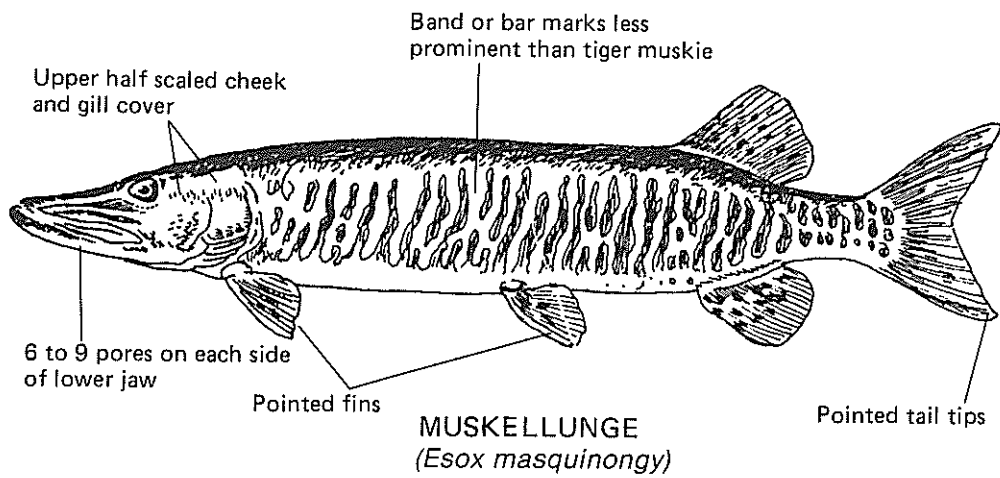
PIKE FAMILY



NORTHERN PIKE
(*Esox lucius*)

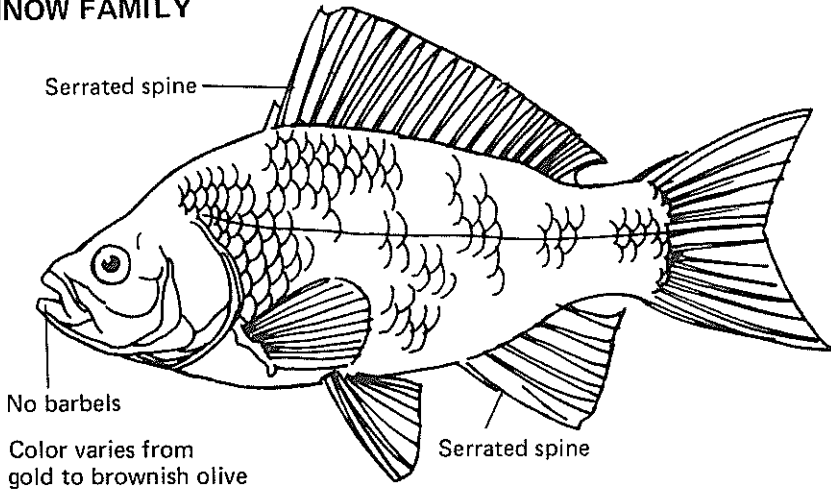


HYBRID (TIGER) MUSKELLUNGE



MUSKELLUNGE
(*Esox masquinongy*)

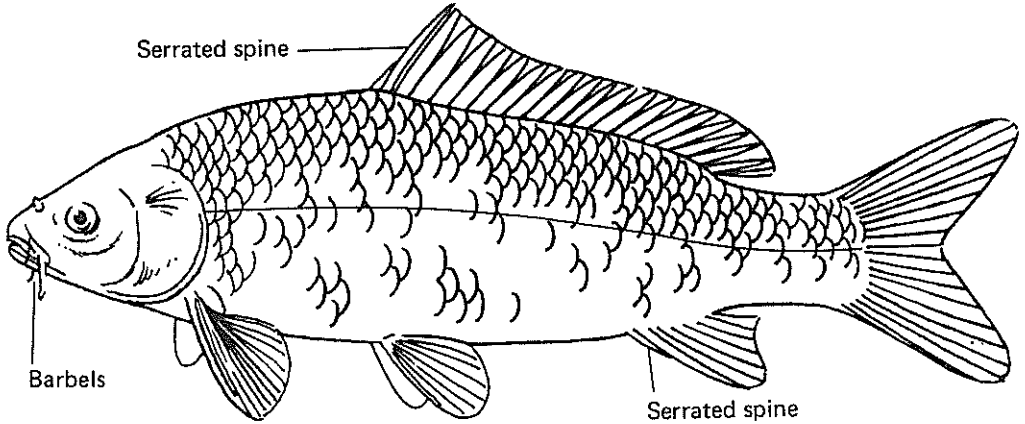
MINNOW FAMILY



No barbels

Color varies from gold to brownish olive

GOLDFISH
(Carassius auratus)

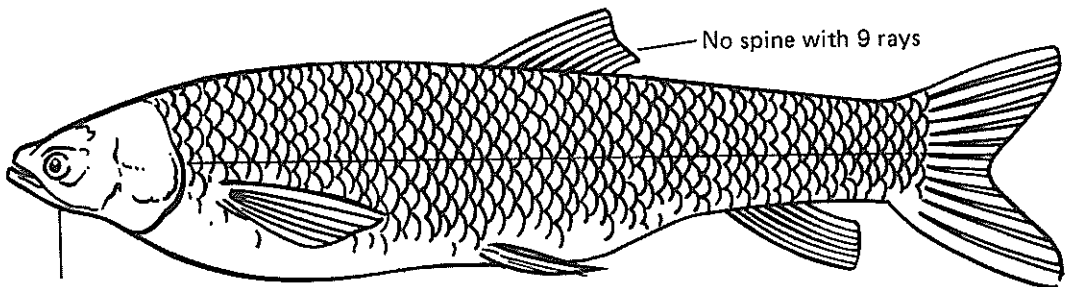


Serrated spine

Barbels

Serrated spine

CARP
(Cyprinus carpio)

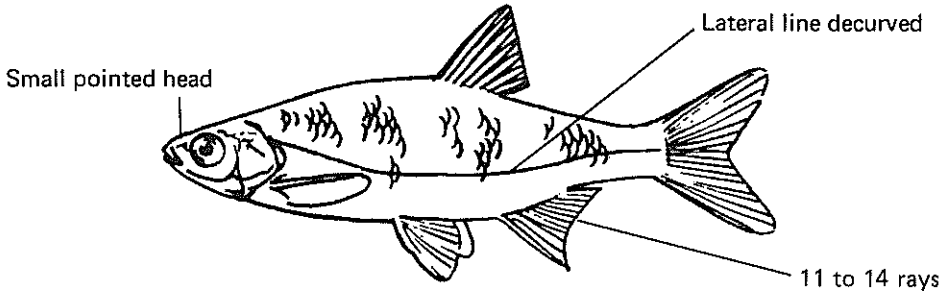


No spine with 9 rays

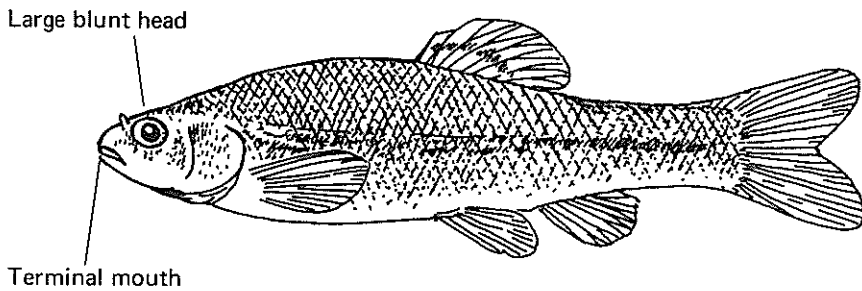
No barbels

WHITE AMUR (GRASS CARP)
(Ctenopharyngodon idella)

MINNOW FAMILY



GOLDEN SHINER
(Notemigonus crysoleucas)

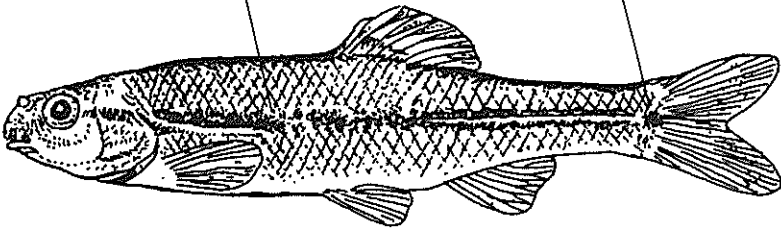


FATHEAD MINNOW
(Pimephales promelas)

MINNOW FAMILY

Black stripe from tip of snout to tail spot

Tail spot



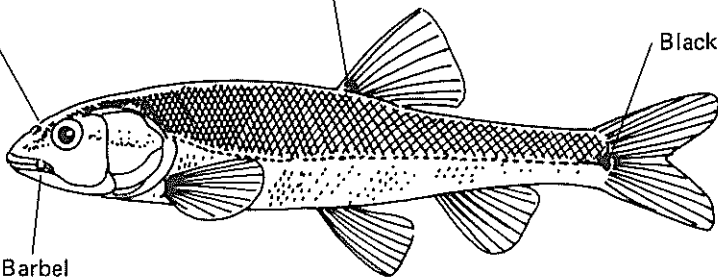
BLUNT NOSE MINNOW
(Pimephales notatus)

Large head
and mouth

Black spot

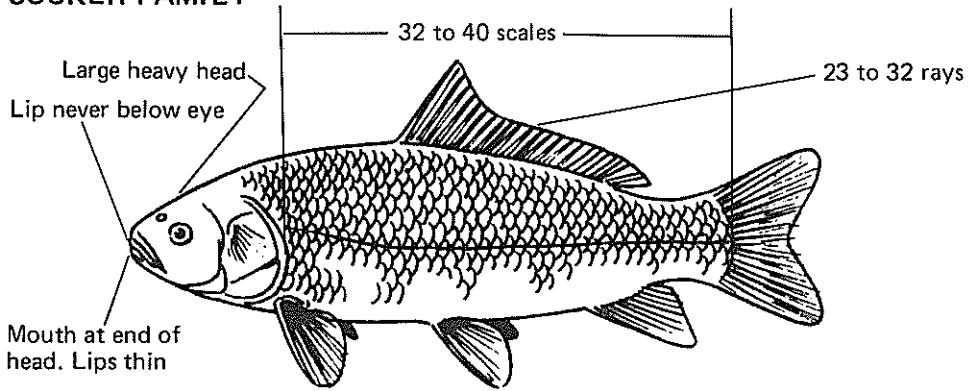
Black spot

Barbel

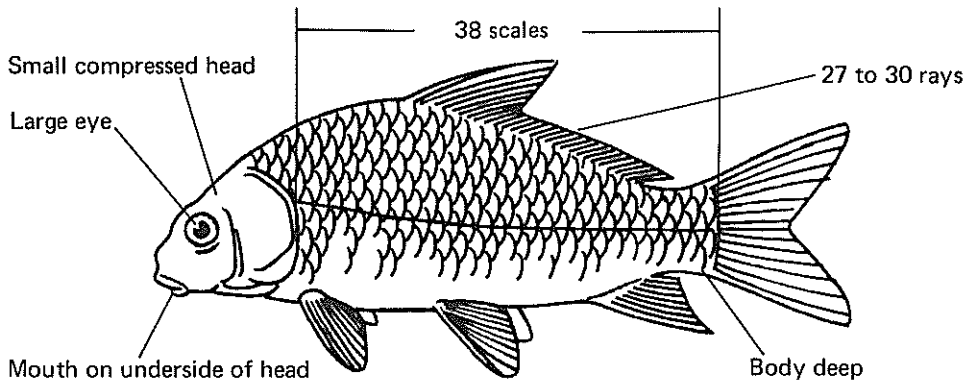


CREEK CHUB
(Semotilus atromaculatus)

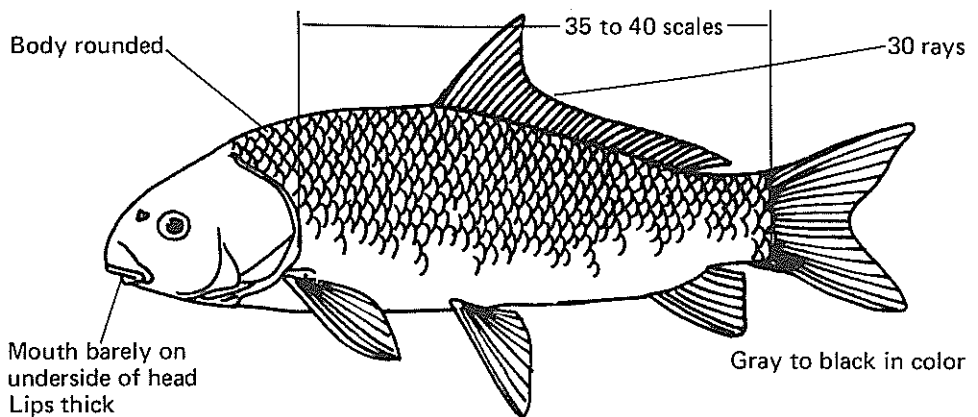
SUCKER FAMILY



BIGMOUTH BUFFALO
(Ictiobus cyprinellus)

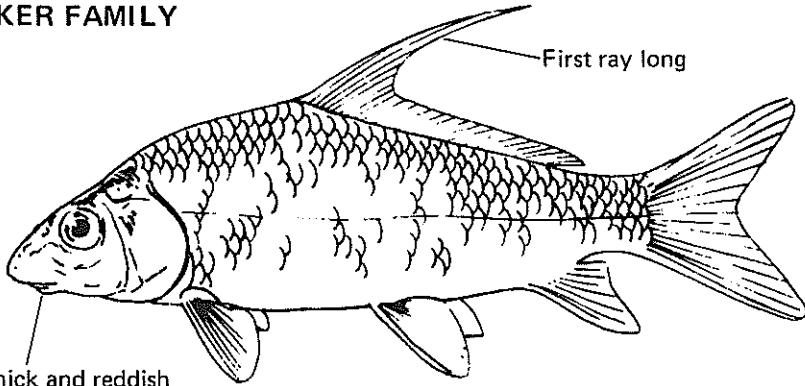


SMALLMOUTH BUFFALO
(Ictiobus bubalus)



BLACK BUFFALO
(Ictiobus niger)

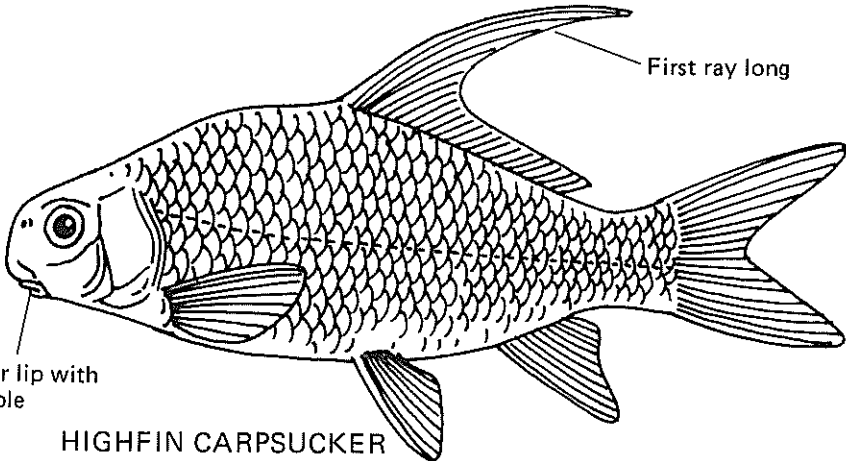
SUCKER FAMILY



First ray long

Lips thick and reddish
Lower lip
without a nipple

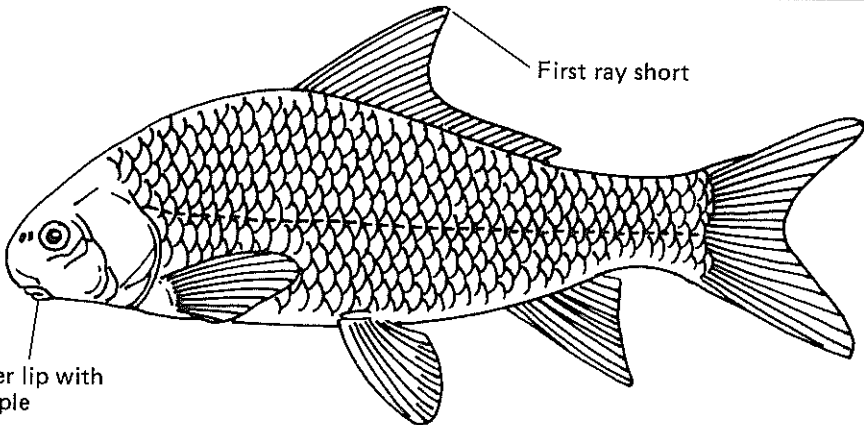
QUILLBACK CARPSUCKER
(Carpoides cyprinus)



First ray long

Lower lip with
a nipple

HIGHFIN CARPSUCKER
(Carpoides velifer)

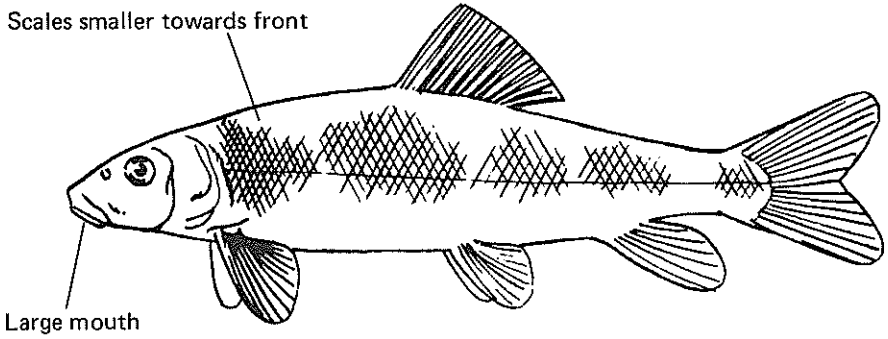


First ray short

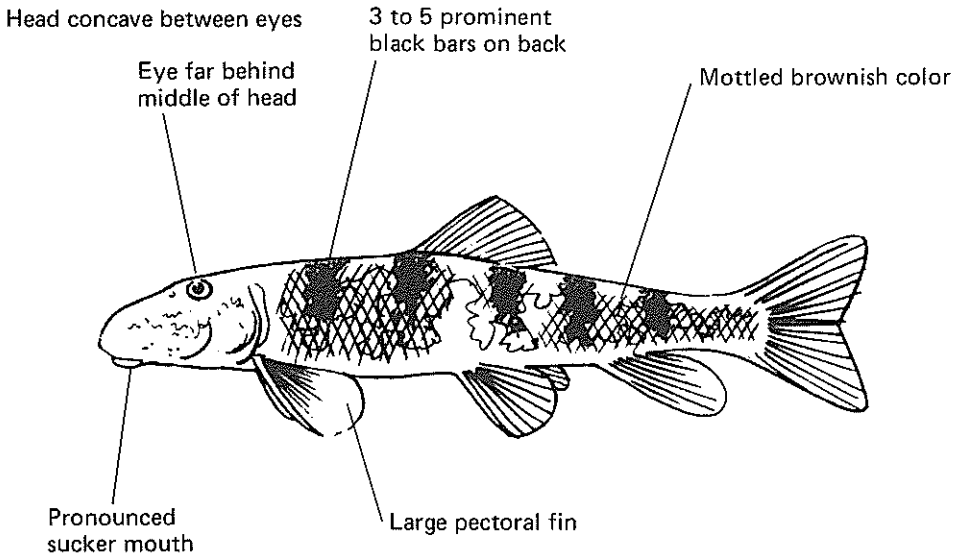
Lower lip with
a nipple

RIVER CARPSUCKER
(Carpoides carpio)

SUCKER FAMILY

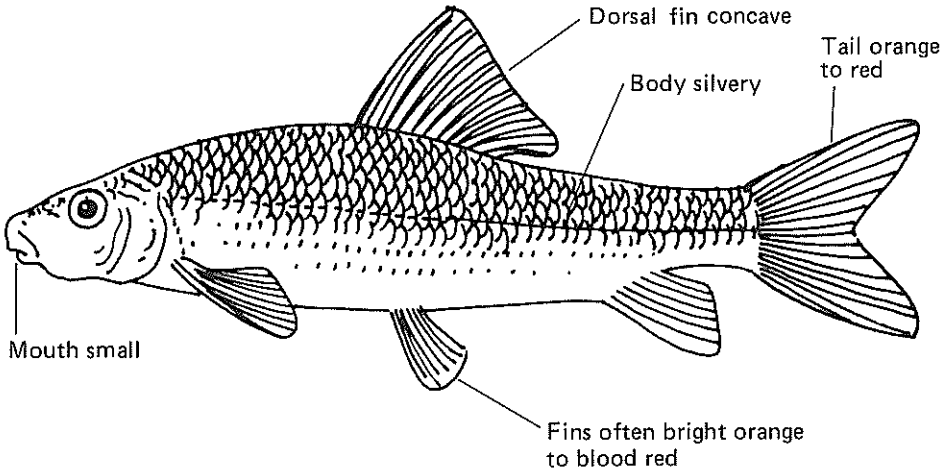


WHITE SUCKER
(Catostomus commersoni)

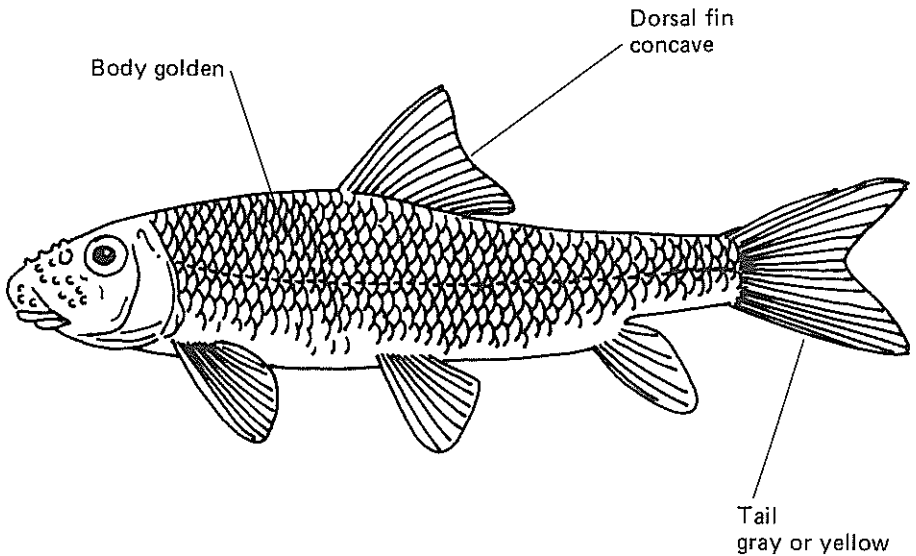


HOG SUCKER
(Hypentelium nigricans)

SUCKER FAMILY

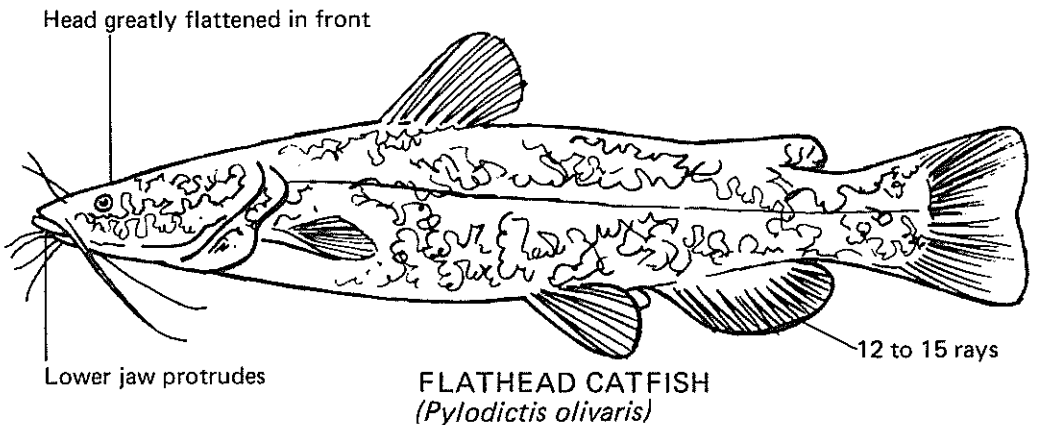
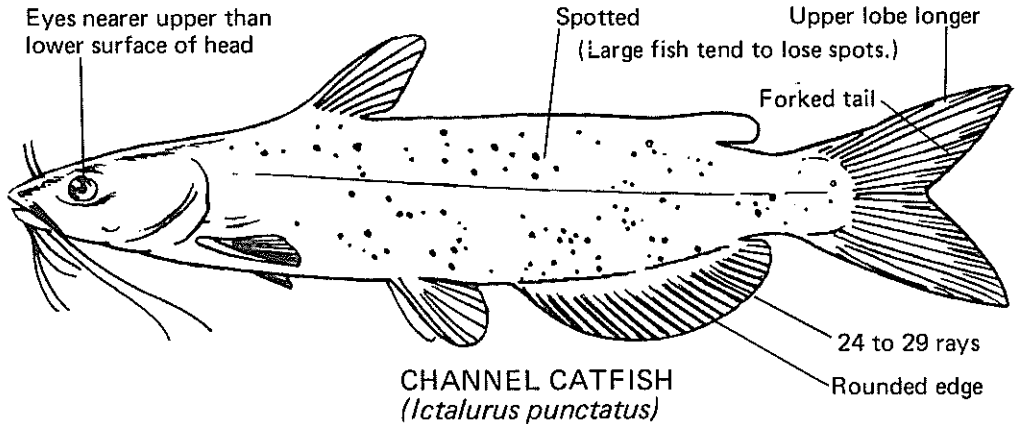
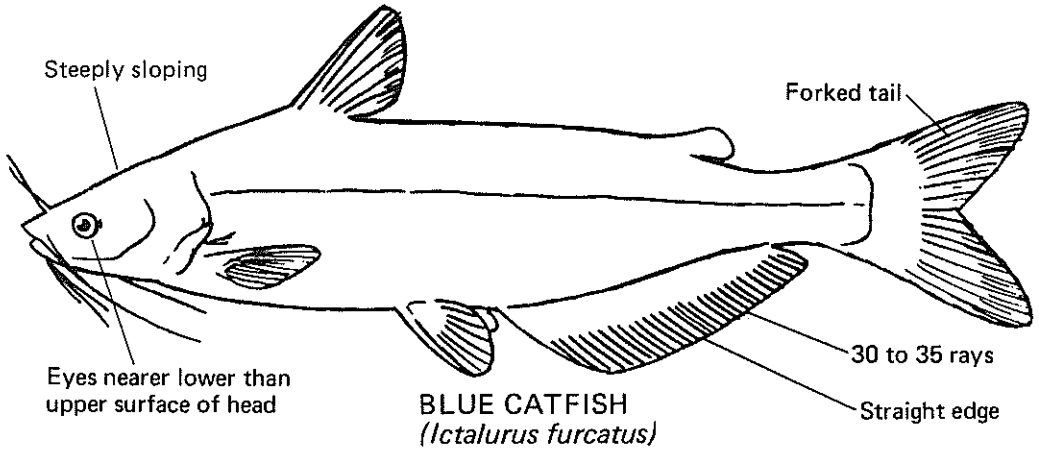


SHORTHEAD REDHORSE
(*Moxostoma macrolepidotum*)

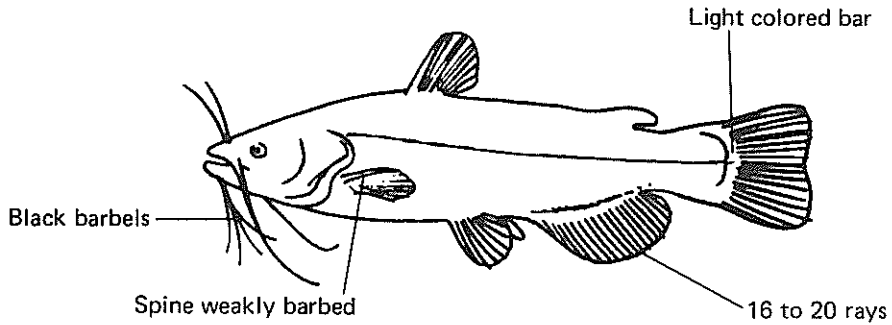


GOLDEN REDHORSE
(*Moxostoma erythrurum*)

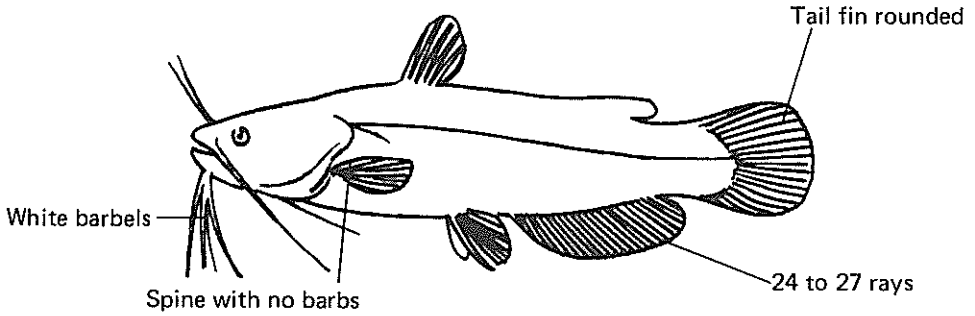
CATFISH FAMILY



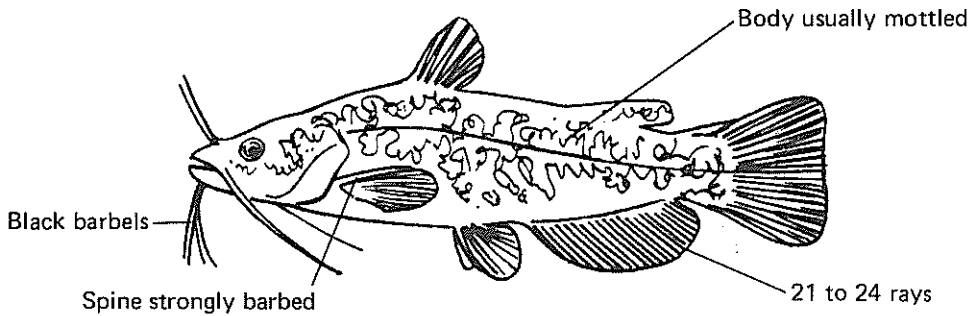
CATFISH FAMILY



BLACK BULLHEAD
(Ameiurus melas)

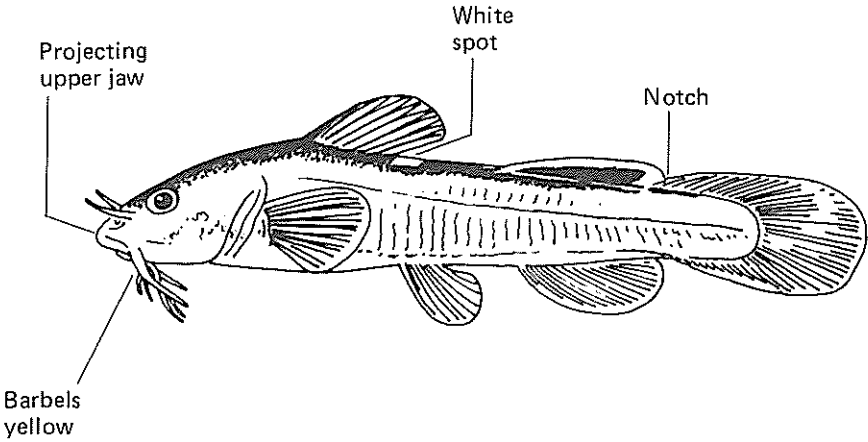


YELLOW BULLHEAD
(Ameiurus natalis)



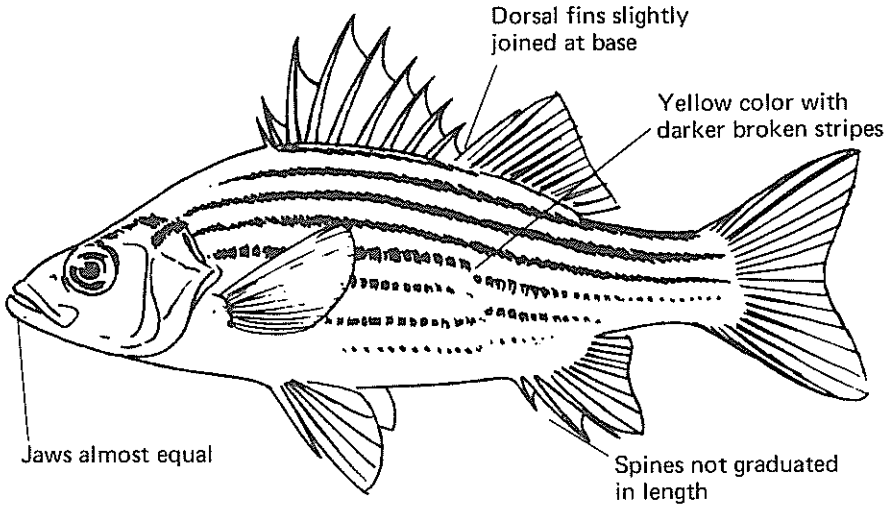
BROWN BULLHEAD
(Ameiurus nebulosus)

CATFISH FAMILY



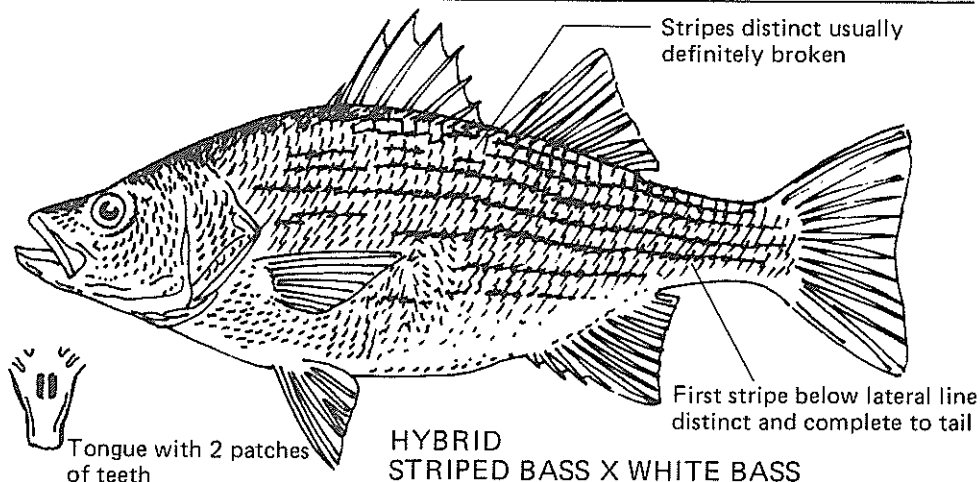
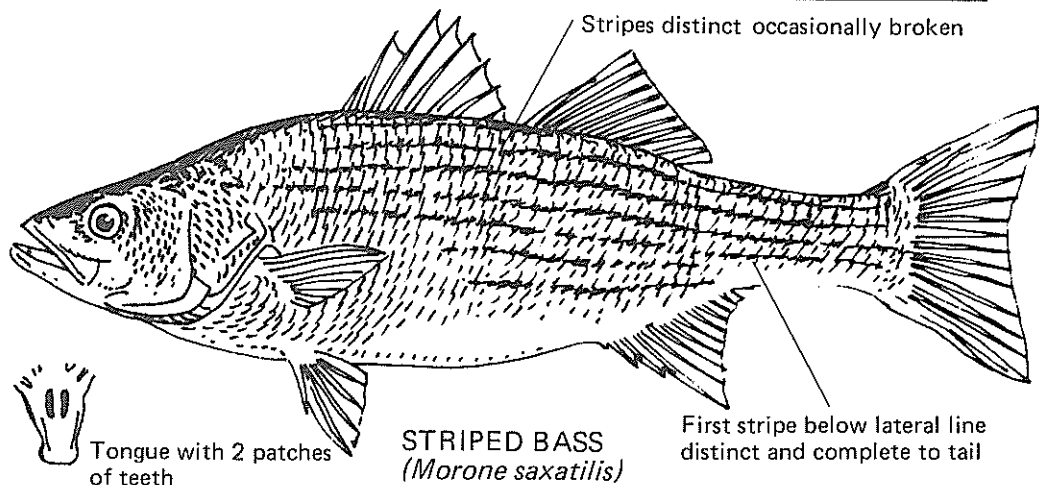
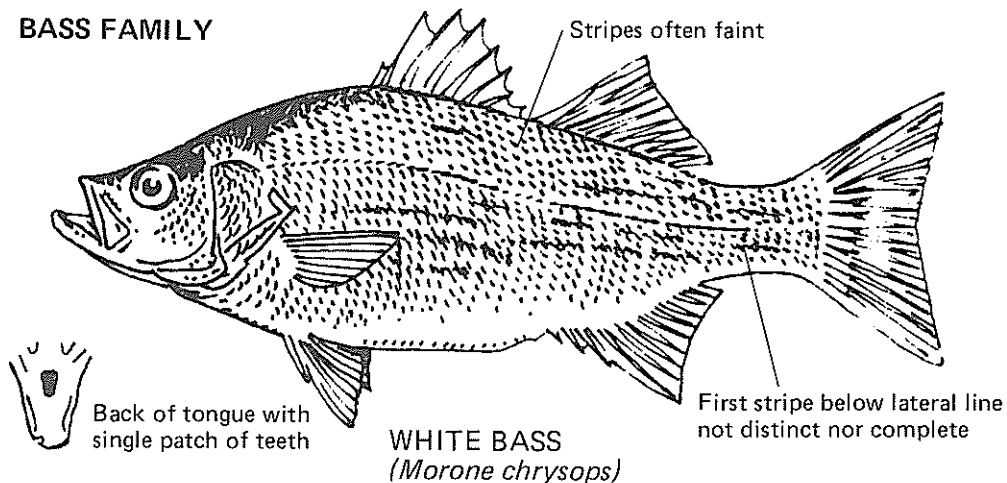
STONECAT
(*Noturus flavus*)

BASS FAMILY

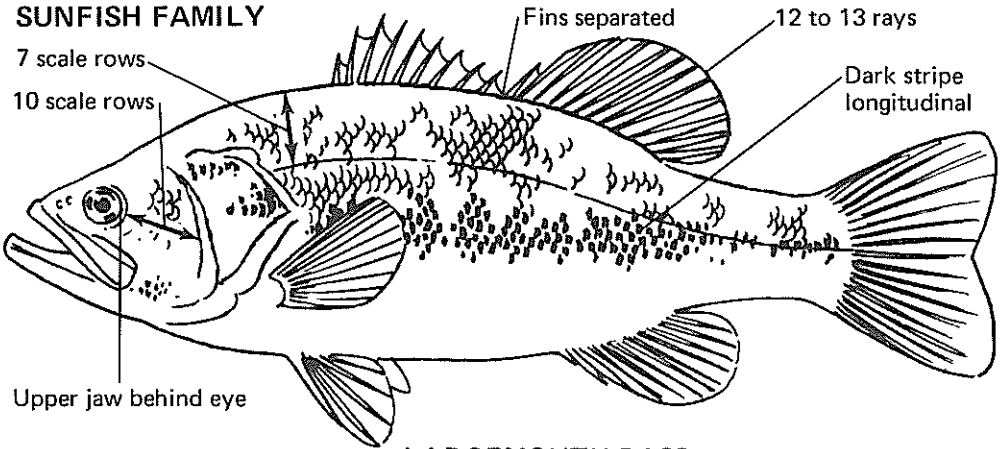


YELLOW BASS
(*Morone mississippiensis*)

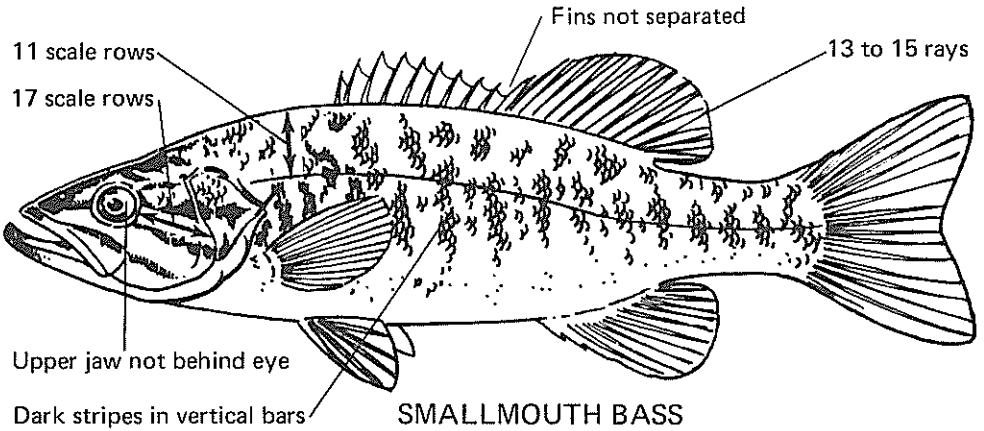
BASS FAMILY



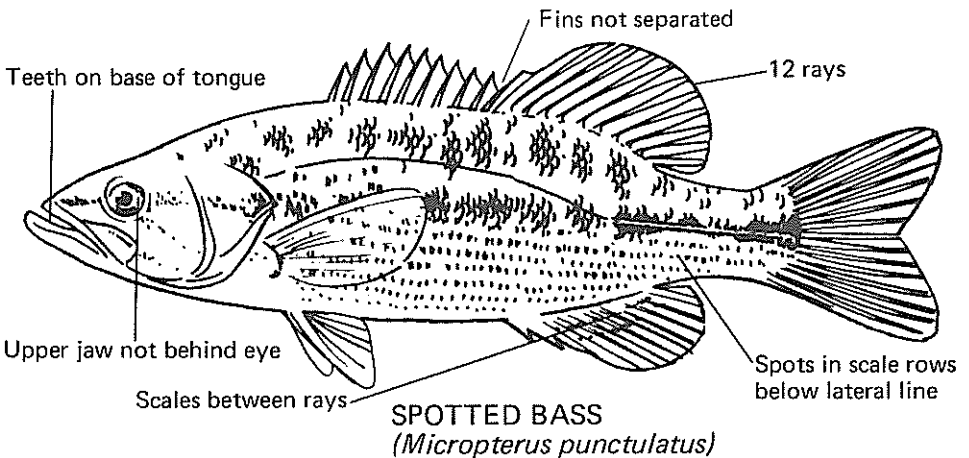
SUNFISH FAMILY



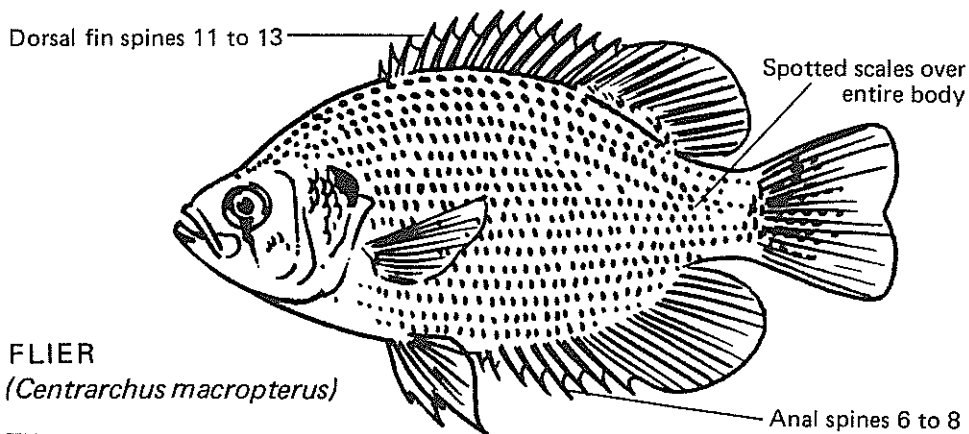
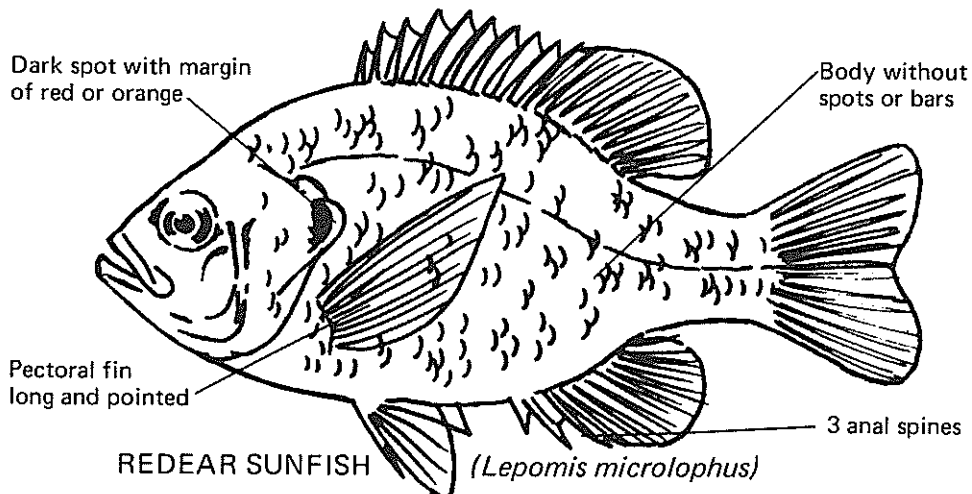
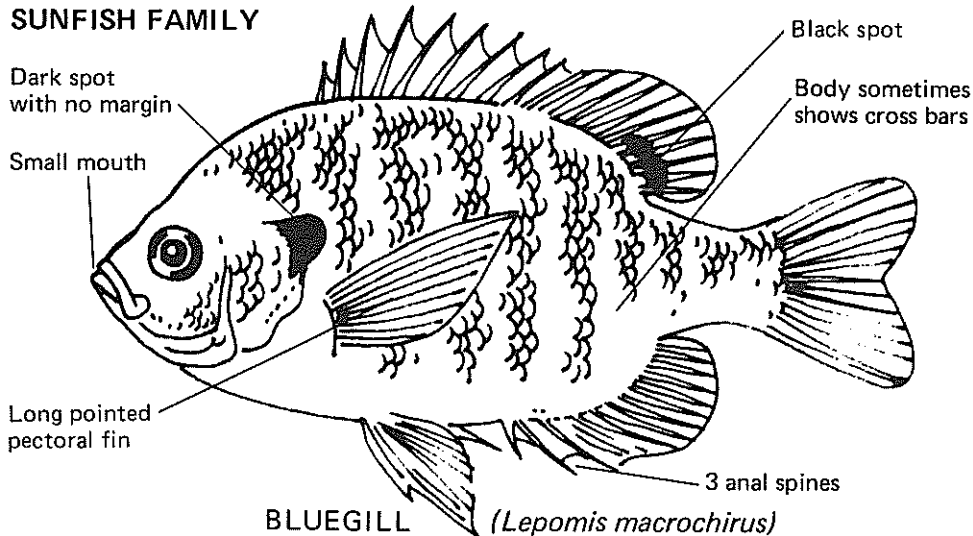
LARGEMOUTH BASS
(Micropterus salmoides)



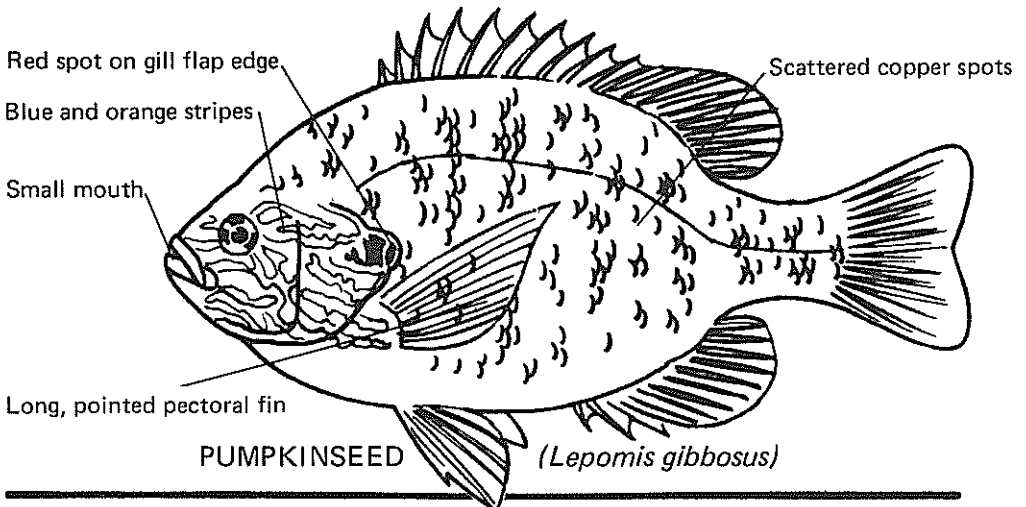
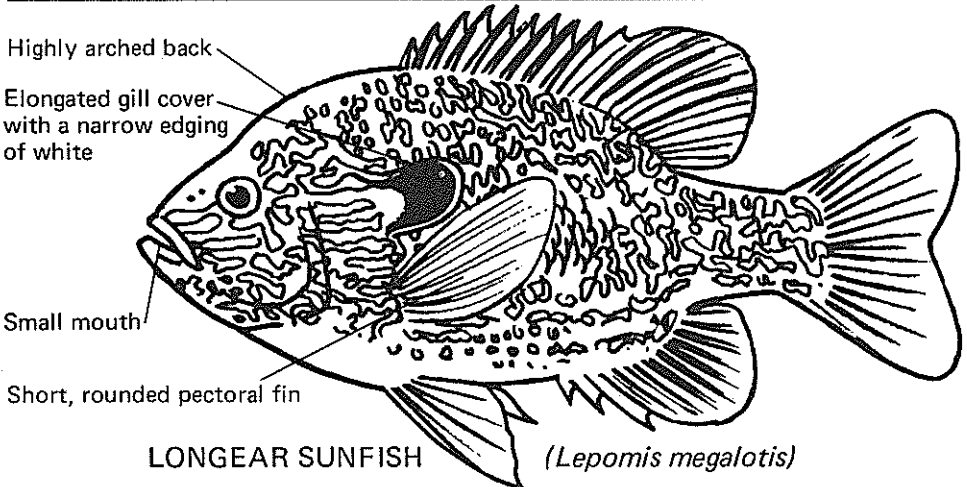
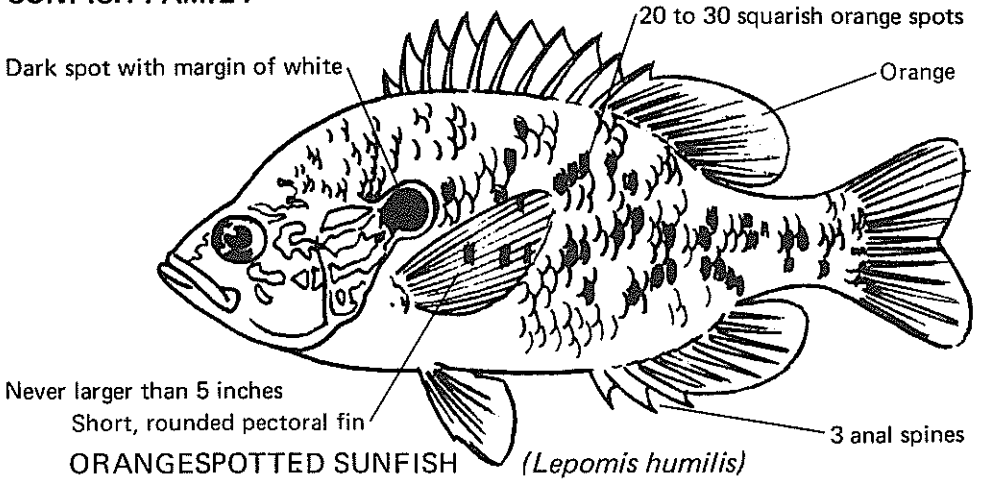
SMALLMOUTH BASS
(Micropterus dolomieu)



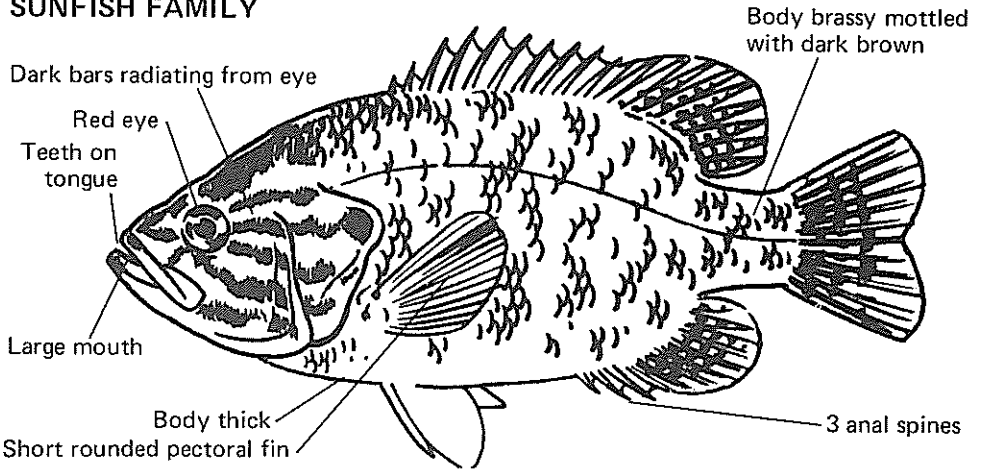
SUNFISH FAMILY



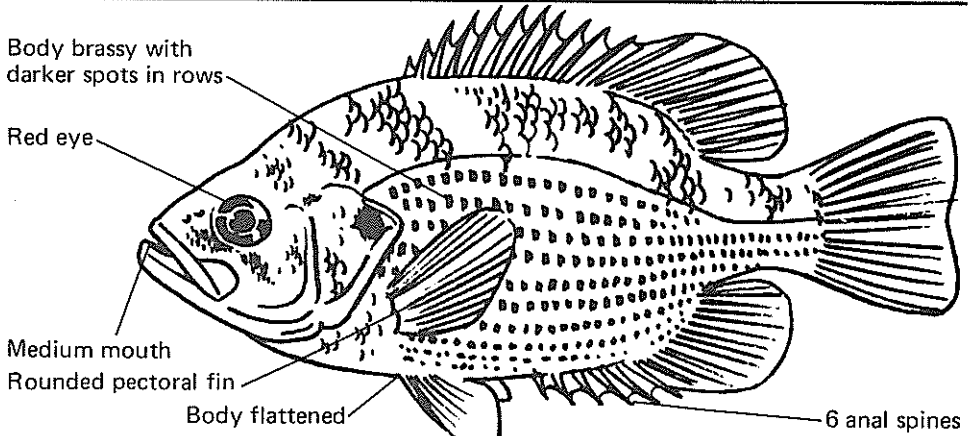
SUNFISH FAMILY



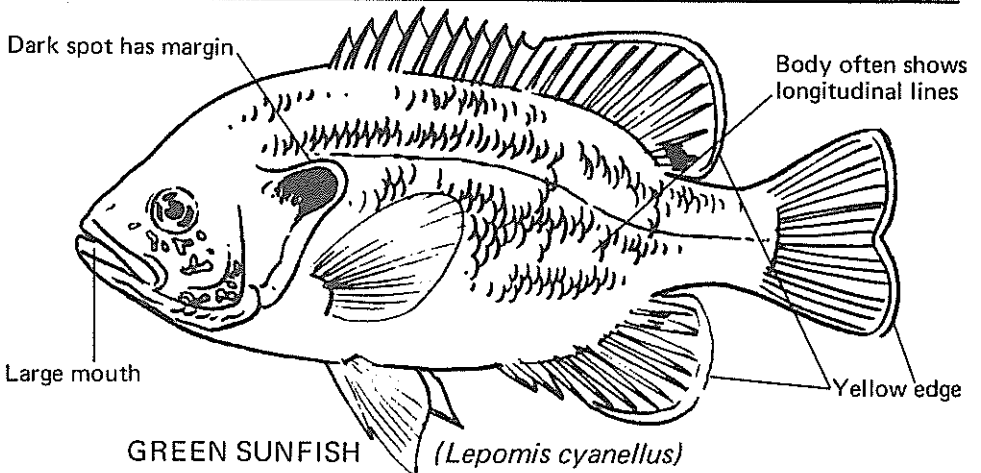
SUNFISH FAMILY



WARMOUTH (*Lepomis gulosus*)

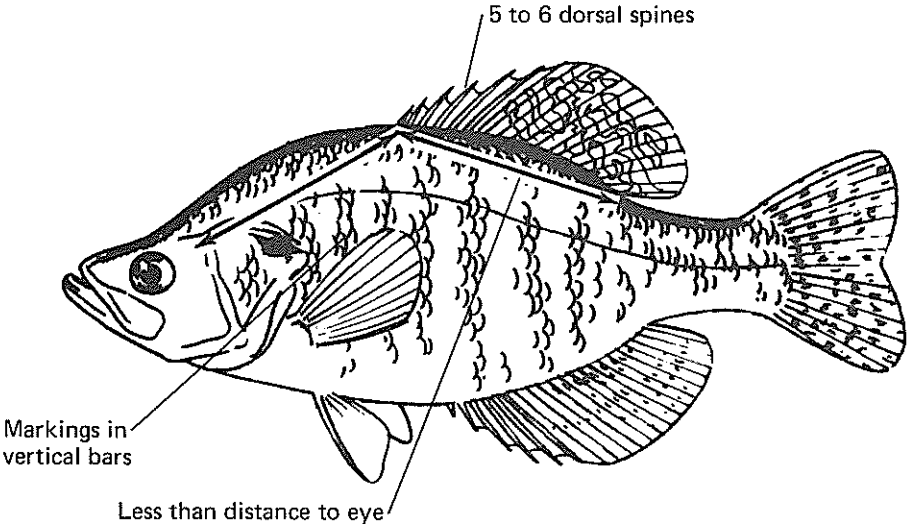


ROCK BASS (*Ambloplites rupestris*)

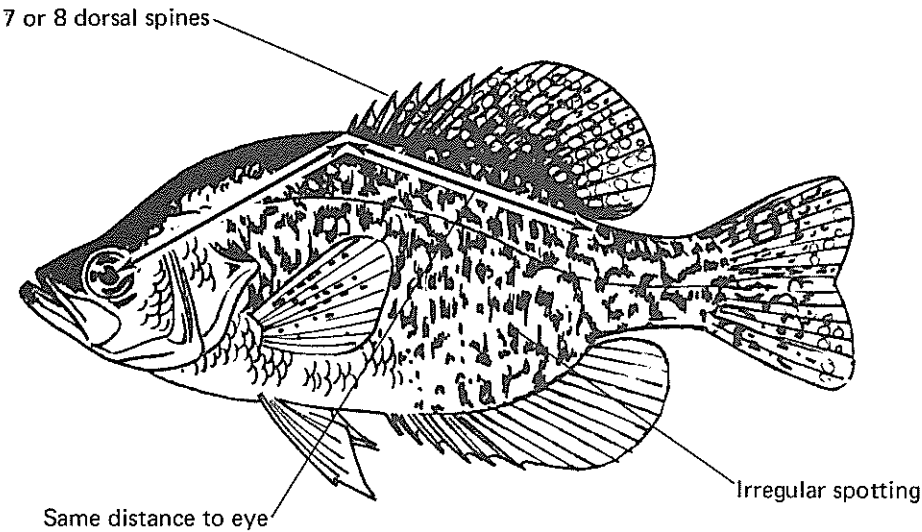


GREEN SUNFISH (*Lepomis cyanellus*)

SUNFISH FAMILY

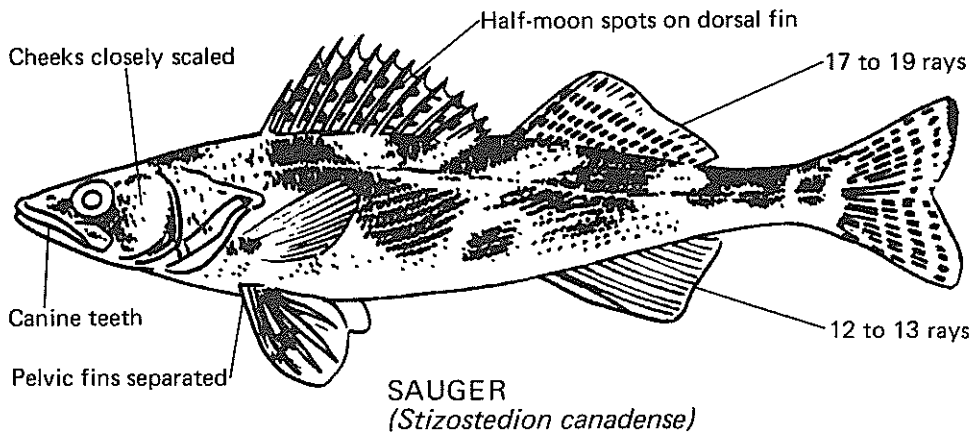
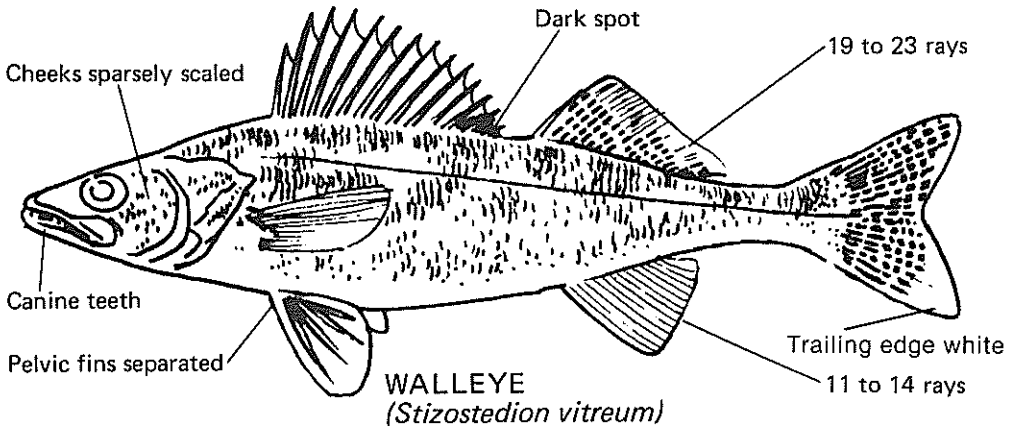
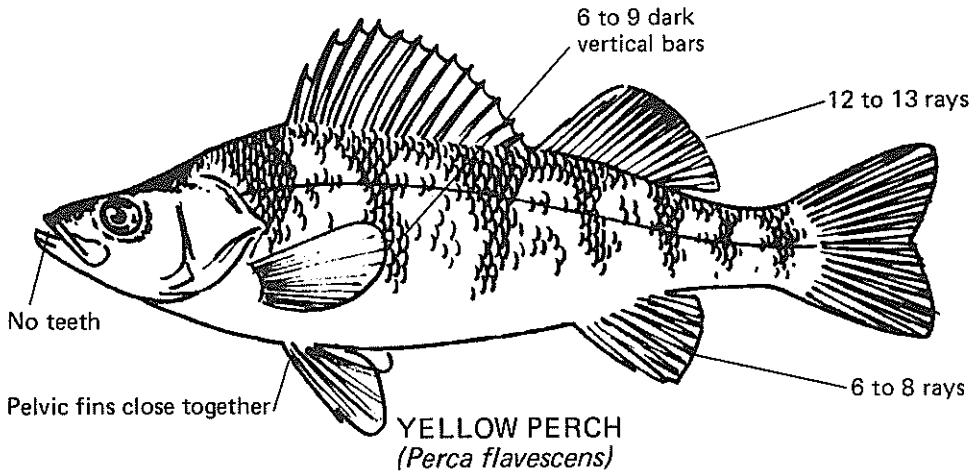


WHITE CRAPPIE
(Pomoxis annularis)

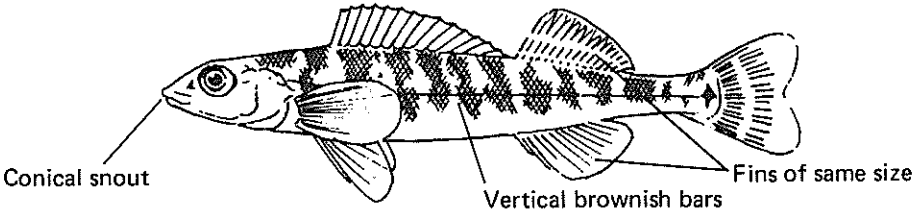


BLACK CRAPPIE
(Pomoxis nigromaculatus)

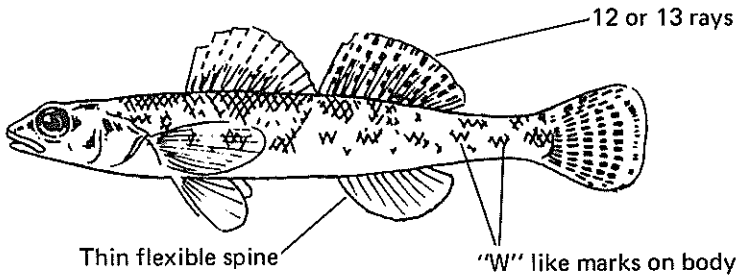
PERCH FAMILY



PERCH FAMILY

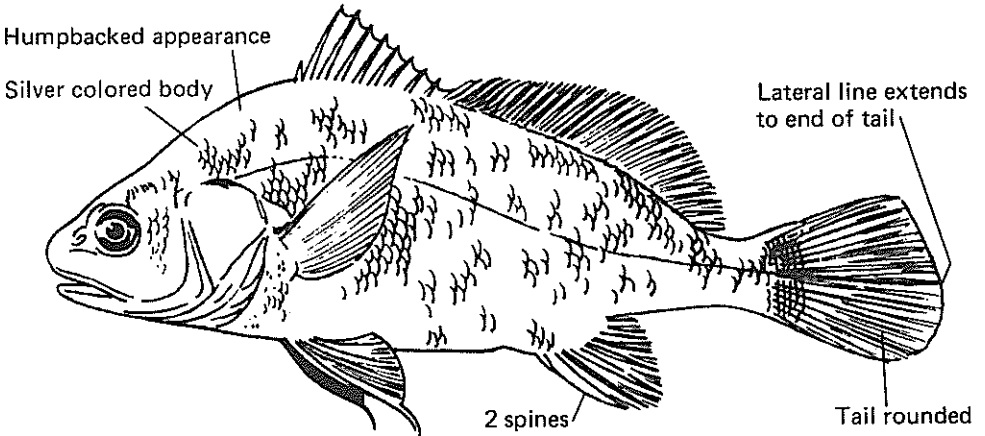


LOGPERCH
(Percina caprodes)



JOHNNY DARTER Small fish (1-2")
(Etheostoma nigrum)

DRUM FAMILY



FRESHWATER DRUM
(Aplodinotus grunniens)

FISH FACTS CHART*

Species of Fish	Reproductive Age (or Length)	Number of Eggs Per Female (Range)		No. Days to Hatch	Time of Spawning
		Min.	Max.		
1 SILVER LAMPREY	—	12,000 - 65,000		—	Spring
2 PADDLEFISH	7 Yrs.	—		—	Spring
3 SHOVELNOSE STURGEON	20" - 25"	200,000		—	April - June
4 BOWFIN	—	23,600 - 64,000		8 - 10	Spring
5 LONGNOSE GAR	—	46,800 - 77,000		—	Spring
6 DRUM	5 Yrs.	200,000 - 400,000		—	Spring
7 GIZZARD SHAD	2 - 3 Yrs.	50,000		—	Spring
8 RAINBOW TROUT	3 Yrs.	500 - 9,000		30 - 100	Fall - Spring
9 BROOK TROUT	2 Yrs.	25 - 5,600		50 - 120	September - November
10 BROWN TROUT	3 Yrs.	200 - 6,000		48 - 52	October - December
11 BIGMOUTH BUFFALO	3 Yrs.	400,000		8 - 14	Spring
12 WHITE SUCKER	6"	26,700 - 140,000		14 - 21	April - May
13 CARP	12" - 15"	790,000 - 2,000,000		12	Spring
14 GOLDEN SHINER	1 Yr.	200,000		10 - 20	May - July
15 CHANNEL CATFISH	12" - 15"	2,500 - 70,000		6 - 10	Spring
16 FLATHEAD CATFISH	15" - 18"	—		6 - 10	Spring
17 BLACK BULLHEAD	1 - 3 Yrs.	1,600 - 6,800		7 - 10	Spring
18 YELLOW BULLHEAD	1 - 2 Yrs.	1,600 - 6,600		5 - 10	June - July
19 BROWN BULLHEAD	1 - 2 Yrs.	2,000 - 13,800		5 - 8	April - May
20 AMERICAN EEL	—	9,000,000 - 10,700,000		2 - 3 Months	—
21 NORTHERN PIKE	2 - 3 Yrs.	2,000 - 600,000		12 - 14	Spring
22 GRASS PICKEREL	—	15,700		12 - 15	Spring
23 MUSKELLUNGE	3 - 4 Yrs.	10,000 - 265,000		12 - 15	Spring
24 WHITE BASS	2 - 3 Yrs.	18,000 - 970,000		2 - 5	Spring
25 YELLOW BASS	2 - 3 Yrs.	—		2 - 5	Spring
26 YELLOW PERCH	1 - 2 Yrs.	5,800 - 48,000		12 - 21	Spring
27 WALLEYE	3 Yrs.	35,300 - 615,000		12 - 18	Spring
28 SAUGER	3 - 4 Yrs.	32,000 - 83,000		12 - 18	April - May
29 LARGEMOUTH BASS	2 Yrs.	2,000 - 100,000		3 - 6	Spring
30 SMALLMOUTH BASS	2 Yrs.	2,000 - 20,800		3 - 5	Spring
31 BLUEGILL	1 Yr.	2,300 - 67,000		5 - 10	May - August
32 ORANGE SPOTTED SUNFISH	1 Yr.	50 - 4,700		5 - 10	May - August
33 PUMPKINSEED SUNFISH	1 - 2 Yrs.	600 - 2,900		5 - 10	May - August
34 ROCK BASS	1 - 2 Yrs.	2,000 - 11,000		5 - 10	May - June
35 WHITE CRAPPIE	2 - 3 Yrs.	29,000 - 147,000		5 - 8	Spring
36 BLACK CRAPPIE	2 - 3 Yrs.	11,000 - 180,000		5 - 8	Spring
37 ATLANTIC SALMON	3 Yrs.	2,000		90 - 120	Fall
38 CHINOOK SALMON	4 - 5 yrs.	3,000 - 4,000		50 - 90	Fall
39 COHO SALMON	3 - 4 Yrs.	3,000 - 4,000		35 - 90	Fall
40 LAKE TROUT	5 - 7 Yrs.	6,000		120 - 150	Winter
41 STRIPED BASS	4 Yrs.	1,000,000		2	Spring

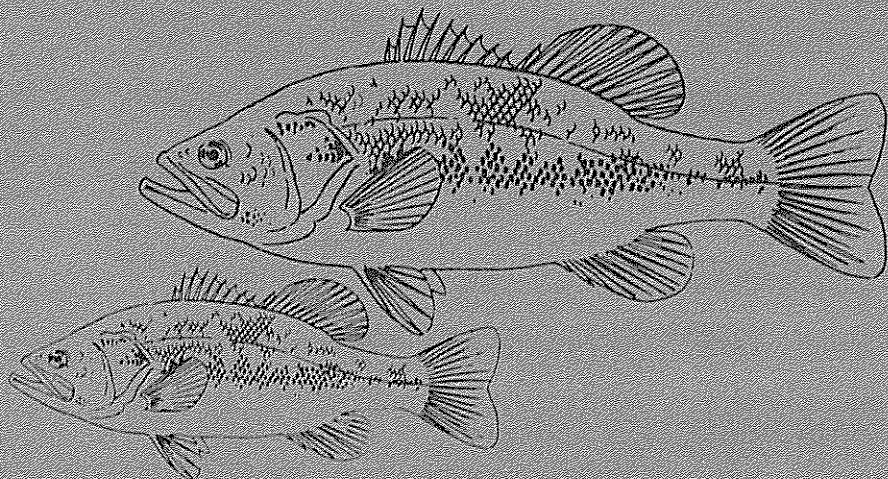
*The figures given here will vary according to climate, environment, and individual fish.
 **Maximum sizes are not for Illinois but nationwide.

Type of Reproduction	Average Life Span (Years)	Average Size (Length or Weight)	Maximum Size** (Length or Weight)	Principal Type of Food Eaten	Most Suitable Habitat	
Eggs Scattered	5 Yrs.	8" - 16"	16"	Parasitic	Streams and Rivers	1
Eggs Scattered Over Sand Bottoms	—	2 Lbs.	200 Lbs.	Plankton	Rivers	2
—	—	1½ - 2 Lbs.	8 Lbs.	Insect Larvae	Rivers	3
Nest — Mud Bottom	—	2 Lbs.	16 Lbs.	Fish	Sluggish Waters	4
Eggs Scattered on Weeds	—	2 - 3 Ft.	50 Lbs.	Fish	Rivers & Lakes	5
Eggs Scattered	7 Yrs.	1 Lb.	60 Lbs.	Insects & Molluscs	Rivers & Lakes	6
Eggs Scattered	3 Yrs.	8" - 12"	4 Lbs.	Plankton	Rivers & Lakes	7
Eggs Buried in Gravel	6 Yrs.	1 Lb. 5 lbs.	42 Lbs.	Insects	Streams Lake Michigan	8
Eggs Buried in Gravel	4 Yrs.	1 Lb.	14½ Lbs.	Insects	Cold Clear Streams	9
Eggs Buried in Gravel	6 Yrs.	1 Lb. 3 lbs.	40 Lbs.	Insects	Streams Lake Michigan	10
Eggs Scattered	7 - 8 Yrs.	2½ Lbs.	90 Lbs.	Plankton	Rivers & Lakes	11
Eggs Scattered Over Rocks	7 - 8 Yrs.	15"	5 Lbs.	Insect Larvae	Rivers & Lakes	12
Eggs Scattered	7 - 8 Yrs.	2 - 5 Lbs.	90 Lbs.	Insect Larvae	All Waters	13
Eggs Scattered in Weeds	3 Yrs.	5"	12 Inches	Plankton & Insects	Shallow Lakes	14
Nest	8 Yrs.	1 - 2 Lbs.	50 Lbs.	Insects	Rivers	15
Nest	12 - 15 Yrs.	3 - 5 Lbs.	117 Lbs.	All Types	Rivers	16
Nest	4 Yrs.	½ - 1 Lb.	8 Lbs.	All Types	Ponds, Creeks, Rivers	17
Nest	4 Yrs.	½ - 1 Lb.	6 Lbs.	All Types	Ponds, Creeks, Rivers	18
Nest	4 Yrs.	¾ - 1½ Lb.	23 Lbs.	All Types	Ponds, Creeks, Rivers	19
Tropical Atlantic Ocean	—	2½ Lbs.	10 Lbs.	Scavenger & Fish	Rivers	20
Eggs Scattered in Marsh Areas	8 - 10 Yrs.	2 Lbs.	52 Lbs.	Fish	Lakes & Large Rivers	21
—	—	9 Inches	18 Inches	Fish & Insects	Lakes & Rivers	22
Eggs Scattered	15 Yrs.	30 Inches	102 Lbs.	Fish	Cold Lakes & Rivers	23
Eggs Scattered in Shallow Streams	3 Yrs.	½ Lb.	5 Lbs.	Fish & Insects	Rivers & Lakes	24
Eggs Scattered Over Rocks	5 Yrs.	¾ Lb.	2 Lbs.	Fish & Insects	Rivers & Lakes	25
Eggs Adhesive Bands in Weeds	7 - 8 Yrs.	¼ Lb.	4 Lbs.	Fish & Insects	Rivers & Lakes	26
Eggs Scattered	10 - 12 Yrs.	1 - 4 Lbs.	25 Lbs.	Fish & Insects	Rivers & Lakes	27
Eggs Scattered	10 - 12 Yrs.	15 Inches	8 Lbs.	Fish & Insects	Rivers & Lakes	28
Nest	5 - 6 Yrs.	¾ Lb.	22 Lbs.	Fish & Crayfish	Lakes & Sluggish Rivers	29
Nest	5 - 6 Yrs.	½ Lb.	18 Lbs.	Insects, Crayfish, Fish	Lakes & Swift Rivers	30
Colony Nesting	5 - 6 Yrs.	¼ Lb.	5 Lbs.	Insects	Lakes & Ponds	31
Colony Nesting	4 - 5 Yrs.	3 - 4 Inches	4 - 5 Inches	Insects	Lakes	32
Colony Nesting	5 - 6 Yrs.	5 - 6 Inches	½ Lb.	Insects	Lakes	33
Nest in Gravel	4 Yrs.	6 - 7 Inches	2½ Lbs.	Insects	Swift Streams	34
Nest	4 Yrs.	8 Inches	5 Lbs.	Insects & Fish	Lakes	35
Nest	4 - 5 Yrs.	8 Inches	5 Lbs.	Insects & Fish	Lakes & Sluggish Streams	36
Eggs Buried in Gravel	7	4 Lbs.	100 Lbs.	Fish	Lake Michigan	37
Eggs Buried in Gravel	4 - 5	15 Lbs.	100 Lbs.	Fish	Lake Michigan	38
Eggs Buried in Gravel	3 - 4	4 Lbs.	30 Lbs.	Fish	Lake Michigan	39
Eggs Scattered Over Gravel	7 - 8	6 Lbs.	80 Lbs.	Fish	Lake Michigan	40
Eggs Scattered in River Current	7	15 Lbs.	112 Lbs.	Fish	Large Lakes	41

ACCEPTED COMMON AND LOCAL NAMES OF SOME ILLINOIS FISHES

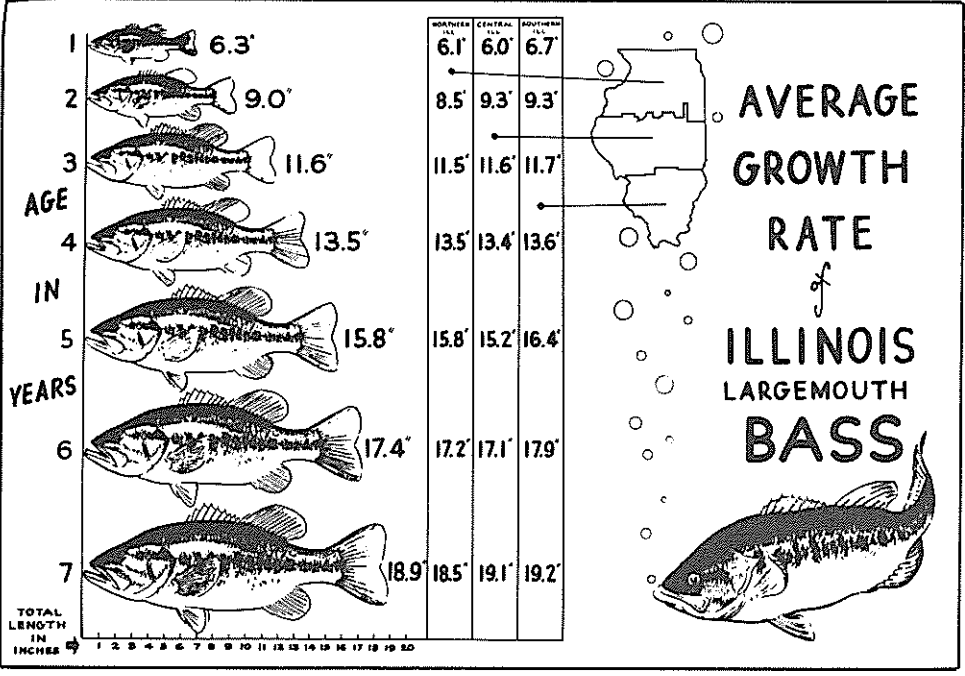
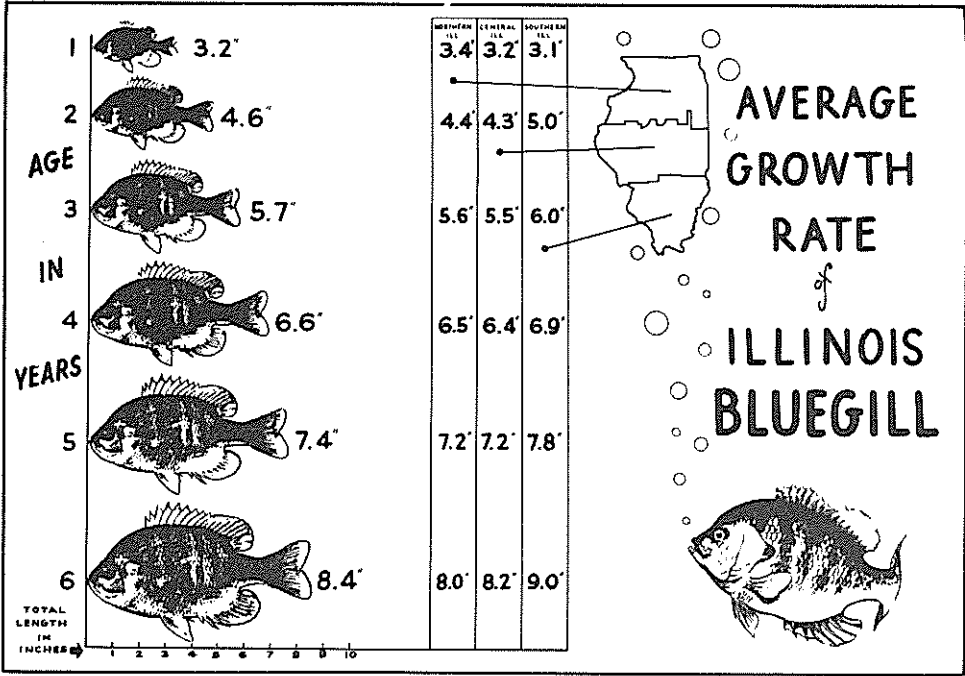
ACCEPTED NAME	LOCAL NAMES
Black bullhead	Bullhead, common bullhead, yellow-belly cat, catfish, horned pout.
Yellow bullhead	Yellow-bellied cat, greaser, catfish, white whiskered bullhead, bullhead.
Brown bullhead	Speckled bullhead, speckled cat, bullhead.
American eel	Common eel, freshwater eel, Boston eel, Atlantic eel.
Northern pike	Common pike, pickerel, great northern pike, northern, jack fish.
Grass pickerel	Pickerel, grass pike, mud pickerel, little pickerel, slough pike.
Muskellunge	Musky.
White bass	Striped bass, streaker, silver bass, silver fish.
Yellow bass	Streaker, striped bass, barfish, black-striped bass, gold bass.
Yellow perch	Perch, ringed perch, ringtail perch, lake perch.
Walleye	Pike-perch, walleyed pike, pike, jack salmon, jack.
Sauger	Sand pike, jack fish, jack salmon, river pike, spotfin pike.
Largemouth bass	Largemouth, bass, black bass, bigmouth bass, line side, green bass, green trout, Oswego bass, slough bass, lake bass.
Smallmouth bass	Smallmouth black bass, black bass, smallmouth, Oswego bass, bronzeback, redeye bass.
Spotted bass	Kentucky spotted bass.
Bluegill	Bream, brim, sunfish, sun perch.
Green sunfish	Green perch, sunfish, perch, black perch, creek perch.
Readear sunfish	Redear, sunfish, shell cracker.
Orangespotted sunfish	Redspotted sunfish, pumpkinseed, dwarf sunfish, pigmy sunfish.
Longear sunfish	Longear, sunfish.
Pumpkinseed	Common sunfish, round sunfish.
Warmouth	Goggle-eye, warmouth bass, mud bass, weed bass, wood bass, rock bass.
Rock bass	Redeye bass, goggle-eye, rock sunfish, red-eye.
White crappie	Crappie, silver crappie, bachelor, newlight.
Black crappie	Calico bass, strawberry bass, crappie, speckled crappie.
Silver Lamprey	Lamper, lamprey eel, blue lamprey, lamprey.
Paddlefish	Spoonbill cat, spoony, boneless cat, shovel nose cat.
Shovelnose sturgeon	Hackleback, switchtail, sand sturgeon.

ACCEPTED NAME	LOCAL NAMES
Bowfin	Dogfish, grindle, mudfish, cypress trout.
Shortnose gar	Duckbill gar, short bill gar, billy gar.
Longnose gar	Billy gar, garpike, billfish.
Alligator gar	Mississippi alligator gar.
Freshwater drum	White perch, perch, sheepshead, croaker, grunting perch, drum, gaspergou.
Gizzard shad	Hickory shad, skipjack, shad.
Mooneye	Toothed herring, white shad, big-eyed shad.
Rainbow trout	Trout, steelhead, reidsided trout.
Brook trout	Speckled trout, brookie, char.
Brown trout	German brown, brownie, spotted trout, loch leven.
Bigmouth buffalo	Redmouth buffalo, stubnose buffalo, round-head buffalo, brown buffalo, goarhead, bull-head buffalo, bullmouth buffalo, bullnose buffalo, slough buffalo, trumpet buffalo, common buffalo, lake buffalo, blue buffalo.
Smallmouth buffalo	Razorback buffalo, roachback buffalo, humpback buffalo, channel buffalo, liner buffalo, quillback buffalo, thick-lipped buffalo.
Black buffalo	Mongrel buffalo, bugler, rooter, reeper, round buffalo, sheephead buffalo, blue buffalo, current buffalo.
Quillback	Silver carp, carpsucker, white carp.
White sucker	Common sucker, fine-scaled sucker, sucker, mullet, whitehorse, slender sucker, black sucker.
Hog sucker	Sucker, hognose sucker.
Carp	German carp, European carp, mirror carp, scaleless carp.
Fathead minnow	Minnow, bait minnow.
Blue catfish	Fulton cat, Mississippi cat, chucklehead cat, coal boater, forktail cat, great blue cat.
Channel catfish	Fiddler, spotted cat, channel cat, catfish.
Flathead catfish	Shovelhead cat, mud cat, yellow cat, Hoosier, goujon, shovelnose cat, Johnny cat, Morgan cat, flat belly.
Atlantic salmon	Landlocked salmon, grilse
Chinook salmon	King salmon, tyee
Coho salmon	Silver salmon
Lake trout	"togue", mackinaw trout
Striped bass	Rock fish

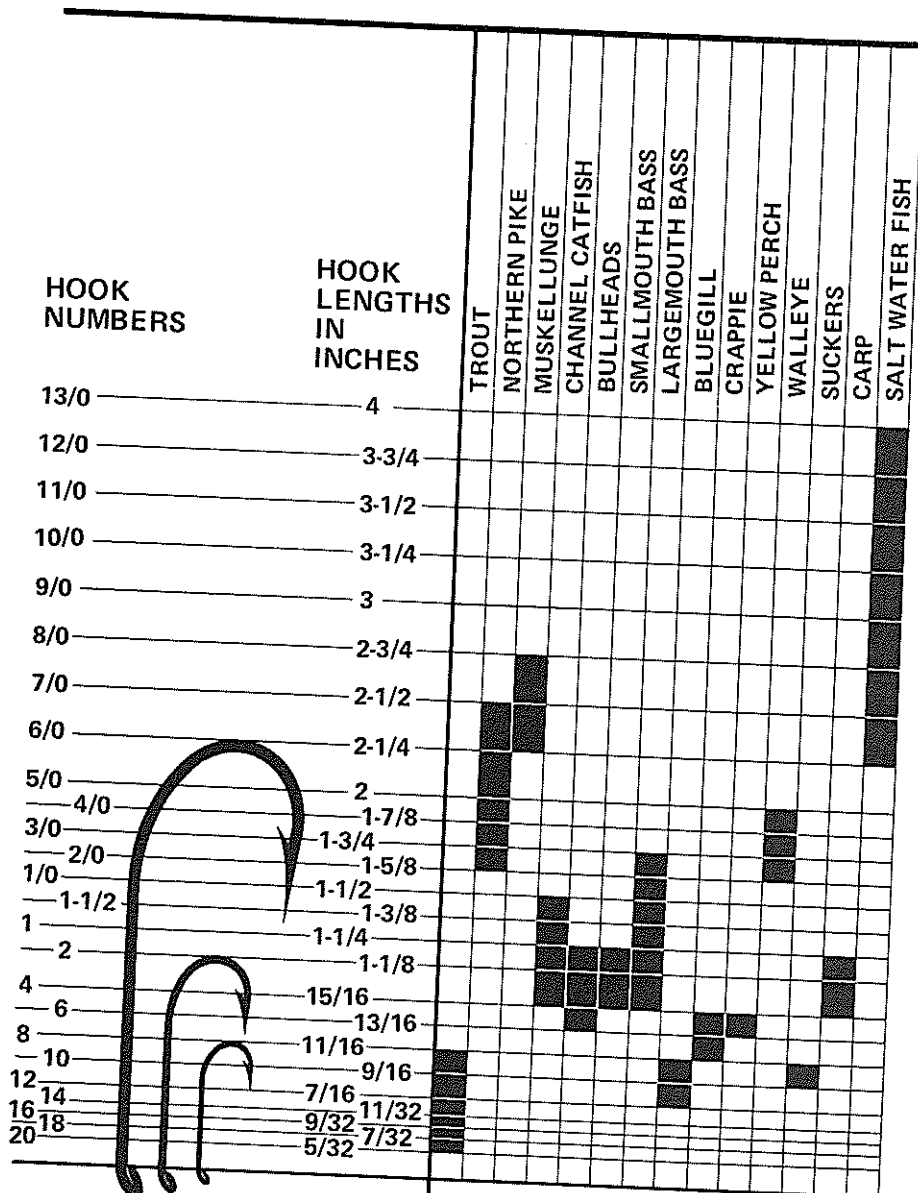


AVERAGE GROWTH RATE OF FISH IN ILLINOIS

SPECIES	AGE IN YEARS									
	1	2	3	4	5	6	7	8	9	10
Largemouth bass	6.3	9.0	11.6	13.5	15.8	17.4	18.9	19.8	20.3	20.7
Smallmouth bass	5.6	8.2	10.6	12.7	14.5	16.3	---	---	---	---
Northern pike	19.0	23.5	25.2	27.8	28.4	31.1	32.5	---	---	---
Walleye	10.1	13.2	15.5	17.6	19.3	22.1	24.6	---	---	---
White bass	6.8	9.5	11.3	13.0	15.1	16.5	---	---	---	---
Yellow bass	5.3	6.4	7.3	8.0	10.1	10.5	12.9	---	---	---
Bluegill	3.2	4.6	5.7	6.6	7.4	8.4	---	---	---	---
Redear sunfish	5.2	6.2	7.1	7.8	9.2	9.3	9.5	---	---	---
Black crappie	6.2	7.2	7.9	10.2	10.3	10.4	---	---	---	---
White crappie	5.3	7.2	8.3	10.6	12.2	---	---	---	---	---
Green sunfish	3.4	4.3	5.4	6.3	7.3	8.8	---	---	---	---
Warmouth	2.9	4.6	5.7	6.7	7.6	8.8	---	---	---	---
Rock bass	4.0	4.5	6.6	7.7	9.0	10.0	---	---	---	---
Pumpkinseed sunfish	3.5	4.4	5.3	5.6	6.4	---	---	---	---	---
Yellow perch	4.1	5.8	7.7	8.6	10.0	11.0	14.3	---	---	---
White sucker	6.7	9.7	12.1	13.6	17.9	---	---	---	---	---
Channel catfish	6.4	9.6	12.6	14.3	16.7	18.5	21.0	22.6	25.6	26.6
Black bullhead	2.7	5.2	6.0	6.7	7.2	8.0	8.5	9.7	10.4	---
Carp	7.8	12.9	14.1	15.0	16.0	17.3	21.3	26.0	32.2	35.3
Lake trout	6.0	13.0	17.8	20.9	24.0	26.0	27.0	27.8	28.5	30.0
Coho salmon	6.0	15.6	23.0	32.8	---	---	---	---	---	---
Chinook salmon	10.0	21.5	31.3	35.3	---	---	---	---	---	---



BAIT HOOK SIZES



HOOK SIZES ARE DETERMINED BY LENGTH OF SHANK EXCLUDING EYE

SIZES RECOMMENDED FOR BAIT FISHING

SUPPORT ILLINOIS WILDLIFE



Donate to Illinois Wildlife Preservation Fund on your state income tax return (IL 1040).

- Your donation will be used to manage, preserve, protect and enhance wildlife and to keep rare species from becoming endangered.
- The donation can be reported as a charitable contribution on next year's federal tax form.
- You can contribute any amount over \$1.00 on your state income tax return to help wildlife.
- After tax season, you can make a tax deductible donation to save Illinois Wildlife by sending a check or money order to: Illinois Wildlife Preservation Fund in care of: Illinois Department of Natural Resources, Resource Protection and Stewardship Division, One Natural Resources Way, Springfield, IL 62702-1271.

Thank you.

ILLINOIS AND NORTH AMERICAN* RECORD FISH

SPECIES	WEIGHT	ANGLER	CAUGHT	LOCATION	COUNTY
BASS, Largemouth (I) (NA)	13 lb./ 1 oz. 22 lb./ 4 oz.	Edward J. Walbel George W. Perry	2/15/76 6/ 2/32	Stone Quarry Lk. Montgomery Lk., GA	LAKE
BASS, Rock (I) (NA)	1 lb./ 10 oz. 3 lb./ 0 oz. 3 lb./ 0 oz.	George Nielson Peter Gulgin David Thomas	5/ 5/87 8/ 1/74 6/13/69	Aux Sable Creek York River, Ontario, CAN. Sugar Creek, IN	GRUNDY
BASS, Smallmouth (I) (NA)	6 lb./ 7 oz. 11 lb./ 15 oz.	Mark Samp David L. Hayes	3/26/85 7/ 9/55	Strip Mine Dale Hollow Lake, TN	FULTON
BASS, Spotted (I) (NA)	7 lb./ 3.12 oz. 10 lb./ 4oz.	Richard Leonard Bryan Shishido	3/15/92 4/21/01	Strip Mine Pine Flat Lake, CA	FULTON
BASS, Striped (I) (NA)	31 lb./ 7 oz. 67 lb./ 1 oz.	Eric Shivers Jeff Smith	5/23/94 8/15/97	Sangchris Lake Colorado River, AZ	CHRISTIAN
BASS, Hybrid Striped (I) (NA)	20 lb./ 0.32 oz. 27 lb./ 5 oz.	David B. Gjelsvik Jerald C. Schaum	6/20/93 4/27/97	Lake of Egypt Greers Ferry Lake, AR	JOHNSON
BASS, White (I) (NA)	4 lb./ 14 oz. 6 lb./ 7 oz.	Bruce Wilson David S.Kraushaar	10/ 7/81 9/19/89	Kaskaskia River Saginaw Bay, MI	CLINTON
BASS, Yellow (I) (NA)	2 lb./ 0 oz. 2 lb./ 8 oz.	Jimmy Kostoff, Jr. Dennis Michael Woebbecking	5/ 5/94 4/12/00	Farm Pond Tennessee River, AL	MADISON
BLUEGILL (I) (NA)	3 lb./ 8 oz. 4 lb./12 oz.	Darren May T. S. Hudson	5/10/87 4/ 9/50	Farm Pond Ketona Lake, AL	JASPER
BOWFIN (I) (I) (NA)	16 lb./ 6 oz. 16 lb./ 6 oz. 21 lb./ 8 oz.	Charles R. Keller Dan Nugent R. L. Harmon	9/23/84 9/14/92 1/29/80	Rend Lake Bay Creek Forest Lake, SC	JEFFERSON POPE
BUFFALO (Bigmouth) (Smallmouth) (I) (NA) (NA)	48 lb./ 0 oz. 70 lb./ 5 oz. 88 lb./ 0 oz.	C.B. Merritt Delbert Sisk Tony Crawford	1936 4/21/80 11/14/93	Mississippi River Bussey Brake, LA Lake Wylie, NC	ADAMS
BUFFALO, Black (I) (NA)	23 lb./12 oz. 63 lb./ 6 oz.	Ron Smith Jim Winters	7/27/84 8/14/99	Rock River Mississippi R.,IA	LEE
BULLHEAD, Black (I) (NA)	5 lb./ 6 oz. 8 lb./ 15 oz.	Justin White Charles M. Taylor	4/24/88 8/19/87	Strip Mine Sturgis Pond, MI	FULTON
BULLHEAD, Brown (I) (NA)	2 lb./ 10.4 oz. 6 lb./ 2 oz.	Shane Richardsn Bobby L. Gibson, Jr.	4/25/93 1/19/91	Weldon Springs Pearl River, MS	DE WITT
BULLHEAD, Yellow (I) (NA)	5 lb./ 4 oz. 4 lb./ 8 oz.	Bill Snow Patricia Simmon	1955 7/15/89	Fox River Mormon Lake, AZ	KANE
CARP (I) (NA)	51 lb./ 0 oz. 57 lb./13 oz.	Steve K. Davis David Nikolow	5/ 1/94 6/19/83	Lake Hillcrest Tidal Basin, Washington, D.C.	MADISON
CARP, Bighead (I) (NA)	43 lb./ 3 oz. 90 lb./ 0 oz.	Larry Hileman Timothy B. Conner	5/25/95 7/22/00	Lyeria Lake Kirby Lake, TX	UNION
CATFISH, Blue (I) (NA)	85 lb./ 0 oz. 116 lb./ 12 oz.	Lindsay Sample, Jr. Charles Ashley, Jr.	2/22/00 8/3/01	Mississippi River Mississippi River, AR	ALEXANDER
CATFISH, Channel (I) (NA)	45 lb./ 4 oz. 58 lb./ 0 oz.	Todd Baumeyer W.B. Whaley	2/ 7/87 7/ 7/64	Baldwin Lake Santee Cooper Rsv., SC	ST. CLAIR
CATFISH, Flathead (I) (NA)	78 lb./ 0 oz. 123 lb./ 0 oz.	Jody Harris Ken Paulie	8/11/95 5/14/98	Carlisle Lake Elk City Rsvr., KS	CLINTON
CRAPPIE, Black (I) (NA)	4 lb./ 8 oz. 6 lb./ 0 oz.	John Hampton Lettie Robertson	5/15/76 11/28/69	Rend Lake Westwego Canal, LA	FRANKLIN
CRAPPIE, White (I) (NA)	4 lb./ 7 oz. 5 lb./ 3 oz.	Kevin Dennis Fred L. Bright	4/ 8/73 7/31/57	Farm Pond Enid Dam, MS	MORGAN
DRUM, Freshwater (I) (NA)	35 lb./ 0 oz. 54 lb./ 8 oz.	Joe Rinella Benny E. Hull	1960 4/20/72	DuQuoin City Lake Nickajack Lake, TN	PERRY
GAR, Longnose (I) (NA)	17 lb./ 5.28 oz. 50 lb./ 5 oz.	Steven Ludvigsen Townsend Miller	7/15/02 7/30/54	Kankakee River Trinity River, TX	GRUNDY
GAR, Shortnose (I) (NA)	5.06 lb./ 0 oz. 6 lb./ 6 oz.	William Meyer Kay Lynn Butterfield	7/20/99 6/15/01	Vermilion River Kentucky Lake, TN	LASALLE

SPECIES	WEIGHT	ANGLER	CAUGHT	LOCATION	COUNTY
GAR, Spotted (I) (NA)	7.3 lb/ 0 oz. 28 lb/ 8 oz.	Rick Hayden John W. Shoupe	4/29/99 3/4/87	Rend Lake Tailwater Lake Seminole, FL	FRANKLIN
GOLDEYE (I) (NA)	2 lb./ 1 oz. 3 lb./ 13 oz.	Steven D. Unzicker Gary Heuer	7/26/98 8/9/87	Embaras River Oahe Tailwater, SD	CUMBERLAND
GRASS CARP (I) (NA)	69 lb/ 8 oz.	Daniel McDougall	7/13/00	Lake Petersburg, IL	MENARD
MUSKELLUNGE (I) (NA)	38 lb/ 8 oz. 69 lb/ 11 oz.	Matt Carmean Louis Spray	4/20/02 10/20/49	Kaskaskia River Chippewa Flowage, WI	SHELBY
MUSKIE, Tiger (I) (NA)	29 lb./ 8.96 oz. 51 lb./ 3 oz.	Robert McDermott John A. Knobla	8/31/02 7/16/19	Lake Summerset Lake Vieux Desert, W/MI	STEPHENSON
NORTHERN PIKE (I) (NA)	26 lb./15 oz. 46 lb/ 2 oz.	Walter Klenzak Peter Dubuc	11/9/89 9/15/40	Strip Mine Lake Sacandaga Rsvr., NY	KANKAKEE
PERCH, Yellow (I) (NA)	2 lb./ 8.75 oz. 4 lb./ 3 oz.	Joseph Grega Dr. C. C. Abbot	1/5/74 5/1865	Arrowhead Club Lake Bordentown, NJ	WILL
REDHORSE, Shorthead (I) (NA)	2 lb./ 2.56 oz. 11 lb./ 5 oz.	Holly Trent Billy Barnaby	3/22/03 5/21/83	Spoon River Brunet River, WI	FULTON
REDHORSE, Silver (I) (NA)	5 lb./ 10 oz. 14 lb./14 oz.	Jane Keenlance Chris A. Stephenson	4/13/03 4/ 2/95	Fox River Pickwick Lake, AL	KENDALL
SALMON, Allantic (Inland) (I) (NA)	18 lb./11.25 oz. 22 lb./11 oz.	Robert Lueckhoff Frank J. McGrath	5/26/79 8/24/82	Lake Michigan Lobstick Lake, Newfoundland, CAN.	COOK
SALMON, Chinook (Inland) (I) (NA)	37 lb./ 0 oz. 44 lb./14 oz.	Marge Landeen Josh Bostedt	8/ 7/76 7/19/94	Lake Michigan Lake Michigan, WI	LAKE
SALMON, Coho (Inland) (I) (NA)	20 lb./ 9 oz. 33 lb./ 4 oz.	Carry Vande VusseJerry Lifton	5/24/72 9/27/89	Lake Michigan Salmon River, NY	LAKE
SALMON, Pink (Inland) (I) (NA)	3 lb./ 4 oz. 4 lb./0 oz.	Neil J. Duba Scott R. Smith	7/ 5/92 8/28/01	Lake Michigan Garden River, Ontario, CAN.	LAKE
SAUGER (I) (NA)	5 lb./12.5 oz. 8 lb./12 oz.	Bill Rolando Mike Fischer	7/30/67 10/ 6/71	Mississippi River Lake Sakakawea, ND	JO DAVIESS
SAUGER-WALLEYE (I) (NA)	9 lb./10.88 oz. 15 lb./10 oz.	Dan Murphy Myron Kibler	12/7/01 1/11/95	Evergreen Lake Ft. Peck Res., MT	MCLEAN
STURGEON, Shovelnose (I) (NA)	5 lb./ 2.56 oz. 7 lb./ 5 oz.	Allen Trout, Jr. Kathleen J. Morrisson	5/30/88 9/ 8/98	Rock River Mississippi River, WI	ROCK ISLAND
SUNFISH, Green (I) (NA) (NA)	2 lb./ 1 oz. 2 lb./ 2 oz. 2 lb./ 2 oz.	John Stein Paul Dilley Louis Ferio	6/28/81 6/18/71 5/28/61	Farm Pond Stockton Lake, MO Cherokee Co. Pit, KS	DE WITT
SUNFISH, Hybrid (I) (NA)	2 lb./ 5.12 oz. 2 lb./ 10 oz.	Todd Parke Ron Fountain	5/7/00 5/17/99	Farm Pond Farm Pond, KS	FAYETTE
SUNFISH, Redear (I) (NA)	2 lb./ 12.3 oz. 5 lb./ 7.5 oz.	Mike DeMattei Amos M. Gay	9/ 7/85 11/6/98	Marion CC Lake Diversion Canal, SC	WILLIAMSON
TROUT, Brook (I) (NA)	7 lb/ 5 oz. 14 lb./ 8 oz.	Daniel Frazier Dr. W.J. Cook	11/3/98 7/1916	Lake Michigan Nipigon River, Ontario, CAN	LAKE
TROUT, Brown (I) (NA)	36 lb./11.5 oz. 40 lb./ 4 oz.	Deva Vranek Howard 'Rip' Collins	6/22/97 5/9/92	Lake Michigan Little Red River, AR	COOK
TROUT, Lake (I) (NA)	38 lb./ 4 oz. 72 lb./ 4 oz.	Theodore W. Rullman Lloyd E. Bull	8/22/99 8/19/95	Lake Michigan Great Bear Lake, N.W.T. Canada	LAKE
TROUT, Rainbow (Inland) (I) (NA)	31 lb./ 6.72 oz. 37 lb./ 0 oz.	Kyle C. Johnson Wes Hamlet	7/10/93 11/25/47	Lake Michigan Lake Pend Oreille, ID	LAKE
TROUT, Tiger (I) (NA)	8 lb/ 12.5 oz. 20 lb./ 13 oz.	Robert W. Zimny Pete M. Friedland	6/26/77 8/12/78	Lake Michigan Lake Michigan, WI	COOK
WALLEYE (I) (NA)	14 lb./ 0 oz. 22 lb./ 11 oz.	Fred Goselin Al Nelson	1961 3/14/82	Kankakee River Greers Ferry Lake, AR	KANKAKEE
WARMOUTH (I) (NA)	1 lb/ 13 oz. 2 lb./ 7 oz.	Wesley Mills Tony D. Dempsey	5/22/71 10/19/85	Farm Pond Yellow River, FL	CUMBERLAND

*North American Records from the 2003 Edition National Fresh Water Fishing Hall of Fame (NFWFHOF)

NOTE: Illinois Record Fish are updated as new records are set. *North American* Records are updated once a year when the new edition of the NFWFHOF is published.

Endangered and Threatened Fishes in Illinois

Endangered

Bigeye chub	Pallid shiner
Bluebreast darter	Pugnose shiner
Bluehead shiner	Weed shiner
Harlequin darter	Pallid sturgeon
Cypress minnow	Lake sturgeon
Greater redhorse	River chub
Northern madtom	Bigeye shiner
Sturgeon chub	Blacknose shiner
Western sand darter	Taillight shiner
Eastern sand darter	Iowa darter
Northern brook lamprey	

Threatened

Cisco	Blackchin shiner
Longnose sucker	River redhorse
Bantam sunfish	Banded killifish
Least brook lamprey	Spotted sunfish
Ironcolor shiner	

Endangered: Any species which is in danger of extinction as a breeding species in Illinois.

Threatened: Any breeding species which is likely to become a state endangered species within the foreseeable future in Illinois.

Endangered and Threatened Fishes are protected by the Illinois Aquatic Life and Wildlife Code.

AQUATIC EXOTICS

Many exotic species, such as the zebra mussel, have invaded the lakes and rivers of Illinois. These non-native species impact our native species through competition, predation and habitat alteration. They can also impact our economy by clogging water intake pipes, disrupting fishing and impeding navigation.

Your help is needed to prevent the introduction and reduce the spread of aquatic exotic species.

Learn to identify aquatic exotics, such as:



the **zebra mussel**, which looks like a small clam. It usually has alternating light and dark stripes on its shell, and is the size of a fingernail. Some mussels, however, may be all light or all dark, and may grow as large as 2 inches. Zebra mussels attach themselves to solid objects and tend to aggregate in clusters. Their free-floating larvae cannot be seen with the naked eye.

the **round goby**, a bottom-dwelling fish. It resembles a large tadpole, and is usually a mottled grey-brown color. Most gobies grow to about 3-6 inches in length, but some may get up to 10 inches. The round goby can be distinguished from the similar-looking, native sculpin by the fused pelvic fins on its underside. These fused fins resemble a suction cup.



Eurasian watermilfoil, which is a submersed, rooted plant. It has feather-like whorled leaves with 12-21 pairs of leaflets on a leaf. The stems branch frequently near the water surface, creating dense mats. The flower spike is above the water, and the flowers are reddish.

Follow these steps when fishing:

SHORE ANGLERS

Drain water from bait buckets before leaving any water body, and
Dispose of unwanted bait on land or in the trash.

BOATERS

Before leaving the boat launch:

Drain boat (livewell, bilge, transom well, and motor) of all lake or river water, and
Remove plants and animals from boat, trailer, and all other boating equipment.

After leaving the boat launch:

Wash all equipment with 104°F tap water or high-pressure sprayer, or
Dry equipment for at least five days.

Comply with state regulations concerning aquatic exotics:

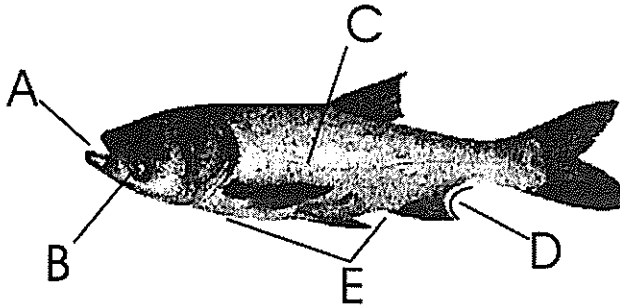
Black Carp Round gobies Rusty crayfish Ruffe Snakeheads

Tubenose gobies Rudd Walking Catfish

May not be processed alive.

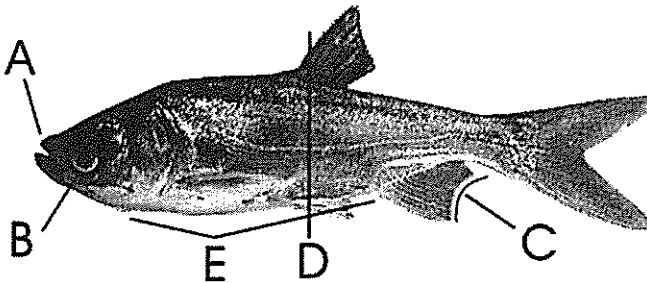
For more information on aquatic exotic species, contact the Illinois Natural History Survey/Illinois-Indiana Sea Grant at 847-872-8677 or visit the Illinois-Indiana Sea Grant website at www.iisgcp.org.

BIGHEAD CARP



- mouth large and terminal (A) without teeth in jaws, and with lower jaw projecting beyond upper jaw
- eyes situated far forward (B) along midline of body and projecting downward
- lateral line complete and strongly decurved anteriorly (C) with 85-100 scales
- anal fin hooked (D)
- smooth ventral keel (E) extending from vent forward to pelvic fin base

SILVER CARP



- head and opercle scaleless with relatively large, upturned mouth (A) without teeth in jaws
- eyes situated far forward (B) along the midline of the body and projecting somewhat downward
- anal fin hooked (C)
- dorsal fin with 8 rays and origin of fin (D) behind pelvic insertion
- a smooth ventral keel (E) extending from base of anal fin to isthmus at base of the gills