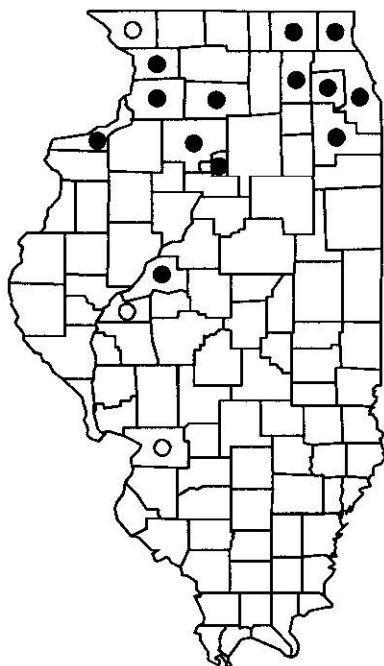


Xanthocephalus xanthocephalus (Bonaparte)

YELLOW-HEADED BLACKBIRD

ICTERIDAE

Status: Endangered in Illinois



Present Distribution: The yellow-headed blackbird breeds from western North America and southwestern Ontario south to Baja California, New Mexico, Texas, Missouri and Illinois. In Illinois most recent nesting has occurred in the northern portion of the state.

Former Illinois Distribution: In Illinois, the yellow-headed blackbird has probably always been restricted to the prairie regions in the northern part of the state, where it was once a locally abundant breeding bird (Nelson 1876b, Ridgway 1889).

Habitat: This colonial blackbird nests in emergent vegetation of deep-water palustrine wetlands (Heidorn *et al.* 1991, Twedt and Crawford 1995). Nests are built over relatively deep water, usually in cattails, bulrushes, or reeds (Twedt and Crawford 1995). This bird forages within wetlands and surrounding croplands, or savanna.

Reason for Status: In Illinois, the yellow-headed blackbird is at the eastern limit of its range. The Illinois population is small, declining, and isolated from the main North American breeding range for this species (Ward 2004).

Management Recommendations Maintenance of open marsh habitat appears to be important for sustaining nesting colonies. However, although habitat loss undoubtedly contributed to historical population declines for this species, habitat availability may not be limiting current populations, and reproductive success in Illinois populations is also presently high (Ward 2004). Current declines in Illinois may be caused by low immigration from other portions of the breeding range (Ward 2004). As a result, greater connectivity with other portions of the range may be necessary to conserve this isolated population of yellow-headed blackbirds.



Xanthocephalus xanthocephalus
(Yellow-headed Blackbird)

MAMMALS (Mammalia)

Canis lupus Linnaeus

GRAY/TIMBER WOLF

CANIDAE

Status: Threatened in Illinois
Federally Endangered



Present Distribution: Throughout the 20th Century, wolves have not been documented in Illinois. Currently, more than 2,000 wolves live in the wild in Minnesota, with several hundred animals in Michigan, Wisconsin, and the Rocky Mountains of Montana, Idaho, and Wyoming. In Alaska, wolf populations number around 7,000 and are not considered endangered or threatened. In December, 2002 a wolf originating from the Great Lakes pack (either in Minnesota, Wisconsin, or Michigan) was shot and killed in Marshall County, Illinois. In July, 2003 a wolf originating from northern Wisconsin was found dead in an eastern Indiana soybean field (Randolph County, Indiana). This animal traveled through Illinois (greater metropolitan Chicago) before being recovered in Indiana.

Former Illinois Distribution: The gray wolf was once abundant and widespread throughout Illinois. Shortly after their arrival in Illinois, pioneers set about the task of "taming the wilderness". Destroying wolves was considered a moral duty necessary to make the wilderness fit for civilization. The last known record of self-sustaining wolf population(s) in Illinois is from Jackson County in 1889 (McClain *et al.* 2002).

Habitat: Substantial populations of the gray wolf still exist throughout most of Canada and Alaska. In the Midwest, pack numbers continue to grow throughout northern Minnesota, Wisconsin, and Michigan. Throughout its range, wolves occupy diverse habitats, including forests, prairies, tundra, and mountains. The two habitat factors for wolves appear to be an abundance of large game and minimal interference from humans (Kurta 1995).

Reason for Status: The final federal reclassification of the gray/timber wolf was published in the Federal Register on April 1, 2003. This reclassification established three (3) distinct population segments, whereby USFWS Region 3 (which includes Illinois) is entirely within the Eastern Gray Wolf Distinct Population Segment, where all wolves are threatened. Under Illinois' Endangered Species Protection Act states that all species classified as threatened or endangered by the USFWS are automatically placed on the State list.

Management Recommendations: Most biologists believe any wolves wandering into Illinois now, or in the future, will be young adults dispersing from packs, looking to establish their own territory. Chances for a self-sustaining, breeding wolf population in Illinois are highly unlikely given our abundance of roads and our highly fragmented, agriculturally dominant landscape. There is no record of an attack and death of a person caused by healthy wolves on the entire North American continent. The small number of cases involving injuries from wolves are those involving animals accustomed to being fed by humans.

Corynorhinus rafinesquii (Lesson)

**RAFINESQUE'S
BIG-EARED BAT**

VESPERTILIONIDAE

Status: Endangered in Illinois



Present Distribution: Rafinesque's big-eared bats are primarily known from southeastern United States. A small, but distinct population protrusion parallels the Wabash River Valley into southern Indiana and Illinois. Existing at the northern edge of its range in Illinois, this bat has only been recorded from Alexander, Jackson, Johnson, Pulaski, and Union counties. A single record of an anomalous migrant from Wabash County, near Mt. Carmel, Illinois exists (Elder 1945).

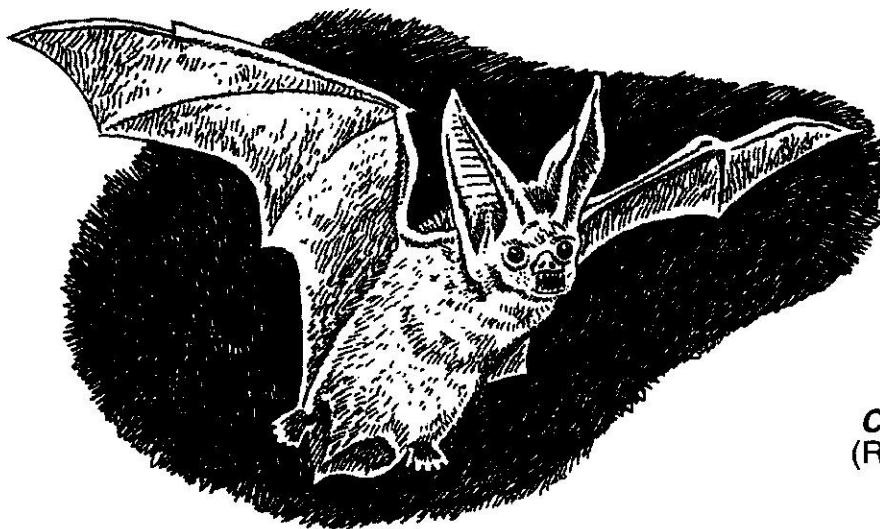
Former Illinois Distribution: In the early 1900s, this species was not known to occur in Illinois (Cory 1912). Of the sparse Illinois records, the largest numbers of big-eared bats are from a summer colony discovered in the downstairs room of an abandoned hunting cabin in Johnson County in 1977. This population peaked at 48 bats in 1983 and fell to zero by 1999. Similarly, a 1991 survey of an abandoned hunting cabin in Alexander County yielded 20 bats. No bats were present when the cabin was surveyed in 1999 (Kath 2000).

Habitat: Rafinesque's big-eared bats roost in unoccupied buildings and other man-made structures as well as trees and caves (Jones 1977). In winter this species has been encountered in Illinois silica sand mines and caves in Alexander, Jackson, Johnson, and Union counties (Hoffmeister 1989, Kath 2002). These bats are quite tolerant of temperature extremes as evidenced by the frequency at which hibernating individuals are found as singles often within 30 m of the cave/mine entrance (Mumford and Whitaker 1982). Unlike most Illinois' bat species, big-eared bats arouse from hibernation easily and even become active and fly outside their hibernaculum during the winter (Hoffmeister 1989).

Reason For Status: This species has been documented in the state from only four locations in the last 15 years. Most occurrences are from the Little Black Slough area in Johnson County.

Management Recommendations: More detailed information of the status and distribution of this species within Illinois is needed. Presently, the prime recovery objective for this species is to preserve and protect structures (both natural and man-made) used at any time of year by the big-eared bat. Such structures have a strong chance of being re-colonized, if properly restored and protected.

Note: This species was referred to as *Plecotus rafinesquii* in earlier editions of this work (Herkert 1992).



Corynorhinus rafinesquii
(Rafinesque's Big-eared Bat)

Myotis austroriparius (Rhoads)

SOUTHEASTERN MYOTIS

VESPERTILIONIDAE

Status: Endangered in Illinois



Present Distribution: The southeastern myotis occurs in the southeastern United States including parts of Florida, Georgia, Alabama, Louisiana, Mississippi, North and South Carolina, Tennessee, Kentucky, and Arkansas. A prominent northern population protrusion follows the Mississippi River into extreme southern Illinois and Indiana. There are recent records for this species from six Illinois counties (Alexander, Hardin, Johnson, Massac, Pope and Pulaski). Winter surveys from 1997 through 1999 have revealed small populations (15-25 bats) of hibernating southeastern myotis from one cave in Pope County and one cave in Hardin County (Kath 1999b).

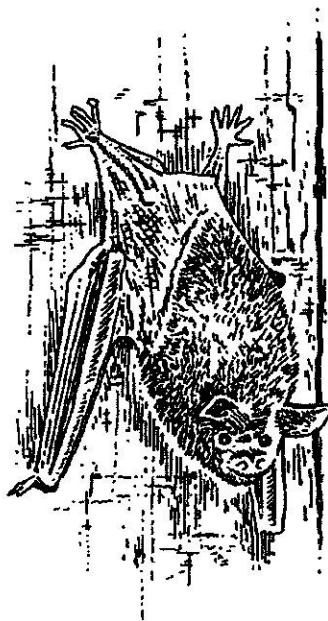
Former Illinois Distribution: Between 1950-1975 the southeastern myotis was reported from Alexander, Hardin, Johnson, and Union counties (Hoffmeister 1989). Extensive summer mist netting efforts at 55 sites scattered throughout the 11 southernmost Illinois counties were conducted from 1984 through 1991. A total of 68 southeastern myotis were captured at three of the 55 sites (one site each in Alexander, Pope and Pulaski counties)(Hofmann *et al.* 1999).

Habitat: Within Illinois, the southeastern myotis occupies caves, mines, and mature forested wetlands (Gardner *et al.* 1992). Summer roosts are usually near water over which they forage (Hoffmeister 1989), and winter hibernacula are generally in caves. The southeastern myotis is often found in caves supporting large populations of the more common eastern pipistrelle bat (*Pipistrellus subflavus*). These animals exhibit an affinity for roost sites in dry portions of caves (Barbour and Davis 1974). Gardner *et al.* (1992) discovered the first maternity colony north of Louisiana and Florida roosting in a hollow tree in Little Black Slough in Johnson County (Hofmann *et al.* 1999). In Illinois, Hofmann *et al.* (2002)

were the first to document southeastern myotis maternity colonies using a cave in Pope County, and an abandoned silica mine in Alexander County.

Reason For Status: The southeastern myotis has a very restricted distribution in Illinois. Its long nightly flights from its roost to forage (recorded to be greater than 6 km in southern Illinois), and its infrequent capture in mist nets during the summer makes this species very difficult to study. Range-wide, the single most serious case of decline in southeastern bat populations continues to be human destruction of roosts and the bats themselves.

Management Recommendations: Protection of wetland and cave habitat known to be used by this species is the greatest management need. Protection efforts must be concentrated during periods of residence. Specifically, disturbance at maternity caves/mines should be avoided from April 1 through August 31; disturbance at hibernacula should be avoided between September 1 and April 30.



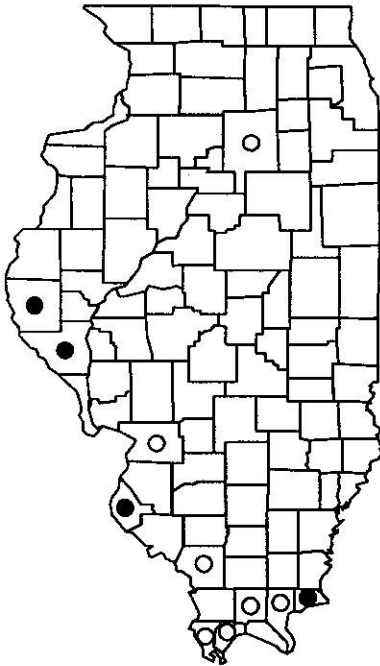
Myotis austroriparius
(Southeastern Myotis)

Myotis grisescens A.H. Howell

GRAY BAT

VESPERTILIONIDAE

Status: Endangered in Illinois
Federally Endangered



Present Distribution: The range of this species extends from eastern Kentucky and Tennessee to western Missouri and northeastern Oklahoma, extending in the east through Alabama to northwestern Florida. In Illinois, gray bats are known from 11 counties in the extreme southern and west-central parts of the state. Recent winter surveys by Illinois Department of Natural Resources staff (1997-2002) did not reveal any gray bats (Kath 1999a). Small summer populations have recently (2000, 2002) been discovered using two caves in Monroe County and one in Hardin County.

Former Illinois Distribution : Although probably never common or widely distributed in Illinois, the population has drastically decreased from 10,000 animals in the mid-1960s to 1,000 to 2,000 in 1975. A large majority of this population, and the subsequent decline, occurred at the Cave Spring Cave in Hardin County (Whitaker 1975).

Habitat: Of any North American mammal, gray bats are the most restricted to cave habitats. These animals roost, raise their young, and hibernate almost exclusively in caves (Hoffmeister 1989). Consistent winter temperatures ranging from 42 to 52 degrees F must be present in order for this species to survive. Given their strict torpor requirements, approximately 95% of the entire known population hibernates in 10-12 caves each winter, with over 50% utilizing a single cave in northern Alabama. Summer caves, especially those used by maternity colonies, must act as warm air traps or provide isolated caverns and/or domed ceilings capable of trapping the body heat from clustered individuals. Temperatures typically range from 57 to 77 degrees F in caves used by gray bats during the summer (Tuttle 1976a). Foraging is almost exclusively over rivers, streams, and lakes within 1 km of their caves (Tuttle 1976b, LaVal *et al.* 1977).

Reason For Status: The alarming decline in the number of gray bats is due to increased human disturbance and vandalism to colonies in both their winter and summer caves (Skaggs 1973, Barbour and Davis 1974, Tuttle 1979). In addition, exclusion from hibernacula by blockage of entrances (naturally occurring or human induced), improperly constructed bat gates that do not allow for bat flight and/or proper air flow, and pesticide poisoning of insect prey continue to be major documented causes of gray bat declines (Clark *et al.* 1978, 1983). This species is intolerant of human disturbance and even a moderate level of human activity can exclude gray bats from a suitable cavern.

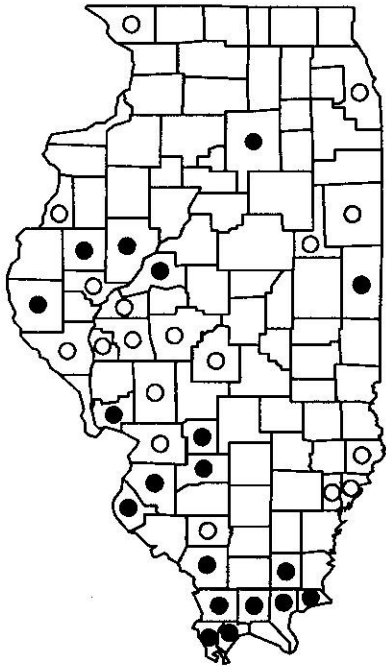
Management Recommendations: All Illinois colonies should be censused regularly to monitor population trends. Entry into maternity caves should be strictly prohibited. Entry into other caverns known to be used by gray bats should be restricted, especially from March through October. Since the majority of the population utilizes relatively few caves nationwide, protection of these sites has significantly aided gray bat recovery. Several caves outside of Illinois have had spectacular increases in gray bats due to proper gating and educational signs. In some cases, protecting caves that have been abandoned has resulted in re-occupation.

Myotis sodalis Miller & Allen

INDIANA BAT

VESPERTILIONIDAE

Status: Endangered in Illinois
Federally Endangered



Present Distribution: The Indiana bat has been found in 27 states throughout much of the eastern United States. These bats occur from western Oklahoma north to Iowa and Michigan, east to New Hampshire, and south to northern Florida. During fall and winter, more than 90% of the total population hibernates in a few large caves in Indiana, Illinois, Kentucky, and Missouri. Investigations have found evidence of summer breeding populations from 18 Illinois counties (Gardner *et al.* 1996, Kath 2002). Based upon the most recent survey information, populations appear to be increasing in Illinois. The estimated Indiana bat winter population for Illinois is currently between 16,500 and 19,500 animals (Kath 2002).

Former Illinois Distribution: In Illinois, early records (prior to 1970) of Indiana bats were specimens collected during hibernation from caves in southern (Union and Hardin) and western (Pike and Madison) counties, and abandoned mines in Jo Daviess and LaSalle counties. Prior to 1985, summer records of reproductively active female or juvenile Indiana bats were documented only for Jackson, Perry (Kirkpatrick 1980), Pike (Gardner and Gardner 1980, Clark and Clark 1987), Union (Brack 1979), and the border of Wabash and Edwards counties (Kessler and Turner 1980).

Habitat: Winter habitat consists of caves and mines where individuals hibernate in characteristic dense clusters (up to 3,200 bats/m²). Summer roosts usually are located beneath the exfoliated bark of dead trees, although roosts are sometimes common within cavities and under the bark of living trees (Gardner *et al.* 1990, 1991). These animals may travel up to 2.5 km between roosting and foraging areas. Indiana bats

forage and fly within an air space ranging from 2 to 30 m above ground level (Humphrey *et al.* 1977). Most Indiana bats caught in mist nets are captured over streams and other flyways at heights greater than 2 m (Gardner *et al.* 1989).

Reason For Status: Based on censuses taken at hibernacula over the entire range of this animals, the total known Indiana bat population was estimated at approximately 353,000 bats in 1995-1997. This represents a decline of about 60% since population surveys began in the 1960s (USFWS 1999). Although several known human related factors have caused past declines, they do not appear to account for the declines now being witnessed (USFWS 1999). Documented causes of decline include vandalism and commercialism of caves and natural catastrophes such as flooding and/or collapse.

Management Recommendations: Management of hibernacula should continue, including restricted entry (especially while bats are hibernating) and the elimination of activities destructive to caves. Caves/mines with hibernating Indiana bats should not be entered between September 1 and April 30. Riparian and upland forest tracts and active roost trees in areas used by Indiana bats should be conserved as much as possible (Kath 1999c).

Myotis sodalis
(Indiana Bat)



Neotoma floridana (Ord)

EASTERN WOODRAT

MURIDAE

Status: Endangered in Illinois



Present Distribution: Eastern woodrats occur across much of the southeastern and south-central United States (Hall 1981). The subspecies *Neotoma floridana illinoiensis* occurs in extreme southern Illinois, southeastern Missouri, western Kentucky, and Tennessee, eastern Arkansas, most of Mississippi and Alabama, and the panhandle of Florida (Schwartz and Odum 1957, Wiley 1980, Hall 1981). Sites occupied by woodrats in southern Illinois are isolated from the nearest known populations 75 miles to the west in Missouri and 85 miles to the south in Tennessee (Nawrot and Spitzkeit 1986). The largest and most persistent population in Illinois occurs at Pine Hills in Union County (Swayne 1949, Crim 1961, Nawrot 1974, West 1986, Wagle 1996, Monty 1997). Smaller populations occur at Fountain Bluff, Horseshoe Bluff, Little Grand Canyon, and Cripps Bend in Jackson County (Monty *et al.* 1995, Wagle 1996, Monty 1997).

Former Illinois Distribution: Skeletal remains establish a prehistoric (c.a. 8500-1500 BC) distribution which included portions of Randolph and Monroe counties (Parmalee 1959, Parmalee *et al.* 1961), 65 miles north of where woodrats now exist in Illinois. Nawrot and Klimstra (1976) found direct evidence of past habitation by woodrats at 24 sites in Jackson, Union, Johnson, Pope, Gallatin, and Hardin counties. Nawrot (1974) listed 40 sites in Jackson, Union, Williamson, Johnson, Saline, Pope, Gallatin, and Hardin counties that seemed to offer suitable habitat, but provided no direct evidence of past habitation.

Habitat: In Illinois, nearly all records of this species are from limestone bluffs of the Mississippi River and sandstone outcrops in the Shawnee Hills (Nawrot and Klimstra 1976). The eastern woodrat is primarily a nocturnal woodland species that builds large "houses" of twigs and sticks about 1 m in diameter and 1 m high. These shelters are usually found in rock crevices, on ledges, or in piles of rock at the bases of bluffs. During August through October, woodrats collect and store food items for consumption during winter (Crim 1961). Hickory nuts, acorns, and legumes from honey locust, black locust and Kentucky coffee trees are important foods (Wagle and Felhamer 1997).

Reason For Status: Illinois occurs at the extreme northern edge of this species' range. Nawrot and Klimstra (1976) speculated unusually harsh winters during 1912 and 1918 caused a large decline in numbers of woodrats at Pine Hills and extirpation of colonies in the Shawnee Hills.

Management Recommendations: The recovery plan for this species calls for translocations from nearby states to re-establish woodrat populations at unoccupied sites where colonies existed historically, link existing populations with newly established colonies in the Shawnee Hills, and improve genetic heterogeneity of Illinois' isolated populations (Bluett *et al.* 2002). The recovery plan also advocates establishment of a long-term monitoring program and encourages use of silvicultural practices that promote regeneration of oak-hickory forests near sites occupied by woodrats (Bluett *et al.* 2002).



Neotoma floridana
(Eastern Woodrat)

Ochrotomys nuttalli (Harlan)

GOLDEN MOUSE

MURIDAE

Status: Threatened in Illinois



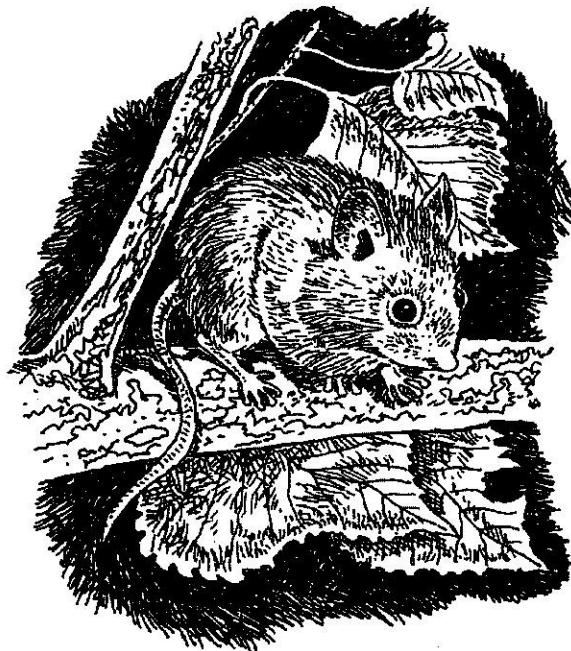
Present Distribution: The golden mouse occurs throughout the southeastern quadrant of the United States from eastern Texas and Oklahoma east to the Atlantic coastal states from Virginia to Florida. Southern Illinois is at the northernmost edge of its range (Feldhammer and Paine 1987, Hoffmeister 1989). There are recent (since 1990) records of the golden mouse from Alexander, Gallatin, Hardin, Johnson, Pope, Saline, and Union counties, but this species also may be present in Jackson and Williamson counties.

Former Illinois Distribution : The present distribution of the golden mouse is probably similar to its former range in the state. There is one old report from Marion County near Salem (Cory 1912), but this record has been questioned by Hoffmeister (1989).

Habitat: In Illinois, the golden mouse inhabits dense thickets in a variety of wooded habitats including bottomland hardwood forests, pines, drainage-ways, abandoned upland fields, roadside rights-of-way and successional sites dominated by cedar (Andrews 1963, Blus 1966). This species appears to be dependent on the presence of a dense understory including honeysuckle, catbrier, and grape (Klimstra and Roseberry 1969, Feldhamer and Paine 1987, Hoffmeister 1989). Populations of golden mice are usually small and isolated with densities that range from 1-12 mice per ha (Andrews 1963).

Reason For Status: Golden mice occur primarily in the Shawnee Hills Natural Division within Illinois. Although recent surveys have documented a number of locations within the state, populations at these sites are generally small. The discontinuous distribution and specific habitat requirements qualify this species as a potentially threatened member of the Illinois fauna.

Management Recommendations: The current distribution and numbers of this species in Illinois should be closely monitored. Consideration should be given to appropriate habitat management where golden mice occur on public lands.



Ochrotomys nuttalli
(Golden Mouse)

Oryzomys palustris (Harlan)

RICE RAT

MURIDAE

Status: Threatened in Illinois



Present Distribution: The rice rat occurs from Texas, Oklahoma, and southeastern Kansas eastward to the Atlantic coast, and north to Pennsylvania and southern New Jersey (Hoffmeister 1989). Its range within Illinois extends from the Coastal Plain Division northward through the Shawnee Hills Section into the Mt. Vernon Hill Country.

Former Illinois Distribution: The present Illinois range of the rice rat is probably similar to its distribution of the last few centuries. Archeological evidence indicates that this species occurred farther north in the state during prehistoric times (Baker 1936, McLaughlin and Robertson 1951).

Habitat: Rice rats live in wet swampy fields and marshes of southern Illinois, especially in areas of the Shawnee Hills or Ozark Uplift (Hoffmeister 1989). In Illinois, they have been found along roadside ditches, farm ponds, marshy railroad rights-of-way, cypress swamps, marshes, and wet ecotonal areas of woods and grass (Klimstra and Roseberry 1969, McLaughlin and Robertson 1951, Klimstra and Scott 1956, Klimstra 1969, Hofmann *et al.* 1990, Hoffmeister 1989).

Reason For Status: The occurrence of this species in human-modified habitats is a favorable indication of its likelihood for continued existence in Illinois. However, due to the threatened nature of southern Illinois wetland habitats and the generally low population levels of this species a degree of concern is justified.

Management Recommendations: The major threat to this species is the continued loss of wetland habitat; therefore, existing populations in natural habitats such as cypress swamps and marshes should be protected.



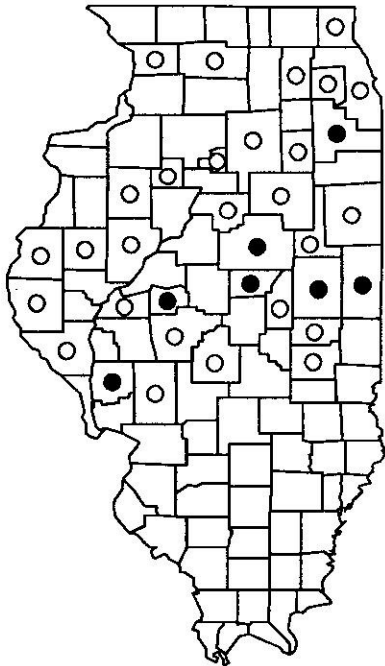
Oryzomys palustris
(Rice Rat)

Spermophilus franklinii (Sabine)

FRANKLIN'S GROUND SQUIRREL

SCIURIDAE

Status: Threatened in Illinois



Present Distribution: This species' range extends from east-central Alberta and southern Saskatchewan southeastward to parts of Nebraska, Missouri, Illinois and Indiana (Hall 1981, Hoffmeister 1989). Recent field surveys in Illinois (Hofmann 1998, Martin *et al.* 2003) verified the presence of Franklin's ground squirrels in Champaign and Vermilion counties; other occurrences were reported for Menard and DeWitt counties. Responses to a mail survey sent to wildlife biologists and staff at forest preserves, nature preserves, state parks and other public areas identified 11 extant colonies, mostly in the Chicago and Champaign areas, as well as 44 possible populations based on unconfirmed sightings along with the existence of historical records and/or the presence of suitable habitat; locations were scattered throughout much of the species' historical range in the state (Martin *et al.* 2002, 2003).

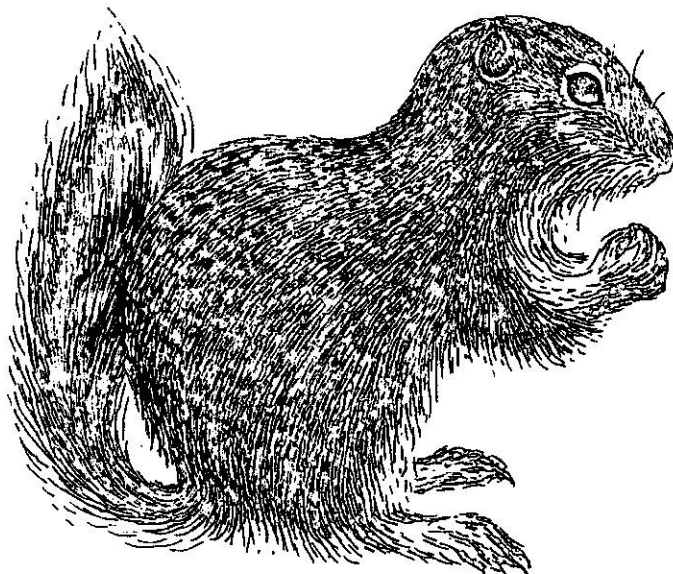
Former Illinois Distribution: Vouchered museum specimens have been collected from the northern two-thirds of Illinois (Hoffmeister 1989).

Habitat: Although this species' range overlaps the historical distribution of tallgrass prairie, colonies are often found along edges between grasslands and woodlands, forests, thickets, and wetlands (Cory 1912). Raised railroad beds flanked by dense grasses, forbs, shrubs, and occasional small trees provide cover and sites for burrowing, as do fence rows, old fields, roadsides, ditch banks, and unkept cemeteries with similar characteristics (Schwartz and Schwartz 1981, Hoffmeister 1989, Hofmann 1998).

Reason For Status: Lack of recent sightings, anecdotal opinions

and a scarcity of contemporary museum specimens suggest this species may be declining in the eastern part of its range (Lewis and Rongstad 1992, Johnson and Choromanski-Norris 1992, Pergams and Nyberg 2001). Results of recent field surveys in Illinois must be considered preliminary, but difficulty locating colonies at sites where they occurred historically suggests that concern is warranted (Martin *et al.* 2002).

Management Recommendations: A rigorous assessment of the species' status is recommended. Efforts to establish populations in Cook and Knox counties (Panzer 1986, Van Petten and Schramm 1972) failed, indicating a need for basic ecological information (Martin *et al.* 2003) before introductions are attempted again. Establishing and maintaining grassland habitats are beneficial, especially where well-drained soils provide sites for excavating burrows for hibernation. Management regimes that include cool season grasses like brome and provide diverse stages of early- to mid- succession might be helpful.



Spermophilus franklinii
(Franklin's Ground Squirrel)

LITERATURE CITED

- Ahlstedt, S. 1984. Recovery plan for the orange-footed pearly mussel, *Plethobasus cooperianus* (Lea, 1834). U.S. Fish and Wildlife Service, Atlanta, Georgia. 44pp.
- Ahlstedt, S. 1985. Recovery plan for the pink mucket pearly mussel, *Lampsilis orbiculata* (Hildreth, 1828). U.S. Fish and Wildlife Service, Atlanta, Georgia. 47pp.
- Andrews, R.D. 1963. The golden mouse in southern Illinois. Natural History Miscellanea, The Chicago Academy of Sciences 179: 1-3.
- Bailey, R.M. 1959. Distribution of the American cyprinid fish *Notropis anogenus*. *Copeia* 1959:119-123.
- Baker, F.C. 1906. A catalogue of the mollusca of Illinois. Bulletin of the Illinois State Laboratory of Natural History 7:53-136.
- Baker, F.C. 1928. The freshwater mollusca of Wisconsin. Part II. Pelecypoda. Bulletin of the Wisconsin Geological and Natural History Survey 70:1-495.
- Baker, F.C. 1936. Remains of animal life from the Kingston Kitchen Midden site near Peoria, Illinois. Transactions of the Illinois State Academy of Sciences 29:243-246.
- Bannor, B.K. and E. Kiviat. 2002. Common Moorhen (*Gallinula chloropus*). The Birds of North America, No. 685. in A. Poole, and F. Gill, editors. The Birds of North America, Inc. Philadelphia, Pennsylvania.
- Barbour, R.W., and W.H. Davis. 1974. Mammals of Kentucky. University Press of Kentucky, Lexington. x+321pp.
- Bavetz, M.J. 1993. Geographic variation, distribution, and status of Kirtland's snake *Clomophis kirtlandii* (Kennicott) in Illinois. Unpublished Masters Thesis, Southern Illinois University, Carbondale, Illinois.
- Becker, C.N. 1980. Avifauna use of Illinois airports. 42nd Midwest Fish and Wildlife Conference, St. Paul, Minnesota. 15pp.
- Beecher, W.J. 1942. Nesting birds and the vegetation substrate. Chicago Ornithological Society, Chicago, Illinois. 69pp.
- Beltz, E. 1991. Illinois chorus frog, *Pseudacris streckeri illinoensis*, 1991 survey of Cass, Menard, Morgan, and Scott counties, Illinois. Unpublished report submitted to the Illinois Department of Conservation, Springfield, Illinois. 18pp.
- Beltz, E. 1992. Final report on the status and distribution of the eastern massasauga *Sistrurus catenatus catenatus* (Rafinesque, 1818), in Illinois. Unpublished report submitted to the Illinois Department of Conservation, Springfield, Illinois. 36pp.
- Birkenholz, D. E. 1975. The summer birds of Goose Lake Prairie Nature Preserve, 1970-1973. Natural History Miscellanea, The Chicago Academy of Sciences 193:1-11.
- Bluett, R.D., G.A. Feldhamer, S.P. Widowski, S.E. Lauzon, G.W. Kruse, J.A. Kath, S. Ballard, and J.P. Shimp. 2002. Recovery goals, objectives, and criteria. pages 21-29. in R.D. Bluett, editor. Eastern woodrat recovery plan. Illinois Department of Natural Resources, Springfield, Illinois.
- Blus, L.J. 1966. Some aspects of golden mouse ecology in southern Illinois. Transaction of the Illinois Academy of Sciences 59:334-341.
- Bohlen, H.D. 1976. A black rail in summer in central Illinois. Illinois Audubon Bulletin 175:25.
- Bohlen, H.D. 1989. The birds of Illinois. Indiana University Press. Bloomington, Indiana. 221pp.
- Bollinger, E.K. 1991. Conservation of grassland birds in agricultural areas. pages 279-287. in D.J. Decker, M.E. Krasny, G.R. Goff, C.R. Smith and D.W. Gross (editors). Challenges in the Conservation of Biological Resources: A Practitioner's Guide. Westview Press, Boulder, Colorado.
- Bollinger, E.K. 1995. Successional changes and habitat selection in hayfield bird communities. *Auk* 112:720-730.
- Bouseman, J.K. and J.G. Sternburg. 2001. Field Guide to butterflies of Illinois, Manual 9, Illinois Natural History Survey, Champaign, Illinois.
- Bouzat, J.L., H.H. Cheng, H.A. Lewin, R.L. Westemeier, J.D. Brawn, and K.N. Paige. 1998. Genetic evaluation of a demographic bottleneck in the greater prairie chicken. *Conservation Biology* 12:836-843.
- Bowles, M.L., K. Kerr, R.H. Thom, and D.E. Birkenholz. 1980. Threatened, endangered and extirpated birds of Illinois prairies. Illinois Audubon Bulletin 193:2-12.
- Boyd, J.A. and L.M. Page. 1978. The life history of the crayfish *Orconectes kentuckiensis* in Big Creek, Illinois. *American Midland Naturalist* 99:398-414.
- Brack, V., Jr. 1979. Determination of presence and habitat suitability for the Indiana bat (*Myotis sodalis*) and gray bat (*Myotis grisescens*) for portions of three ditches, Big Five Levee and Drainage District, Union and Alexander counties, Illinois. Unpublished Report submitted to the U.S. Army Corps Engineers, St. Louis District, St. Louis, Missouri. 23pp.
- Brandon, R.A. and S.R. Ballard. 1991. Inventories of amphibians and reptiles in Illinois: final report.

- Unpublished report submitted to the Illinois Department of Conservation, Springfield, Illinois. ii+133 pp.
- Brandon, R.A. and M. Bavetz. 1992. Status of Kirtland's snake in Illinois. Unpublished report submitted to the Illinois Department of Conservation, Springfield, Illinois.
- Brandon, R. A., and J. E. Huheey. 1979. Distribution of the dusky salamander, *Desmognathus fuscus* (Green), in Illinois. The Natural History Miscellanea, The Chicago Academy of Sciences 205:1-7.
- Brandon, R.A. and M.A. Morris. 1987. Distribution, abundance, and status of the broad-banded water snake, *Nerodia fasciata confluens*, in Illinois. Unpublished report submitted to the Illinois Endangered Species Protection Board, Springfield, Illinois.
- Brandon, R.A. and M.A. Morris. 1988. Status, distribution, and habitat requirements of the green water snake, Kirtland's water snake, and the eastern ribbon snake in Illinois. Unpublished report submitted to the Illinois Endangered Species Protection Board, Springfield, Illinois. 25pp.
- Brooks, B.L. and S.A. Temple. 1990a. Habitat availability and suitability for loggerhead shrikes in the upper Midwest. American Midland Naturalist 123:75-83.
- Brooks, B.L. and S.A. Temple. 1990b. Dynamics of a loggerhead shrike population in Minnesota. Wilson Bulletin 102:441-450.
- Brown, L.E., and D. Moll. 1979. The status of the nearly extinct Illinois mud turtle (*Kinosternon flavescens spooneri* Smith 1951) with recommendations for its conservation. Milwaukee Public Museum Special Publications in Biology and Geology 3:1-49.
- Brown, L.E., and G.B. Rose. 1988. Distribution, habitat, and calling season of the Illinois chorus frog (*Pseudacris streckeri illinoensis*) along the lower Illinois River. Illinois Natural History Survey Biological Notes No. 132:1-13.
- Brown, M. and J.J. Dinsmore. 1986. Implications of marsh size and isolation for marsh bird management. Journal of Wildlife Management 50:392-397.
- Brown, P.L. 1955. The biology of the crayfishes of central and southeastern Illinois. Unpublished Doctoral Dissertation, University of Illinois. Urbana, Illinois. 158pp.
- Buehler, D.A. 2000. Bald Eagle (*Haliaeetus leucocephalus*). The Birds of North America, No. 506. in A. Poole and F. Gill, editors. The Birds of North America, Inc., Philadelphia, Pennsylvania.
- Buhnerkempe, J.E. and R.L. Westemeier. 1988. Breeding biology and habitat of upland sandpipers on prairie-chicken sanctuaries in Illinois. Transactions of the Illinois State Academy of Sciences 81:153-162.
- Bull, J., and J. Farrand, Jr. 1997. National Audubon Society field guide to north American birds (eastern region). Alfred A. Knopf Publishing Co., New York. 797pp.
- Burr, B.M. 1977. The bantam sunfish, *Lepomis symmetricus*: systematics and distribution, and life history in Wolf Lake, Illinois. Illinois Natural History Survey Bulletin 31:437-466.
- Burr, B.M. 1991. The fishes of Illinois: an overview of a dynamic fauna. Illinois Natural History Survey Bulletin 34:417-427.
- Burr, B.M. 1996. Environmental report for Horseshoe Lake Restoration Project, Alexander County, Illinois. Unpublished report submitted to Illinois Department of Natural Resources, Springfield, Illinois.
- Burr, B.M. and R.L. Mayden. 1982. Status of the cypress minnow, *Hybognathus hayi* Jordan, in Illinois. Natural History Miscellanea, The Chicago Academy of Sciences 215:1-10.
- Burr, B.M., M.L. Warren, Jr. and K.S. Cummings. 1988. New distributional records of Illinois fishes with additions to the known fauna. Transactions of the Illinois Academy of Science 81:163-170.
- Burr, B.M., M.L. Warren, Jr., and R.C. Heidinger. 1989. Reproductive potential and habitat of the ironcolor shiner, *Notropis chalybaeus*, in Illinois. Unpublished report submitted to the Illinois Endangered Species Protection Board, Springfield, Illinois.
- Cahn, A.R. 1931. *Kinosternon flavescens*: a surprising turtle record from Illinois. Copeia 1931:120-123.
- Cahn, A.R. 1937. The turtles of Illinois. Illinois Biological Monographs 16:1-218.
- Capler, J.M. and E.O. Moll. 1988. Survey of a spotted turtle population (*Clemmys guttata*) at Lockport Prairie Nature Preserve, Will County, Illinois. Unpublished report submitted to the Forest Preserve District of Will County, Joliet, Illinois. 40pp.
- Cashatt, E.D. 1991. A vulnerable species: the Ohio emerald dragonfly. The Living Museum 53:29-30.
- Clark, B.K. and B.S. Clark. 1987. Distribution notes of bats for west-central Illinois. Transactions of the Illinois State Academy of Sciences 80:207-212.
- Clark, D.R., Jr., R.L. Clawson, and C.J. Stafford. 1983. Gray bats killed by Dieldrin at two additional Missouri caves: Aquatic macroinvertebrates found dead. Bulletin of Environmental Contamination and Toxicology 30:214-218.
- Clark, D.R., Jr., R.K. LaVal, and D.M. Swineford. 1978. Dieldrin-induced mortality in an endangered species, the gray bat (*Myotis grisescens*). Science 199:1357-1359.

- Cochran, W., S. Wood, A. Raim, and A. Veld. 1992. A peregrine tale: part two. Illinois Natural History Survey Reports No. 313:4-5.
- Collins, J.T. 1974. Amphibians and reptiles in Kansas. University of Kansas Museum of Natural History Public Education Series No. 1.
- Colvin, B.A. 1985. Common Barn-Owl population decline in Ohio and the relationship to agricultural trends. *Journal of Field Ornithology* 56:224-235.
- Colvin, B.A., P.L. Hegdal, and W.B. Jackson. 1984. A comprehensive approach to research and management of Common Barn Owl populations. pages 270-282. in W. McComb, editor. *Proceedings of the Workshop on Management of Nongame Species and Ecological Communities*. University of Kentucky, Lexington.
- Colwell, M. A., and L. W. Oring. 1988. Habitat use by breeding and migrating shorebirds in southcentral Saskatchewan. *Wilson Bulletin* 100:554-566.
- Conant, R. and J.T. Collins. 1991. A field guide to reptiles and amphibians eastern and central North America. (Peterson field guide series). 3ed. Houghton Mifflin Co., Boston and New York. xvii + 450pp.
- Congdon, J.D., A.E. Dunham, and R.C. van Loben Sels. 1993. Delayed sexual maturity and demographics of Blanding's turtles (*Emydoidea blandingii*): implications for conservation and management of long-lived organisms. *Conservation Biology* 7:826-833.
- Congdon, J.D., D.W. Tinkle, G.L. Breitenbach, and R.C. van Loben Sels. 1983. Nesting ecology and hatching success in the turtle *Emydoidea blandingii*. *Herpetologica* 39:417-429.
- Cooke, W.W. 1913. Distribution and migration of North American herons and their allies. U.S. Department of Agriculture Biological Survey Bulletin 45. 70pp.
- Cooper, J. 1977. Vest-pocket turtle. *Natural History* 86:53-57.
- Cory, C.B. 1909. The birds of Illinois and Wisconsin. Publications of the Field Museum of Natural History. Zoology Series 9:1-766.
- Cory, C.B. 1912. The mammals of Illinois and Wisconsin. Publications of the Field Museum of Natural History Zoological Series 11:1-505.
- Crim, J.A. 1961. The habitat of the woodrat in southern Illinois. Unpublished Masters Thesis, Southern Illinois University, Carbondale, Illinois. 99pp.
- Cross, F.B. 1967. Handbook of fishes of Kansas. University of Kansas Museum of Natural History Miscellaneous Publications No. 45:1-357.
- Cummings, K.S. 1991. The aquatic mollusca of Illinois. *Illinois Natural History Survey Bulletin* 34:428-438.
- Cummings, K.S. and C.A. Mayer. 1992. Field guide to freshwater mussels of the Midwest. Manuel 5. Illinois Natural History Survey, Champaign, Illinois xii+194 pp.
- Cummings, K.S., M.E. Retzer, C.A. Mayer, and L.M. Page. 1990. Life history aspects and status of the federally endangered Fat Pocketbook *Potamilus capax* (Green, 1832) (Mollusca: Unionidae) in the lower Wabash River, Illinois and Indiana. Illinois Natural History Survey, Center for Biodiversity, Technical Report 1990(1):iii+37.
- Curry, J.R. 2001. Dragonflies of Indiana. Indiana Academy of Science. Indianapolis, Indiana. xiv + 303pp.
- Dann, D. R. 2003. The status of the common tern in Illinois: with comments on recent conservation efforts at the Great Lakes Naval Training Center, Lake County. *Meadowlark* 12:6-8.
- Dechant, J. A., D. H. Johnson, L. D. Igl, C. M. Goldade, A. L. Zimmerman, and B. R. Euliss. 2003. Effects of management practices on grassland birds: Wilson's Phalarope. Northern Prairie Wildlife Research Center, Jamestown, North Dakota. 15 pages.
- Dennis, S.D. 1985. A recovery plan for the fat pocketbook pearly mussel, *Potamilus (=Proptera) capax* (Green, 1832). U.S. Fish and Wildlife Service, Atlanta, Georgia. 57pp.
- Dettmers, J.M., S. Gutreuter, D.H. Wahl, and D.A. Soluk. 2001. Pattern in abundance of fishes in main channel of the Upper Mississippi River system. *Canadian Journal of Fisheries and Aquatic Science* 58:933-942.
- Dimmick, W.W. 1988. Discovery of the western sand darter, *Ammocrypta clara*, in the Mississippi River below the confluence of the Missouri River. *Transactions of the Illinois Academy of Science* 81:211-212.
- Docker, M.F. and F.W.H. Beamish. 1994. Age, growth, and sex ratio among populations of least brook lamprey, *Lampetra aegyptera*, larvae: an argument for environmental sex determination. *Environmental Biology of Fishes* 41:191-205.
- Dreslik, M.J. 1996. Ecology and community relationships of the river cooter, *Pseudemys concinna*, in a southern Illinois backwater. Unpublished Masters Thesis, Eastern Illinois University, Charleston, Illinois. v + 69pp.
- Dreslik, M.J. 1997. Ecology of the river cooter *Pseudemys concinna*, in a southern Illinois floodplain lake. *Herpetological Natural History* 5:135-145.
- Dreslik, M.J. 1998. Current status and conservation of the River Cooter (*Pseudemys concinna*) in southern Illinois. Linnaeus Fund Research Report. Chelonian Conservation and Biology 3:135-137.

- Dreslik, M.J. 1999. Dietary notes on the red-eared slider (*Trachemys scripta*) and river cooter *Pseudemys concinna*) from southern Illinois. Transactions of the Illinois State Academy of Science 92:233-241.
- Dreslik, M.J., E.O. Moll, C.A. Phillips, and T.P. Wilson. 1998. The endangered and threatened turtles of Illinois. Illinois Audubon 263:10-15.
- Dryer, W.R. 1966. Bathymetric distribution of fish in the Apostle Islands region, Lake Superior. Transactions of the American Fisheries Society 95:248-259.
- Duebbert, H.F. and J.T. Lokemoen. 1977. Upland nesting of American bitterns, marsh hawks, and short-eared owls. Prairie Naturalist 9:33-40.
- Dunn, E.H. and D.J. Argo. 1995. Black tern (*Chilidonias niger*). The Birds of North America, No. 147. in A. Poole, and F. Gill, editors. The Academy of Natural Sciences, Philadelphia, Pennsylvania, and The American Ornithologists' Union, Washington, DC.
- Dyer, W.G., and S.R. Ballard. 1991. *Ochetosoma aniarum* (Leidy, 1891) Skrjabin and Antipin, 1957 (Trematoda: Plagiorchiidae) in *Nerodia cyclopion* (Duméril, Bibron, and Duméril, 1854). Transactions of the Illinois State Academy of Science 84:145-149.
- Eddleman, W.R., K.E. Evans, and W.H. Elder. 1980. Habitat characteristics and management of Swainson's warbler in southern Illinois. Wildlife Society Bulletin 8:228-233.
- Ehrlich, P.R., D.S. Dobkin, and D. Wheye. 1988. The birder's handbook: a field guide to the natural history of North American birds. Simon and Schuster Inc., New York, New York. xxx+785pp.
- Elder, W.H. 1945. Big-eared bat in Illinois. Journal of Mammalogy 26:433-434.
- England, A.S., M.J. Bechard, and C.S. Houton. 1997. Swainson's Hawk (*Buteo swainsoni*). The Birds of North America, No. 265. in A. Poole, and F. Gill, editors. The Academy of Natural Sciences, Philadelphia, Pennsylvania, and The American Ornithologists' Union, Washington, DC.
- Ernst, C.H. 1972. *Clemmys guttata*. Catalogue of American amphibians and reptiles. 124.1-124.2.
- Ernst, C.H. and R.W. Barbour. 1989. Turtles of the world. Smithsonian Institution Press, Washington, D.C. xii + 313pp.
- Ernst, C.H., R.W. Barbour and J.E. Lovich. 1994. Turtles of the United States and Canada. Smithsonian Institution Press, Washington, D.C. xxxviii + 578pp.
- Erwin, R.M. 1989. Responses to human intruders by birds nesting in colonies: experimental results and management guidelines. Colonial Waterbirds 12:104-108.
- Evans, S.A. 1981. Ecology and behavior of the Mississippi Kite (*Ictinia mississippiensis*) in southern Illinois. Unpublished Masters Thesis, Southern Illinois University, Carbondale, Illinois. xi+116pp.
- Evers, R.A., and L.M. Page. 1977. Some unusual natural areas in Illinois. Illinois Natural History Survey Biological Notes No. 100:1-47.
- Faxon, W. 1914. Notes on the crayfishes in the United States National Museum and the Museum of Comparative Zoology, with description of new species and subspecies to which is appended a catalogue of the known species and subspecies. Memoirs of the Museum of Comparative Zoology at Harvard College 40:351-427.
- Federal Register. 1990. Endangered and threatened wildlife and plants; Designation of the freshwater mussel, the fanshell as an endangered species. Federal Register 55:25591-25595.
- Feldhamer, G.A. and C.R. Paine. 1987. Distribution and relative abundance of the golden mouse (*Ochrotomys nuttalli*) in Illinois. Transactions of the Illinois State Academy of Science 80:213-220.
- Forbes, S.A., and R.E. Richardson. 1905. On a new shovel nose sturgeon from the Mississippi River. Bulletin of the Illinois State Laboratory of Natural History 7:37-44.
- Forbes, S.A., and R.E. Richardson. 1908. The fishes of Illinois. Illinois State Laboratory of Natural History, Urbana, Illinois. cxxxi+357pp.
- Ford, E.R. 1956. Birds of the Chicago region. Special Publication. The Chicago Academy Science 12. vii+117pp.
- Frest, T.J. 1984. National recovery plan for Iowa Pleistocene snail (*Discus macclintocki*). U.S. Fish and Wildlife Service, Atlanta, Georgia. 26pp.
- Galbreath, E.C. 1961. Two alligator snappers, *Macrolemys temmincki*, from southern Illinois. Transactions of the Illinois Academy of Sciences. 54:134-135.
- Gardner, J.E., and T.L. Gardner. 1980. Determination of presence and habitat suitability for the Indiana bat (*Myotis sodalis*) and gray bat (*Myotis grisescens*) for portions of the lower 6.6 miles of McKee Creek, McGee Creek Drainage and Levee District, Pike County, Illinois. Unpublished Report submitted to the U.S. Army Corps Engineers, St. Louis District, St. Louis, Missouri. 22pp.
- Gardner, J.E., J.D. Garner, and J.E. Hofmann. 1989. A portable mist netting system for capturing bats with emphasis on *Myotis sodalis* (Indiana bat). Bat Research News 30 (1):1-8.
- Gardner, J.E., J.D. Garner, and J.E. Hofmann. 1990. Combined progress reports: 1989 and 1990 investigations of *Myotis sodalis* (Indiana bat)

- distribution, habitat use, and status in Illinois. Unpublished report submitted to the Bureau of Location and Environment, Illinois Department of Transportation, Springfield, Illinois. iv+19pp.
- Gardner, J.E., J.D. Garner, and J.E. Hofmann. 1991. Summer roost selection and roosting behavior of *Myotis sodalis* (Indiana bat) in Illinois. Unpublished report submitted to the Endangered Species Coordinator, Region 3, U.S. Fish and Wildlife Service and Indiana/Gray Bat Recovery Team, U.S. Fish and Wildlife Service. vii+56pp.
- Gardner, J.E., J.E. Hofmann, and J.D. Garner. 1996. Summer distribution of the federally endangered Indiana bat (*Myotis sodalis*) in Illinois. Transactions of the Illinois State Academy of Science 89:187-196.
- Gardner, J.E., J.E. Hofmann, J.D. Garner, J.K. Krejca, and S.E. Robinson. 1992. Distribution and status of *Myotis austroriparius* (southeastern bat) in Illinois. Unpublished report submitted to the Illinois Department of Conservation, Springfield, Illinois. vi+38pp.
- Garman, H. 1890. Notes on Illinois reptiles and amphibians, including several species not before recorded from the northern states. Bulletin of the Illinois State Laboratory of Natural History 3:185-190.
- Garman, H. 1891. A synopsis of the reptiles and amphibians of Illinois. Bulletin of the Illinois State Laboratory of Natural History 3:215-385.
- Garton, J.S., E.W. Harris, and R. A. Brandon. 1970. Descriptive and ecological notes on *Natrix cyclopion* in Illinois. Herpetologica 26:454-461.
- George, W.G. 1971. Vanished and endangered birds of Illinois: A new 'black list' and 'red list.' Illinois Audubon Bulletin 158:2-11.
- George, W.G. 1972. Breeding status of the purple gallinule, brown creeper, and Swainson's warbler in Illinois. Wilson Bulletin 84:208-210.
- Gibbs, J.P., S. Melvin and F.A. Reid. 1992. American bittern (*Botaurus lentiginosus*). The Birds of North America, No. 18. in A. Poole, P. Stettenheim, and F. Gill, editors. The Academy of Natural Sciences, Philadelphia, Pennsylvania, and The American Ornithologists' Union, Washington, DC.
- Gibbs, J.P., F.A. Reid, and S. Melvin. 1992. Least bittern (*Ixobrychus exilis*). The Birds of North America, No. 17. in A. Poole, P. Stettenheim, and F. Gill, editors. The Academy of Natural Sciences, Philadelphia, Pennsylvania, and The American Ornithologists' Union, Washington, DC.
- Graber, J.W., R.R. Graber and E.L. Kirk. 1978. Illinois birds: Ciconiiformes. Illinois Natural History Survey Biological Notes 109:1-80.
- Graber, J.W., R.R. Graber and E.L. Kirk. 1983. Illinois birds: Wood Warblers. Illinois Natural History Survey Biological Notes 118:1-144.
- Graber, R.R. and J.W. Graber. 1963. A comparative study of bird populations in Illinois, 1906-1909 and 1956-1958. Illinois Natural History Survey Bulletin 28:383-518.
- Graber, R.R., J.W. Graber and E.L. Kirk. 1973. Illinois birds: Laniidae. Illinois Natural History Survey Biological Notes 83:1-18.
- Greenberg, J. 1980. Sandhill cranes nesting in Illinois. Wilson Bulletin 92:527.
- Gross, A.O. 1908. Swainson's warbler (*Helinaia swainsoni*). Auk 25:225.
- Gunning, G.E. and W.M. Lewis. 1956. The fish population of Sugar Creek, Illinois. Transactions of the Illinois State Academy of Sciences 49:21-24.
- Gutzke, W.H.N. and G.C. Packard. 1987. The influence of temperature on eggs and hatchlings of Blanding's turtles, *Emydoidea blandingii*. Journal of Herpetology 21:161-163.
- Hall, E.R. 1981. The mammals of North America. Second ed. John Wiley and Sons, New York. 2 Volumes.
- Hamel, P.B. 2000. Cerulean Warbler (*Dendroica cerulea*). The Birds of North America, No. 511. in A. Poole and F. Gill, editors. The Birds of North America, Inc., Philadelphia, Pennsylvania.
- Hamilton, K.G.A. 1994. Leafhopper evidence for origins of northeastern relict prairies (Insecta: Homoptera: Cicadellidae). pages 61-70. in R.G. Wickett, P.D. Lewis, A. Woodliffe, and P. Pratt, editors. Proceedings of the Thirteenth North American Prairie Conference. Department of Parks and Recreation, Windsor, Ontario, Canada.
- Hamilton, K.G.A. 1999. Are bugs endangered? pages 104-118. in C. Warwick, editor. Proceedings of the Fifteenth North American Prairie Conference. The Natural Areas Association, Bend, Oregon.
- Hands, H.M., R.D. Drobney, and M.R. Ryan. 1989a. Status of the least bittern in the northcentral United States. Unpublished report submitted to the U.S. Fish and Wildlife Service, Twin Cities, Minnesota. ii+13pp.
- Hands, H.M., R.D. Drobney, and M.R. Ryan. 1989b. Status of the black rail in the northcentral United States. Unpublished report submitted to the U.S. Fish and Wildlife Service, Twin Cities, Minnesota. 11pp.
- Hardin, M.E., J.W. Hardin, and W.D. Klimstra. 1977. Observations of nesting Mississippi kites in southern Illinois. Transactions of the Illinois State Academy Science 70:341-348.
- Hardin, M.E., and W.D. Klimstra. 1976. An annotated bibliography of the Mississippi kite (*Ictinia mississippiensis*). Unpublished report of the Southern Illinois University Cooperative Wildlife Research Laboratory, Carbondale, Illinois. 36pp.

- Harkness, W.J.K., and J.R. Dymond. 1961. The lake sturgeon; the history of its fishery and problems of conservation. Ontario Department of Lands and Forestry, Fish and Wildlife Branch, Toronto. 121pp.
- Havlik, M.E. 1981. The historic and present distribution of the endangered naiad mollusk *Lampsilis higginsii* (Lea 1857). Bulletin of the American Malacological Union, Inc. 1980:19-22.
- Hay, O.P. 1887. The amphibians and reptiles of Indiana. Annual Report of the Indiana State Board of Agriculture 28:201-227.
- Heidorn, R.R., W.D. Glass, D.R. Ludwig and M.A. Cole. 1991. Northeastern Illinois wetland survey for endangered and threatened birds, a summary of field data: 1980-1989. Illinois Department of Conservation, Division of Natural Heritage, Natural Heritage General Technical Report No. 1. x+157pp.
- Heitzman, J.R. and J.E. Heitzman. 1987. Butterflies and Moths of Missouri. Missouri Department of Conservation, Jefferson City, Missouri. viii+385pp.
- Helzer, C.J. and D.E. Jelinski. 1999. The relative importance of patch area and perimeter-area ratio to grassland breeding birds. Ecological Applications 9:1448-1458.
- Herkert, J.R. 1991a. An ecological study of the breeding birds of grassland habitats within Illinois. Unpublished Doctoral Dissertation, University of Illinois, Urbana, Illinois. iv+115pp.
- Herkert, J.R. 1991b. Prairie birds of Illinois: population response to two centuries of habitat change. Illinois Natural History Survey Bulletin 34:393-399.
- Herkert, J.R. 1992. Endangered and threatened species of Illinois: Status and distribution, Volume 2 – Animals. Endangered Species Protection Board, Springfield, Illinois. 142pp.
- Herkert, J.R. 1994. Status and habitat selection of the Henslow's sparrow in Illinois. Wilson Bulletin 106:35-45.
- Herkert, J.R. 1998. The influence of the CRP on grasshopper sparrow population trends in the mid-continental United States. Wildlife Society Bulletin 26:227-231.
- Herkert, J.R. 2004. Organochlorine pesticides are not implicated in the decline of the Loggerhead Shrike. The Condor 106:702-705.
- Herkert, J.R., D.L. Reinking, D.A. Wiedenfeld, M. Winter, J.L. Zimmerman, W.E. Jensen, E.J. Finck, R.R. Koford, D.H. Wolfe, S.K. Sherrod, M.A. Jenkins, J. Faaborg, and S.K. Robinson. 2003. Effects of prairie fragmentation on the nest success of breeding birds in the midcontinental United States. Conservation-Biology 17: 587-594.
- Herkert, J.R., S.A. Simpson, R.L. Westemeier, T.L. Esker and J.W. Walk. 1999. Response of northern harriers and short-eared owls to grassland management in Illinois. Journal of Wildlife Management 63:517-523.
- Hess, I.E. 1910. One hundred breeding birds of an Illinois ten-mile radius. Auk 27:19-32.
- Hoffmeister, D.F. 1989. The mammals of Illinois. University of Illinois Press, Urbana, Illinois. xvii+348pp.
- Hofmann, J.E. 1998. A survey of Franklin's ground squirrel (*Spermophilus franklinii*) in East-Central Illinois. Illinois Natural History Survey, Center for Biodiversity Technical Report 1998 (11). Unpublished report submitted to the Illinois Department of Natural Resources, Springfield, Illinois. 12pp.
- Hofmann, J.E., J.E. Gardner, J.K. Krejca, and J.D. Garner. 1999. Summer records and a maternity roost of the southeastern myotis (*Myotis austroriparius*) in Illinois. Transactions of the Illinois State Academy of Science 92:95-107.
- Hofmann, J.E., J.E. Gardner and M.J. Morris. 1990. Distribution, abundance, and habitat of the marsh rice rat (*Oryzomys palustris*) in southern Illinois. Transactions of the Illinois State Academy of Science 83:162-180.
- Hofmann, J.E., J.A. Kath, and T.L. Carter. 2002. Observations on the summer roosting habits of the southeastern bat in Illinois. Unpublished report submitted to the Illinois Department of Natural Resources, Springfield, Illinois. 2pp.
- Holsinger, J.R. 1972. Biota of freshwater ecosystems. Identification manual No. 5: the freshwater amphipod crustaceans (Gammaridae) of North America. Unpublished report submitted to the Environmental Protection Agency, Washington, D.C. 89pp.
- Holsinger, J.R. 1978. Systematics of the subterranean Amphipod genus *Stygobromus* (Crangonyctidae), Part II: Species of the eastern United States. Smithsonian Contributions to Zoology No. 266:iv+144pp.
- Holsinger, J.R. 1986. Holarctic crangonyctid amphipods. pages 535-549. in L. Botosaneanu, editor. Stygofauna Mundi: a faunistic, distributional, and ecological synthesis of the world fauna inhabiting subterranean waters. E.J. Brill/Dr. W. Backhuys, Leiden.
- Holt, D.W. and S.M. Leasure. 1993. Short-eared Owl (*Asio flammeus*). The Birds of North America, No. 62. in A. Poole and F. Gill, editors. The Academy of Natural Sciences; Philadelphia, Pennsylvania, and The American Ornithologists' Union, Washington D.C.
- Houston, C.S. and D.E. Bowen, Jr. 2001. Upland Sandpiper (*Bartramia longicauda*). The Birds of North America, No. 580. in A. Poole and F. Gill, editors. The Birds of North America, Inc., Philadelphia, Pennsylvania.

- Howard, A.D. 1951. A river mussel parasite on a salamander. *Natural History Miscellanea*, The Chicago Academy of Sciences 77:1-6.
- Howell, A.H. 1910. Breeding records from southern Illinois. *Auk* 27:216
- Hrabik, T.R., J.J. Magnuson, and A.S. McLain. 1998. Predicting effects of rainbow smelt on native fishes in small lakes: evidence from long-term research on two lakes. *Canadian Journal of Fisheries and Aquatic Science* 55:1364-1371.
- Hubbs, C., and J. Pigg. 1972. Habitat preferences of the harlequin darter, *Etheostoma histrio*, in Texas and Oklahoma. *Copeia* 1972:193-194.
- Hubricht, L. and J.G. Mackin. 1940. Description of nine new species of fresh-water amphipod crustaceans with notes and new localities for other species. *American Midland Naturalist* 23:187-218.
- Humphrey, S.R., A.R. Richter, and J.B. Cope. 1977. Summer habitat and ecology of the endangered Indiana bat, *Myotis sodalis*. *Journal of Mammology* 58:334-346.
- Irwin, R.R. and J.C. Downey. 1973. Annotated checklist of the butterflies of Illinois. *Illinois Natural History Survey Biological Notes* No. 81:1-60.
- Johnson, S.A. and J. Choromanski-Norris. 1992. Reduction in the eastern limit of the range of the Franklin's ground squirrel (*Spermophilus franklinii*). *American Midland Naturalist* 128:325-331.
- Johnson, T.R. 1987. *The Amphibians and Reptiles of Missouri*. Missouri Department of Conservation. Jefferson City, Missouri. x + 368pp.
- Jones, C. 1977. *Plecotus rafinesquii*. *Mammalian Species* 69:1-4.
- Jones, S. 1935. St. Louis region. *Bird-Lore* 37:380.
- Jordan, D.S. 1878. A catalogue of the fishes of Illinois. *Bulletin of the Illinois State Laboratory of Natural History* 1(2):37-70.
- Kahl, R.B., T.S. Baskett, J.A. Ellis, and J.N. Burroughs. 1985. Characteristics of summer habitats of selected nongame birds in Missouri. University of Missouri-Columbia, College of Agriculture, Agricultural Experiment Station, Research Bulletin 1056. 155 pp.
- Kantrud, H. A., and R. E. Stewart. 1984. Ecological distribution and crude density of breeding birds on prairie wetlands. *Journal of Wildlife Management* 48:426-437.
- Kantrud, H. A., and K. F. Higgins. 1992. Nest and nest site characteristics of some ground-nesting, non-passerine birds of northern grasslands. *Prairie Naturalist* 24:67-84.
- Kath, J.A. 1999a. Gray bat (*Myotis grisescens*): Endangered and Threatened Species Strategic Recovery Outline. Unpublished report submitted to the Illinois Department of Natural Resources, Springfield, Illinois. 4pp.
- Kath, J.A. 1999b. Southeastern bat (*Myotis austroriparius*): Endangered and Threatened Species Strategic Recovery Outline. Unpublished report submitted to the Illinois Department of Natural Resources, Springfield, Illinois. 5pp.
- Kath, J.A. 1999c. Indiana bat (*Myotis sodalis*): Endangered and Threatened Species Strategic Recovery Outline. Unpublished report submitted to the Illinois Department of Natural Resources, Springfield, Illinois. 4pp.
- Kath, J.A. 2000. Rafinesque's big-eared bat (*Corynorhinus rafinesquii*): Endangered and Threatened Species Strategic Recovery Outline. Unpublished report submitted to the Illinois Department of Natural Resources, Springfield, Illinois.
- Kath, J.A. 2002. The UNIMIN Corporation Magazine Mine: A novel Indiana bat (*Myotis sodalis*) hibernaculum in southern Illinois. *Transactions of the Illinois State Academy of Science* 95:303-310.
- Keir, J.R. and D.D. La Ronde. 1976. Observations of Swainson's hawk nesting in northeastern Illinois. *Wilson Bulletin* 88:658-659.
- Kennedy, E.D. and D.W. White. 1996. Interference competition from House Wrens as a factor in the decline of Bewick's Wrens. *Conservation Biology* 10:281-284.
- Kennedy, E.D. and D.W. White. 1997. Bewick's Wren (*Thryomanes bewickii*). *The Birds of North America*, No. 315. In A. Poole and F. Gill, editors. The Academy of Natural Sciences, Philadelphia, Pennsylvania, and The American Ornithologists' Union, Washington, D.C.
- Kennicott, R. 1855. Catalogue of animals observed in Cook County, Illinois. *Transactions of the Illinois State Agriculture Society* 1:577-595.
- Kessler, J.S., and W.M. Turner. 1980. Survey for the Indiana bat, *Myotis sodalis*, Bonpas Creek, Illinois. Unpublished report submitted to the Louisville District, U.S. Army Corps of Engineers.
- Kirkpatrick, R.D. 1980. Determination and habitat suitability for the Indiana bat (*Myotis sodalis*) and gray bat (*Myotis grisescens*) for a portion of Pipestem Creek, Perry County, Illinois. Unpublished report submitted to AMAX Coal Co., Indianapolis, Indiana.
- Kleen, V.M., L. Cordle, and R.A. Montgomery. 2004. *The Illinois Breeding Bird Atlas*. Illinois Natural History Survey Special Publication No. 26: xviii + 459 pages.
- Klimstra, W.D. 1969. Mammals of the Pine Hills-Wolf Lake-LaRue Swamp complex. *Natural History*

- Miscellanea, The Chicago Academy of Sciences 188:1-10.
- Klimstra, W.D., and J.L. Roseberry. 1969. Additional observations on some southern Illinois mammals. Transactions of the Illinois Academy of Sciences 62:413-417.
- Klimstra, W.D. and T.G. Scott. 1956. Distribution of the rice rat in southern Illinois. Natural History Miscellanea, The Chicago Academy of Sciences. 154:1-3.
- Kurta, A. 1995. Mammals of the Great Lakes Region-Revised Edition. University of Michigan Press, Ann Arbor, Michigan. 377pp.
- Kwak, T.J. 1991. Ecological characteristics of a northern population of the pallid shiner. Transactions of the American Fisheries Society 120:106-115.
- Large, T. 1903. A list of the native fishes of Illinois, with keys. Appendix to Report of the State Board of Fish Commissioners for Sept. 30, 1900 to Oct. 1, 1902. 30pp.
- LaVal, R.K., R.L. Clawson, M.L. LaVal, and W. Caire. 1977. Foraging behavior and nocturnal activity patterns of Missouri bats, with emphasis on the endangered species *Myotis grisescens* and *Myotis sodalis*. Journal of Mammalogy 58:592-599.
- Lewis, J.J. 2000. An evaluation of the status of the aquatic isopod *Caecidotea spatulata* in the vicinity of the Columbia Quarry Company Dupo Plant 9, St. Clair County, Illinois. Unpublished report submitted to the Illinois Department of Natural Resources, Springfield, Illinois.
- Lewis, J.J. and T.E. Bowman. 1981. The subterranean Asellids (*Caecidotea*) of Illinois (Crustacea: Isopoda: Asellidae). Smithsonian Contributions to Zoology. No. 335:iii+66pp.
- Lewis, J.J., P.L. Moss, and D.L. Tecic. 1999. A conservation focused evaluation of the imperiled troglobitic fauna of the Sinkhole Plain Karst of southwestern Illinois. Unpublished report submitted to The Nature Conservancy. 97pp.
- Lewis, J.J., P. Moss, D. Tecic, and M.E. Nelson. 2003. A conservation focused inventory of subterranean invertebrates of the southwestern Illinois karst. Journal of Cave and Karst Studies 65:9-21.
- Lewis, T.L. and O.J. Rongstad. 1992. The distribution of Franklin's ground squirrel in Wisconsin and Illinois. Transaction of the Wisconsin Academy of Science, Arts, and Letters 80:57-62.
- MacWhirter, R.B. and K.L. Bildstein. 1996. Northern Harrier (*Circus cyaneus*). The Birds of North America, No. 210. in A. Poole and F. Gills, editors. The Academy of Natural Sciences, Philadelphia, Pennsylvania, and The American Ornithologists' Union, Washington, D.C.
- Marti, C.D. 1992. Barn Owl (*Tyto alba*). The Birds of North America, No. 1. in A. Poole, P. Stettenheim, and F. Gills, editors. The Academy of Natural Sciences, Philadelphia, Pennsylvania, and The American Ornithologists' Union, Washington, D.C.
- Martin, J.M., E.J. Heske, and J.E. Hofmann. 2002. A status survey of the Franklin's ground squirrel (*Spermophilus franklinii*) in Illinois. Illinois Natural History Survey, Center for Biodiversity Technical Report 2002 (18). Unpublished report submitted to the Illinois Department of Natural Resources, Springfield, Illinois. 72pp.
- Martin, J.M., E.J. Heske, and J.E. Hofmann. 2003. Franklin's ground squirrel (*Spermophilus franklinii*) in Illinois: A declining prairie mammal? American Midland Naturalist 150:130-138.
- Mauger, D. 1987. Reconnaissance survey for the spotted turtle at Lockport and Romeoville Prairie Nature Preserves. Unpublished report submitted to the Forest Preserve District of Will County, Joliet, Illinois. 13pp.
- Mauger, D. 1988. Conservation of the spotted turtle (*Clemmys guttata* Schneider) in Illinois: a preliminary plan. Graduate research project, Conservation Biology, Governors State University, University Park, Illinois. 20pp.
- Mauger, D., T.P. Wilson and D. Stillwaugh Jr. 2002. Lessons learned from translocating spotted turtles (Illinois). Ecological Restoration 20:224-225.
- McClain, W.E., J.A. Kath, and J. Ebinger. 2002. Wolves, Creatures of Legend and Lore. The Illinois Steward 11:4-8.
- McGee, E., E.O. Moll, and D. Mauger. 1988. Baseline survey of a spotted turtle (*Clemmys guttata*) population at Romeoville Prairie Nature Preserve, Will County. Unpublished report submitted to the Forest Preserve District of Will County, Joliet, Illinois. 32pp.
- McLaughlin, C.A., and W.B. Robertson. 1951. A new record of the rice rat, *Oryzomys palustris palustris*, from southern Illinois. Natural History Miscellanea, The Chicago Academy of Sciences 80:1-2.
- McNicholl, M.K., P.E. Lowther, and J.A. Hall. 2001. Forster's tern (*Sterna forsteri*). The Birds of North America, No. 595. in A. Poole and F. Gill, editors. The Birds of North America, Inc., Philadelphia, Pennsylvania.
- Meanley, B. 1992. King Rail (*Rallus elegans*). The Birds of North America, No. 3. in A. Poole, P. Stettenheim, and F. Gill, editors. The Academy of Natural Sciences; Philadelphia, Pennsylvania, and The American Ornithologists' Union, Washington D.C.
- Minton, S.A.. 1972. Amphibians and reptiles of Indiana. Indiana Academy of Sciences Monograph 3:vi + 346pp.

- Mohlenbrock, R.H. and D.M. Ladd. 1978. Distribution of Illinois vascular plants. Southern Illinois University Press, Carbondale, Illinois. 282pp.
- Moll, D.L. 1977. Ecological investigations of turtles in a polluted ecosystem: the central Illinois River and adjacent floodplain lakes. Unpublished Doctoral Dissertation. Illinois State University, Bloomington-Normal, Illinois. xv + 179pp.
- Moll, D. and L.E. Brown. 1977. The mud turtle *Kinosternon flavescens spooneri* - nearly extinct in Illinois. Bulletin of the Chicago Herpetological Society 12:67-68.
- Moll, E.O. 1962. Recent herpetological records for Illinois. Herpetologica 18:207-209.
- Moll, E.O. 1982. Review of the Illinois mud turtle (*Kinosternon flavescens spooneri*) at known Illinois sites. Unpublished report submitted to the Illinois Department of Conservation, Springfield, Illinois. 13pp.
- Moll, E.O. 1988a. Investigations on the status and ecology of the largest-known population of *Kinosternon flavescens* in Illinois with recommendations for management. Unpublished report submitted to the Illinois Department of Conservation and Illinois Endangered Species Protection Board, Springfield, Illinois.
- Moll, E.O. 1988b. Status survey of three rare and endangered turtles in Illinois. Unpublished report submitted to the Illinois Endangered Species Protection Board, Springfield, Illinois. 25pp.
- Moll, E.O. 1997. Illinois' yellow mud turtle: curious, controversial, contradictory. Illinois Steward 6:(1)16-19.
- Moll, E.O., and M.A. Morris. 1991. Status of the river cooter, *Pseudemys concinna*, in Illinois. Transactions of the Illinois State Academy of Science 84:77-83.
- Monty, A-M. 1997. The eastern woodrat (*Neotoma floridana*) in southern Illinois: population assessment and genetic variation. Unpublished Doctoral Dissertation, Southern Illinois University, Carbondale, Illinois. xi+111pp.
- Monty, A-M., E.R. Wagle, R.E. Emerson, and G.A. Feldhamer. 1995. Recently discovered populations of eastern woodrats (*Neotoma floridana*) in southern Illinois. Transactions of the Illinois State Academy of Science 88:43-47.
- Morris, M.A. 1974. An Illinois record for a triploid species of the *Ambystoma jeffersonianum* complex. Journal of Herpetology 8:255-256.
- Morris, M.A., and R.A. Brandon. 1984. Gynogenesis and hybridization between *Ambystoma platineum* and *Ambystoma texanum* in Illinois. Copeia 1984:324-337.
- Morris, M.A. and P.W. Smith 1981. Endangered and threatened amphibians and reptiles. pages 21-33. In Bowles, M.L., editor. Endangered and threatened vertebrate animals and vascular plants of Illinois. Illinois Department of Conservation, Springfield, Illinois.
- Morris, M.A. and M.J. Sweet. 1985. Size, age, and growth of an alligator snapping turtle. *Macrochelys temminckii*, from Illinois. Transactions of the Illinois Academy of Sciences 78:241-245.
- Mumford, R.E. and J.O. Whitaker, Jr. 1982. Mammals of Indiana. Indiana University Press, Bloomington, Indiana. xvii+537pp.
- Musselman, T.E. 1937. Young black rail banded in Illinois. Auk 54:204.
- Nawrot, J.R. 1974. The southern Illinois woodrat: an endangered species. Unpublished Masters Thesis, Southern Illinois University, Carbondale, Illinois. vi+101pp.
- Nawrot, J.R., and W.D. Klimstra. 1976. Present and past distribution of the endangered southern Illinois woodrat (*Neotoma floridana illinoensis*). Natural History Miscellanea, The Chicago Academy of Sciences 196:1-12.
- Nawrot, J.R., and J. Spitzkeit. 1986. Eastern woodrat recovery - phase I: habitat protection and population enhancement. Final Report, Cooperative Wildlife Research Laboratory, Southern Illinois University, Carbondale, Illinois, USA.
- Needham, J.G., J.G. Westfall, Jr., and M.L. May. 2000. Dragonflies of North America. Scientific Publishers, Gainesville, Florida. xv+939pp.
- Nelson, E.W. 1876a. A partial catalogue of the fishes of Illinois. Bulletin of the Illinois State Laboratory of Natural History 1:33-52.
- Nelson, E.W. 1876b. Birds of north-eastern Illinois. Bulletin of the Essex Institute. 8:90-155.
- Nisbet, I. 2002. Common Tern (*Sterna hirundo*). The Birds of North America, No. 618. in A. Poole and F. Gill, editors. The Birds of North America, Inc., Philadelphia, Pennsylvania.
- O'Donnel, D.J. 1935. Annotated list of the fishes of Illinois. Illinois Natural History Survey Bulletin 20:473-500.
- Oesch R.D. 1984. Missouri Naiades: A guide to the mussels of Missouri. Missouri Department of Conservation. Jefferson City, Missouri. 270 pp.
- Opler, P.A. 1992. A field guide to eastern butterflies. Houghton Mifflin Co., Boston, Massachusetts. xvii+396pp.
- Ortmann, A.E. 1919. A monograph of the naiades of Pennsylvania. Part III, systematic account of the genera and species. Memoirs of the Carnegie Museum 8:1-384.

- Page, L.M. 1983. Handbook of darters. T.F.H. Publications, Inc. Neptune City, New Jersey. 271pp.
- Page, L.M. 1985a. The crayfishes and shrimps (Decapoda) of Illinois. Illinois Natural History Survey Bulletin 33:335-448.
- Page, L.M. 1985b. Present status and critical habitat for Illinois populations of the pugnose shiner, bluehead shiner, and harlequin darter. Illinois Natural History Survey, Section of Faunistic Surveys and Insect Identification Technical Report 1985(8), Unpublished Report submitted to the Illinois Department of Conservation, Springfield, Illinois. 12pp.
- Page, L.M. and B.M. Burr. 1973. Distributional records of the crayfishes *Cambarellus puer*, *C. shufeldtii*, *Procambarus gracilis*, *P. viaeviridis*, *Orconectes lancifer*, *O. bisectus*, and *O. rusticus*. Transactions of the Kentucky Academy of Science. 34:51-52.
- Page, L.M. and B.M. Burr. 1991. A field guide to freshwater fishes, North American north of Mexico. Houghton Mifflin Co., Boston, Massachusetts. xii+432pp.
- Page, L.M. and M.E. Retzer. 2002. The status of Illinois' rarest fishes and crustaceans. Transactions of the Illinois State Academy of Science 95:311-326.
- Panzer, R. 1986. Franklin's ground squirrel translocated to an Illinois prairie preserve. Restoration and Management Notes 4:27.
- Panzer, R. 1988. Managing prairie remnants for insect conservation. Natural Areas Journal 8:83-90.
- Parker, J.W. 1999. Mississippi Kite (*Ictinia mississippiensis*). The Birds of North America, No. 402. in A. Poole and F. Gill, editors. The Birds of North America, Inc., Philadelphia, Pennsylvania.
- Parmalee, P.W. 1959. Animal remains from the Modoc Rock Shelter Site, Randolph County, Illinois. pages 61-65 in M.L. Fowler, editor. Report of Investigation No. 8, Summary Report of the Modoc Rock Shelter, 1952, 1953, 1955, 1956. Illinois State Museum, Springfield, Illinois.
- Parmalee, P.W. 1967. The fresh-water mussels of Illinois. Illinois State Museum, Popular Science Series. VIII:ix+108pp.
- Parmalee, P.W., R.A. Bieri, and R.K. Mohrman. 1961. Mammal remains from an Illinois cave. Journal of Mammalogy 42:119.
- Peck, S.B. and K. Christiansen. 1990. Evolution and zoogeography of the invertebrate cave faunas of the Driftless Area of the Upper Mississippi River Valley of Iowa, Minnesota, Wisconsin, and Illinois, U.S.A. Canadian Journal of Zoology 68:73-88.
- Peck, S.B. and J.J. Lewis. 1977. Zoogeography and Evolution of the subterranean invertebrate faunas of Illinois and southeastern Missouri. National Speleological Society Bulletin 40:39-63.
- Pergams, O.R. and D. Nyberg. 2001. Museum collections of mammals corroborate the exceptional decline of prairie habitat in the Chicago region. Journal of Mammalogy. 82:984-992.
- Peterson, A. 1983. Observations on habitat selection by Henslow's sparrow in Broome County, New York. Kingbird 33:155-163.
- Pflieger, W.L. 1971. A distributional study of Missouri fishes. University of Kansas Publications, Museum of Natural History 20:225-570.
- Pflieger, W.L. 1975. The fishes of Missouri. Missouri Department of Conservation. viii+343pp.
- Phillips, C.A., R.A. Brandon, and E.O. Moll. 1999. Field guide to amphibians and reptiles of Illinois. Illinois Natural History Survey Manual 8. xvi + 282pp.
- Phillips, C.A., M.J. Dreslik, B.C. Jellen, and D.B. Shepard. 2003. Population and spatial ecology of the Eastern Massasauga Rattlesnake (*Sistrurus catenatus catenatus*) at Carlyle Lake, Clinton County, Illinois: Summary of the 2002-2003 field seasons. Unpublished Report submitted to the Illinois Department of Natural Resources, Springfield, Illinois.
- Phillips, C.A., M.J. Dreslik, J.R. Johnson, and J.E. Petzing. 2001. Application of population estimation to pond breeding salamanders. Transactions of the Illinois State Academy of Sciences 94:111-118.
- Phillips, C.A., C.M. Spolsky, and T. Uzzell. 1991. Reproduction, survival and genetic constitution of the polyploid mole salamanders of Kickapoo State Park. Unpublished report submitted to Illinois Department of Conservation, Springfield, Illinois. 10pp.
- Pollowy, T.R. 1992. An endangered species investigation and recovery plan for the silvery salamander (*Ambystoma platineum*) in Illinois. Unpublished Masters Thesis, University of Illinois, Urbana, Illinois. vi + 146pp.
- Post, S.L. 1991. Native Illinois species and related bibliography. Illinois Natural History Survey Bulletin 34:463-475.
- Pyle, R.M. 1981. National Audubon Society field guide to North American butterflies. Alfred A. Knopf, Inc., New York. 924pp.
- Redmer, M., L.E. Brown, and R.A. Brandon. 1999. Natural history of the bird-voiced treefrog (*Hyla avivoca*) and green treefrog (*Hyla cinerea*) in southern Illinois. Illinois Natural History Survey Bulletin 36:37-66.
- Retzer, M.E. and C.R. Kowalik. 2002. Recent changes in the distribution of river redhorse (*Moxostoma carinatum*) and greater redhorse (*Moxostoma valenciennesi*) (Cypriniformes: Catostomidae) in Illinois

- and comments on their natural history. *Transactions of the Illinois State Academy of Science* 95:327-333.
- Rhoades, R. 1944. The crayfishes of Kentucky, with notes on variation, distribution and descriptions of new species and subspecies. *American Midland Naturalist* 31:111-149.
- Ridgway, R. 1889. The ornithology of Illinois. Part I. *Natural History Survey of Illinois*. viii+520pp.
- Ridgway, R. 1895. The ornithology of Illinois. Vol. II. *Natural History Survey of Illinois*. 282pp.
- Ridgway, R. 1915. Bird-life in southern Illinois IV. Changes which have taken place in half a century. *Bird-Lore* 17:191-198.
- Robbins, C.S., D.K. Dawson, and B.A. Dowell. 1989. Habitat area requirements of breeding forest birds of the middle Atlantic states. *Wildlife Monographs* 103:1-34.
- Robbins, C.S., J.W. Fitzpatrick, and P.B. Hamel. 1992. A warbler in trouble: *Dendroica cerulea*. pages 549-562. in J.M. Hagen, III and D.W. Johnston, editors. *Ecology and Conservation of Neotropical Migrant Landbirds*. Smithsonian Institution Press, Washington, D.C.
- Rodgers, J.A., Jr. and H.T. Smith. 1995. Set-back distances to protect nesting bird colonies from human disturbances in Florida. *Conservation Biology* 9:89-99.
- Roseberg, K.V., S.E. Barker, and R.W. Rohrbaugh. 2000. An atlas of Cerulean Warbler populations. Final report to USFWS:1997-2000 breeding seasons. U.S. Fish & Wildlife Service, Washington, D.C.
- Ross, D.A. and R.K. Anderson. 1990. Habitat use, movements, and nesting of *Emydoidea blandingi* in central Wisconsin. *Journal of Herpetology* 24:6-12.
- Rowe, J.W. 1987. Seasonal and daily activity in a population of Blanding's turtle (*Emydoidea blandingi*) in northern Illinois. Unpublished Masters Thesis, Eastern Illinois University, Charleston, Illinois. v + 86pp.
- Rowe, J.W. and E.O. Moll. 1991. A radiotelemetric study of activity and movement of the Blanding's turtle (*Emydoidea blandingi*) in northeastern Illinois. *Journal of Herpetology* 25:178-185.
- Rubin, C.S. 2000. Ecology and genetics of Blanding's turtles in an urban landscape. Unpublished Doctoral Dissertation, University of Illinois, Urbana-Champaign, Illinois. 125pp.
- Rubin, C.S., R.E. Warner, and D.R. Ludwig. 2001. Habitat use and movements of radiotagged Blanding's turtles (*Emydoidea blandingi*) in a suburban landscape. *Chelonian Conservation and Biology* 4:136-141.
- Russell, R. 1973. The extirpation of the piping plover as a breeding species in Illinois and Indiana. *Illinois Audubon Bulletin* 165:46-48.
- Sauer, J.R., J.E. Hines, and J. Fallon. 2003. The North American Breeding Bird Survey, results and analysis 1966-2003. Version 2003.1 USGS Patuxent Wildlife Research Center, Laurel, Maryland.
- Schroeder, M.A. and L.A. Robb. 1993. Greater Prairie-Chicken (*Tympanuchus cupido*). The Birds of North America, No. 36. In A. Poole, P. Stettenheim, and F. Gill, editors. The Academy of Natural Sciences, Philadelphia, Pennsylvania, and The American Ornithologists' Union, Washington D.C.
- Schwartz, A., and E.P. Odum. 1957. The woodrats of the eastern United States. *Journal of Mammalogy* 38:197-206.
- Schwartz, C.W., and E.R. Schwartz. 1981. The wild mammals of Missouri. Second edition. University of Missouri Press, Jefferson City, and Missouri Conservation Commission, Columbia. viii+356pp.
- Schweitzer, D. 1993. Regal Fritillaries in the east. *American Butterflies* 1:9.
- Sedman, Y., and D.F. Hess. 1985. The butterflies of west central Illinois. Western Illinois University, Macomb, Illinois, Series in the Biological Sciences No. 11:1-120.
- Seegert, G. 1986. Rediscovery of the greater redhorse (*Moxostoma valenciennesi* Jordan) (Cypriniformes: Catostomidae) in Illinois. *Transactions of the Illinois Academy of Science* 79:293-294.
- Seegert, G. 1990. The status of the pugnose shiner, *Notropis anogenus*, in Lake County, Illinois. Unpublished report submitted to the Illinois Department of Conservation, Springfield, Illinois.
- Seegert, G. 1991a. A survey of the greater redhorse in the Fox River. Unpublished report submitted to the Illinois Department of Conservation, Springfield, Illinois. 4pp.
- Seegert, G. 1991b. A survey of the greater redhorse in the Vermilion River. Unpublished report submitted to the Illinois Department of Conservation, Springfield, Illinois.
- Sharp, B. 1986. Management guidelines for the Swainson's hawk. U.S. Fish and Wildlife Service. Region 1, Portland, Oregon.
- Shull, E.M. 1987. The butterflies of Indiana. Indiana Academy of Science, Indiana University Press, Bloomington, Indiana. viii+262pp.
- Skaggs, D.M. 1973. Occurrence of Vespertilionid bats in some natural and man-made caverns of west-central Illinois. Unpublished Masters Thesis, Western Illinois University, Macomb, Illinois. viii+53pp.
- Skelly, T.M. and M.J. Sule. 1983. The pallid shiner, *Notropis amnis* Hubbs and Greene, a rare Illinois fish. *Transactions of the Illinois Academy of Science* 76:131-140.

- Skinner, R.M. 1975. Grassland use patterns and prairie bird populations in Missouri. pages 171-180. in M.K. Wali, editor. *Prairie: a Multiple View*. The University of North Dakota Press, Grand Forks, North Dakota.
- Smith, J.W. and R.B. Renken. 1991. Least Tern nesting habitat in the Mississippi River valley adjacent to Missouri. *Journal of Field Ornithology* 62:497-504.
- Smith, P.W. 1951. A new frog and a new turtle from western Illinois sand prairies. *Bulletin of Chicago Academy of Sciences* 9:189-199.
- Smith, P.W. 1961. The amphibians and reptiles of Illinois. *Illinois Natural History Survey Bulletin* 28:1-298.
- Smith, P.W. 1966. *Pseudacris streckeri*. *Catalogue of American amphibians and reptiles*. 27.1-27.2.
- Smith, P.W. 1968. An assessment of changes in the fish fauna of two Illinois Rivers and its bearing on their future. *Transactions of the Illinois Academy of Science* 61:31-45.
- Smith, P.W. 1971. Illinois streams: a classification based on their fishes and an analysis of factors responsible for disappearance of native species. *Illinois Natural History Survey Biological Notes* 76:1-14.
- Smith, P.W. 1979. *The fishes of Illinois*. University of Illinois Press, Urbana, Illinois. xxix+314pp.
- Smith, P.W. and W.L. Burger. 1950. Additional noteworthy herpetological records for Illinois. *Natural History Miscellanea, The Chicago Academy of Sciences* 56:1-3.
- Smith, P.W. and H.M. Smith. 1962. The systematic and biogeographic status of two Illinois snakes. C. C. Adams Center for Ecological Studies, Occasional Papers. 5:1-10.
- Starrett, W.C. 1971. A survey of the mussels (Unionacea) of the Illinois River: a polluted stream. *Illinois Natural History Survey Bulletin* 30:267-403.
- Stein, H.A. and P.W. Smith. 1959. The hellbender, *Cryptobranchus alleganiensis*, in Illinois. *Copeia* 1959:178-179.
- Stern, E. 1982. Higgin's eye mussel recovery plan. U.S. Fish and Wildlife Service, Atlanta, Georgia. 98pp.
- Sutton, T.M. and S.H. Bowen. 1994. Significance of organic detritus in the diet of larval lampreys in the Great Lakes basin. *Canadian Journal of Fisheries and Aquatic Science* 51:2380-2387.
- Swayne, J.R. 1949. A population survey of small mammals in southwestern Illinois. Unpublished Masters Thesis, Southern Illinois University, Carbondale, Illinois. 90pp.
- Sweet, M.J., R.W. Axtell, R. Brandon, E.O. Moll, R. Pawley, R.W. Nyboer, W. McClain, L. Meyer, and D. McFall. 1985. *State of Illinois Recovery Plan: Illinois mud turtle (Kinosternon flavescens spooneri)*. Unpublished report submitted to the Illinois Department of Conservation, Springfield, Illinois. 21+11pp.
- Tacha, T.C., S.A. Nesbitt, and P.A. Vohs. 1992. Sandhill Crane (*Grus canadensis*). *The Birds of North America*, No. 31. in A. Poole, P. Stettenheim, and F. Gill, editors. The Academy of Natural Sciences, Philadelphia, Pennsylvania, and The American Ornithologists' Union, Washington D.C.
- Taubert, B.D., P.W. Shetley, D.P. Philipp and T. Harrison. 1981. Breeding biology and distribution of the Illinois chorus frog (*Pseudacris streckeri illinoensis*) in Illinois. Unpublished report submitted to the Illinois Department of Conservation, Springfield, Illinois. iv+163pp.
- Taylor, S.J. and D.W. Webb. 2000. Subterranean Amphipoda (Crustacea) of Illinois' Salem Plateau: spatial and temporal components of microdistribution. *Illinois Natural History Survey, Center for Biodiversity, Technical Report* 2000(27):1-62.
- Todd, R.L. 1977. Black rail, little black rail, black crake, Farallon rail. pages 71-83. in G.C. Sanderson, editor. *Management of migratory shore and upland game birds in North America*. International Association of Fish and Wildlife Agencies, Washington, D.C.
- Toland, B.R. 1986. Nesting ecology of Northern Harriers in southwest Missouri. *Missouri Academy of Sciences Transactions* 20:49-57.
- Trautman, M.B. 1957. *The fishes of Ohio*. Ohio State University Press, Columbus, Ohio. xii+683pp.
- Tuma, M.W. 1993. Ecology of the state endangered yellow mud turtle, *Kinosternon flavescens* in Henry Co., Illinois. Unpublished Masters Thesis. Eastern Illinois University, Charleston, Illinois. vi + 58pp.
- Tuttle, M.D. 1976a. Population ecology of the gray bat (*Myotis grisescens*): philopatry, timing, and patterns of movement, weight loss during migration, and seasonal adaptive strategies. *Occasional Papers of the Museum of Natural History, The University of Kansas* 54:1-38.
- Tuttle, M.D.. 1976b. Population ecology of the gray bat (*Myotis grisescens*): factors influencing growth and survival of newly volant young. *Ecology* 57:587-595.
- Tuttle, M.D. 1979. Status, cause of decline, and management of endangered gray bats. *Journal of Wildlife Management* 43:1-17.
- Twedt, D.J. and R.D. Crawford. 1995. Yellow-headed Blackbird (*Xanthocephalus xanthocephalus*). *The Birds of North America*, No. 192. in A. Poole and F. Gill, editors. The Academy of Natural Sciences, Philadelphia, Pennsylvania, and The American Ornithologists' Union, Washington D.C.
- U.S. Fish and Wildlife Service (USFWS). 1999. Agency Draft Indiana Bat (*Myotis sodalis*) Revised Recovery Plan. Fort Snelling, Minnesota. 53pp.

- U.S. Fish and Wildlife Service (USFWS). 2001. Endangered and Threatened Wildlife and Plants; final determination of critical habitat for the Great Lakes breeding population of the Piping Plover. Federal Register 66:22938-22969.
- Uzzell, T. 1967. *Ambystoma platineum*. Catalogue of American amphibians and reptiles. 49:1-49.2.
- Van Petten, A. and P. Schramm. 1972. Introduction, dispersal, and population increase of the Franklin's ground squirrel, *Spermophilus franklinii*, in a restored prairie. pages 166-173. in J.H. Zimmerman, editor. Proceedings of the second Midwest Prairie Conference, Madison, Wisconsin.
- Wagle, E.R. 1996. Population assessment and feeding habits of the eastern woodrat (*Neotoma floridana*) in southern Illinois. Unpublished Masters Thesis, Southern Illinois University, Carbondale, Illinois. ix+76pp.
- Wagle, E.R., and G.A. Feldhamer. 1997. Feeding habits of the eastern woodrat (*Neotoma floridana*) in southern Illinois. Transactions of the Illinois State Academy of Science 90: 171-177.
- Walk, J.W., T.L. Esker, and S.A. Simpson. 1999. Continuous nesting of Barn Owls in Illinois. Wilson Bulletin 111:572-573.
- Walk, J.W. and R.E. Warner. 1999. Effects of habitat area on the occurrence of grassland birds in Illinois. American Midland Naturalist 141:339-344.
- Ward, M.P. 2004. Habitat selection by yellow-headed blackbirds. Unpublished Doctoral Dissertation, University of Illinois, Champaign-Urbana, Illinois.
- Warren, M.L., Jr. 1989. Geographic variation of the spotted sunfish, *Lepomis punctatus* complex (Centrarchidae), with recognition of phylogenetic species. Unpublished Doctoral Dissertation, Southern Illinois University, Carbondale, Illinois. xxvii+283pp.
- Warren, M.L., Jr. and B.M. Burr. 1988. Reassessment of the Illinois ranges of the bigeye chub, *Hybopsis amblops*, and the pallid shiner, *Notropis amnis*. Ohio Journal of Science 88:181-183.
- Warren, M.L., Jr. and B.M. Burr. 1989. Distribution, abundance, and status of the cypress minnow, *Hybognathus hayi*, an endangered Illinois species. Natural Areas Journal 9:163-168.
- Watters, G.T. 1987a. Element stewardship abstract for *Pleurobema clava* - northern club shell. Unpublished report submitted to The Nature Conservancy, Minneapolis, Minnesota. 5pp.
- Watters, G.T. 1987b. Element stewardship abstract for *Simpsonaias ambigua* - salamander mussel. Unpublished report submitted to The Nature Conservancy, Minneapolis, Minnesota. 5pp.
- Watts, B.D. 1995. Yellow-crowned Night-Heron (*Nyctanassa violacea*). The Birds of North America, No. 161. in A. Poole and F. Gill, editors. The Academy of Natural Sciences, Philadelphia, Pennsylvania, and The American Ornithologists' Union, Washington, D.C.
- Webb, D.W., L.M. Page, S.J. Taylor, and J.K. Krejca. 1998. The current status and habitats of the Illinois Cave Amphipod, *Gammarus acherondytes* Hubricht and Mackin (Crustacea: Amphipoda). Journal of Cave and Karst Studies 60:172-178.
- Webb, D.W., S.J. Taylor, and J.K. Krejca. 1993. The biological resources of Illinois caves and other subterranean environments. Illinois Natural History Survey, Center for Biodiversity, Technical Report 1993 (8):vii+143pp.
- Weller, W.F., W.G. Sprules, and T.P. Lamarre. 1978. Distribution of salamanders of the *Ambystoma jeffersonianum* complex in Ontario. Canadian Field Naturalist 92:174-181.
- West, K.A. 1986. Illinois eastern woodrat population survey report. Unpublished report submitted to the Illinois Endangered Species Protection Board, Springfield, Illinois.
- Westemeier, R.L. 1972. Prescribed burning in grassland management for prairie chickens in Illinois. Proceedings Annual Tall Timbers Fire Ecology Conference 12: 317-338.
- Westemeier, R.L., J.D. Brawn, S.A. Simpson, T.L. Esker, R.W. Jansen, J.W. Walk, E.L. Kershner, J.L. Bouzat, and K.N. Paige. 1998. Tracking the long-term decline and recovery of an isolated population. Science 282:1695-1698.
- Westemeier, R.L. and J.E. Buhnerkempe. 1983. Responses of nesting wildlife to prairie grass management on prairie chicken sanctuaries in Illinois. pages 39-46. in R. Brewer, editor. Proceedings of the Eighth North American Prairie Conference. Western Michigan University, Kalamazoo, Michigan.
- Westemeier, R.L. and W.R. Edwards. 1987. Prairie-chickens: survival in the Midwest. pages 119-131. in H. Kallman, editor. Restoring America's wildlife 1937-1987: the first 50 years of the Federal Aid in Wildlife Restoration (Pittman-Robertson) Act. United States Department of the Interior, Fish and Wildlife Service. U.S. Government Printing Office, Washington, D.C.
- Wetzel, J.E. and W.J. Poly. 2000. Range expansion of Golden Crayfish, *Orconectes luteus*, in the Mississippi River. Journal of Freshwater Ecology 15:281-282.
- Whitaker, J.O., Jr. 1975. Bats of the caves and mines of the Shawnee National Forest of southern Illinois, with particular emphasis on *Myotis sodalis*, the Indiana bat. pages 25-64. in E. Ownse, editor. Distributional studies of the Indiana bat (*Myotis sodalis*) on three National Forests of the eastern region. U.S.

Department of Agriculture, Forest Service Eastern Region, Milwaukee, Wisconsin.

White, J. 1991. Estimated potential ranges. Endangered and threatened invertebrate animals of Illinois, excluding mussels. Unpublished report submitted to the Illinois Department of Conservation, Springfield, Illinois.

Widmann, O. 1907. A preliminary catalogue of the birds of Missouri. Transactions of the Academy of Science of St. Louis 17:1-288.

Wiens, J.A. 1969. An approach to the study of ecological relationships among grassland birds. Ornithological Monographs No. 8:1-93.

Wiley, R.W. 1980. *Neotoma floridana*. Mammalian Species 139:1-7.

Wilsman, L.A. and M.A. Sellers, Jr. 1988. *Clonophis kirtlandii* rangewide survey. Unpublished report submitted to the United States Fish and Wildlife Service, Region 3, Office of Endangered Species, Twin Cities, Minnesota.

Wilson, L.D. 1973. *Masticophis flagellum*. Catalogue of American amphibians and reptiles. 145.1-145.2.

Wilson, T.P. 1994. Ecology of the spotted turtle, *Clemmys guttata* at the western range limit. Unpublished Masters Thesis. Eastern Illinois University, Charleston, Illinois. vii + 97pp.

Wu, S-K., R.D. Oesch, and M.E. Gordon. 1997. Missouri aquatic snails. Missouri Department of Conservation Natural History Series No. 5. Jefferson City, Missouri.

Yarrow, H.C. 1882. Check-list of North American reptilia and batrachia, with catalogue of specimens in the U.S. National Museum. Bulletin of the United States National Museum 24:1-249.

Zimmerman, J.L. 1988. Breeding season habitat selection by the Henslow's sparrow (*Ammodramus henslowii*) in Kansas. Wilson Bulletin 100:17-24.

INDEX

<i>Acipenser fulvescens</i>	42	Crayfish, Indiana	31
<i>Aflexia rubranura</i>	36	Kentucky	32
<i>Alasmidonta viridis</i>	14	Shrimp	32
<i>Ambystoma jeffersonianum</i>	67	<i>Crotalus horridus</i>	70
<i>platineum</i>	68	<i>Cryptobranchus alleganiensis</i>	70
<i>Ammocrypta clarum</i>	43	<i>Cumberlandia monodonta</i>	14
<i>pellucidum</i>	44	<i>Cyclonaias tuberculata</i>	15
<i>Ammodramus henslowii</i>	82	<i>Cyprogenia stegaria</i>	15
Amphipod, Anomalous Spring	30	Darter, Bluebreast	48
Illinois Cave	31	Eastern Sand	44
Iowa	34	Harlequin	50
Packard's Cave	30	Iowa	48
<i>Asio flammeus</i>	83	Western Sand	43
<i>Atrytone arogos</i>	37	<i>Dendroica cerulea</i>	89
<i>Bartramia longicauda</i>	84	<i>Desmognathus conanti</i>	71
Bat, Gray	111	<i>Discus macclintocki</i>	12
Indiana	112	Dragonfly, Hine's Emerald	35
Rafinesque's Big-eared	109	Elfin Skimmer	35
Bittern, American	85	Eagle, Bald	93
Least	94	Egret, Snowy	90
Blackbird, Yellow-headed	107	<i>Egretta caerulea</i>	89
Blue, Karner	40	<i>thula</i>	90
Borer, Eryngium Stem	41	<i>Elaphe emoryi</i>	71
<i>Botaurus lentiginosus</i>	85	<i>Ellipsaria lineolata</i>	16
<i>Buteo swainsoni</i>	86	<i>Elliptio crassidens</i>	16
<i>Caecidotea lesliei</i>	29	<i>dilatata</i>	17
<i>spatulata</i>	29	<i>Emydoidea blandingii</i>	72
<i>Calephelis muticum</i>	37	<i>Epioblasma triquetra</i>	18
<i>Canis lupus</i>	108	<i>Erimystax x-punctatus</i>	47
<i>Catostomus catostomus</i>	45	<i>Etheostoma camurum</i>	48
<i>Charadrius melodus</i>	87	<i>exile</i>	48
<i>Chlidonias niger</i>	88	<i>histrion</i>	50
Chub, Bigeye	54	<i>Falco peregrinus</i>	91
Gravel	47	Falcon, Peregrine	91
River	60	<i>Fontigena antroecetes</i>	13
Sturgeon	59	Fritillary, Regal	39
<i>Circus cyaneus</i>	88	Frog, Illinois Chorus	78
Cisco	46	Bird-voiced Tree-	74
<i>Clemmys guttata</i>	69	<i>Fundulus diaphanus</i>	51
<i>Clonophis kirtlandii</i>	69	<i>dispar</i>	52
Coachwhip	77	<i>Fusconaia ebena</i>	19
Cooter, River	79	<i>Gallinula chloropus</i>	92
<i>Coregonus artedi</i>	46	<i>Gammarus acherondytes</i>	31
<i>Corynorhinus rafinesquii</i>	109	<i>Gastrophryne carolinensis</i>	73
Crane, Sandhill	92	<i>Grus canadensis</i>	92
<i>Crangonyx anomalus</i>	30	<i>Haliaeetus leucocephalus</i>	93
<i>packardi</i>	30	Harrier, Northern	88
Crayfish, Bigclaw	34	Hawk, Swainson's	86

Hellbender	70	Ebonysshell	19
<i>Hemidactylum scutatum</i>	73	Elephant-ear	16
Heron, Black-crowned Night	98	Fanshell	15
Little Blue	89	Fat Pocketbook	24
Yellow-crowned Night	97	Higgins Eye	20
<i>Hesperia metea</i>	38	Kidneyshell	25
<i>otloe</i>	38	Little Spectaclecase	28
Hoary Elfin	39	Ohio Pigtoe	23
<i>Heterodon nasicus</i>	74	Orangefoot Pimpleback	22
<i>Hybognathus hayi</i>	53	Pink Mucket	19
<i>Hybopsis amblops</i>	54	Purple Wartyback	15
<i>amnis</i>	55	Purple Lilliput	26
<i>Hyla avivoca</i>	74	Rabbitsfoot	25
<i>Ichthyomyzon fossor</i>	56	Rainbow	27
<i>Ictinia mississippiensis</i>	94	Salamander	26
<i>Incisalia polios</i>	39	Sheepnose	22
Isopod	29	Slippershell	14
<i>Ixobrychus exilis</i>	94	Snuffbox	18
Killifish, Banded	51	Spectaclecase	14
<i>Kinosternon flavescens</i>	75	Spike	17
Kite, Mississippi	94	Wavy-rayed Lamp-	20
<i>Lampetra aepyptera</i>	56	<i>Myotis austroriparius</i>	110
Lamprey, Least Brook	56	<i>grisescens</i>	111
Northern Brook	56	<i>sodalis</i>	112
<i>Lampsilis abrupta</i>	19	<i>Myotis</i> , Southeastern	110
<i>fasciola</i>	20	<i>Nannothemis bella</i>	35
<i>higginsii</i>	20	<i>Neotoma floridana</i>	113
<i>Lanius ludovicianus</i>	95	<i>Nerodia cyclopion</i>	77
<i>Laterallus jamaicensis</i>	96	<i>fasciata</i>	78
Leafhopper	36	<i>Nocomis micropogon</i>	60
Redveined Prairie	36	<i>Notropis anogenus</i>	61
<i>Lepomis miniatus</i>	57	<i>boops</i>	61
<i>symmetricus</i>	58	<i>chalybaeus</i>	62
<i>Ligumia recta</i>	21	<i>heterodon</i>	62
<i>Limnothlypis swainsonii</i>	97	<i>heterolepis</i>	63
<i>Lycaeides melissa samuelis</i>	40	<i>maculatus</i>	64
<i>Macrhybopsis gelida</i>	59	<i>texanus</i>	64
<i>Macrochelys temminckii</i>	76	<i>Noturus stigmosus</i>	65
Madtom, Northern	65	<i>Nyctanassa violacea</i>	97
Massasauga, Eastern	80	<i>Nycticorax nycticorax</i>	98
<i>Masticophis flagellum</i>	77	<i>Ochrotomys nuttalli</i>	114
Metalmark, Swamp	37	<i>Orconectes indianensis</i>	31
Minnow, Cypress	53	<i>kentuckiensis</i>	32
Moorhen, Common	92	<i>lancifer</i>	32
Mouse, Golden	114	<i>placidus</i>	34
<i>Moxostoma carinatum</i>	59	<i>Oryzomys palustris</i>	115
<i>valenciennesi</i>	60	Osprey	98
Mussel, Black Sandshell	21	Owl, Barn	106
Butterfly	16	Short-eared	83
Clubshell	23	<i>Pandion haliaetus</i>	98

<i>Papaipema eryngii</i>	41	Western Hognose	74
<i>Paraphlepsius lupalus</i>	36	Great Plains Rat-	71
Phalarope, Wilson's	99	<i>Somatochlora hineana</i>	35
<i>Phalaropus tricolor</i>	99	Sparrow, Henslow's	82
<i>Plethobasus cooperianus</i>	22	<i>Spermophilus franklinii</i>	116
<i>cyphus</i>	22	<i>Speyeria idalia</i>	39
<i>Pleurobema clava</i>	23	Squirrel, Franklin's Ground	116
<i>cordatum</i>	23	<i>Sterna antillarum</i>	100
Plover, Piping	87	<i>forsteri</i>	101
<i>Potamilus capax</i>	24	<i>hirundo</i>	102
Prairie-Chicken, Greater	105	Sturgeon, Lake	42
<i>Pseudacris streckeri</i>	78	Pallid	66
<i>Pseudemys concinna</i>	79	<i>Stygobromus iowae</i>	34
<i>Ptychobranhus fasciolaris</i>	25	Sucker, Longnose	45
<i>Quadrula cylindrica</i>	25	Sunfish, Bantam	58
Rail, Black	96	Redspotted	57
King	100	<i>Tantilla gracilis</i>	80
<i>Rallus elegans</i>	100	Tern, Black	88
Rat, Rice	115	Common	102
Redhorse, Greater	60	Forster's	101
River	59	Least	100
Salamander, Four-toed	73	<i>Thamnophis sauritus</i>	81
Jefferson	67	<i>Thryomanes bewickii</i>	103
Silvery	68	Toad, Eastern Narrowmouth	73
Spotted Dusky	71	Topminnow, Starhead	52
Sandpiper, Upland	84	<i>Toxolasma lividus</i>	26
<i>Scaphirhynchus albus</i>	66	<i>Tropidoclonion lineatum</i>	81
<i>Simpsonaias ambigua</i>	26	Turtle, Alligator Snapping	76
<i>Sistrurus catenatus</i>	80	Blanding's	72
Shiner, Bigeye	61	Illinois Mud	75
Blackchin	62	Spotted	69
Blacknose	63	<i>Tympanuchus cupido</i>	105
Ironcolor	62	<i>Tyto alba</i>	106
Pallid	55	<i>Villosa iris</i>	27
Pugnose	61	<i>lienosa</i>	28
Taillight	64	Warbler, Cerulean	89
Weed	64	Swainson's	97
Shrike, Loggerhead	95	Wolf, Gray/Timber	108
Skipper, Arogos	37	Wood Rat, Eastern	113
Cobweb	38	Wren, Bewick's	103
Ottoe	38	<i>Xanthocephalus xanthocephalus</i>	107
Snail, Hydrobiid Cave	13		
Snail, Iowa Pleistocene	12		
Snake, Broad-banded Water-	78		
Eastern Ribbon-	81		
Flathead	80		
Kirtland's	69		
Lined	81		
Mississippi Green Water-	77		
Timber Rattle-	70		

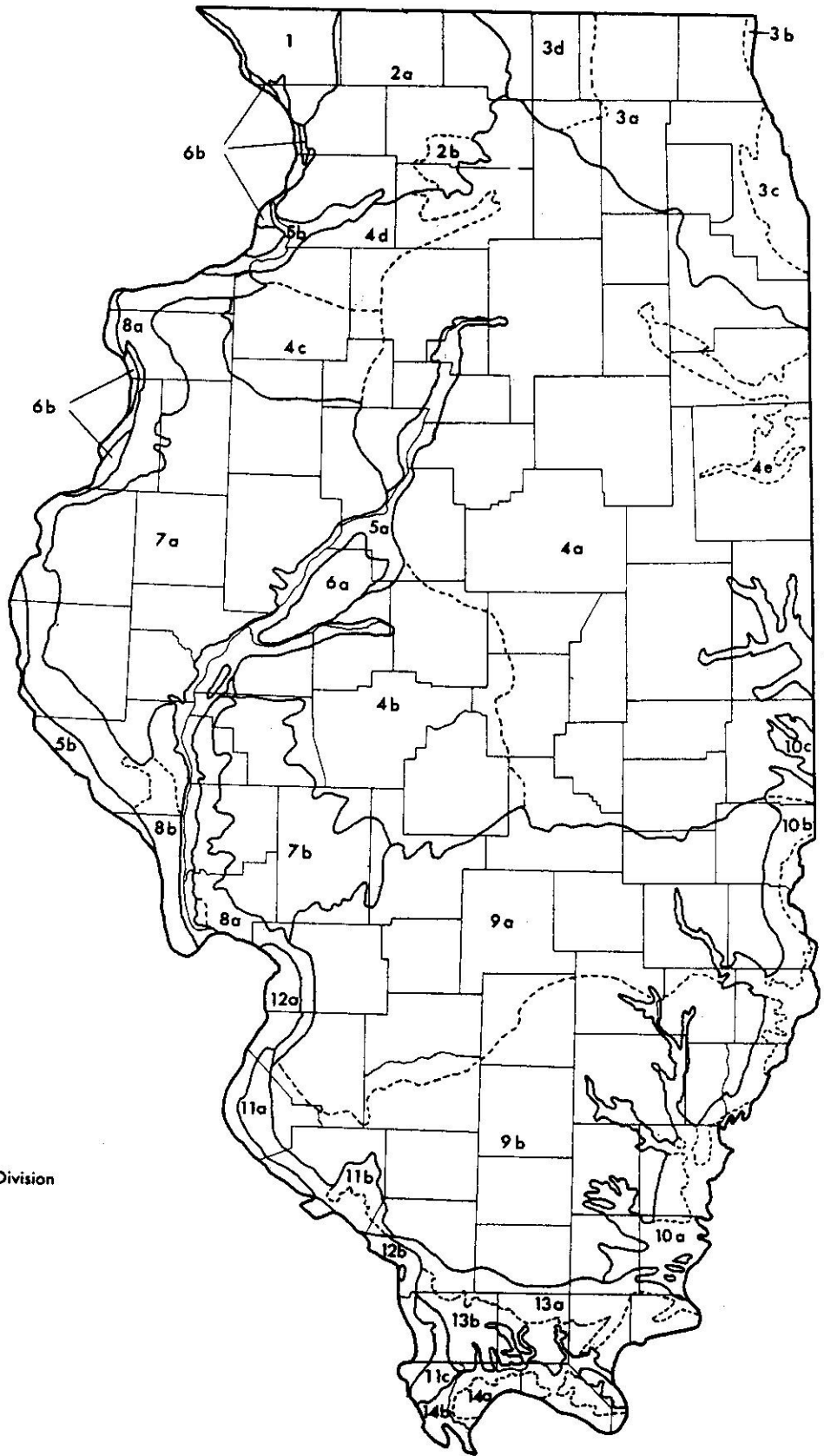
APPENDIX I

WISCONSIN



APPENDIX II THE NATURAL DIVISIONS OF ILLINOIS

- 1** Wisconsin Driftless Division
- 2** Rock River Hill Country Division
 - a Freeport Section
 - b Oregon Section
- 3** Northeastern Morainal Division
 - a Morainal Section
 - b Lake Michigan Dunes Section
 - c Chicago Lake Plain Section
 - d Winnebago Drift Section
- 4** Grand Prairie Division
 - a Grand Prairie Section
 - b Springfield Section
 - c Western Section
 - d Green River Lowland Section
 - e Kankakee Sand Area Section
- 5** Upper Mississippi River and Illinois River Bottomlands Division
 - a Illinois River Section
 - b Mississippi River Section
- 6** Illinois River and Mississippi River Sand Areas Division
 - a Illinois River Section
 - b Mississippi River Section
- 7** Western Forest-Prairie Division
 - a Galesburg Section
 - b Carlinville Section
- 8** Middle Mississippi Border Division
 - a Glaciated Section
 - b Driftless Section
- 9** Southern Till Plain Division
 - a Effingham Plain Section
 - b Mt Vernon Hill Country Section
- 10** Wabash Border Division
 - a Bottomlands Section
 - b Southern Uplands Section
 - c Vermilion River Section
- 11** Ozark Division
 - a Northern Section
 - b Central Section
 - c Southern Section
- 12** Lower Mississippi River Bottomlands Division
 - a Northern Section
 - b Southern Section
- 13** Shawnee Hills Division
 - a Greater Shawnee Hills Section
 - b Lesser Shawnee Hills Section
- 14** Coastal Plain Division
 - a Cretaceous Hills Section
 - b Bottomlands Section



Schwegman, John E. principal author. 1973. Comprehensive Plan for the Illinois Nature Preserves System, Part 2. The Natural Divisions of Illinois. Illinois Nature Preserves Commission, Rockford. 32pp.

Appendix III- Taxonomic Listing of Endangered and Threatened Animal Species by Class and Family

Threatened species are designated with an asterisk (*), all other species are endangered.

GASTROPODA

DISCIDAE

Discus macclintocki

HYDROBIIDAE

Fontigens antroecetes

BIVALVIA

UNIONIDAE

*Alasmidonta viridis**
Cumberlandia monodonta
*Cyclonaias tuberculata**
Cyprogenia stegaria
*Ellipsaria lineolata**
*Elliptio crassidens**
*Elliptio dilatata**
Epioblasma triquetra
*Fusconaia ebena**
Lampsilis abrupta
Lampsilis fasciola
Lampsilis higginsii
*Ligumia recta**
Plethobasus cooperianus
Plethobasus cyphus
Pleurobema clava
Pleurobema cordatum
Potamilus capax
Ptychobranchus fasciolaris
Quadrula cylindrica
Simpsonaias ambigua
Toxolasma lividus
Villosa iris
*Villosa lienosa**

MALACOSTRACA

ASELLIDAE

Caecidotea lesliei
Caecidotea spatulata

CRANGONYCTIDAE

Crangonyx anomalus
Crangonyx packardi

GAMMARIDAE

Gammarus acherondytes

Stygobromus iowae

CAMBARIDAE

Orconectes indianensis
Orconectes kentuckiensis
Orconectes lancifer
Orconectes placidus

INSECTA

LIBELLULIDAE

*Nannothemis bella**

CORULIIDAE

Somatochlora hineana

CICADELLIDAE

*Aflexia rubranura**
Paraphlepsius lupalus

HESPERIIDAE

Atrytone arogos
*Hesperia metea**
*Hesperia ottoe**

RIODINIDAE

Calephelis muticum

NYMPHALIDAE

*Speyeria idalia**

LYCAENIDAE

Incisalia polios
Lycaeides melissa samuelis

NOCTUIDAE

Papaipema eryngii

AGNATHA

PETROMYZONTIDAE

Ichthyomyzon fossor
*Lampetra aepyptera**

OSTEICHTHYES

ACIPENSERIDAE

Acipenser fulvescens
Scaphirhynchus albus

SALMONIDAE

*Coregonus artedi**

CYPRINIDAE

*Erimystax x-punctatus**

Hybognathus hayi

Hybopsis amblops

Hybopsis amnis

Macrhybopsis gelida

Nocomis micropogon

Notropis anogenus

Notropis boops

*Notropis chalybaeus**

*Notropis heterodon**

Notropis heterolepis

Notropis maculatus

Notropis texanus

CATOSTOMIDAE

*Catostomus catostomus**

*Moxostoma carinatum**

Moxostoma valenciennesi

ICTALURIDAE

Noturus stigmosus

CYPRINODONTIDAE

*Fundulus diaphanus**

*Fundulus dispar**

CENTRARCHIDAE

*Lepomis miniatus**

*Lepomis symmetricus**

PERCIDAE

Ammocrypta clarum

*Ammocrypta pellucidum**

Etheostoma camurum

*Etheostoma exile**

Etheostoma histrio

AMPHIBIA

AMBYSTOMATIDAE

Ambystoma

*jeffersonianum**

Ambystoma platineum

PLETHODONTIDAE

Desmognathus conanti

Hemidactylium

*scutatum**

CRYPTOBRANCHIDAE

Cryptobranchus

alleganiensis

HYLIDAE

*Hyla avivoca**

*Pseudacris streckeri**

MICROHYLIDAE

Gastrophryne

*carolinensis**

REPTILIA

CHELYDRIDAE

Macrochelys temminckii

EMYDIDAE

Clemmys guttata

*Emydoidea blandingii**

Pseudemys concinna

KINOSTERNIDAE

Kinosternon flavescens

COLUBRIDAE

*Clonophis kirtlandi**

Elaphe emoryi

*Heterodon nasicus**

Masticophis flagellum

*Nerodia cyclopion**

Nerodia fasciata

*Tantilla gracilis**

*Thamnophis sauritus**

Tropidoclonion

*lineatum**

VIPERIDAE

*Crotalus horridus**

Sistrurus catenatus

AVES

PHASIANIDAE

Tympanuchus cupido

ARDEIDAE

Botaurus lentiginosus

*Ixobrychus exilis**

Egretta thula

Egretta caerulea

Nycticorax nycticorax

Nyctanassa violacea

ACCIPITRIDAE

Ictinia mississippiensis

Haliaeetus

*leucocephalus**

Circus cyaneus

Buteo swainsoni

Pandion haliaetus

FALCONIDAE

*Falco peregrinus**

RALLIDAE

Rallus elegans

Laterallus jamaicensis

*Gallinula chloropus**

GRUIDAE

*Grus canadensis**

CHARADRIIDAE

Charadrius melodus

SCOLOPACIDAE

Bartramia longicauda

Phalaropus tricolor

LARIDAE

Sterna hirundo

Sterna forsteri

Sterna antillarum

Chlidonias niger

TYTONIDAE

Tyto alba

STRIGIDAE

Asio flammeus

LANIIDAE

*Lanius ludovicianus**

TROGLODYTIDAE

Thryomanes bewickii

PARULIDAE

*Dendroica cerulea**

Limnothlypis swainsonii

EMBERIZIDAE

*Ammodramus henslowii**

ICTERIDAE

Xanthocephalus

xanthocephalus

MAMMALIA

VESPERTILIONIDAE

Myotis sodalis

Myotis austroriparius

Myotis grisescens

Corynorhinus rafinesquii

CANIDAE

*Canis lupus**

SCIURIDAE

*Spermophilus franklinii**

MURIDAE

*Oryzomys palustris**

*Ochrotomys nuttalli**

Neotoma floridana

APPENDIX III - Cross Reference of Species to County -- County Listing

Counties with an asterisk (*) after them represent counties with recent (> 1994) records. Counties without an asterisk represent historic (< 1994) records.

Adams

Acipenser fulvescens
Ammodramus henslowii
Bartramia longicauda
Clonophis kirtlandi
Crotalus horridus
Cumberlandia monodonta
Cyclonaias tuberculata
Dendroica cerulea
*Ellipsaria lineolata**
Elliptio crassidens
Elliptio dilatata
Fusconaia ebena
*Haliaeetus leucocephalus**
Ictinia mississippiensis
Lampsilis higginsii
Lanius ludovicianus
Laterallus jamaicensis
Ligumia recta
Machrochelys temminckii
*Myotis grisescens**
*Myotis sodalis**
Pandion haliaetus
Plethobasus cyphus
Potamilus capax
Sistrurus catenatus
Spermophilus franklinii
Speyeria idalia
*Thryomanes bewickii**

Alexander

*Corynorhinus rafinesquii**
*Crotalus horridus**
Dendroica cerulea
Elliptio crassidens
Fusconaia ebena
*Haliaeetus leucocephalus**
*Hybognathus hayi**
*Hyla avivoca**
Ictinia mississippiensis
Lanius ludovicianus
*Lepomis symmetricus**
Ligumia recta

Limnothlypis swainsonii

*Myotis austroriparius**
Myotis grisescens
*Myotis sodalis**
Neotoma floridana
Nerodia cyclopion
Nerodia fasciata
*Notropis boops**
*Ochrotomys nuttalli**
*Orconectes lancifer**
*Oryzomys palustris**
Plethobasus cyphus
Pleurobema cordatum
Potamilus capax
*Pseudacris streckeri**
Pseudemys concinna
*Sterna antillarum**

Bond

Bartramia longicauda
Crotalus horridus
Elliptio dilatata
*Lanius ludovicianus**
*Myotis sodalis**
Nycticorax nycticorax

Boone

Alasmidonta viridis
*Ammodramus henslowii**
Buteo swainsoni
Elliptio dilatata
Etheostoma exile
Lanius ludovicianus
Notropis heterolepis
Pandion haliaetus

Brown

*Ammodramus henslowii**
*Botaurus lentiginosus**
Fusconaia ebena
*Thryomanes bewickii**

Bureau

Cyclonaias tuberculata
Ellipsaria lineolata
Elliptio dilatata
*Emydoidea blandingii**
Fusconaia ebena
*Haliaeetus leucocephalus**
Lampsilis higginsii
*Lanius ludovicianus**
*Notropis heterolepis**
*Notropis texanus**
Nyctanassa violacea
Nycticorax nycticorax
Thryomanes bewickii
Xanthocephalus
*xanthocephalus**

Calhoun

*Ammocrypta clarum**
*Ammodramus henslowii**
*Crotalus horridus**
Cumberlandia monodonta
Egretta caerulea
*Ellipsaria lineolata**
Elliptio crassidens
Elliptio dilatata
Fundulus dispar
Fusconaia ebena
*Haliaeetus leucocephalus**
*Ictinia mississippiensis**
Lampsilis higginsii
*Ligumia recta**
Machrochelys temminckii
Nycticorax nycticorax
Potamilus capax

Carroll

Acipenser fulvescens
Ammocrypta clarum
Bartramia longicauda
Botaurus lentiginosus
*Crotalus horridus**
Cyclonaias tuberculata

*Dendroica cerulea**
Ellipsaria lineolata
Elliptio crassidens
Elliptio dilatata
*Emydoidea blandingii**
Fusconaia ebena
*Grus canadensis**
*Haliaeetus leucocephalus**
*Hemidactylum scutatum**
*Heterodon nasicus**
Hybopsis amnis
Ixobrychus exilis
Lampsilis higginsii
Lanius ludovicianus
*Ligumia recta**
Plethobasus cyphus
Spermophilus franklinii
Speyeria idalia
*Stygobromus iowae**
Tropidoclonion lineatum
Tyto alba
Xanthocephalus
*xanthocephalus**

Cass

*Ammodramus henslowii**
Botaurus lentiginosus
Cyclonaias tuberculata
Ellipsaria lineolata
Elliptio dilatata
Emydoidea blandingii
Fusconaia ebena
*Gallinula chloropus**
*Haliaeetus leucocephalus**
*Hesperia ottoe**
*Heterodon nasicus**
Ixobrychus exilis
*Kinosternon flavescens**
Lampsilis higginsii
Lanius ludovicianus
Lepomis miniatus
Ligumia recta
Myotis sodalis
Plethobasus cyphus
*Pseudacris streckeri**
Rallus elegans
Spermophilus franklinii
*Speyeria idalia**
Xanthocephalus
xanthocephalus

Champaign

*Alasmidonta viridis**
Ammocrypta pellucidum
*Ammodramus henslowii**
*Bartramia longicauda**
Botaurus lentiginosus
Buteo swainsoni
*Circus cyaneus**
Clonophis kirtlandi
*Cyclonaias tuberculata**
Elliptio dilatata
Emydoidea blandingii
Grus canadensis
Hybopsis amblops
Hybopsis amnis
Ixobrychus exilis
*Lampsilis fasciola**
Lanius ludovicianus
Laterallus jamaicensis
Notropis heterolepis
Nyctanassa violacea
Nycticorax nycticorax
Quadrula cylindrica
Simpsonaias ambigua
Sistrurus catenatus
*Spermophilus franklinii**
Speyeria idalia
Thryomanes bewickii
Toxolasma lividus
Tropidoclonion lineatum
Tympanuchus cupido
Tyto alba
Villosa iris
*Villosa lienosa**

Christian

Bartramia longicauda
Clonophis kirtlandi
Elliptio dilatata
*Lanius ludovicianus**
Myotis sodalis
Spermophilus franklinii
*Tyto alba**

Clark

*Ambystoma jeffersonium**
*Crotalus horridus**
Cyclonaias tuberculata
Cyprogenia stegaria
Dendroica cerulea

Ellipsaria lineolata
Elliptio crassidens
Elliptio dilatata
Erimystax x-punctatus
Fusconaia ebena
Hybopsis amblops
Ligumia recta
Nocomis micropogon
Plethobasus cyphus
Pleurobema clava
Pleurobema cordatum
Ptychobranthus fasciolaris
Quadrula cylindrica

Clay

Elliptio dilatata
Hybopsis amblops
Hybopsis amnis
*Lanius ludovicianus**
*Tympanuchus cupido**
Villosa lienosa

Clinton

Clonophis kirtlandi
*Dendroica cerulea**
*Elliptio dilatata**
Erimystax x-punctatus
Lanius ludovicianus
Ligumia recta
*Myotis sodalis**
Plethobasus cyphus
*Sistrurus catenatus**
*Tyto alba**

Coles

*Ammocrypta pellucidum**
*Ammodramus henslowii**
*Bartramia longicauda**
Calephelis muticum
*Circus cyaneus**
*Clonophis kirtlandi**
Crotalus horridus
Dendroica cerulea
*Elliptio dilatata**
Emydoidea blandingii
Epioblasma triquetra
Erimystax x-punctatus
Etheostoma histrio
Hybopsis amblops
Ixobrychus exilis

Lanius ludovicianus
Notropis boops
Notropis heterolepis
*Ptychobranchnus fasciolaris**
Simpsonaias ambigua
Spermophilus franklinii
Speyeria idalia
Toxolasma lividus
*Tyto alba**
Villosa lienosa

Cook

Acipenser fulvescens
Aflexia rubranura
*Alasmidonta viridis**
Ambystoma platineum
*Ammodramus henslowii**
Asio flammeus
*Bartramia longicauda**
*Botaurus lentiginosus**
Calephelis muticum
*Catostomus catostomus**
Charadrius melodus
*Chlidonias niger**
Clemmys guttata
*Clonophis kirtlandi**
Coregonus artedi
Cyclonaias tuberculata
Dendroica cerulea
*Egretta caerulea**
Egretta thula
Elliptio crassidens
Elliptio dilatata
*Emydoidea blandingii**
*Etheostoma exile**
*Falco peregrinus**
*Fundulus diaphanus**
Fundulus dispar
*Gallinula chloropus**
*Grus canadensis**
Hemidactylium scutatum
Hybopsis amnis
Incisalia polios
*Ixobrychus exilis**
Lampsilis fasciola
Lanius ludovicianus
Laterallus jamaicensis
Ligumia recta
Myotis sodalis
Nannothemis bella

Notropis chalybaeus
Notropis heterodon
Notropis heterolepis
*Nyctanassa violacea**
*Nycticorax nycticorax**
*Pandion haliaetus**
*Papaipema eryngii**
Phalaropus tricolor
Rallus elegans
*Sistrurus catenatus**
*Somatochlora hineana**
Spermophilus franklinii
Speyeria idalia
Sterna antillarum
Sterna forsteri
Tyto alba
Villosa iris
Xanthocephalus
*xanthocephalus**

Crawford

*Ammocrypta pellucidum**
Cyclonaias tuberculata
Cyprogenia stegaria
Dendroica cerulea
Ellipsaria lineolata
Elliptio crassidens
Elliptio dilatata
Fusconaia ebena
*Haliaeetus leucocephalus**
Ixobrychus exilis
*Lanius ludovicianus**
Ligumia recta
Plethobasus cyphus
Pleurobema clava
Pleurobema cordatum
Ptychobranchnus fasciolaris
Quadrula cylindrica

Cumberland

*Ammocrypta pellucidum**
Crotalus horridus
Elliptio dilatata
Emydoidea blandingii
Epioblasma triquetra
Etheostoma histrio
Fusconaia ebena
Hybopsis amblops
Pleurobema clava
Ptychobranchnus fasciolaris

Sistrurus catenatus
*Thryomanes bewickii**
Villosa lienosa

DeKalb

*Alasmidonta viridis**
Bartramia longicauda
Botaurus lentiginosus
Cyclonaias tuberculata
Emydoidea blandingii
*Erimystax x-punctatus**
Etheostoma exile
*Lanius ludovicianus**
Ligumia recta
Notropis heterolepis
*Phalaropus tricolor**
Sistrurus catenatus
Tyto alba

DeWitt

Alasmidonta viridis
*Elliptio dilatata**
Lanius ludovicianus
Sistrurus catenatus
*Spermophilus franklinii**

Douglas

*Alasmidonta viridis**
*Clonophis kirtlandi**
*Elliptio dilatata**
*Epioblasma triquetra**
*Gallinula chloropus**
*Lanius ludovicianus**
Moxostoma carinatum
Nycticorax nycticorax
*Ptychobranchnus fasciolaris**
Spermophilus franklinii
Toxolasma lividus
*Villosa lienosa**

DuPage

Alasmidonta viridis
*Ammodramus henslowii**
*Bartramia longicauda**
Botaurus lentiginosus
*Chlidonias niger**
*Circus cyaneus**
Clonophis kirtlandi
Dendroica cerulea
Elliptio dilatata

*Emydoidea blandingii**
*Gallinula chloropus**
*Grus canadensis**
Ixobrychus exilis
Lanius ludovicianus
*Laterallus jamaicensis**
Moxostoma valenciennesi
Notropis heterolepis
*Nycticorax nycticorax**
Sistrurus catenatus
*Somatochlora hineana**
Spermophilus franklinii
Speyeria idalia
Xanthocephalus
*xanthocephalus**

Edgar

*Ambystoma jeffersonium**
Elliptio dilatata
*Hybopsis amblops**
Ligumia recta
Notropis boops
Ptychobranhus fasciolaris
Sistrurus catenatus
*Villosa lienosa**

Edwards

Elliptio dilatata
Haliaeetus leucocephalus
Lanius ludovicianus
Myotis sodalis
*Thamnophis sauritus**

Effingham

Ammocrypta pellucidum
*Ammodramus henslowii**
Bartramia longicauda
*Clonophis kirtlandi**
*Crotalus horridus**
Hybopsis amblops
*Lanius ludovicianus**
Notropis boops
*Tympanuchus cupido**
*Villosa lienosa**

Fayette

*Ammocrypta clarum**
*Calephelis muticum**
*Clonophis kirtlandi**
Dendroica cerulea

*Haliaeetus leucocephalus**
Hybopsis amnis
*Ixobrychus exilis**
*Lanius ludovicianus**
*Nyctanassa violacea**
Plethobasus cyphus
Sistrurus catenatus
*Tympanuchus cupido**
*Tyto alba**

Ford

*Alasmidonta viridis**
Ammocrypta pellucidum
*Ammodramus henslowii**
Bartramia longicauda
*Lampsilis fasciola**
Lanius ludovicianus
Myotis sodalis
Spermophilus franklinii
Tyto alba
Villosa lienosa

Franklin

Bartramia longicauda
*Circus cyaneus**
*Dendroica cerulea**
Elliptio dilatata
*Haliaeetus leucocephalus**
Hybopsis amnis
*Lanius ludovicianus**
Oryzomys palustris
Pseudemys concinna
*Rallus elegans**
*Tyto alba**

Fulton

Alasmidonta viridis
*Ammodramus henslowii**
*Bartramia longicauda**
*Botaurus lentiginosus**
Clonophis kirtlandi
Crotalus horridus
Cyclonaias tuberculata
Ellipsaria lineolata
Elliptio crassidens
Elliptio dilatata
Epioblasma triquetra
Erimystax x-punctatus
Fundulus dispar
Fusconaia ebena

*Haliaeetus leucocephalus**
Lampsilis higginsii
Ligumia recta
*Myotis sodalis**
Notropis heterolepis
Nycticorax nycticorax
Plethobasus cyphus
Potamilus capax
Rallus elegans
Spermophilus franklinii
Speyeria idalia

Gallatin

*Acipenser fulvescens**
Crotalus horridus
Cyprogenia stegaria
*Dendroica cerulea**
Ellipsaria lineolata
Elliptio crassidens
*Etheostoma histrio**
*Fusconaia ebena**
*Haliaeetus leucocephalus**
Lepomis miniatus
Neotoma floridana
Nyctanassa violacea
*Ochrotomys nuttalli**
*Orconectes indianensis**
Plethobasus cyphus
Pleurobema clava
Pleurobema cordatum
*Potamilus capax**
*Pseudemys concinna**
Ptychobranhus fasciolaris
Quadrula cylindrica
Sterna antillarum

Greene

Bartramia longicauda
Crotalus horridus
*Haliaeetus leucocephalus**
Hesperia metea
*Lanius ludovicianus**
*Spermophilus franklinii**

Grundy

*Aflexia rubranura**
Alasmidonta viridis
*Ammodramus henslowii**
Bartramia longicauda
*Botaurus lentiginosus**

*Circus cyaneus**
Cumberlandia monodonta
Cyclonaias tuberculata
Ellipsaria lineolata
Elliptio crassidens
Elliptio dilatata
*Emydoidea blandingii**
Epioblasma triquetra
*Gallinula chloropus**
*Grus canadensis**
Hybopsis amnis
*Ixobrychus exilis**
Lampsilis higginsii
Lanius ludovicianus
Ligumia recta
*Moxostoma carinatum**
*Moxostoma valenciennesi**
Notropis boops
*Papaipema eryngii**
Plethobasus cyphus
*Rallus elegans**
Spermophilus franklinii
Speyeria idalia

Hamilton

Cryptobranchus alleganiensis
Oryzomys palustris
*Tyto alba**

Hancock

*Acipenser fulvescens**
*Bartramia longicauda**
*Crotalus horridus**
*Cumberlandia monodonta**
Cyclonaias tuberculata
*Ellipsaria lineolata**
Elliptio crassidens
Elliptio dilatata
*Fusconaia ebena**
*Haliaeetus leucocephalus**
Lampsilis higginsii
Lanius ludovicianus
Lepomis miniatus
*Ligumia recta**
Plethobasus cyphus
Potamilus capax
Sistrurus catenatus
Spermophilus franklinii
Speyeria idalia

Hardin

Crangonyx packardii
Crotalus horridus
Cryptobranchus alleganiensis
Dendroica cerulea
Elliptio dilatata
Fusconaia ebena
Gastrophryne carolinensis
*Haliaeetus leucocephalus**
*Lampetra aepyptera**
*Myotis austroriparius**
*Myotis grisescens**
*Myotis sodalis**
Neotoma floridana
*Ochrotomys nuttalli**
*Orconectes indianensis**
*Orconectes kentuckiensis**
*Orconectes placidus**
*Potamilus capax**
Pseudemys concinna

Henderson

Acipenser fulvescens
Cumberlandia monodonta
Ellipsaria lineolata
Elliptio crassidens
Elliptio dilatata
Emydoidea blandingii
Fusconaia ebena
Haliaeetus leucocephalus
*Heterodon nasicus**
Hybopsis amnis
Kinosternon flavescens
Lampsilis higginsii
Ligumia recta
Myotis sodalis
Notropis texanus
Plethobasus cyphus
Potamilus capax
Speyeria idalia

Henry

*Bartramia longicauda**
Botaurus lentiginosus
Chlidonias niger
Elliptio dilatata
Emydoidea blandingii
Etheostoma exile
*Haliaeetus leucocephalus**
Heterodon nasicus

Ixobrychus exilis
*Kinosternon flavescens**
Lanius ludovicianus
Nycticorax nycticorax

Iroquois

Alasmidonta viridis
*Ammodramus henslowii**
Botaurus lentiginosus
*Circus cyaneus**
Elliptio dilatata
*Emydoidea blandingii**
*Fundulus dispar**
Hybopsis amnis
Lanius ludovicianus
Lepomis miniatus
*Ligumia recta**
Myotis sodalis
*Notropis chalybaeus**
Notropis heterolepis
*Notropis texanus**
Spermophilus franklinii
*Speyeria idalia**
Toxolasma lividus
Villosa lienosa

Jackson

*Ammocrypta clarum**
*Ammodramus henslowii**
*Corynorhinus rafinesquii**
*Crotalus horridus**
*Dendroica cerulea**
Elliptio dilatata
Falco peregrinus
Gastrophryne carolinensis
*Haliaeetus leucocephalus**
Hyla avivoca
*Ictinia mississippiensis**
Lanius ludovicianus
Limnothlypis swainsonii
*Macrhybopsis gelida**
Macrochelys temminckii
Myotis grisescens
*Myotis sodalis**
*Neotoma floridana**
Notropis boops
Nyctanassa violacea
Ochrotomys nuttalli
Oryzomys palustris
Pandion haliaetus

Pseudemys concinna
Sterna antillarum

Jasper

*Ammocrypta pellucidum**
*Ammodramus henslowii**
*Asio flammeus**
*Bartramia longicauda**
*Botaurus lentiginosus**
*Circus cyaneus**
Crotalus horridus
Cyrogenia stegaria
Elliptio dilatata
*Emydoidea blandingii**
Etheostoma histrio
Fusconaia ebena
*Haliaeetus leucocephalus**
*Ixobrychus exilis**
*Lanius ludovicianus**
Ligumia recta
*Nyctanassa violacea**
Plethobasus cyphus
Ptychobranhus fasciolaris
Quadrula cylindrica
*Rallus elegans**
*Tympanuchus cupido**
*Tyto alba**

Jefferson

Crotalus horridus
*Haliaeetus leucocephalus**
Hybognathus hayi
Hybopsis amnis
Lanius ludovicianus
Tyto alba

Jersey

Alasmidonta viridis
*Crotalus horridus**
*Dendroica cerulea**
Egretta caerulea
*Elaphe emoryi**
*Ellipsaria lineolata**
Falco peregrinus
Fundulus dispar
*Fusconaia ebena**
*Haliaeetus leucocephalus**
Hemidactylium scutatum
*Ictinia mississippiensis**
*Ligumia recta**

Macrochelys temminckii
*Myotis sodalis**
Notropis boops
Nyctanassa violacea
Potamilus capax
Pseudacris streckeri
Pseudemys concinna
Thryomanes bewickii

Jo Daviess

Acipenser fulvescens
*Alasmidonta viridis**
*Ammocrypta clarum**
*Ammodramus henslowii**
*Bartramia longicauda**
*Crotalus horridus**
Cyclonaias tuberculata
*Dendroica cerulea**
*Discus macclintocki**
*Ellipsaria lineolata**
Elliptio crassidens
Elliptio dilatata
Emydoidea blandingii
Fusconaia ebena
*Haliaeetus leucocephalus**
*Hemidactylium scutatum**
*Heterodon nasicus**
Hybopsis amnis
*Lampsilis higginsii**
*Lanius ludovicianus**
*Ligumia recta**
Myotis sodalis
Notropis heterolepis
Plethobasus cyphus
Stygobromus iowae
Xanthocephalus
xanthocephalus

Johnson

*Ammodramus henslowii**
*Circus cyaneus**
*Corynorhinus rafinesquii**
Crangonyx packardi
Crotalus horridus
*Dendroica cerulea**
*Desmognathus conanti**
*Haliaeetus leucocephalus**
*Hybognathus hayi**
*Hyla avivoca**
*Ictinia mississippiensis**

*Ixobrychus exilis**
*Lampetra aepyptera**
Lanius ludovicianus
Limnothlypis swainsonii
*Myotis austroriparius**
Myotis grisescens
*Myotis sodalis**
*Neotoma floridana**
Nyctanassa violacea
*Ochrotomys nuttalli**
*Orconectes indianensis**
*Oryzomys palustris**
Rallus elegans
*Thamnophis sauritus**
Thryomanes bewickii

Kane

*Alasmidonta viridis**
*Asio flammeus**
Bartramia longicauda
*Botaurus lentiginosus**
*Buteo swainsonii**
Cyclonaias tuberculata
*Elliptio dilatata**
*Emydoidea blandingii**
*Etheostoma exile**
*Gallinula chloropus**
*Grus canadensis**
*Ixobrychus exilis**
Lampsilis fasciola
Lanius ludovicianus
*Ligumia recta**
*Moxostoma carinatum**
*Moxostoma valenciennesi**
Notropis heterolepis
Nyctanassa violacea
*Nycticorax nycticorax**
*Phalaropus tricolor**
Plethobasus cyphus
Spermophilus franklinii
Speyeria idalia
Thryomanes bewickii
Villosa iris
Xanthocephalus
*xanthocephalus**

Kankakee

Alasmidonta viridis
Bartramia longicauda
*Crotalus horridus**

*Cyclonaias tuberculata**
Dendroica cerulea
*Elliptio dilatata**
*Emydoidea blandingii**
Epioblasma triquetra
*Fundulus dispar**
Fusconaia ebena
*Heterodon nasicus**
*Hybopsis amblops**
Ichthyomyzon fossor
*Ligumia recta**
*Moxostoma carinatum**
Moxostoma valenciennesi
*Notropis chalybaeus**
Notropis heterolepis
*Notropis texanus**
*Plethobasus cyphus**
Simpsonaias ambigua
Speyeria idalia
Villosa iris

Kendall

*Alasmidonta viridis**
Cyclonaias tuberculata
Elliptio dilatata
Etheostoma exile
Ixobrychus exilis
Lanius ludovicianus
Ligumia recta
*Moxostoma carinatum**
*Moxostoma valenciennesi**
Notropis heterolepis
*Pandion haliaetus**
Villosa iris

Knox

*Ammodramus henslowii**
Bartramia longicauda
Circus cyaneus
Elliptio dilatata
*Hemidactylum scutatum**
*Lanius ludovicianus**
Ligumia recta
Sistrurus catenatus
Spermophilus franklinii
Speyeria idalia

Lake

Acipenser fulvescens
*Aflexia rubranura**

*Ammodramus henslowii**
Asio flammeus
*Bartramia longicauda**
Botaurus lentiginosus
Catostomus catostomus
Charadrius melodus
*Chlidonias niger**
Clonophis kirtlandi
Coregonus artedi
Dendroica cerulea
Elliptio dilatata
*Emydoidea blandingii**
*Etheostoma exile**
*Falco peregrinus**
*Fundulus diaphanus**
*Fundulus dispar**
*Gallinula chloropus**
*Grus canadensis**
Hemidactylum scutatum
Hesperia ottoe
*Incisalia polios**
*Ixobrychus exilis**
Kinosternon flavescens

Lanius ludovicianus
*Lycaeides melissa samuelis**
*Notropis anogenus**
*Notropis heterodon**
*Notropis heterolepis**
*Nyctanassa violacea**
*Nycticorax nycticorax**
Paraphlepsius lupulus
Phalaropus tricolor
*Rallus elegans**
*Sistrurus catenatus**
Spermophilus franklinii
Speyeria idalia
Sterna antillarum
*Sterna forsteri**
*Sterna hirundo**
Xanthocephalus
*xanthocephalus**

LaSalle

Acipenser fulvescens
*Alasmidonta viridis**
*Ammodramus henslowii**
Bartramia longicauda
Circus cyaneus
*Crotalus horridus**
Cyclonaias tuberculata

Ellipsaria lineolata
Elliptio crassidens
*Elliptio dilatata**
*Emydoidea blandingii**
Epioblasma triquetra
Etheostoma exile
*Haliaeetus leucocephalus**
*Hemidactylum scutatum**
Lampsilis higginsii
Lanius ludovicianus
Ligumia recta
*Moxostoma carinatum**
Moxostoma valenciennesi
Myotis grisescens
*Myotis sodalis**
Notropis heterolepis
Nycticorax nycticorax
Plethobasus cyphus
Simpsonaias ambigua
Spermophilus franklinii
*Speyeria idalia**
Villosa iris

Lawrence

*Ammodramus henslowii**
Bartramia longicauda
*Botaurus lentiginosus**
Cryptobranchus alleganiensis
Cyclonaias tuberculata
Cyrogenia stegaria
Dendroica cerulea
Ellipsaria lineolata
Elliptio crassidens
Elliptio dilatata
Erimystax x-punctatus
Fundulus dispar
Fusconaia ebena
*Gallinula chloropus**
*Hemidactylum scutatum**
*Ixobrychus exilis**
*Lanius ludovicianus**
Myotis sodalis
Nocomis micropogon
*Nyctanassa violacea**
Plethobasus cyphus
Pleurobema clava
Pleurobema cordatum
Potamilus capax
Ptychobranchus fasciolaris
Quadrula cylindrica

*Rallus elegans**
*Thamnophis sauritus**

Lee

*Ammodramus henslowii**
Asio flammeus
*Bartramia longicauda**
Botaurus lentiginosus
Cyclonaias tuberculata
*Dendroica cerulea**
Elliptio dilatata
*Emydoidea blandingii**
*Erimystax x-punctatus**
Gallinula chloropus
Heterodon nasicus
*Ixobrychus exilis**
Kinosternon flavescens
Lanius ludovicianus
*Laterallus jamaicensis**
*Ligumia recta**
Nycticorax nycticorax
*Speyeria idalia**
Xanthocephalus
 *xanthocephalus**

Livingston

*Bartramia longicauda**
Elliptio dilatata
*Moxostoma carinatum**
*Moxostoma valenciennesi**
Notropis heterolepis
Spermophilus franklinii
Speyeria idalia
Villosa iris

Logan

Alasmidonta viridis
Ammocrypta clarum
*Ammodramus henslowii**
Elliptio dilatata
*Erimystax x-punctatus**
Lanius ludovicianus
Sistrurus catenatus
Speyeria idalia
Villosa iris

Macon

*Bartramia longicauda**
Clonophis kirtlandi
Dendroica cerulea

Erimystax x-punctatus
Nyctanassa violacea
Nycticorax nycticorax
Thryomanes bewickii
Tropidoclonion lineatum

Macoupin

Myotis sodalis
Spermophilus franklinii
Tropidoclonion lineatum

Madison

*Ammocrypta clarum**
Bartramia longicauda
Calephelis muticum
*Crotalus horridus**
Cyclonaias tuberculata
*Egretta caerulea**
*Egretta thula**
Elaphe emoryi
Ellipsaria lineolata
Elliptio dilatata
*Falco peregrinus**
Fusconaia ebena
*Gallinula chloropus**
Ligumia recta
Macrhybobis gelida
Myotis grisescens
*Myotis sodalis**
Notropis boops
*Nyctanassa violacea**
Nycticorax nycticorax
Potamilus capax
*Pseudacris streckeri**
Rallus elegans
*Scaphirhynchus albus**
Simpsonaias ambigua
*Sistrurus catenatus**
Sterna antillarum
Thryomanes bewickii
Tropidoclonion lineatum
Xanthocephalus
 xanthocephalus

Marion

*Ammodramus henslowii**
*Asio flammeus**
*Bartramia longicauda**
*Circus cyaneus**
*Haliaeetus leucocephalus**

*Lanius ludovicianus**
*Tympanuchus cupido**
*Tyto alba**
Villosa lienosa

Marshall

Canus lupus
Fusconaia ebena
*Haliaeetus leucocephalus**
Ixobrychus exilis
Lanius ludovicianus
Lepomis miniatus

Mason

Acipenser fulvescens
Atrytone arogos
Cyclonaias tuberculata
Ellipsaria lineolata
Elliptio dilatata
*Emydoidea blandingii**
*Fundulus dispar**
Fusconaia ebena
*Gallinula chloropus**
*Haliaeetus leucocephalus**
*Hemidactylium scutatum**
Hesperia metea
*Hesperia ottoe**
*Heterodon nasicus**
Ichthyomyzon fossor
Ixobrychus exilis
Kinosternon flavescens
Lampsilis higginsi
Lanius ludovicianus
*Laterallus jamaicensis**
*Lepomis miniatus**
Ligumia recta
Macrochelys temminckii
Moxostoma carinatum
*Myotis sodalis**
Notropis anogenus
*Notropis chalybaeus**
Notropis heterolepis
*Nycticorax nycticorax**
Plethobasus cyphus
Pseudacris streckeri
*Rallus elegans**
*Speyeria idalia**
*Thryomanes bewickii**
*Tyto alba**
Xanthocephalus

*xanthocephalus**

Massac

Acipenser fulvescens
Cryptobranchus alleganiensis
*Cumberlandia monodonta**
Cyclonaias tuberculata
Cyprogenia stegaria
Dendroica cerulea
*Ellipsaria lineolata**
*Elliptio crassidens**
Elliptio dilatata
Epioblasma triquetra
*Fusconaia ebena**
Gallinula chloropus
Haliaeetus leucocephalus
Ictinia mississippiensis
Ixobrychus exilis
Lampsilis abrupta
Lanius ludovicianus
Lepomis miniatus
*Ligumia recta**
Limnothlypis swainsonii
Macrochelys temminckii
*Myotis austroriparius**
Notropis maculatus
*Noturus stigmosis**
*Nyctanassa violacea**
*Orconectes placidus**
*Oryzomys palustris**
*Pandion haliaetus**
*Plethobasus cooperianus**
*Plethobasus cyphus**
Pleurobema clava
*Pleurobema cordatum**
*Potamilus capax**
*Pseudemys concinna**
*Ptychobranchus fasciolaris**
*Quadrula cylindrica**
*Sterna antillarum**
*Thamnophis sauritus**

McDonough

*Ammodramus henslowii**
Bartramia longicauda
*Caecidotea lesliei**
Clonophis kirtlandi
Crotalus horridus
Hemidactylium scutatum
Lanius ludovicianus

*Myotis sodalis**
Spermophilus franklinii
*Speyeria idalia**
*Tropidoclonion lineatum**

McHenry

*Aflexia rubranura**
*Alasmidonta viridis**
*Ammodramus henslowii**
*Bartramia longicauda**
*Botaurus lentiginosus**
*Buteo swainsoni**
*Charadrius melodus**
*Chlidonias niger**
*Circus cyaneus**
Cyclonaias tuberculata
*Elliptio dilatata**
*Emydoidea blandingii**
Epioblasma triquetra
Etheostoma exile
*Fundulus diaphanus**
*Gallinula chloropus**
*Grus canadensis**
*Ixobrychus exilis**
Ligumia recta
*Nannothemis bella**
*Notropis anogenus**
*Notropis heterodon**
*Notropis heterolepis**
*Nycticorax nycticorax**
*Rallus elegans**
Speyeria idalia
*Sterna forsteri**
Tyto alba
Villosa iris
Xanthocephalus
*xanthocephalus**

McLean

*Alasmidonta viridis**
*Ammodramus henslowii**
Asio flammeus
Bartramia longicauda
Clonophis kirtlandi
Emydoidea blandingii
Lanius ludovicianus
Nycticorax nycticorax
*Spermophilus franklinii**
Speyeria idalia

Menard

*Acipenser fulvescens**
Alasmidonta viridis
Cyclonaias tuberculata
Elliptio dilatata
Epioblasma triquetra
Hesperia ottoe
Lanius ludovicianus
Ligumia recta
Plethobasus cyphus
Pseudacris streckeri
Simpsonias ambigua
*Spermophilus franklinii**
*Speyeria idalia**
Tyto alba

Mercer

*Acipenser fulvescens**
Alasmidonta viridis
Ammocrypta clarum
Cumberlandia monodonta
Cyclonaias tuberculata
Ellipsaria lineolata
Elliptio crassidens
Elliptio dilatata
Fusconaia ebena
*Haliaeetus leucocephalus**
Heterodon nasicus
Lampsilis higginsii
*Lanius ludovicianus**
Ligumia recta
Nyctanassa violacea
Nycticorax nycticorax
Plethobasus cyphus
Potamilus capax
Simpsonias ambigua
Sistrurus catenatus
Speyeria idalia
Tropidoclonion lineatum

Monroe

*Crotalus horridus**
Egretta caerulea
Elaphe emoryi
Ellipsaria lineolata
Erimystax x-punctatus
Gallinula chloropus
*Gammarus acherondytes**
*Gastrophryne carolinensis**
Heterodon nasicus

*Ictinia mississippiensis**
Lanius ludovicianus
Masticophis flagellum
*Myotis grisescens**
*Myotis sodalis**
Nyctanassa violacea
Nycticorax nycticorax
*Pseudacris streckeri**
Tantilla gracilis

Montgomery

*Ammodramus henslowii**
Lanius ludovicianus

Morgan

Ammocrypta clarum
Bartramia longicauda
Cyclonaias tuberculata
Ellipsaria lineolata
Elliptio crassidens
Emydoidea blandingii
Fundulus dispar
*Fusconaia ebena**
*Haliaeetus leucocephalus**
*Hesperia ottoe**
Heterodon nasicus
Kinosternon flavescens
Lampsilis higginsii
*Lanius ludovicianus**
Lepomis miniatus
Ligumia recta
Myotis sodalis
*Phalaropus tricolor**
*Pseudacris streckeri**
*Speyeria idalia**
Thryomanes bewickii
Tropidoclonion lineatum

Moultrie

Epioblasma triquetra
Hybopsis amblops
*Lanius ludovicianus**
Notropis boops
Nyctanassa violacea
Nycticorax nycticorax
Pandion haliaetus

Ogle

*Ammodramus henslowii**
Bartramia longicauda

Cyclonaias tuberculata
*Dendroica cerulea**
Elliptio dilatata
Emydoidea blandingii
Epioblasma triquetra
*Erimystax x-punctatus**
Fusconaia ebena
*Haliaeetus leucocephalus**
*Hemidactylum scutatum**
Heterodon nasicus
Lanius ludovicianus
Ligumia recta
Moxostoma carinatum
Notropis heterolepis
Pandion haliaetus
Spermophilus franklinii
*Speyeria idalia**

Peoria

*Acipenser fulvescens**
*Ammodramus henslowii**
*Botaurus lentiginosus**
Cyclonaias tuberculata
Dendroica cerulea
Ellipsaria lineolata
Elliptio crassidens
Elliptio dilatata
Emydoidea blandingii
Fundulus dispar
Fusconaia ebena
Heterodon nasicus
Ixobrychus exilis
Lampsilis higginsii
Lanius ludovicianus
Laterallus jamaicensis
Ligumia recta
Macrochelys temminckii
Pandion haliaetus
Rallus elegans
Speyeria idalia

Perry

*Ammodramus henslowii**
*Circus cyaneus**
*Crotalus horridus**
Dendroica cerulea
Gallinula chloropus
*Haliaeetus leucocephalus**
Hybognathus hayi
*Ixobrychus exilis**

*Lanius ludovicianus**
Limnothlypis swainsonii
Myotis sodalis
*Oryzomys palustris**
*Rallus elegans**
*Tyto alba**

Piatt

Alasmidonta viridis
*Ammodramus henslowii**
*Clonophis kirtlandi**
Dendroica cerulea
Elliptio dilatata
*Lanius ludovicianus**
Nyctanassa violacea
*Sistrurus catenatus**
Spermophilus franklinii
Villosa iris

Pike

Ammocrypta clarum
Ammodramus henslowii
*Circus cyaneus**
Crangonyx packardi
*Crotalus horridus**
*Cumberlandia monodonta**
Cyclonaias tuberculata
Dendroica cerulea
Egretta thula
Ellipsaria lineolata
Elliptio crassidens
Elliptio dilatata
*Fusconaia ebena**
*Haliaeetus leucocephalus**
*Hesperia metea**
Ictinia mississippiensis
Lampsilis higginsii
*Lanius ludovicianus**
*Ligumia recta**
*Myotis grisescens**
Myotis sodalis
Nycticorax nycticorax
Plethobasus cyphus
Potamilus capax
Spermophilus franklinii
*Speyeria idalia**
Tyto alba

Pope

*Ammodramus henslowii**

*Circus cyaneus**
Crangonyx anomalus
*Crotalus horridus**
Dendroica cerulea
Ellipsaria lineolata
*Fusconaia ebena**
Gastrophryne carolinensis
*Haliaeetus leucocephalus**
*Hyla avivoca**
*Lampetra aepyptera**
Lanius ludovicianus
Limnothlypis swainsonii
*Myotis austroriparius**
Myotis grisescens
*Myotis sodalis**
Neotoma floridana
*Ochrotomys nuttalli**
*Orconectes indianensis**
*Orconectes placidus**
Oryzomys palustris
Potamilus capax
Pseudemys concinna
Ptychobranhus fasciolaris
Simpsonaias ambigua
*Sterna antillarum**
Thamnophis sauritus
Thryomanes bewickii
*Toxolasma lividus**
Villosa lienosa

Pulaski

Acipenser fulvescens
*Ammodramus henslowii**
*Corynorhinus rafinesquii**
Crotalus horridus
Cryptobranhus alleganiensis
*Cyclonaias tuberculata**
*Dendroica cerulea**
*Desmognathus conanti**
*Ellipsaria lineolata**
*Elliptio crassidens**
Elliptio dilatata
*Fusconaia ebena**
*Haliaeetus leucocephalus**
*Hybognathus hayi**
*Hyla avivoca**
*Ictinia mississippiensis**
*Ixobrychus exilis**
Lanius ludovicianus
Lepomis miniatus

*Lepomis symmetricus**
*Ligumia recta**
Limnothlypis swainsonii
Macrochelys temminckii
*Myotis austroriparius**
Myotis grisescens
*Myotis sodalis**
*Nyctanassa violacea**
Orconectes placidus
Oryzomys palustris
Plethobasus cooperianus
Plethobasus cyphus
*Pleurobema cordatum**
Quadrula cylindrica
Thamnophis sauritus
*Tyto alba**

Putnam

*Chlidonias niger**
*Haliaeetus leucocephalus**
Heterodon nasicus
Ixobrychus exilis
Lanius ludovicianus
Nyctanassa violacea
Nycticorax nycticorax
Spermophilus franklinii
Tropidoclonion lineatum
Xanthocephalus
*xanthocephalus**

Randolph

Ammocrypta clarum
*Asio flammeus**
Bartramia longicauda
*Circus cyaneus**
*Crotalus horridus**
Dendroica cerulea
Egretta caerulea
Elaphe emoryi
Falco peregrinus
Fusconaia ebena
Gallinula chloropus
Gastrophryne carolinensis
*Haliaeetus leucocephalus**
*Ictinia mississippiensis**
Ixobrychus exilis
Lanius ludovicianus
Macrochelys temminckii
Notropis boops
Pseudemys concinna

Scaphirhynchus albus
*Sterna antillarum**
Tantilla gracilis
*Tyto alba**

Richland

*Ammodramus henslowii**
Buteo swainsoni
Dendroica cerulea
*Lanius ludovicianus**
Nyctanassa violacea
Thamnophis sauritus
*Tyto alba**

Rock Island

Acipenser fulvescens
Alasmidonta viridis
Ammocrypta clarum
Crotalus horridus
*Cumberlandia monodonta**
Cyclonaias tuberculata
Dendroica cerulea
*Ellipsaria lineolata**
Elliptio crassidens
Elliptio dilatata
Emydoidea blandingii
Epioblasma triquetra
*Erimystax x-punctatus**
Etheostoma exile
Fusconaia ebena
*Haliaeetus leucocephalus**
*Hemidactylium scutatum**
Heterodon nasicus
Hybopsis amnis
Ixobrychus exilis
*Lampsilis higginsii**
Lanius ludovicianus
*Ligumia recta**
Macrochelys temminckii
Notropis heterolepis
*Nyctanassa violacea**
Nycticorax nycticorax
*Plethobasus cyphus**
Potamilus capax
Simpsonaias ambigua
Thryomanes bewickii
Xanthocephalus
*xanthocephalus**

St. Clair

Asio flammeus
*Botaurus lentiginosus**
Caecidotea spatulata
Crotalus horridus
*Dendroica cerulea**
*Egretta caerulea**
*Egretta thula**
Elaphe emoryi
*Fontigens antroecetes**
Fusconaia ebena
*Gallinula chloropus**
*Gammarus acherondytes**
*Haliaeetus leucocephalus**
*Ixobrychus exilis**
Lanius ludovicianus
Ligumia recta
*Myotis sodalis**
*Nyctanassa violacea**
*Nycticorax nycticorax**
Rallus elegans
Tantilla gracilis
Tropidoclonion lineatum

Saline

Ammodramus henslowii
Asio flammeus
Circus cyaneus
Crangonyx packardi
*Crotalus horridus**
Dendroica cerulea
*Haliaeetus leucocephalus**
Hybopsis amnis
Lanius ludovicianus
*Myotis sodalis**
*Ochrotomys nuttalli**
*Orconectes indianensis**
Oryzomys palustris
*Tyto alba**

Sangamon

Alasmidonta viridis
Bartramia longicauda
Clonophis kirtlandi
Dendroica cerulea
Elliptio dilatata
Epioblasma triquetra
*Falco peregrinus**
Ixobrychus exilis
*Lanius ludovicianus**

Ligumia recta
Myotis sodalis
Nycticorax nycticorax
Plethobasus cyphus
*Spermophilus franklinii**
*Thryomanes bewickii**
*Tropidoclonion lineatum**
Villosa iris

Schuyler

Clonophis kirtlandi
*Haliaeetus leucocephalus**
Lanius ludovicianus
Myotis sodalis

Scott

Ellipsaria lineolata
Elliptio dilatata
*Fusconaia ebena**
Hesperia metea
Hesperia ottoe
Myotis sodalis
Nycticorax nycticorax
*Pseudacris streckeri**
Speyeria idalia

Shelby

Alasmidonta viridis
*Ammocrypta clarum**
*Ammodramus henslowii**
Bartramia longicauda
*Clonophis kirtlandi**
Elliptio dilatata
Hybopsis amblops
Hybopsis amnis
Lanius ludovicianus
Notropis boops
Pandion haliaetus
Plethobasus cyphus
Sistrurus catenatus

Stark

Alasmidonta viridis
Elliptio dilatata
*Lanius ludovicianus**
Sistrurus catenatus
Spermophilus franklinii
Speyeria idalia

Stephenson

Elliptio dilatata
*Erimystax x-punctatus**
Etheostoma exile
*Fundulus dispar**
*Haliaeetus leucocephalus**
Ligumia recta
Notropis heterolepis

Tazewell

Dendroica cerulea
Elliptio dilatata
Fundulus dispar
*Haliaeetus leucocephalus**
Heterodon nasicus
Ixobrychus exilis
*Kinosternon flavescens**
Lanius ludovicianus
Lepomis miniatus
Lepomis symmetricus
Ligumia recta
Notropis chalybaeus
*Nycticorax nycticorax**
Pandion haliaetus
*Pseudacris streckeri**
Sistrurus catenatus
Villosa iris

Union

*Ammodramus henslowii**
Corynorhinus rafinesquii
Crangonyx packardi
*Crotalus horridus**
*Dendroica cerulea**
*Fundulus dispar**
*Gallinula chloropus**
Gastrophryne carolinensis
*Haliaeetus leucocephalus**
Hybognathus hayi
*Hyla avivoca**
*Ictinia mississippiensis**
*Ixobrychus exilis**
Lanius ludovicianus
Lepomis miniatus
*Lepomis symmetricus**
Limnothlypis swainsonii
Macrhybopsis gelida
Macrochelys temminckii
Myotis austroriparius
*Myotis sodalis**

*Neotoma floridana**
*Nerodia cyclopion**
*Notropis boops**
Notropis heterolepis
*Nyctanassa violacea**
*Ochrotomys nuttalli**
*Oryzomys palustris**
Pseudemys concinna
Scaphirhynchus albus
Sterna antillarum *
Tantilla gracilis
*Tyto alba**

Vermilion

*Alasmidonta viridis**
*Ambystoma platineum**
*Ammocrypta pellucidum**
*Ammodramus henslowii**
Asio flammeus
Bartramia longicauda
Calephelis muticum
Circus cyaneus
Clonophis kirtlandi
*Cyclonaias tuberculata**
Cyprogenia stegaria
Dendroica cerulea
Elliptio dilatata
*Emydoidea blandingii**
Epioblasma triquetra
*Erimystax x-punctatus**
*Etheostoma camurum**
Etheostoma exile
*Haliaeetus leucocephalus**
*Hemidactylium scutatum**
*Hybopsis amblops**
*Ixobrychus exilis**
*Lampsilis fasciola**
Lanius ludovicianus
Ligumia recta
*Moxostoma carinatum**
*Myotis sodalis**
*Nocomis micropogon**
*Notropis boops**
Notropis heterolepis
Noturus stigmosus
Nycticorax nycticorax
*Pleurobema clava**
*Ptychobranhus fasciolaris**
*Quadrula cylindrica**
Simpsonaias ambigua

Sistrurus catenatus
*Spermophilus franklinii**
*Toxolasma lividus**
*Tyto alba**
*Villosa iris**
*Villosa lienosa**

Wabash

*Chlidonias niger**
Corynorhinus rafinesquii
*Crotalus horridus**
Cumberlandia monodonta
Cyclonaias tuberculata
Cyprogenia stegaria
Dendroica cerulea
Ellipsaria lineolata
Elliptio crassidens
Elliptio dilatata
Epioblasma triquetra
*Etheostoma histrio**
Falco peregrinus
Fundulus dispar
Fusconaia ebena
Lampsilis abrupta
Lanius ludovicianus
Ligumia recta
Macrochelys temminckii
Myotis sodalis
Noturus stigmosus
Nyctanassa violacea
*Phalaropus tricolor**
Plethobasus cyphus
Pleurobema clava
Pleurobema cordatum
*Potamilus capax**
Pseudemys concinna
Ptychobranhus fasciolaris
Quadrula cylindrica
Simpsonaias ambigua
*Sterna antillarum**
Thamnophis sauritus

Warren

Notropis heterolepis
Sistrurus catenatus

Washington

*Ammodramus henslowii**
*Dendroica cerulea**
Ellipsaria lineolata

Elliptio dilatata
Hybognathus hayi
*Ixobrychus exilis**
*Lanius ludovicianus**
Ligumia recta
Plethobasus cyphus
Tympanuchus cupido

Wayne

Dendroica cerulea
Elliptio dilatata
Epioblasma triquetra
*Fusconaia ebena**
*Lanius ludovicianus**
Ptychobranhus fasciolaris
Tympanuchus cupido
Tyto alba

White

Cryptobranhus alleganiensis
Cumberlandia monodonta
Cyclonaias tuberculata
Cyprogenia stegaria
*Dendroica cerulea**
Ellipsaria lineolata
Elliptio crassidens
Elliptio dilatata
Epioblasma triquetra
*Etheostoma histrio**
Fundulus dispar
Fusconaia ebena
*Haliaeetus leucocephalus**
Lanius ludovicianus
*Lepomis miniatus**
Lepomis symmetricus
Ligumia recta
Macrochelys temminckii
Notropis heterolepis
Orconectes indianensis
Oryzomys palustris
Plethobasus cooperianus
Plethobasus cyphus
Pleurobema clava
Pleurobema cordatum
*Potamilus capax**
*Pseudemys concinna**
Ptychobranhus fasciolaris
Quadrula cylindrica
Simpsonaias ambigua
Toxolasma lividus

*Tympanuchus cupido**
Villosa lienosa

Whiteside

Acipenser fulvescens
Cyclonaias tuberculata
*Dendroica cerulea**
*Ellipsaria lineolata**
Elliptio crassidens
Elliptio dilatata
*Emydoidea blandingii**
*Erimystax x-punctatus**
Fusconaia ebena
*Grus canadensis**
*Haliaeetus leucocephalus**
Heterodon nasicus
Hybopsis amnis
*Ixobrychus exilis**
Kinosternon flavescens
Lampsilis higginsii
Lanius ludovicianus
*Ligumia recta**
Notropis heterolepis
Notropis texanus
Plethobasus cyphus
Tyto alba
Xanthocephalus
*xanthocephalus**

Will

*Aflexia rubranura**
Alasmidonta viridis
Ammocrypta clarum
*Ammodramus henslowii**
*Bartramia longicauda**
Botaurus lentiginosus
*Circus cyaneus**
*Clemmys guttata**
*Clonophis kirtlandi**
Cumberlandia monodonta
*Cyclonaias tuberculata**
Elliptio dilatata
*Emydoidea blandingii**
Epioblasma triquetra
*Etheostoma exile**
*Gallinula chloropus**
*Hemidactylium scutatum**
*Hybopsis amnis**
*Ixobrychus exilis**
Lampsilis higginsii

*Lanius ludovicianus**
*Ligumia recta**
Moxostoma carinatum
Moxostoma valenciennesi
Notropis heterolepis
*Nyctanassa violacea**
*Nycticorax nycticorax**
Pandion haliaetus
*Papaipema eryngii**
Plethobasus cyphus
*Rallus elegans**
Simpsonias ambigua
*Sistrurus catenatus**
*Somatochlora hineana**
*Spermophilus franklinii**
Speyeria idalia
Villosa iris
Xanthocephalus
*xanthocephalus**

Williamson

*Ammodramus henslowii**
*Bartramia longicauda**
Botaurus lentiginosus
Crotalus horridus
Dendroica cerulea
*Haliaeetus leucocephalus**
Hybopsis amnis
Ixobrychus exilis
*Lampetra aepyptera**
Nyctanassa violacea
Ochrotomys nuttalli
*Orconectes indianensis**
*Oryzomys palustris**
Pandion haliaetus
Thryomanes bewickii
*Tyto alba**

Winnebago

Alasmidonta viridis
Ammocrypta clarum
*Ammodramus henslowii**
Bartramia longicauda
Botaurus lentiginosus
Buteo swainsoni
Circus cyaneus
Cumberlandia monodonta
Cyclonaias tuberculata
Dendroica cerulea
Elliptio dilatata

Emydoidea blandingii
Epioblasma triquetra
*Erimystax x-punctatus**
*Etheostoma exile**
*Fundulus dispar**
*Grus canadensis**
*Haliaeetus leucocephalus**
Hesperia ottoe
Ixobrychus exilis
*Lanius ludovicianus**
*Ligumia recta**
Notropis texanus
Nycticorax nycticorax
Pandion haliaetus
Plethobasus cyphus
*Rallus elegans**
Speyeria idalia

Woodford

Alasmidonta viridis
Clonophis kirtlandi
*Elliptio dilatata**
*Haliaeetus leucocephalus**
*Ligumia recta**
Notropis heterolepis
Spermophilus franklinii

APPENDIX III - Cross Reference of Species to County -- Species Listing

Counties with an asterisk (*) after them represent counties with recent (> 1994) records. Counties without an asterisk represent historic (< 1994) records.

Acipenser fulvescens

Adams
Carroll
Cook
Gallatin*
Hancock*
Henderson
Jo Daviess
Lake
LaSalle
Mason
Massac
Menard*
Mercer*
Peoria*
Pulaski
Rock Island
Whiteside

Aflexia rubranura

Cook
Grundy*
Lake*
McHenry*
Will*

Alasmidonta viridis

Boone
Champaign*
Cook*
DeKalb*
DeWitt
Douglas*
DuPage
Ford*
Fulton
Grundy
Iroquois
Jersey
Jo Daviess*
Kane*
Kankakee
Kendall*

LaSalle*
Logan
McHenry*
McLean*
Menard
Mercer
Piatt
Rock Island
Sangamon
Shelby
Stark
Vermilion*
Will
Winnebago
Woodford

Ambystoma jeffersonianum

Clark*
Edgar*

Ambystoma platineum

Cook
Vermilion*

Ammocrypta clarum

Calhoun*
Carroll
Fayette*
Jackson*
Jo Daviess*
Logan
Madison*
Mercer
Morgan
Pike
Randolph
Rock Island
Shelby*
Will
Winnebago

Ammocrypta pellucidum

Champaign

Coles*
Crawford*
Cumberland*
Effingham
Ford
Jasper*
Vermilion*

Ammodramus henslowii

Adams
Boone*
Brown*
Calhoun*
Cass*
Champaign*
Coles*
Cook*
DuPage*
Effingham*
Ford*
Fulton*
Grundy*
Iroquois*
Jackson*
Jasper*
Jo Daviess*
Johnson*
Knox*
Lake*
LaSalle*
Lawrence*
Lee*
Logan*
Marion*
McDonough*
McHenry*
McLean*
Montgomery*
Ogle*
Peoria*
Perry*
Piatt*
Pike

Pope*
Pulaski*
Richland
Saline
Shelby*
Union*
Vermillion*
Washington*
Will*
Williamson*
Winnebago*

Asio flammeus

Cook
Jasper*
Kane*
Lake
Lee
Marion*
McLean
Randolph*
St. Clair
Saline
Vermillion

Atrytone arogos

Mason

Bartramia longicauda

Adams
Bond
Carroll
Champaign*
Christian
Coles*
Cook*
DeKalb
DuPage*
Effingham
Ford
Franklin
Fulton*
Greene
Grundy
Hancock*
Henry*
Jasper*
Jo Daviess*
Kane
Kankakee

Knox
Lake*
LaSalle
Lawrence
Lee*
Livingston*
Macon*
Madison
Marion*
McDonough
McHenry*
McLean
Morgan
Ogle
Randolph
Sangamon
Shelby
Vermillion
Will*
Williamson*
Winnebago

Botaurus lentiginosus

Brown*
Carroll
Cass
Champaign
Cook*
DeKalb
DuPage
Fulton*
Grundy*
Henry
Iroquois
Jasper*
Kane*
Lake
Lawrence*
Lee
McHenry*
Peoria*
St. Clair*
Will
Williamson
Winnebago

Buteo swainsoni

Boone
Champaign
Kane*

McHenry*
Richland
Winnebago

Caecidotea lesliei

McDonough*

Caecidotea spatulata

St. Clair

Calephelis muticum

Coles
Cook
Fayette*
Madison
Vermillion

Canus lupus

Marshall

Catostomus catostomus

Cook*
Lake

Charadrius melodus

Cook
Lake

Chlidonias niger

Cook*
DuPage*
Henry
Lake*
McHenry*
Putnam*
Wabash*

Circus cyaneus

Champaign*
Coles*
DuPage*
Franklin*
Grundy*
Iroquois*
Jasper*
Johnson*
Knox
LaSalle
Marion*
McHenry*

Perry*
Pike*
Pope*
Randolph*
Saline
Vermilion
Will*
Winnebago

Clemmys guttata

Cook
Will*

Clonophis kirtlandi

Adams
Champaign
Christian
Clinton
Coles*
Cook*
Douglas*
DuPage
Effingham*
Fayette*
Fulton
Lake
Macon
McDonough
McLean
Piatt*
Sangamon
Schuyler
Shelby*
Vermilion
Will*
Woodford

Coregonus artedii

Cook
Lake

Corynorhinus rafinesquii

Alexander*
Jackson*
Johnson*
Pulaski*
Union
Wabash

Crangonyx anomalus

Pope

Crangonyx packardii

Hardin
Johnson*
Pike
Saline
Union

Crotalus horridus

Adams
Alexander*
Bond
Calhoun*
Carroll*
Clark*
Coles
Cumberland
Effingham*
Fulton
Gallatin
Greene
Hancock*
Hardin
Jackson*
Jasper
Jefferson
Jersey*
Jo Daviess*
Johnson
Kankakee*
LaSalle*
Madison*
McDonough
Monroe*
Perry*
Pike*
Pope*
Pulaski
Randolph*
Rock Island
St. Clair
Saline*
Union*
Wabash*
Williamson

Cryptobranchus

alleganiensis

Hamilton
Hardin
Lawrence
Massac
Pulaski
White

Cumberlandia monodonta

Adams
Calhoun
Grundy
Hancock*
Henderson
Massac*
Mercer
Pike*
Rock Island*
Wabash
White
Will
Winnebago

Cyclonaias tuberculata

Adams
Bureau
Carroll
Cass
Champaign*
Clark
Cook
Crawford
DeKalb
Fulton
Grundy
Hancock
Jo Daviess
Kane
Kankakee*
Kendall
LaSalle
Lawrence
Lee
Madison
Mason
Massac
McHenry
Menard
Mercer

Morgan
Ogle
Peoria
Pike
Pulaski*
Rock Island
Vermilion*
Wabash
White
Whiteside
Will*
Winnebago

Cyprogenia stegaria

Clark
Crawford
Gallatin
Jasper
Lawrence
Massac
Vermilion
Wabash
White

Dendroica cerulea

Adams
Alexander
Carroll*
Clark
Clinton*
Coles
Cook
Crawford
DuPage
Fayette
Franklin*
Gallatin*
Hardin
Jackson*
Jersey*
Jo Daviess*
Johnson*
Kankakee
Lake
Lawrence
Lee*
Macon
Massac
Ogle*
Peoria

Perry
Piatt
Pike
Pope
Pulaski*
Randolph
Richland
Rock Island
St. Clair*
Saline
Sangamon
Tazewell
Union*
Vermilion
Wabash
Washington*
Wayne
White*
Whiteside*
Williamson
Winnebago

Desmognathus conanti

Johnson*
Pulaski*

Discus macclintocki

Jo Daviess*

Egretta caerulea

Calhoun
Cook*
Jersey
Madison*
Monroe
Randolph
St. Clair*

Egretta thula

Cook
Madison*
Pike
St. Clair*

Elaphe emoryi

Jersey*
Madison
Monroe
Randolph
St. Clair

Ellipsaria lineolata

Adams*
Bureau
Calhoun*
Carroll
Cass
Clark
Crawford
Fulton
Gallatin
Grundy
Hancock*
Henderson
Jersey*
Jo Daviess*
LaSalle
Lawrence
Madison
Mason
Massac*
Mercer
Monroe
Morgan
Peoria
Pike*
Pope
Pulaski*
Rock Island*
Scott
Wabash
Washington
White
Whiteside*

Elliptio crassidens

Adams
Alexander
Calhoun
Carroll
Clark
Cook
Crawford
Fulton
Gallatin
Grundy
Hancock
Henderson
Jo Daviess
LaSalle
Lawrence

Massac*
Mercer
Morgan
Peoria
Pike
Pulaski*
Rock Island
Wabash
White
Whiteside

Elliptio dilatata

Adams
Bond
Boone
Bureau
Calhoun
Carroll
Cass
Champaign
Christian
Clark
Clay
Clinton*
Coles*
Cook
Crawford
Cumberland
DeWitt*
Douglas*
DuPage
Edgar
Edwards
Franklin
Fulton
Grundy
Hancock
Hardin
Henderson
Henry
Iroquois
Jackson
Jasper
Jo Daviess
Kane*
Kankakee*
Kendall
Knox
Lake
LaSalle*

Lawrence
Lee
Livingston
Logan
Madison
Mason
Massac
McHenry*
Menard
Mercer
Ogle
Peoria
Piatt
Pike
Pulaski
Rock Island
Sangamon
Scott
Shelby
Stark
Stephenson
Tazewell
Vermilion
Wabash
Washington
Wayne
White
Whiteside
Will
Winnebago
Woodford*

Emydoidea blandingii

Bureau*
Carroll*
Cass
Champaign
Coles
Cook*
Cumberland
DeKalb
DuPage*
Grundy*
Henderson
Henry
Iroquois*
Jasper*
Jo Daviess
Kane*
Kankakee*

Lake*
LaSalle*
Lee*
Mason*
McHenry*
McLean
Morgan
Ogle
Peoria
Rock Island
Vermilion*
Whiteside*
Will*
Winnebago

Epioblasma triquetra

Coles
Cumberland
Douglas*
Fulton
Grundy
Kankakee
LaSalle
Massac
McHenry
Menard
Moultrie
Ogle
Rock Island
Sangamon
Vermilion
Wabash
Wayne
White
Will
Winnebago

Erimystax x-punctatus

Clark
Clinton
Coles
DeKalb*
Fulton
Lawrence
Lee*
Logan
Macon
Monroe
Ogle*
Rock Island*

Stephenson*
Vermilion*
Whiteside*
Winnebago*

Etheostoma camurum

Vermilion*

Etheostoma exile

Boone
Cook*
DeKalb
Henry
Kane*
Kendall
Lake*
LaSalle
McHenry*
Rock Island
Stephenson
Vermilion
Will*
Winnebago*

Etheostoma histrio

Coles
Cumberland
Gallatin*
Jasper
Wabash*
White*

Falco peregrinus

Cook*
Jackson
Jersey
Lake*
Madison*
Randolph
Sangamon*
Wabash

Fontigens antroecetes

St. Clair*

Fundulus diaphanus

Cook*
Lake*
McHenry*

Fundulus dispar

Calhoun
Cook
Fulton
Iroquois*
Jersey
Kankakee*
Lake*
Lawrence
Mason*
Morgan
Peoria
Stephenson*
Tazewell
Union*
Wabash
White
Winnebago*

Fusconaia ebena

Adams
Alexander
Brown
Bureau
Calhoun
Carroll
Cass
Clark
Crawford
Cumberland
Fulton
Gallatin*
Hancock*
Hardin
Henderson
Jasper
Jersey*
Jo Daviess
Kankakee
Lawrence
Madison
Marshall
Mason
Massac*
Mercer
Morgan*
Ogle
Peoria
Pike*
Pope*

Pulaski*
Randolph
Rock Island
St. Clair
Scott*
Wabash
Wayne*
White
Whiteside

Gallinula chloropus

Cass*
Cook*
Douglas*
DuPage*
Grundy*
Kane*
Lake*
Lawrence*
Lee
Madison*
Mason*
Massac
McHenry*
Monroe
Perry
Randolph
St. Clair*
Union*
Will*

Gammarus acherondytes

Monroe*
St. Clair*

Gastrophryne carolinensis

Hardin
Jackson
Monroe*
Pope
Randolph
Union

Grus canadensis

Carroll*
Champaign
Cook*
DuPage*
Grundy*
Kane*

Lake*
McHenry*
Whiteside*
Winnebago*

Haliaeetus leucocephalus

Adams*
Alexander*
Bureau*
Calhoun*
Carroll*
Cass*
Crawford*
Edwards
Fayette*
Franklin*
Fulton*
Gallatin*
Greene*
Hancock*
Hardin*
Henderson
Henry*
Jackson*
Jasper*
Jefferson*
Jersey*
Jo Daviess*
Johnson*
LaSalle*
Marion*
Marshall*
Mason*
Massac
Mercer*
Morgan*
Ogle*
Perry*
Pike*
Pope*
Pulaski*
Putnam*
Randolph*
Rock Island*
St. Clair*
Saline*
Schuyler*
Stephenson*
Tazewell*
Union*

Vermilion*
White*
Whiteside*
Williamson*
Winnebago*
Woodford*

Hemidactyrium scutatum

Carroll*
Cook
Jersey
Jo Daviess*
Knox*
Lake
LaSalle*
Lawrence*
McDonough
Ogle*
Rock Island*
Vermilion*
Will*

Hesperia metea

Greene
Mason
Pike*
Scott

Hesperia ottoe

Cass*
Lake
Mason*
Menard
Morgan*
Scott
Winnebago

Heterodon nasicus

Carroll*
Cass*
Henderson*
Henry
Jo Daviess*
Kankakee*
Lee
Mason*
Mercer
Monroe
Morgan
Ogle

Peoria
Putnam
Rock Island
Tazewell
Whiteside

Hybognathus hayi

Alexander*
Jefferson
Johnson*
Perry
Pulaski*
Union
Washington

Hybopsis amblops

Champaign
Clark
Clay
Coles
Cumberland
Edgar*
Effingham
Kankakee*
Moultrie
Shelby
Vermilion*

Hybopsis amnis

Carroll
Champaign
Clay
Cook
Fayette
Franklin
Grundy
Henderson
Iroquois
Jefferson
Jo Daviess
Rock Island
Saline
Shelby
Whiteside
Will*
Williamson

Hyla avivoca

Alexander*
Jackson

Johnson*
Pope*
Pulaski*
Union*

Ichthyomyzon fossor

Kankakee

Ictinia mississippiensis

Adams
Alexander
Calhoun*
Jackson*
Jersey*
Johnson*
Massac
Monroe*
Pike
Pulaski*
Randolph*
Union*

Incisalia polios

Cook
Lake*

Ixobrychus exilis

Carroll
Cass
Champaign
Coles
Cook*
Crawford
DuPage
Fayette*
Grundy*
Henry
Jasper*
Johnson*
Kane*
Kendall
Lake*
Lawrence*
Lee*
Madison*
Marshall
Mason
Massac
McHenry*
Peoria

Perry*
Pulaski*
Putnam
Randolph
Rock Island
St. Clair*
Sangamon
Tazewell
Union*
Vermilion*
Washington*
Whiteside*
Will*
Williamson
Winnebago

Kinosternon flavescens

Cass*
Henderson
Henry*
Lake
Lee
Mason
Morgan
Tazewell*
Whiteside

Lampetra aepyptera

Hardin*
Johnson*
Pope*
Williamson*

Lampsilis abrupta

Massac
Wabash

Lampsilis fasciola

Champaign*
Cook
Ford*
Kane
Vermilion*

Lampsilis higginsii

Adams
Bureau
Calhoun
Carroll
Cass

Fulton
Grundy
Hancock
Henderson
Jo Daviess*
LaSalle
Mason
Mercer
Morgan
Peoria
Pike
Rock Island*
Whiteside
Will

Lanius ludovicianus

Adams
Alexander
Bond*
Boone
Bureau*
Carroll
Cass
Champaign
Christian*
Clay*
Clinton
Coles
Cook
Crawford*
DeKalb*
DeWitt
Douglas*
DuPage
Edwards
Effingham*
Fayette*
Ford
Franklin*
Greene*
Grundy
Hancock
Henry
Iroquois
Jackson
Jasper*
Jefferson
Jo Daviess*
Johnson
Kane

Kendall
Knox*
Lake
LaSalle
Lawrence*
Lee
Logan
Marion*
Marshall
Mason
Massac
McDonough
McLean
Menard
Mercer*
Monroe
Montgomery
Morgan*
Moultrie*
Ogle
Peoria
Perry*
Piatt*
Pike*
Pope
Pulaski
Putnam
Randolph
Richland*
Rock Island
St. Clair
Saline
Sangamon*
Schuyler
Shelby
Stark*
Tazewell
Union
Vermilion
Wabash
Washington*
Wayne*
White
Whiteside
Will*
Winnebago*

Laterallus jamaicensis

Adams
Champaign

Cook
DuPage*
Lee*
Mason*
Peoria

Lepomis miniatus

Cass
Gallatin*
Hancock
Iroquois
Marshall
Mason*
Massac
Morgan
Pulaski
Tazewell
Union
White*

Lepomis symmetricus

Alexander*
Pulaski*
Tazewell
Union*
White

Ligumia recta

Adams
Alexander
Calhoun*
Carroll*
Cass
Clark
Clinton
Cook
Crawford
DeKalb
Edgar
Fulton
Grundy
Hancock*
Henderson
Iroquois*
Jasper
Jersey*
Jo Daviess*
Kane*
Kankakee*
Kendall

Knox
LaSalle
Lee*
Madison
Mason
Massac*
McHenry
Menard
Mercer
Morgan
Ogle
Peoria
Pike*
Pulaski*
Rock Island*
St. Clair
Sangamon
Stephenson
Tazewell
Vermilion
Wabash
Washington
White
Whiteside*
Will*
Winnebago*
Woodford

Limnothlypis swainsonii

Alexander
Jackson
Johnson
Massac
Perry
Pope
Pulaski
Union

Lycaeides melissa samuelis
Lake*

Macrhybopsis gelida

Jackson*
Madison
Union

Machrochelys temminckii

Adams
Calhoun
Jackson

Jersey
Mason
Massac
Peoria
Pulaski
Randolph
Rock Island
Union
Wabash
White

Masticophis flagellum

Monroe

Moxostoma carinatum

Douglas
Grundy*
Kane*
Kankakee*
Kendall*
LaSalle*
Livingston*
Mason
Ogle
Vermilion*
Will

Moxostoma valenciennesi

DuPage
Grundy*
Kane*
Kankakee
Kendall*
LaSalle
Livingston*
Will

Myotis austroriparius

Alexander*
Hardin*
Johnson*
Massac*
Pope*
Pulaski*
Union

Myotis grisescens

Adams*
Alexander
Hardin*

Jackson
Johnson
LaSalle
Madison
Monroe*
Pike*
Pope
Pulaski

Myotis sodalis

Adams*
Alexander*
Bond*
Cass
Christian
Clinton*
Cook
Edwards
Ford
Fulton*
Hardin*
Henderson
Iroquois
Jackson*
Jersey*
Jo Daviess
Johnson*
LaSalle*
Lawrence
Macoupin
Madison
Mason*
McDonough*
Monroe*
Morgan
Perry
Pike
Pope*
Pulaski*
St. Clair*
Saline*
Sangamon
Schuyler
Scott
Union*
Vermilion*
Wabash

Nannothemis bella

Cook

McHenry*

Neotoma floridana

Alexander
Gallatin
Hardin
Jackson*
Johnson
Pope
Union*

Nerodia cyclopion

Alexander
Union*

Nerodia fasciata

Alexander

Nocomis micropogon

Clark
Lawrence
Vermilion*

Notropis anogenus

Lake*
Mason
McHenry*

Notropis boops

Alexander*
Coles
Edgar
Effingham
Grundy
Jackson
Jersey
Madison
Moultrie
Randolph
Shelby
Union*
Vermilion*

Notropis chalybaeus

Cook
Iroquois*
Kankakee*
Mason*
Tazewell

Notropis heterodon

Cook
Lake*
McHenry*

Notropis heterolepis

Boone
Bureau*
Champaign
Coles
Cook
DeKalb
DuPage
Fulton
Iroquois
Jo Daviess
Kane
Kankakee
Kendall
Lake*
LaSalle
Livingston
Mason
McHenry*
Ogle
Rock Island
Stephenson
Union
Vermilion
Warren
White
Whiteside
Will
Woodford

Notropis maculatus

Massac

Notropis texanus

Bureau*
Henderson
Iroquois*
Kankakee*
Whiteside
Winnebago

Noturus stigmosus

Massac*
Vermilion
Wabash

Nyctanassa violacea

Bureau
Champaign
Cook*
Fayette*
Gallatin
Jackson
Jasper*
Jersey
Johnson
Kane
Lake*
Lawrence*
Macon
Madison*
Massac*
Mercer
Monroe
Moultrie
Piatt
Pulaski*
Putnam
Richland
Rock Island*
St. Clair*
Union*
Wabash
Will*
Williamson

Nycticorax nycticorax

Bond
Bureau
Calhoun
Champaign
Cook*
Douglas
DuPage*
Fulton
Henry
Kane*
Lake*
LaSalle
Lee
Macon
Madison
Mason*
McHenry*
McLean
Mercer

Monroe
Moultrie
Pike
Putnam
Rock Island
St. Clair*
Sangamon
Scott
Tazewell*
Vermilion
Will*
Winnebago

Ochrotomys nuttalli

Alexander*
Gallatin*
Hardin*
Jackson
Johnson*
Pope*
Saline*
Union*
Williamson

Orconectes indianensis

Gallatin*
Hardin*
Johnson*
Pope*
Saline*
White
Williamson*

Orconectes kentuckiensis

Hardin*

Orconectes lancifer

Alexander*

Orconectes placidus

Hardin*
Massac*
Pope*
Pulaski

Oryzomys palustris

Alexander*
Franklin
Hamilton
Jackson

Johnson*
Massac*
Perry*
Pope
Pulaski
Saline
Union*
White
Williamson*

Pandion haliaetus

Adams
Boone
Cook*
Jackson
Kendall*
Massac*
Moultrie
Ogle
Peoria
Shelby
Tazewell
Will
Williamson
Winnebago

Papaipema eryngii

Cook*
Grundy*
Will*

Paraphlepsius lupalus

Lake

Phalaropus tricolor

Cook
DeKalb*
Kane*
Lake
Morgan*
Wabash*

Plethobasus cooperianus

Massac*
Pulaski
White

Plethobasus cyphus

Adams
Alexander

Carroll
Cass
Clark
Clinton
Crawford
Fayette
Fulton
Gallatin
Grundy
Hancock
Henderson
Jasper
Jo Daviess
Kane
Kankakee*
LaSalle
Lawrence
Mason
Massac*
Menard
Mercer
Pike
Pulaski
Rock Island*
Sangamon
Shelby
Wabash
Washington
White
Whiteside
Will
Winnebago

Pleurobema clava

Clark
Crawford
Cumberland
Gallatin
Lawrence
Massac
Vermilion*
Wabash
White

Pleurobema cordatum

Alexander
Clark
Crawford
Gallatin
Lawrence

Massac*
Pulaski*
Wabash
White

Potamilus capax

Adams
Alexander
Calhoun
Fulton
Gallatin*
Hancock
Hardin*
Henderson
Jersey
Lawrence
Madison
Massac*
Mercer
Pike
Pope
Rock Island
Wabash*
White*

Pseudacris streckeri

Alexander*
Cass*
Madison*
Mason
Menard
Monroe*
Morgan*
Scott*
Tazewell*

Pseudemys concinna

Alexander
Franklin
Gallatin*
Hardin
Jackson
Jersey
Massac*
Pope
Randolph
Union
Wabash
White*

Ptychobranchnus fasciolaris

Clark
 Coles*
 Crawford
 Cumberland
 Douglas*
 Edgar
 Gallatin
 Jasper
 Lawrence
 Pope
 Vermilion*
 Wabash
 Wayne
 White

Quadrula cylindrica

Champaign
 Clark
 Crawford
 Gallatin
 Jasper
 Lawrence
 Massac*
 Pulaski
 Vermilion*
 Wabash
 White

Rallus elegans

Cass
 Cook
 Franklin*
 Fulton
 Grundy*
 Jasper*
 Johnson
 Lake*
 Lawrence*
 Madison
 Mason*
 McHenry*
 Peoria
 Perry*
 St. Clair
 Will*
 Winnebago*

Scaphirhynchus albus

Madison*

Randolph
 Union

Simpsonaias ambigua

Champaign
 Coles
 Kankakee
 LaSalle
 Madison
 Menard
 Mercer
 Pope
 Rock Island
 Vermilion
 Wabash
 White
 Will

Sistrurus catenatus

Adams
 Champaign
 Clinton*
 Cook*
 Cumberland
 DeKalb
 DeWitt
 DuPage
 Edgar
 Fayette
 Hancock
 Knox
 Lake*
 Logan
 Madison*
 Mercer
 Piatt*
 Shelby
 Stark
 Tazewell
 Vermilion
 Warren
 Will*

Somatochlora hineana

Cook*
 DuPage*
 Will*

Spermophilus franklinii

Adams

Carroll
 Cass
 Champaign*
 Christian
 Coles
 Cook
 DeWitt*
 Douglas
 DuPage
 Ford
 Fulton
 Greene*
 Grundy
 Hancock
 Iroquois
 Kane
 Knox
 Lake
 LaSalle
 Livingston
 Macoupin
 McDonough
 McLean*
 Menard*
 Ogle
 Piatt
 Pike
 Putnam
 Sangamon*
 Stark
 Vermilion*
 Will*
 Woodford

Speyeria idalia

Adams
 Carroll
 Cass*
 Champaign
 Coles
 Cook
 DuPage
 Fulton
 Grundy
 Hancock
 Henderson
 Iroquois*
 Kane
 Kankakee
 Knox

Lake
LaSalle*
Lee*
Livingston
Logan
Mason*
McDonough*
McHenry
McLean
Menard*
Mercer
Morgan*
Ogle*
Peoria
Pike*
Scott
Stark
Will
Winnebago

Sterna antillarum

Alexander*
Cook
Gallatin
Jackson
Lake
Madison
Massac*
Pope*
Randolph*
Union*
Wabash*

Sterna forsteri

Cook
Lake*
McHenry*

Sterna hirundo

Lake*

Stygobromus iowae

Carroll*
Jo Daviess

Tantilla gracilis

Monroe
Randolph
St. Clair
Union

Thamnophis sauritus

Edwards*
Johnson*
Lawrence*
Massac*
Pope
Pulaski
Richland
Wabash

Thryomanes bewickii

Adams*
Brown*
Bureau
Champaign
Cumberland*
Jersey
Johnson
Kane
Macon
Madison
Mason*
Morgan
Pope
Rock Island
Sangamon*
Williamson

Toxolasma lividus

Champaign
Coles
Douglas
Iroquois
Pope*
Vermilion*
White

Tropidoclonion lineatum

Carroll
Champaign
Macon
Macoupin
Madison
McDonough*
Mercer
Morgan
Putnam
St. Clair
Sangamon*

Tympanuchus cupido

Champaign
Clay*
Effingham*
Fayette*
Jasper*
Marion*
Washington
Wayne
White*

Tyto alba

Carroll
Champaign
Christian*
Clinton*
Coles*
Cook
DeKalb
Fayette*
Ford
Franklin*
Hamilton*
Jasper*
Jefferson
Marion*
Mason*
McHenry
Menard
Perry*
Pike
Pulaski*
Randolph*
Richland*
Saline*
Union*
Vermilion*
Wayne
Whiteside
Williamson*

Villosa iris
Champaign
Cook
Kane
Kankakee
Kendall
LaSalle
Livingston
Logan

McHenry
Piatt
Sangamon
Tazewell
Vermilion*
Will

Villosa lienosa

Champaign*
Clay
Coles
Cumberland
Douglas*
Edgar*
Effingham
Ford
Iroquois
Marion
Pope
Vermilion*
White

Xanthocephalus
xanthocephalus

Bureau*
Carroll*
Cass
Cook*
DuPage*
Jo Daviess
Kane*
Lake*
Lee*
Madison
Mason*
McHenry*
Putnam*
Rock Island*
Whiteside*
Will*

Helpful Contacts Regarding Endangered and Threatened Species In Illinois

Illinois Department of Natural Resources

Division of Natural Heritage: identification, protection, management, and recovery of nongame and endangered species, natural areas, nature preserves 217/785-8774.

Endangered and Threatened Species Conservation Program: management and recovery of endangered species 217/785-8774.

Division of Resource Review and Coordination: endangered species consultation (impact assessments) 217/785-5500.

Natural Heritage Database: computerized database of natural areas, endangered species, and other significant features in Illinois 217/785-8774.

Natural Areas Program: identification, acquisition, or management of natural areas 217/785-8774.

Illinois Endangered Species Protection Board

Status and distribution of endangered and threatened species, listing of species as endangered or threatened 217/785-8687.

Illinois Nature Preserves Commission

Protection and Dedication of State Nature Preserves 217/785-8686.

Equal opportunity to participate in programs of the Illinois Department of Natural Resources (IDNR), Illinois Endangered Species Protection Board, and those funded by the U.S. Fish and Wildlife Service and other agencies is available to all individuals regardless of race, sex, national origin, disability, age, religion, or other non-merit factors. If you believe you have been discriminated against, contact the funding source's civil rights office and/or the Equal Employment Opportunity Officer, IDNR, One Natural Resources Way, Springfield, IL 62702-1271; 217/782-1274.

Information is available to the hearing impaired by calling the Illinois Department of Natural Resources Telecommunications Device for the Deaf (TDD) at 217/782-9175.

Printed by the Authority of the State of Illinois, 11/06, 3M
Printed on Recycled and Recyclable Paper Stock.

Rod Blagojevich, Governor