

Clark County, Illinois Trails & Greenways Vision Plan 2006

Walk, run, bike & canoe
in Clark County!



Promoting healthy
& livable communities...

Protecting the environment...

Stimulating economic development...

Creating community partnerships...

Preserving local culture & history...

Vision Plan Mission Statement

The Clark County trails and greenways network will be an integrated, diverse, and efficient system that provides multi-modal access to all Clark County residents and visitors, resulting in cross-jurisdictional coordination, additional economic development, tourism and recreation opportunities, improved environmental conditions, and sustainable communities.



Vision Plan Concepts

The *Clark County Trail & Greenways Vision Plan* is supported by multiple greenway corridors, of varying types, that create the backbone of the trail system. Greenway corridors and trail connections support multiple users and provide connectivity to destinations like community centers, parks and sites of historic significance.

Clark County's Greatest Opportunities



The National Road Heritage Trail is a greenway opportunity, recommended to include pedestrian and bicycle facilities. Generally following the alignment of the Historic National Road, connecting many communities and other trail opportunities in Clark County, this opportunity acts as the spine of the Clark County system.



The Mill Creek Greenway is recommended to include a variety of users, from pedestrian to bicycle to canoe/kayak and equestrian. The north section, connecting Mill Creek Park to National Road Heritage Trail to Lincoln Trail State Park is recommended to be a bicycle/pedestrian facility. South of Lincoln Trail State Park, is recommended to be a water trail with potential for equestrian, pedestrian and bicycle facilities.



The Wabash Heritage Greenway recommends the inclusion of a water facility, with potential to support pedestrian and bicycle facilities over time. The Wabash River currently supports a water trail almost continuously throughout its route through Indiana and along the Illinois/Indiana border as part of the Wabash River Heritage Corridor Commission with water trail access points up stream at Fairbanks Park in Terre Haute and down stream in Sullivan County.



Trail Connection Opportunities are critical to the trails and greenways network because they provide the connectivity between greenway opportunities. *Trail Connection Opportunities* may be part of the road, immediately adjacent to the road or separated from vehicular traffic. The right-of-way width, vehicular traffic and physical conditions will determine the facility type appropriate for the opportunity. Facilities potentially include a multi-use path, with separation from vehicular traffic, a signed bike route, or striped and signed bike lanes.



What's Next!?

To learn more about the vision plan, make a donation or get involved with Clark County Trails & Greenways, contact:

Clark County Trails Coalition
c/o University of Illinois Extension
15493 N State Hwy 1
Marshall, IL 62441
(217) 826-5422
www.extension.uiuc.edu/clark

Special Thanks!

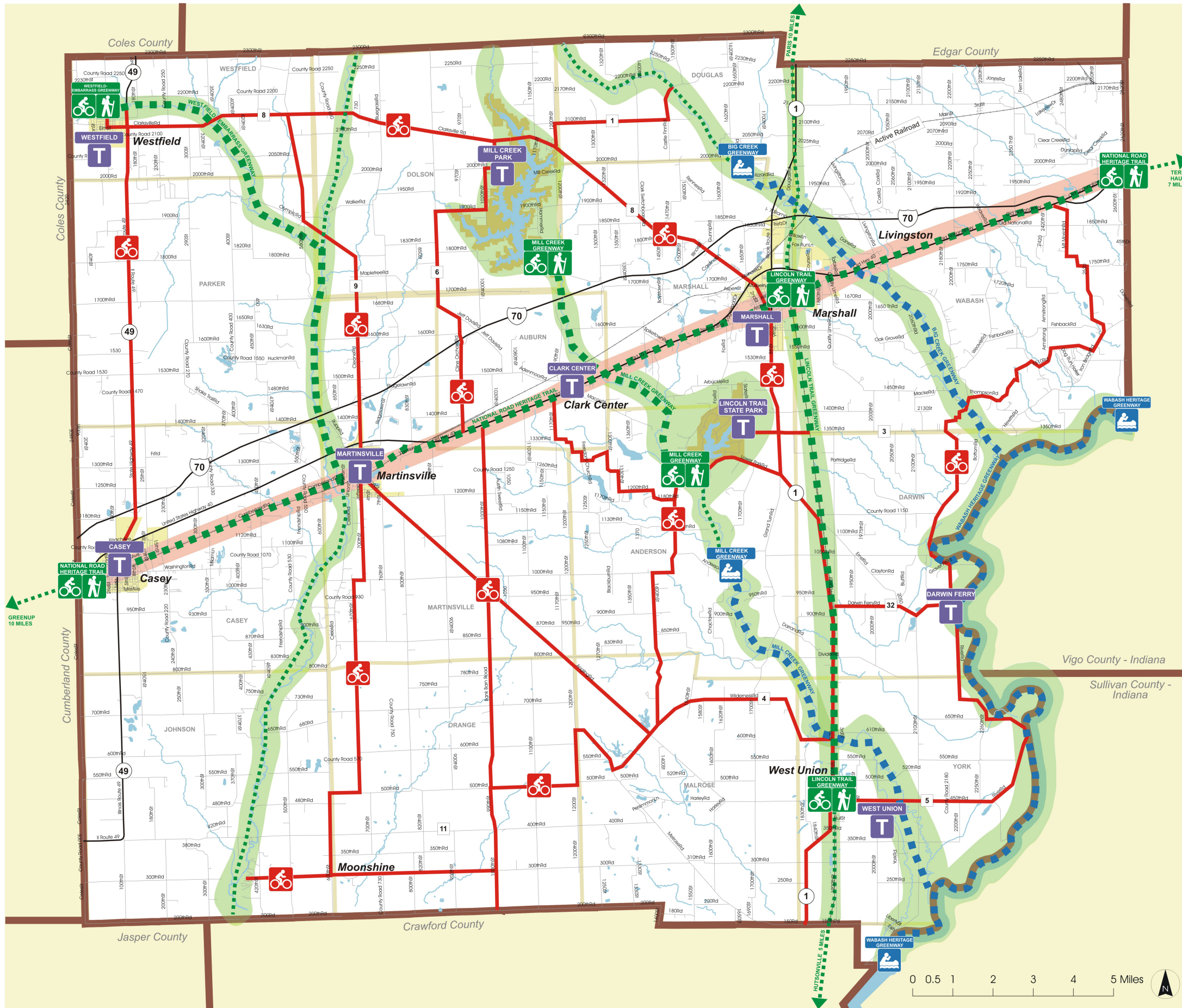
Special thanks to those who made this initiative possible.

Illinois Department of Natural Resources
County of Clark
Clark County Economic Development Committee
Clark County Enterprise Zone Board
City of Marshall
Marshall Main Street Program
Marshall Area Chamber of Commerce
Marshall Community Unit Schools
City of Martinsville
City of Casey
Casey-Westfield Community Unit Schools
Casey Industries, Inc.
Clark County Park District
Clark County Soil & Water Conservation District
Clark County Health Department
National Road Association of Illinois
Indiana National Road Association
National Road Heritage Trail, Inc.
University of Illinois Extension
Wabash Valley Resource Conservation & Development



**Clark County
Trails Coalition**  **storrow kinsella**

Clark County, Illinois Trails & Greenways Vision Plan 2006



NATIONAL ROAD HERITAGE TRAIL

Greenway Opportunity with bicycle and pedestrian facilities following the alignment of the Historic National Road.



LINCOLN TRAIL GREENWAY

Greenway Opportunity with bicycle and pedestrian facilities following the alignment of the former CSX Railroad.



WESTFIELD-EMBARRASS GREENWAY

Greenway Opportunity with bicycle and pedestrian facilities following the West Fork of the Embarrass to the Embarrass River.



MILL CREEK GREENWAY

Greenway Opportunity with bicycle and pedestrian facilities following Mill Creek.



Future extension of greenway opportunity



WABASH HERITAGE GREENWAY

Greenway Opportunity with a water trail facility along Wabash River, as part of the Wabash River Heritage Corridor. There is potential for future parallel bicycle/ pedestrian facilities to be located within the corridor.



MILL CREEK GREENWAY

Greenway Opportunity with a water trail facility along Mill Creek. There is potential for future parallel bicycle/ pedestrian facilities to be located within the corridor.



BIG CREEK GREENWAY

Greenway Opportunity with a water trail facility along Big Creek. There is potential for future parallel bicycle/ pedestrian facilities to be located within the corridor.

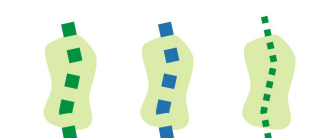


Trail Connection Opportunity/ Bikeway parallel to roadway, has potential to be bike lane or separated path, depending on specific conditions and use.

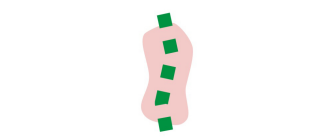


TRAILHEAD

Trailhead Opportunity. Amenities could potentially include wayfinding and interpretive signage, seating, bicycle and vehicle parking, information kiosk, shelter, restrooms and water.



Conservation Corridor Opportunity to protect natural & scenic amenities as potential recreation and environmental uses.



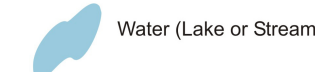
Historic National Road Corridor, location of National Road Heritage Trail and National Road Scenic Byway.



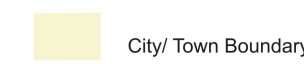
Major Park (Mill Creek & Lincoln Trail State Park)



County Boundary



Water (Lake or Stream)



City/ Town Boundary



Clark County
Trails Coalition

0 0.5 1 2 3 4 5 Miles

