

Effingham County Trails and Greenways

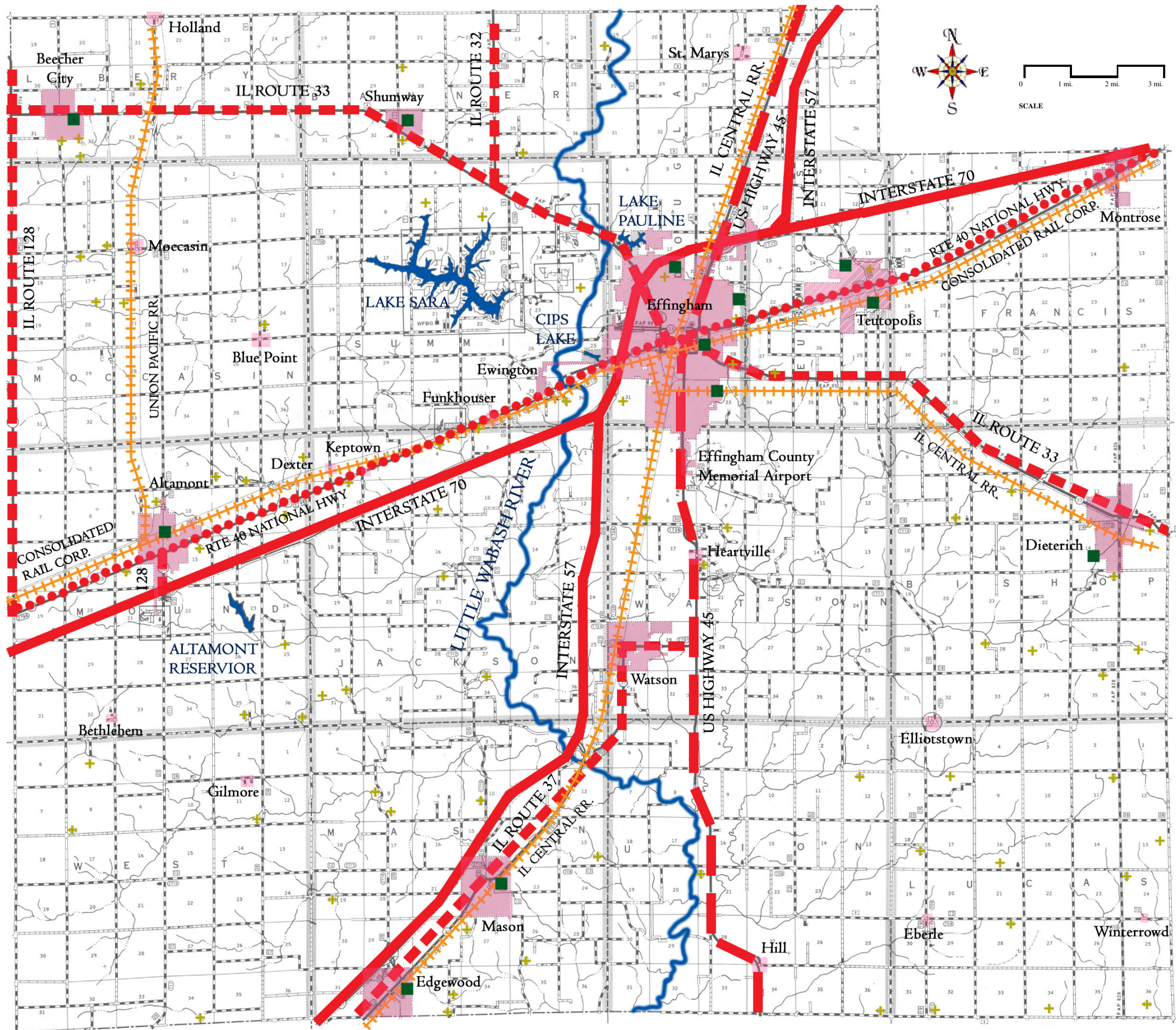
Natural Resources

September 2006

Legend

- MUNICIPALITIES
- PARK OR CONSERVATION AREA
- WOODED AREAS
- WATERSHED BOUNDARY
- LITTLE WABASH RIVER
- TRIBUTARIES

Massie Massie & Associates
 Land Planning and Landscape Architecture
 1210 South Fifth Street, Springfield, IL 62703
 217/544-3210, MassieAssociates@SBCglobal.net









Effingham County Trails and Greenways

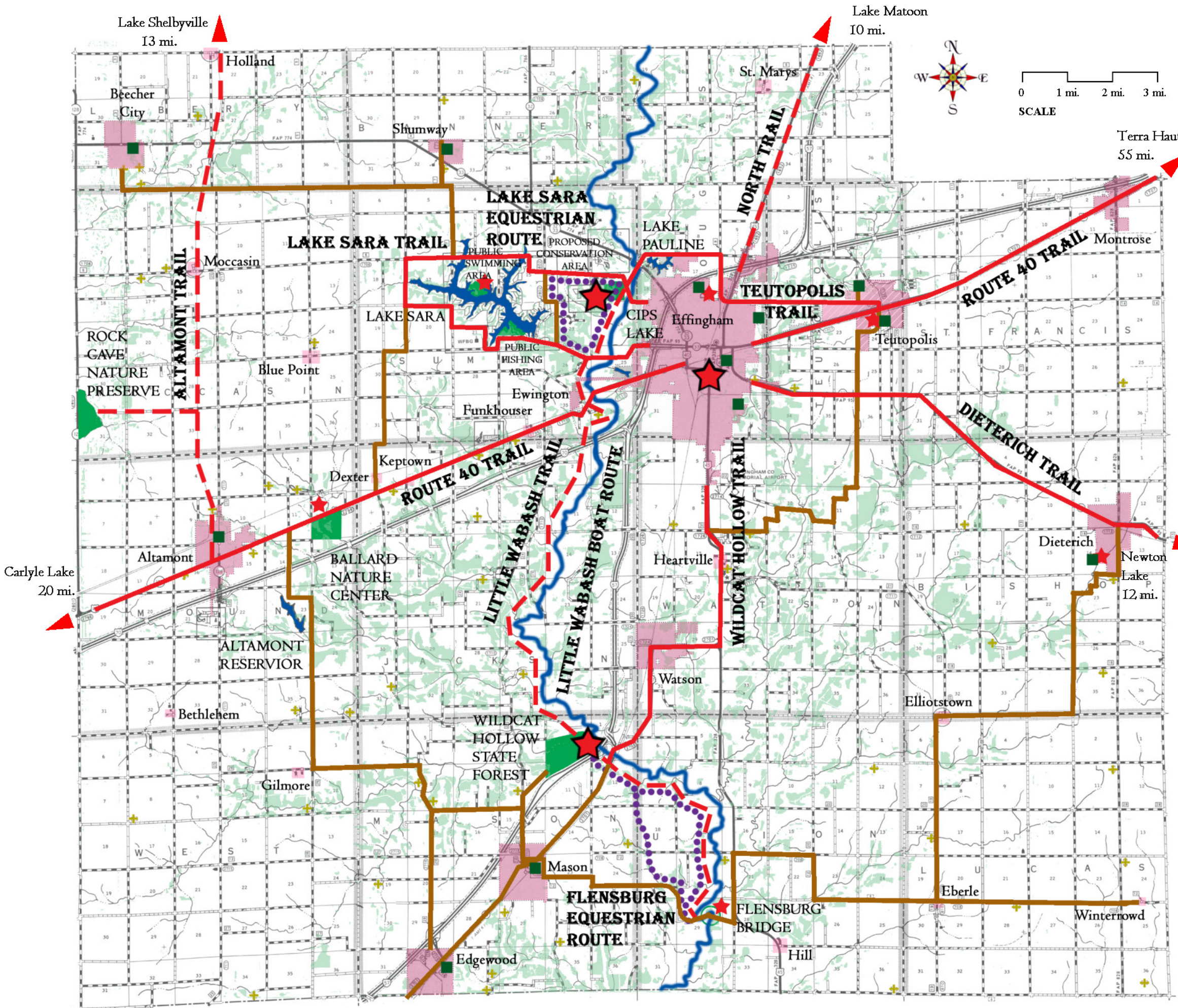
Cultural Resources

September 2006

Legend

-  INTERSTATE HIGHWAY
-  U.S. HIGHWAY
-  ILLINOIS STATE HIGHWAY
-  ROUTE 40 NATIONAL HISTORIC HIGHWAY
-  MUNICIPALITIES
-  RAILROAD
-  CEMETERY
-  COMMUNITY PARK

Massie Massie & Associates
 Land Planning and Landscape Architecture
 1210 South Fifth Street, Springfield, IL 62703
 217/544-3210, MassieAssociates@SBCglobal.net



Effingham County Trails and Greenways

Preliminary Trails Plan

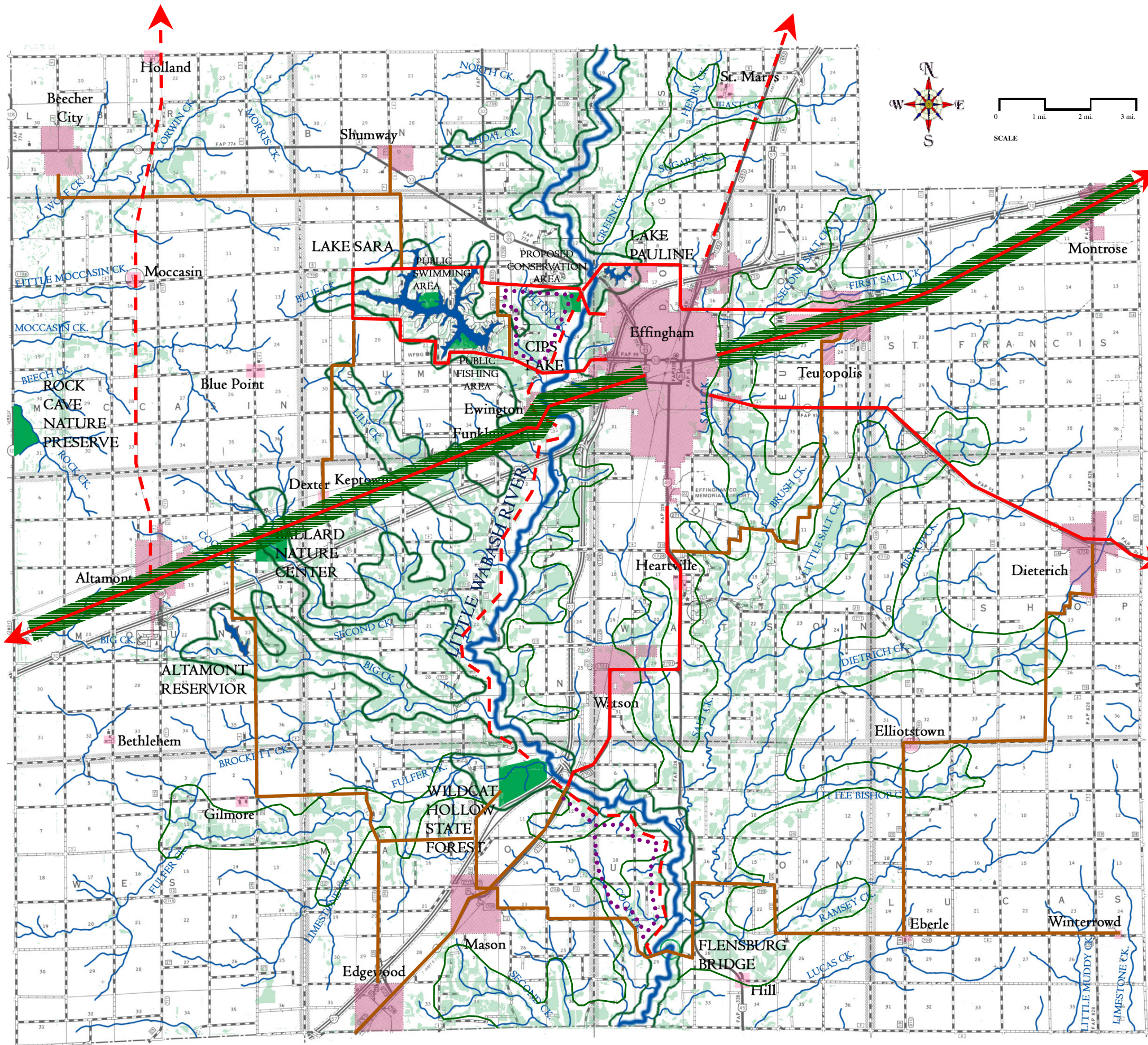
September 2006

Legend

- PRIMARY TRAIL
- - - POTENTIAL TRAIL
- SECONDARY TRAIL
- EQUESTRIAN TRAIL
- ★ TRAIL HEAD ★ TRAIL HUB
- PARK OR CONSERVATION AREA
- WOODED AREAS
- + CEMETERY
- COMMUNITY PARK

Massie Massie & Associates











Land Planning and Landscape Architecture
 1210 South Fifth Street, Springfield, IL 62703
 217/544-3210, MassieAssociates@SBCglobal.net



Effingham County Trails and Greenways

Greenways Plan

September 2006

- ### Legend
-  PRIMARY GREENWAY
 -  MUNICIPALITIES
 -  PARK OR CONSERVATION AREA
 -  WOODED AREAS
 -  LITTLE WABASH RIVER
 -  TRIBUTARIES
 -  PRIMARY TRAIL
 -  POTENTIAL TRAIL
 -  SECONDARY TRAIL
 -  EQUESTRIAN TRAIL

Massie Massie & Associates
 Land Planning and Landscape Architecture
 1210 South Fifth Street, Springfield, IL 62703
 217/544-3210, MassieAssociates@SBCglobal.net