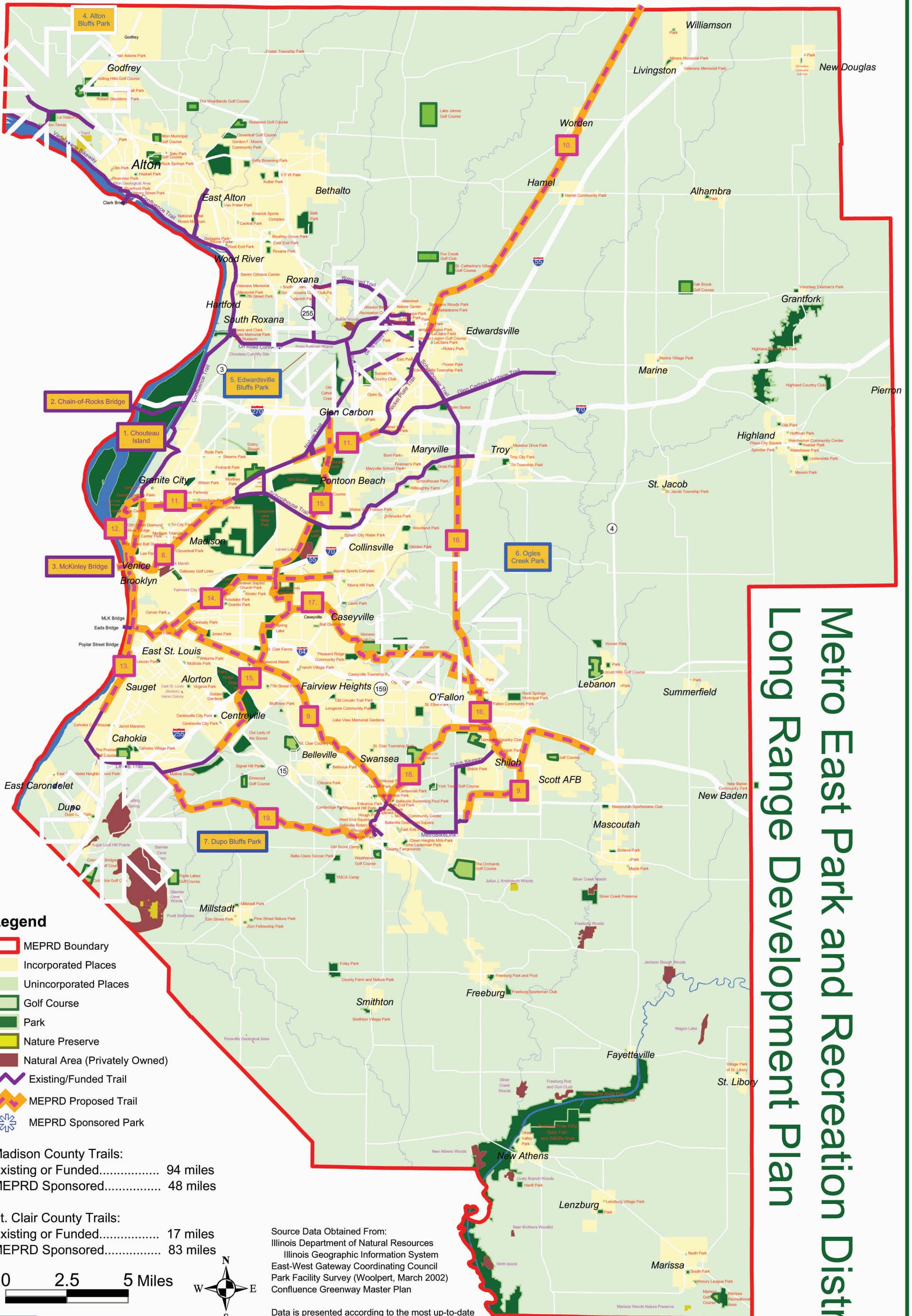


# MEPRD Parks and Trail System



Metro East Park and Recreation District  
 Long Range Development Plan

## Legend

- MEPRD Boundary
- Incorporated Places
- Unincorporated Places
- Golf Course
- Park
- Nature Preserve
- Natural Area (Privately Owned)
- Existing/Funded Trail
- MEPRD Proposed Trail
- ✦ MEPRD Sponsored Park

**Madison County Trails:**  
 Existing or Funded..... 94 miles  
 MEPRD Sponsored..... 48 miles

**St. Clair County Trails:**  
 Existing or Funded..... 17 miles  
 MEPRD Sponsored..... 83 miles

Source Data Obtained From:  
 Illinois Department of Natural Resources  
 Illinois Geographic Information System  
 East-West Gateway Coordinating Council  
 Park Facility Survey (Woolpert, March 2002)  
 Confluence Greenway Master Plan

Data is presented according to the most up-to-date  
 digital information available as of 2/19/2002

Map printed on 3/19/2003

**Woolpert, LLP**  
 4315 North Illinois Street, Suite 1C  
 Belleville, IL 62226-1045  
 Phone: 618.277.7004

